

Consultant:
 Daniel, Mann, Johnson & Mendenhall, Inc.
 778 Main Street, Suite 8
 Portland, Maine 04101
 Phone: (207) 775-1121
 Fax: (207) 819-0888

Consultant:
 ASSOCIATE ARCHITECT/STRUCTURAL ENGINEER
 SMRT
 141 Main Street, 2104
 Portland, Maine 04101
 Phone: (207) 772-3846
 Fax: (207) 772-1070

Consultant:
 MECHANICAL/ELECTRICAL ENGINEER
 Bird, Rogg + Aronson Consulting Engineers, LLC
 311 Arsenal Street
 Waterville, ME 02272-5789
 Phone: (207) 872-9339
 Fax: (207) 872-9339

Consultant:
 EQUIPMENT PLANNING
 EQPS
 1695 Burton & Associates
 Franklin, Tennessee 37067
 Phone: (615) 376-3114
 Fax: (615) 376-3114

Consultant:
 CONSTRUCTION MANAGER
 Johnson Construction
 7 Johnson Wharf
 Providence, Rhode Island 02903
 Phone: (401) 456-5516
 Fax: (401) 456-5516

Consultant:
 FOOD SERVICE
 FSC
 1808 West End Ave. Suite 1400
 Portland, ME 04101
 Phone: (615) 221-4591
 Fax: (615) 221-5889

Date:
 11/10/06 FINAL - ISSUE FOR BID
 Drawn By:
 MAF/JLL/CLB/CLJ
 Scale:
 AS NOTED

Francis
 Cauffman

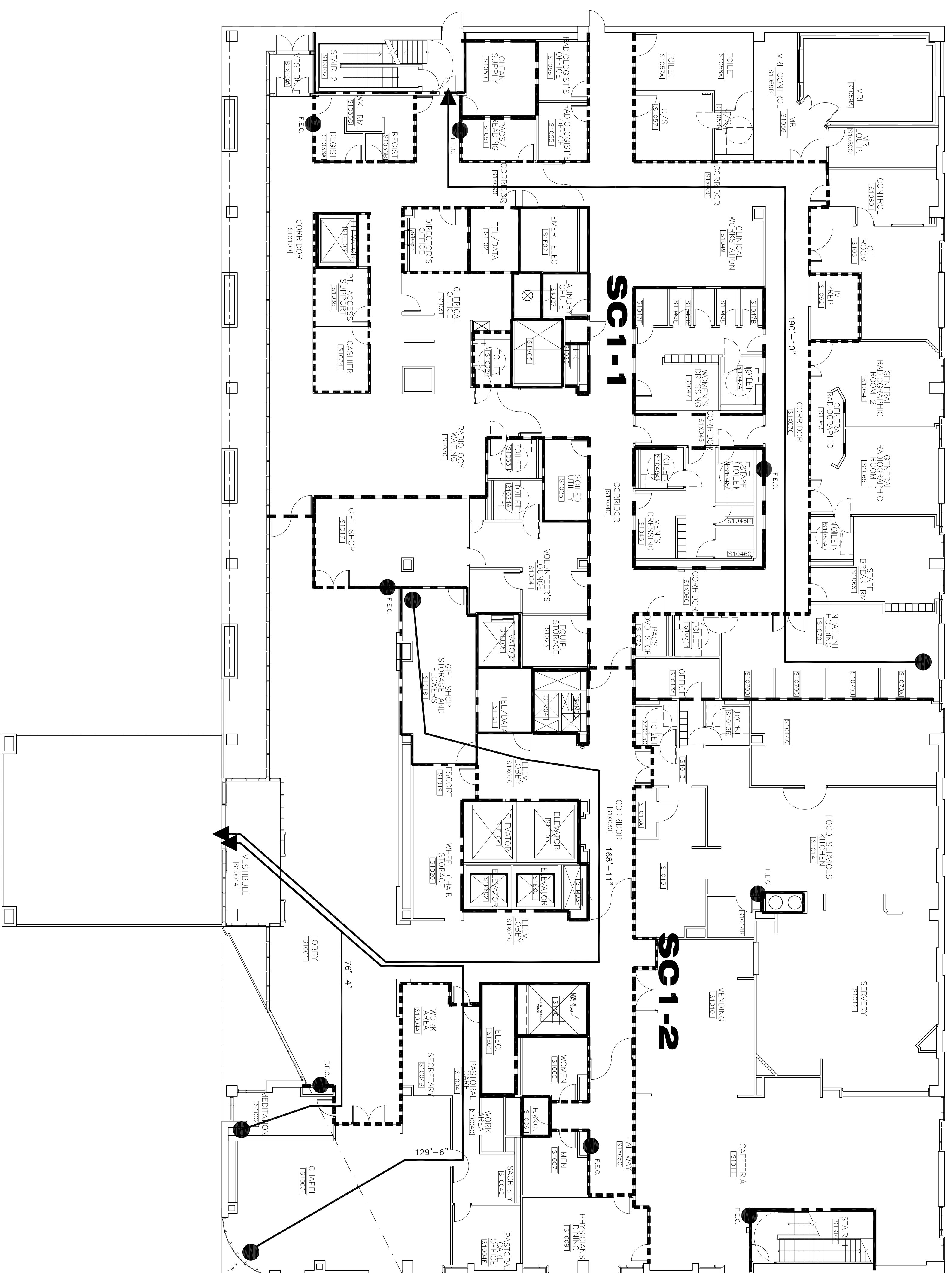
Foley
 Hoffmann

Project Title:
 Mercy Health Care
 System of Maine
 FORE RIVER SHORT
 STAY HOSPITAL



Project Number:
 F05-4898

Drawing Title and Number:
 FIRST FLOOR CODE EGRESS AND
 LIFE SAFETY PLAN
A0.01



1 FIRST FLOOR EGRESS PLAN
 A0.01 3/32" = 1'-0"

LEGEND	
	SMOKE COMPARTMENT DESIGNATION
	FLOOR COMPARTMENT DESIGNATION
SCF-1	SCF-1
	2 HR FIRE SEPARATION
	1 HR FIRE SEPARATION
	SMOKE BARRIER (COMPARTMENT)
	SMOKE PARTITION
	TRAVEL DISTANCE
	FIRE EXTINGUISHER CABINET
	FIRE EXTINGUISHER