

Consultant  
**CME ENGINEERS**  
 778 Main Street, Suite 808  
 South Portland, ME 04106  
 Phone: (207) 772-1010  
 Fax: (207) 879-0896

Consultant  
**ASSOCIATE ARCHITECT/STRUCTURAL ENGINEER**  
 144 Park Street P.O. Box 618  
 Portland, ME 04101  
 Phone: (207) 772-3846  
 Fax: (207) 772-1070

Consultant  
**MCGOWAN/ELECTRICAL ENGINEER**  
 Bart, 300 + Adams Consulting Engineers, LLC  
 The Arsenal on the Corners  
 Woburn, MA 02472-5793  
 Phone: (617) 924-8339  
 Fax: (617) 924-8339

Consultant  
**EQUIPMENT PLANNING**  
 Greg Burton & Associates  
 1000 West End Ave Suite 1400  
 Nashville, TN 37203  
 Phone: (615) 376-3100  
 Fax: (615) 376-3114

Consultant  
**CONSTRUCTION MANAGER**  
 Greene Building Company  
 7 Providence Road Island 02903  
 Providence, Rhode Island  
 Phone: (401) 485-5515  
 Fax: (401) 485-5515

Consultant  
**FOOD SERVICE**  
 Food Service 4ev, LLC  
 1808 West End Ave Suite 1400  
 Nashville, TN 37203  
 Phone: (615) 376-3100  
 Fax: (615) 376-3114

In the responsibility of the Construction Site-Contractors to verify all dimensions and grades before proceeding with any work.

Date: 11/10/06 FINAL - ISSUE FOR BID  
 Drawn by: MAF/JUL/CLB/CLJ  
 Scale:  
 AS NOTED

Francis

Cauffman

Foley

Hoffmann

Francis Cauffman 2120 Acad Street  
 Portland, ME 04106  
 Architects L.L.C. 215-566-6250

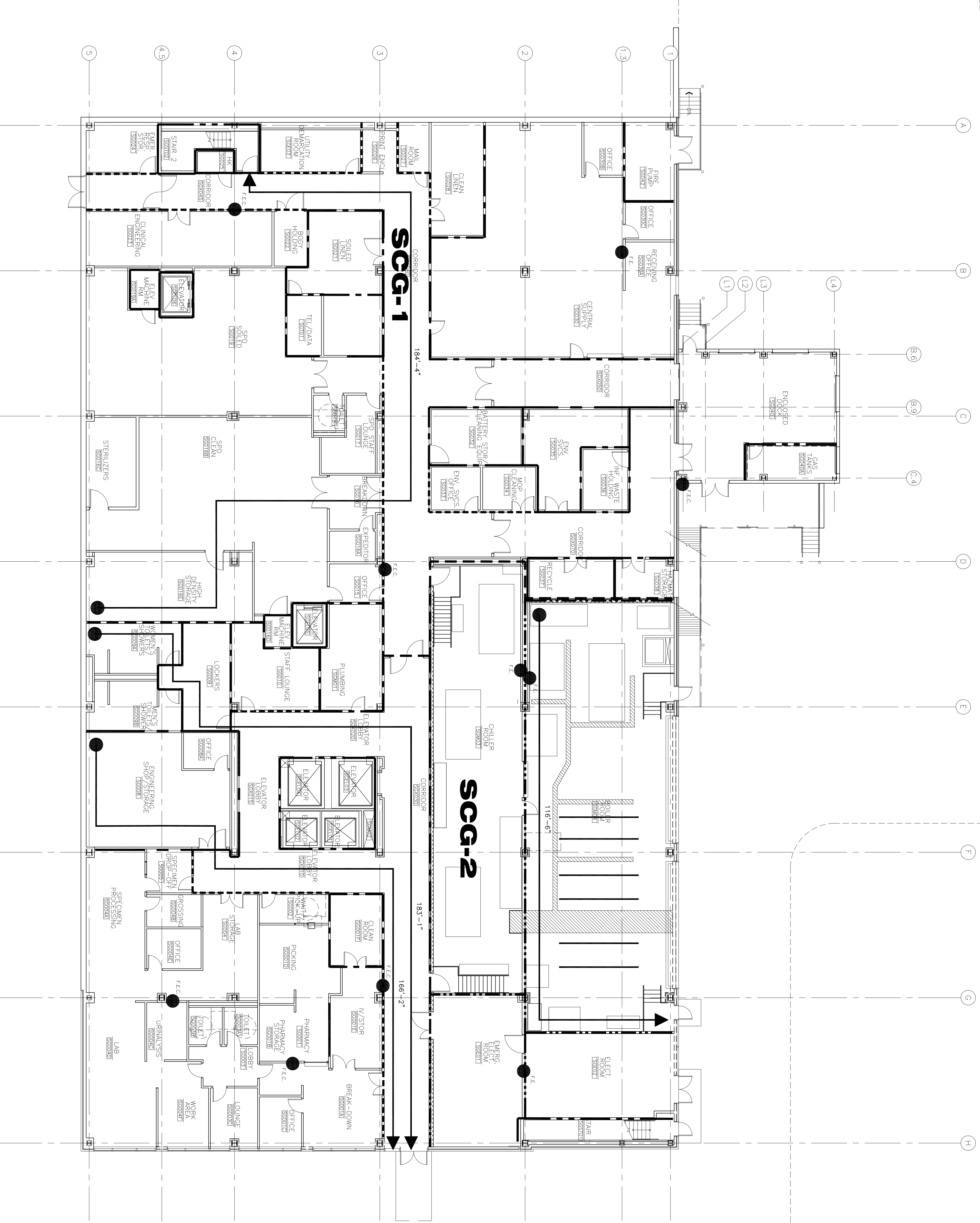
Project Title  
 Mercy Health Care  
 System of Maine  
 FORE RIVER SHORT  
 STAY HOSPITAL



Project Number  
 PD-4998

Drawing Title and Number  
 GROUND FLOOR CODE  
 EGRESS AND LIFE SAFETY

**A0.00**



1  
 GROUND FLOOR EGRESS PLAN  
 3/32" = 1'-0"

LEGEND	
SMOKE COMPARTMENT	FLOOR DESIGNATION
<b>SCF-1</b>	COMPARTMENT DESIGNATION
2 HR FIRE SEPARATION	1 HR. FIRE SEPARATION
SMOKE BARRIER (COMPARTMENT)	SMOKE PARTITION
TRAVEL DISTANCE	FIRE EXTINGUISHER CABINET
0'-0"	FIRE EXTINGUISHER