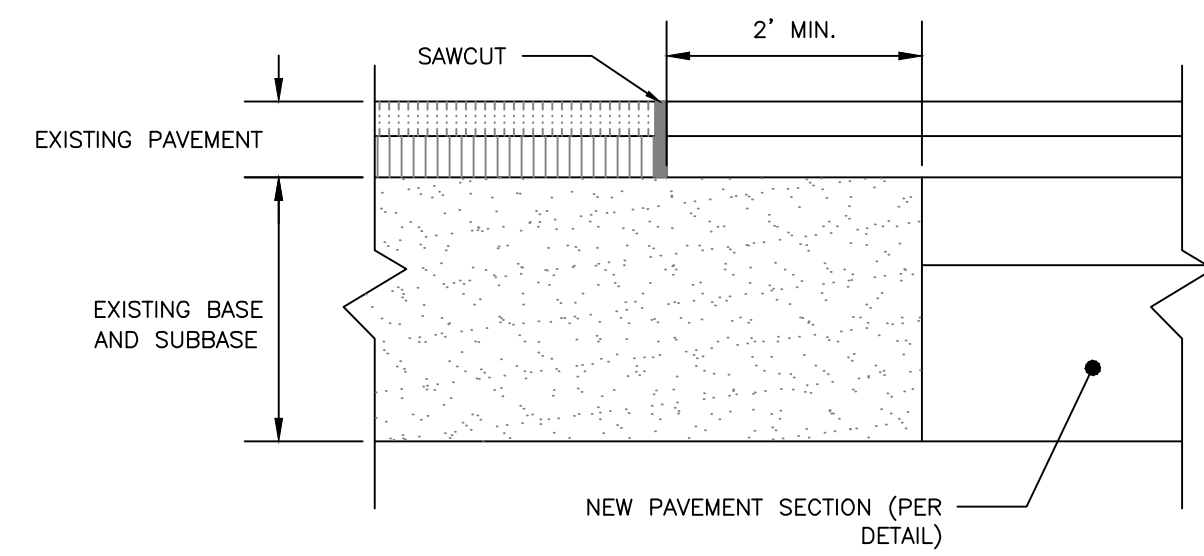
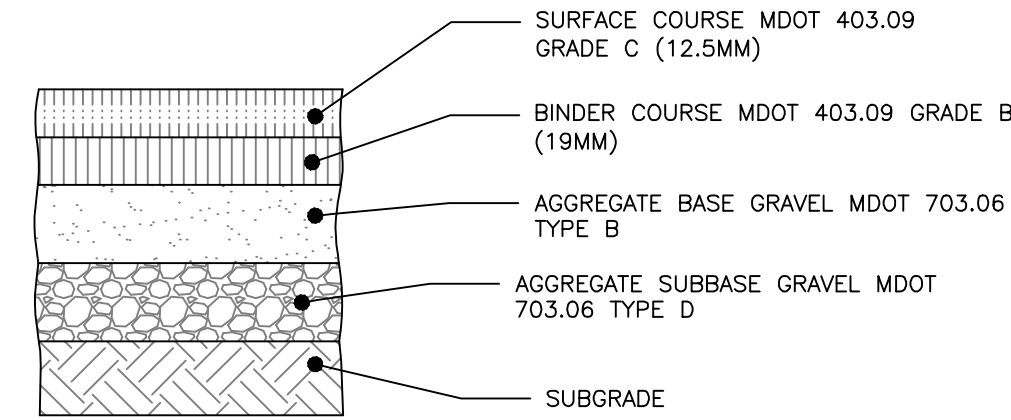


ISSUED FOR	BY
LEVEL II SITE PLAN	WHS
DATE	12/18/18
LEVEL II SITE PLAN	WHS
DATE	12/21/18

- NOTES:
1. SAWCUT EXISTING PAVEMENT AND REMOVE 2' STRIP OF EXISTING PAVEMENT. APPLY BITUMINOUS TACK COAT PRIOR TO PLACEMENT OF NEW BITUMINOUS PAVEMENT.
  2. THE NEW PAVEMENT SECTION SHALL MEET THE CITY OF PORTLAND ARTERIAL BITUMINOUS PAVEMENT SECTION DETAIL AT A MINIMUM OR THE EXISTING PAVEMENT AND AGGREGATE BASE AND SUBBASE DEPTH WHICHEVER IS GREATER.



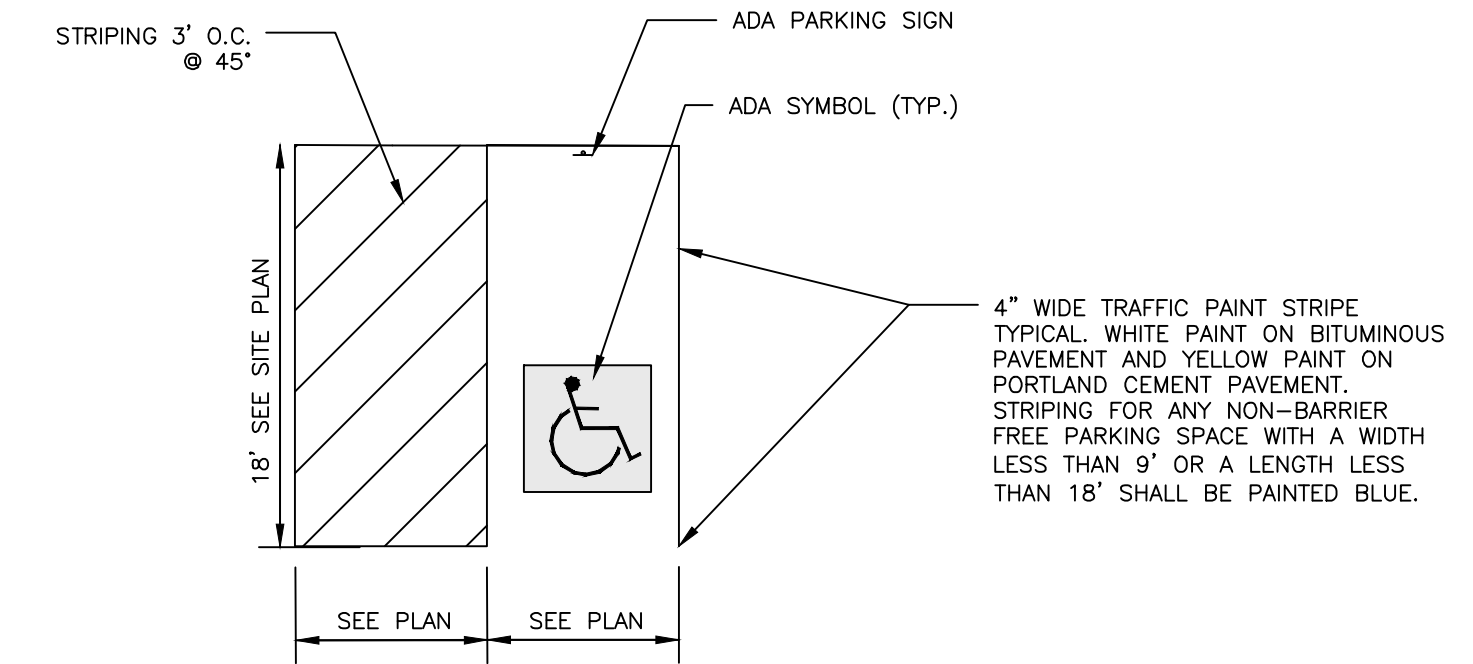
**PAVEMENT SAWCUT DETAIL**  
NOT TO SCALE



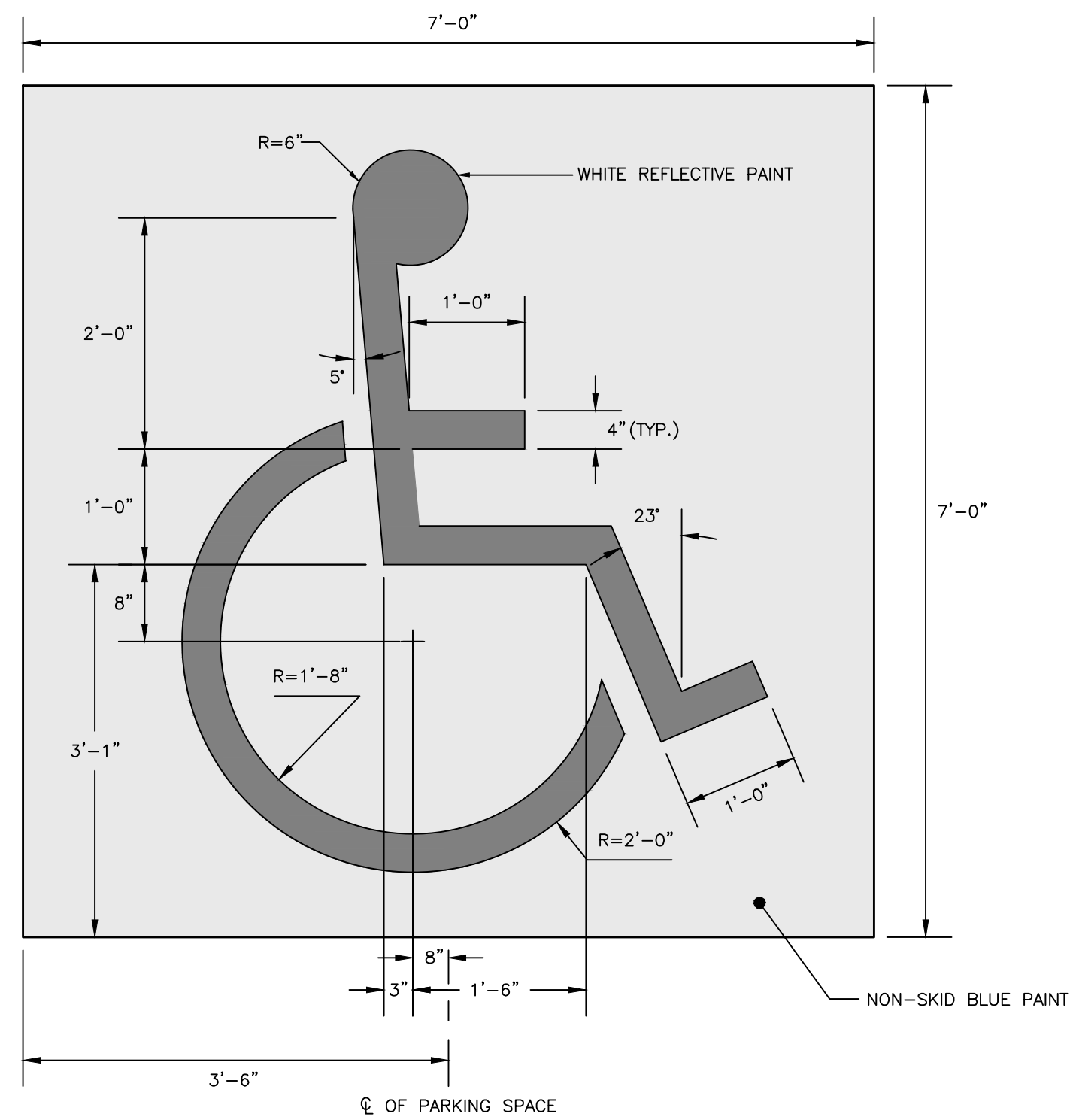
- NOTE:
- COMPACT SUBGRADE TO 95% MAXIMUM DRY DENSITY IN ACCORDANCE WITH ASTM D-1557

THICKNESS OF LAYERS	
STANDARD	LAYERS
1-1/2"	SURFACE COURSE MDOT 403.09 GRADE C (12.5mm)
2"	BINDER COURSE MDOT 403.09 GRADE B (19mm)
3"	AGGREGATE BASE GRAVEL MDOT 703.06 TYPE B
15"	AGGREGATE SUBBASE GRAVEL MDOT 703.06 TYPE D

**BITUMINOUS PAVEMENT PROFILE:**  
**CASSIDY POINT DRIVE & INTERNAL PARKING LOT**  
NOT TO SCALE



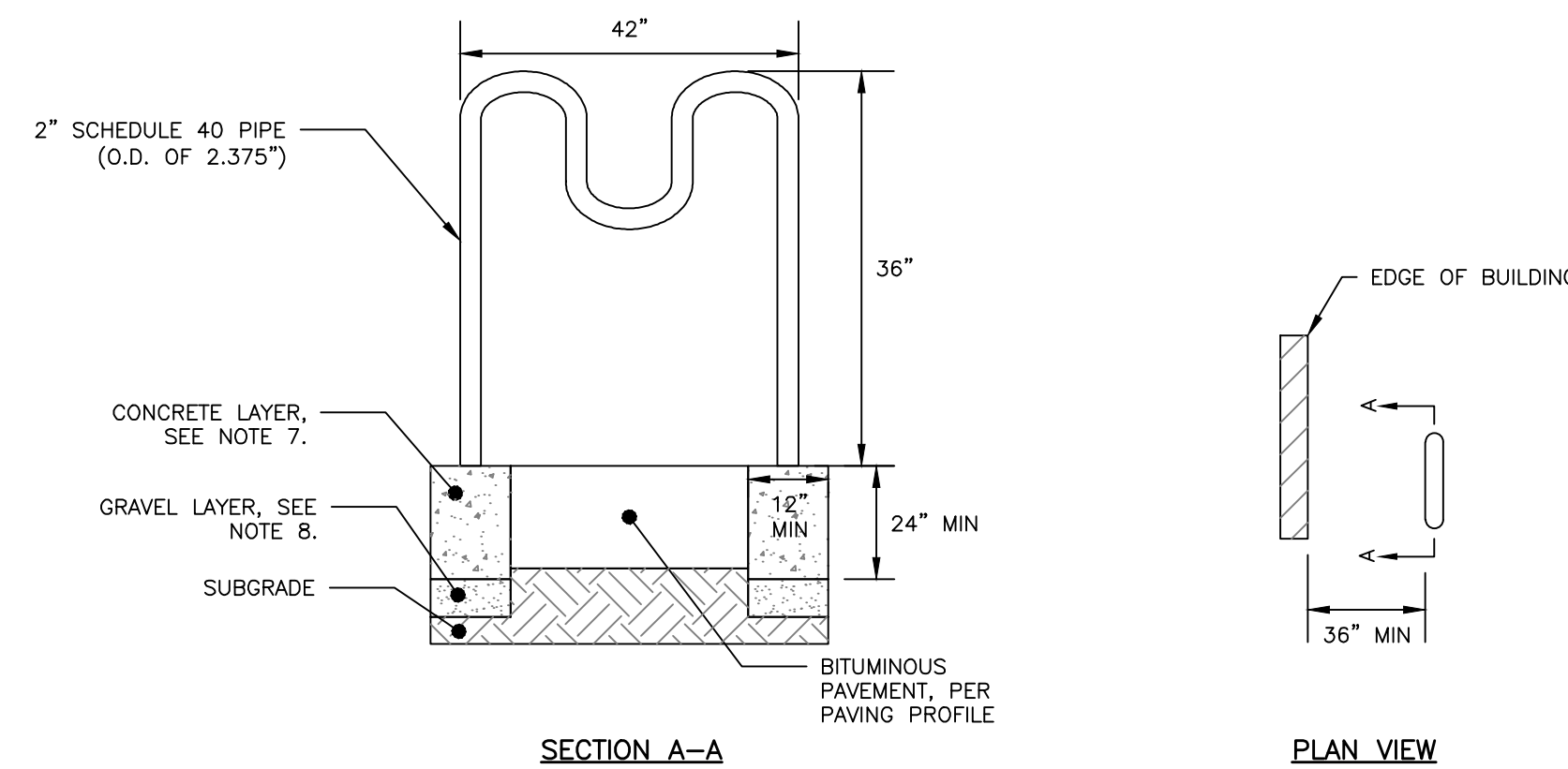
**PARKING SPACE DIMENSIONS**  
NOT TO SCALE



**INTERNATIONAL BARRIER FREE SYMBOL**  
NOT TO SCALE

NOTES:

1. BICYCLE RACK SHALL HAVE CAPACITY FOR FOUR BICYCLES.
2. BICYCLE RACK PARTS SHALL BE OF UNIFORM COLOR AND SHALL BE FINISHED IN ACCORDANCE WITH PRODUCT SPECIFICATION. PER CITY OF PORTLAND TECHNICAL STANDARDS ALL BICYCLE RACKS WITHIN THE RIGHT-OF-WAY SHALL MATCH THE FURNITURE COLOR FOR THAT LOCATION AS DESCRIBED IN THE MUNICIPAL LIGHTING STANDARDS; IF NO DESIGNATED COLOR FOR THAT AREA EXISTS, BICYCLE RACKS SHALL BE BLACK.
3. BICYCLE RACK SHALL BE INSTALLED IN ACCORDANCE WITH MANUFACTURER'S MOST RECENT INSTALLATION RECOMMENDATIONS, AND SHALL BE INSTALLED WITH AN IN-GROUND MOUNT UNLESS OTHERWISE APPROVED BY ENGINEER.
4. BICYCLE RACK SHALL BE "DERO HI ROLLER", AS MANUFACTURED BY DERO BIKE RACKS.
5. MINIMUM OFFSETS SHOWN, MANUFACTURER'S RECOMMENDED OFFSETS SHALL BE ENFORCED WHERE POSSIBLE.
6. ALL OFFSETS ARE FROM OUTSIDE EDGES OF ITEMS.
7. CONCRETE SHALL BE 4000 PSI @28 DAYS, BOTTOM OF CONCRETE SHALL BE AT TOP OF GRAVEL ELEVATION.
8. GRAVEL LAYER SHALL BE INSTALLED IN ACCORDANCE WITH BITUMINOUS BASE DETAIL, AND SHALL BE MAINTAINED TO 703.06 TYPE B.



**BICYCLE RACK DETAIL**  
NOT TO SCALE

DRAWING NAME: **SITE DETAILS**  
PROJECT NAME: **CASSIDY POINT REDEVELOPMENT**  
CLIENT: **PROJECT MANAGEMENT, INC.**  
225 COMMERCIAL STREET, SUITE 502 PORTLAND, ME 04101

**A C O R N ENGINEERING, INC.**  
65 HANOVER ST. PORTLAND MAINE 04101  
(207) 775-2855  
THIS PLAN SHALL NOT BE USED WITHOUT WRITTEN PERMISSION FROM ACOEN ENGINEERING, INC. ANY ALTERATIONS, AUTHORIZED OR UNAUTHORIZED, SHALL BE AT THE USER'S SOLE RISK AND WITHOUT LIABILITY TO ACOEN ENGINEERING, INC.

FILE:	1113_DETAILS
JN:	1113
SCALE:	NTS
DESIGNED BY:	FRT
DRAWN BY:	FRT
CHECKED BY:	WHS



PERMIT LEVEL  
NOT ISSUED FOR  
CONSTRUCTION

DRAWING NO.  
**C-40**