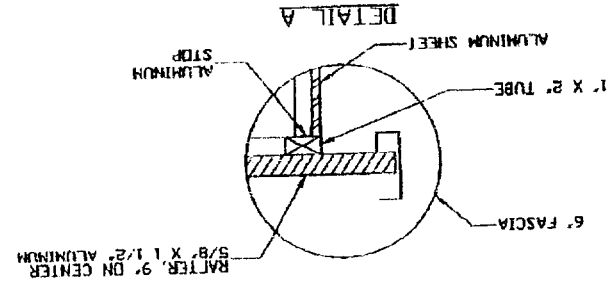
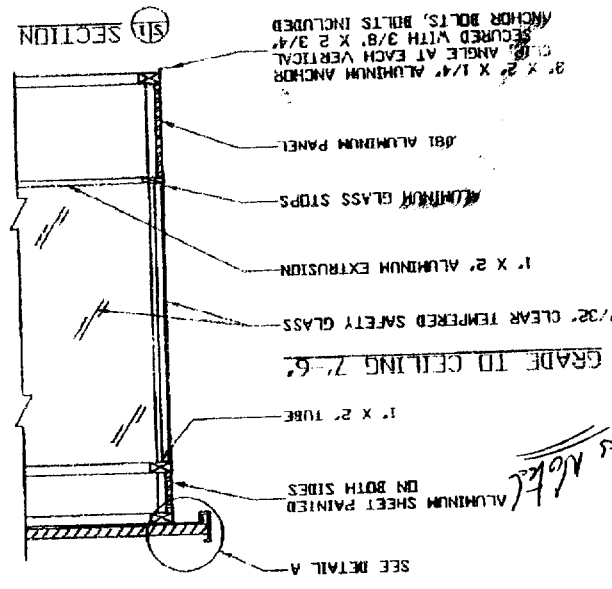
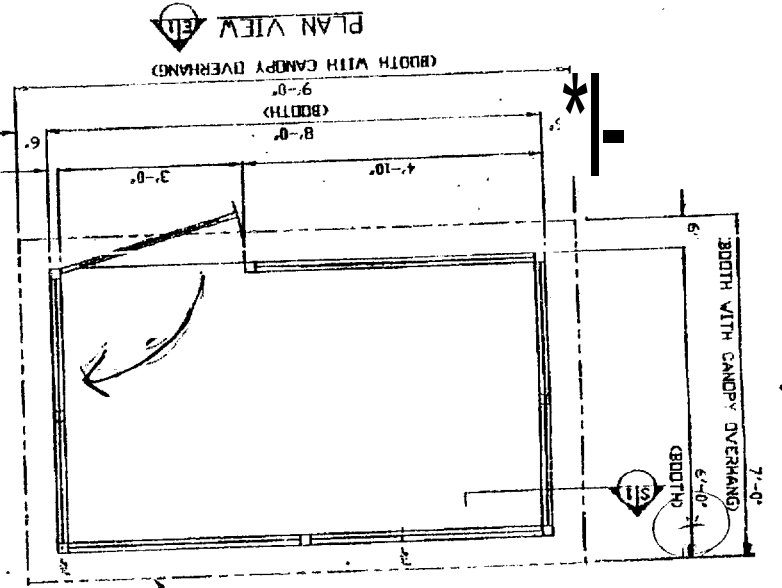


DATE: 8-23-04	SCALE: NTS	REVISIONS: 1	SALES REPRESENTATIVE: CHIC O BM
SIZE: 6' X 8'	DRAWN BY: JHS	REVISED:	
Merrill's Marine Terminal Portland, ME			
DWG# X04-043 SHEET A-1			
PAR-KUT INTERNATIONAL, INC. 40801 Production Drive Portland, ME 04106 PH: (588) 488-2017			
NOTE: THIS PRINT AND DESIGN ARE THE PROPERTY OF PAR-KUT INTERNATIONAL, INC. IT MUST NOT BE REPRODUCED IN ANY MANNER, NOR SHALL IT BE SUBMITTED TO OUTSIDE PARTIES FOR EVALUATION WITHOUT OUR CONSENT. IT SHALL BE USED ONLY AS A MEANS OF REFERENCE TO WORK DESIGNED AND FURNISHED BY PAR-KUT. PAR-KUT RESERVES THE RIGHT TO MAKE CHANGES TO DESIGN FOR ENGINEERING PURPOSES WITHOUT NOTICE. REVISIONS MAY NOT BE MADE.			

A/E NOTES
 PAINT COLOR: DC7522 Signal Red
 (PLEASE SPECIFY COLOR)
 SCALE BAR
 NOTE: ELEVATIONS 24
 0 6 12 24 36
 0 3 9 18 30 36

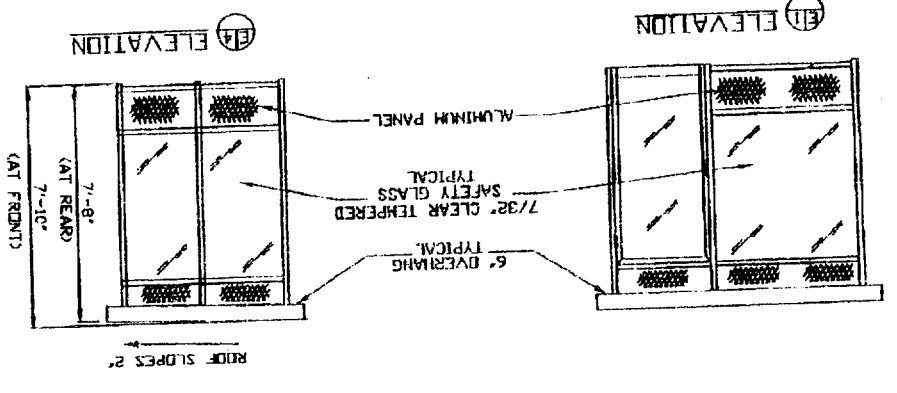
NOTE: THIS SHELTER IS ERRECTED ON SITE BY CUSTOMER



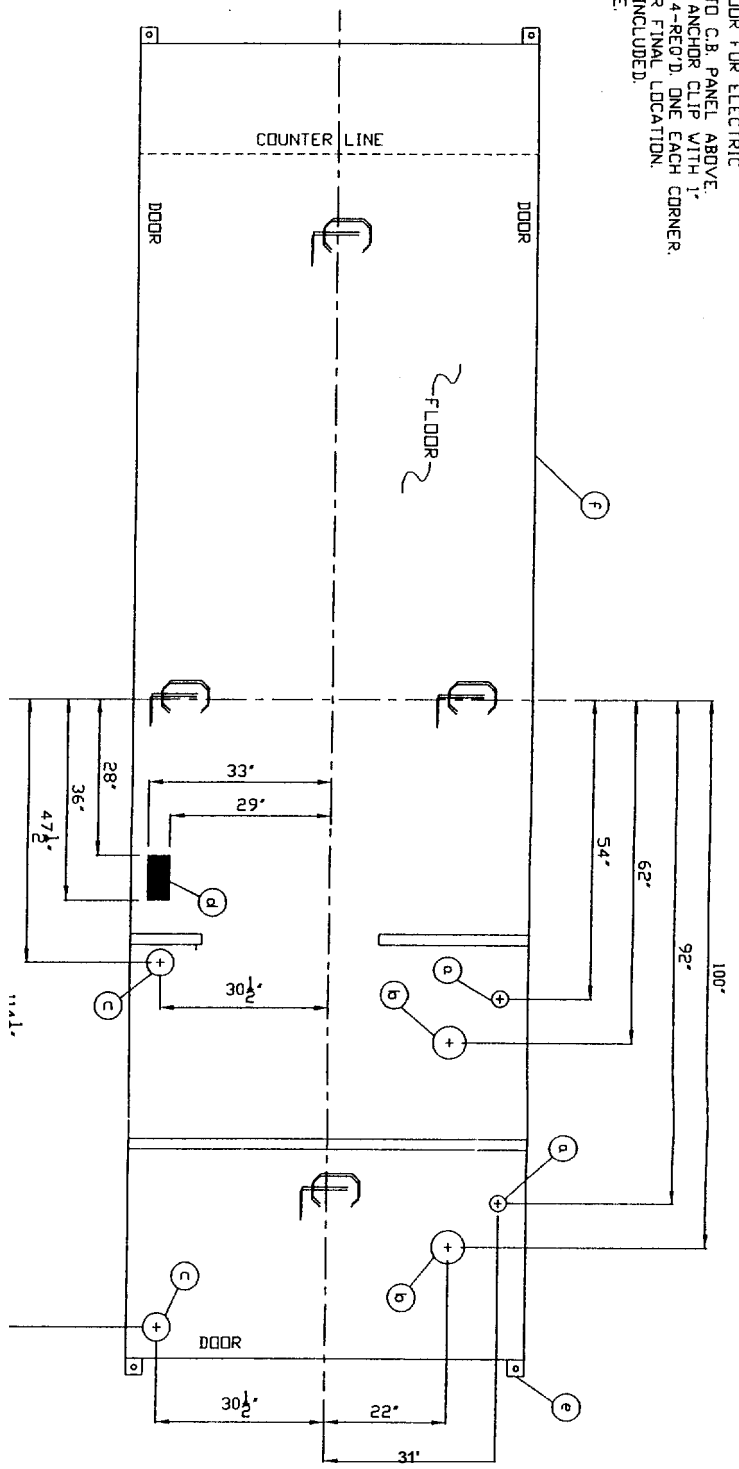
APPROVED FOR FABRICATION
 BY: MERRILL
 DATE: 2/26/04

Over Swing in
 26" door
 of outside

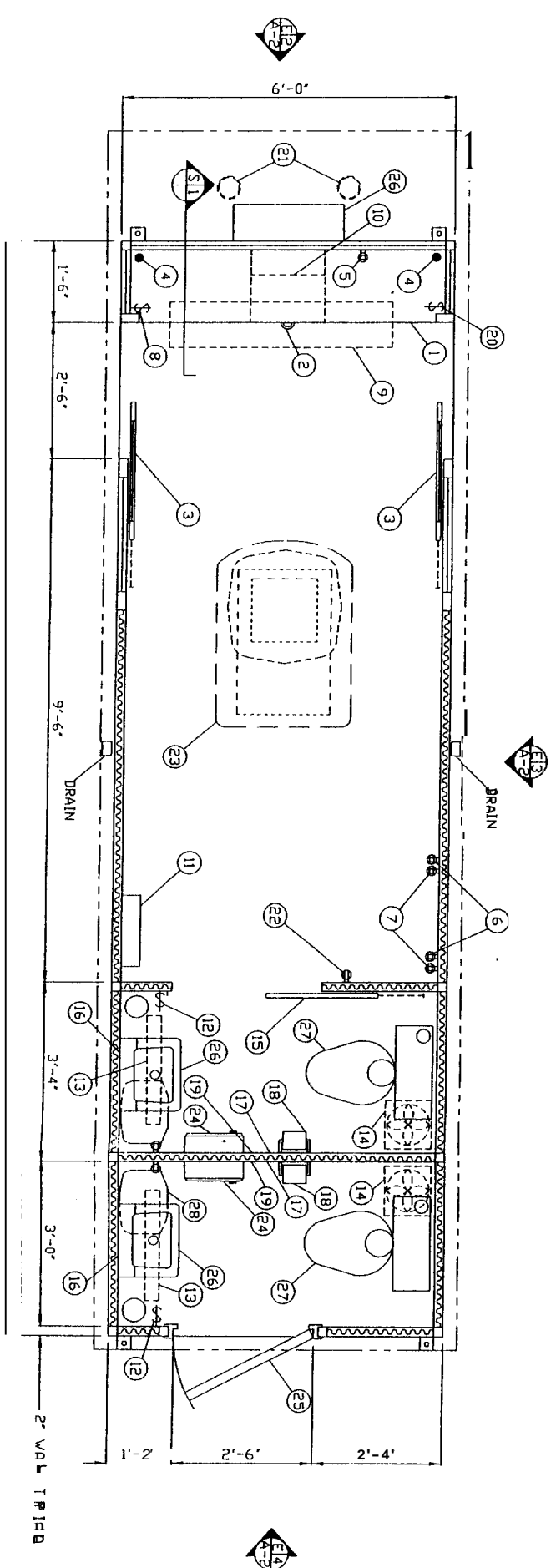
- NOTE:
1. ROOF TO BE FIBERGLASS
 2. KICK PANELS PAINTED COLOR OF CHOICE
 3. STRUCTURAL FRIGITS AND CROSS MEMBERS TO BE CLEAR ANODIZED ALUMINUM
 4. 36" SWINGING ALUMINUM DOOR



- FLOOR HOLE SCHEDULE**
- a. 3" DIA. HOLE IN FLOOR FOR WATER INLET, 2 REQ'D.
 - b. 6" DIA. HOLE IN FLOOR FOR WATER CLOSET, 2 REQ'D.
 - c. VENT STACK, 6" DIA. HOLE IN FLOOR, 2 REQ'D.
5" DIA. SLEEVE THROUGH ROOF, 2 REQ'D.
 - d. 4" X 8" SLOT IN FLOOR FOR ELECTRIC SERVICE ENTRANCE TO C.B. PANEL ABOVE. 3" X 3" X 1/4" MIN. ANCHOR CLIP WITH 1" ANCHOR BOLT. HOLE 4-REQ'D. ONE EACH CORNER. ANCHOR BOLTS NOT INCLUDED.
 - e. 5" DIA. SLEEVE THROUGH ROOF, 2 REQ'D.
 - f. OUTER EDGE OF BASE.

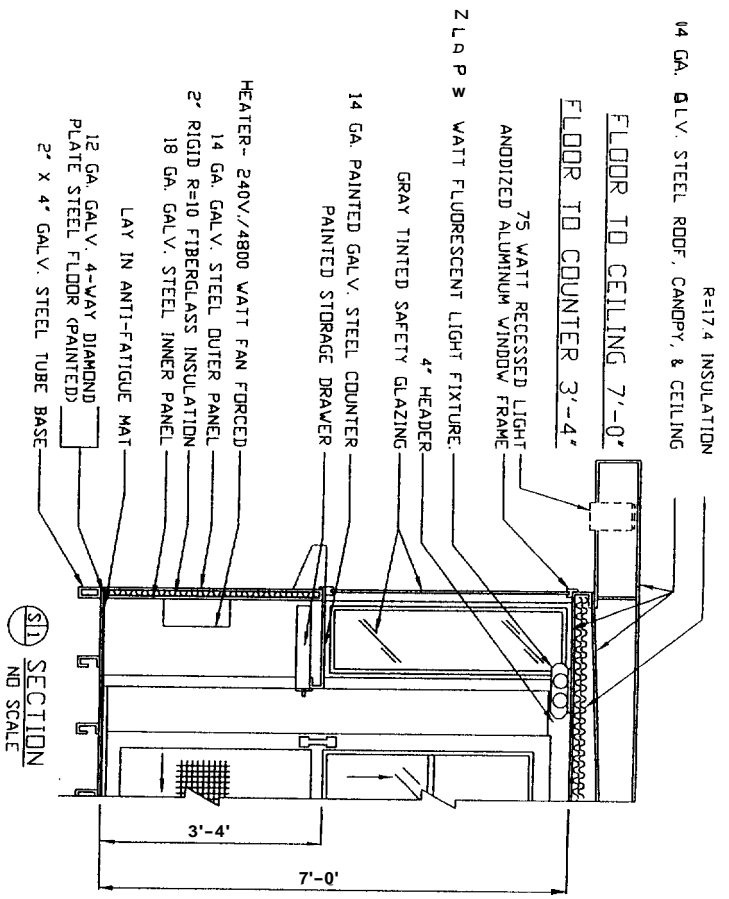


NOTE: PROVIDE 120/240V, 1Ø-3 WIRE SERVICE WITH GROUND. SERVICE ENTRANCE/ANCHOR BOLT LAYOUT

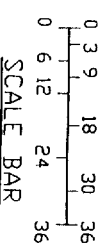


PLAN VIEW

REFER TO SHEET A-3 FOR ITEM DESCRIPTIONS AND INFORMATION.



APPROVED FOR FABRICATION
 BY: _____
 PRINT LAST NAME: _____
 DATE: _____



NOTE: THIS PRINT AND DESIGN ARE THE PROPERTY OF PAR-KUT INTERNATIONAL, INC. IT MUST NOT BE REPRODUCED, COPIED, EITHER WHOLLY OR IN PART, OR TRANSMITTED IN ANY FORM OR BY ANY MEANS, WITHOUT THE WRITTEN CONSENT OF PAR-KUT INTERNATIONAL, INC. PAR-KUT INTERNATIONAL, INC. 40961 Production Drive Harrison Twp, Mich. 48045-1591 Ph (586) 468-2947

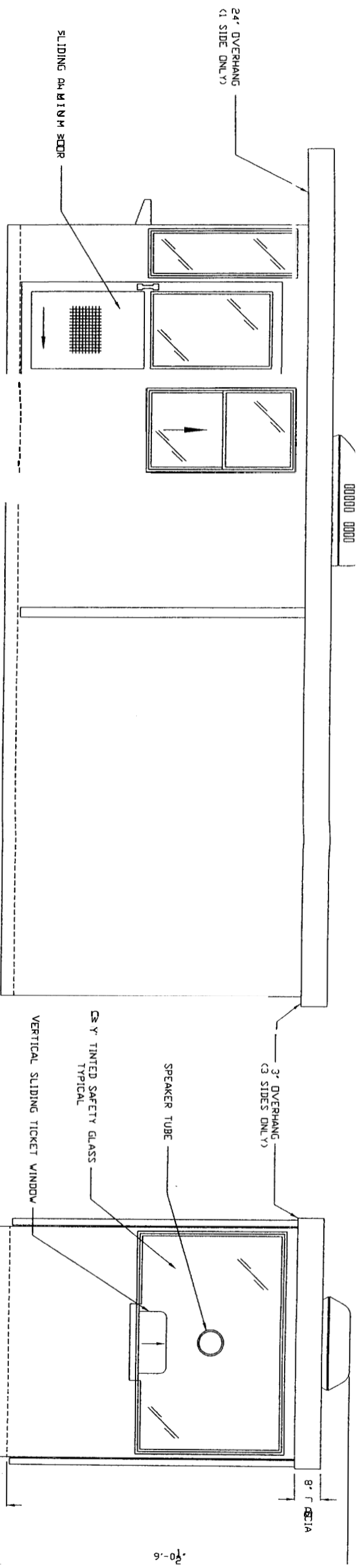
PAR-KUT INTERNATIONAL, INC.
 40961 Production Drive
 Harrison Twp, Mich.
 48045-1591
 Ph (586) 468-2947

MERRILL'S MARINE TERMINAL
 PORTLAND, ME

DWG# 04-097 SHEET A-1

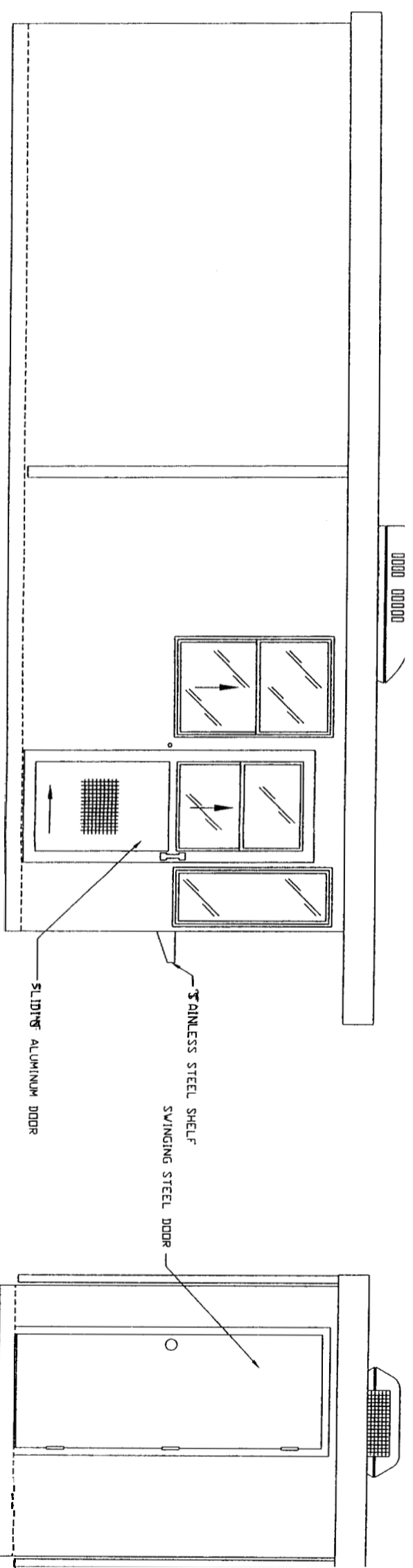
DATE	3-9-2004	SIZE	6" X 20"	QTY	1
CHK'D BY	JIM SMITH	SALES REPRESENTATIVE			

GENERAL NOTES
 PAINT COLOR: FOREST GREEN
 TINTED GLAZING COLOR: GRAY
 LAY IN ANTI-FATIGUE MAT IN OFFICE AREA ONLY



E11
A-1
ELEVATION

E2
A-1
ELEVATION



E3
A-1
ELEVATION

E4
A-1
ELEVATION

APPROVED FOR FABRICATION

SY: _____

DATE: _____

BY: _____

— 3/8" AIN

0	24	36
0	1	36
B		

NOTE: THIS PRINT AND DESIGN ARE THE PROPERTY OF PAR-KUT INTERNATIONAL, INC. IT IS NOT TO BE REPRODUCED IN ANY MANNER, NOR SHALL IT BE SUBMITTED TO OUTSIDE PARTIES FOR EXAMINATION, WITHOUT OUR CONSENT. IT SHALL BE USED ONLY AS A MEANS OF REFERENCE TO THE ORIGINAL DESIGN. PAR-KUT RESERVES THE RIGHT TO MAKE CHANGES TO DESIGN FOR ENGINEERING PURPOSES WITHOUT NOTICE. REVISIONS MAY NOT BE NOTED.

PAR-KUT INTERNATIONAL, INC.
40961 Production Drive
Harrison Twp, Mich.
48045-1251
PH: (986) 466-2941



DWG# 04-097 SHEET A-2

MERRILL'S MARINE TERMINAL
PORTLAND, ME

FOR VERBAL SCALE: DRAWN BY: REVISED

3-9-2004 6' X 20' SALES REPRESENTATIVE

1. PAINTED STORAGE DRAWER BENEATH COUNTER.
2. DDDR- 30" WIDE, SLIDING ALUMINUM WITH WEATHER-STRIPPING, BALL BEARING HANGERS, GRAY SAFETY GLAZING, HEAVY DUTY TRACK, LOCK, & HARDWARE, 2 REQ'D
3. HOLE IN COUNTER FOR DRDP CORDS, 2-REQ'D.
4. QUAD OUTLET MOUNTED BELOW COUNTER
5. QUAD OUTLET 18" AFF ON SINGLE CIRCUIT, 2 REQ'D.
6. QUAD OUTLET 34" AFF ON SINGLE CIRCUIT, 2 REQ'D.
7. LIGHT SWITCH FOR INTERIOR OFFICE LIGHT.
8. LIGHT- 2-34 WATT LAMP FLUORESCENT LIGHT FIXTURE WITH LENS.
9. HEATER UNIT 240V./4800W WALL MOUNTED WITH INTEGRAL THERMOSTAT CONTROL.
10. C.B. PANEL- 12 SPACE 120/240V. 1Ø-3 WIRE WITH GROUND BAR. 100 AMP MAIN BREAKER IS INCLUDED.
11. SWITCH MOUNTED IN REST ROOM ARE FOR LIGHT AND EXHAUST FAN, 2 REQ'D.
12. LIGHT- 20 WATT LAMP FLUORESCENT LIGHT FIXTURE, 2 REQ'D.
13. EXHAUST FAN MOUNTED IN REST ROOM CEILING, 2 REQ'D.
14. PRIVACY DDDR - SLIDING STEEL WITH LOCK.
15. MIRROR MOUNTED ABOVE LAVATORY, 2 REQ'D.
16. COAT HOOK MOUNTED ON WALL, 2 REQ'D.
17. TOILET PAPER HOLDER, 2 REQ'D.
18. PAPER TOWEL DISPENSER, 2 REQ'D.
19. LIGHT SWITCH FOR EXTERIOR SOFFIT LIGHTS.
20. 75 WATT INCANDESCENT RECESSED LIGHT FIXTURE, 2 REQ'D.
21. DUPLEX OUTLET ON DEDICATED CIRCUIT MOUNTED 18" ABOVE FLOOR.
22. AIR CONDITIONER- 120V/13,500 BTU ROOF MOUNTED WITH INTEGRAL THERMOSTAT.
23. HEATER 120V/1500W MOUNTED ON REST ROOM WALL, 2 REQ'D.
24. DDDR- 30" WIDE, SWING STEEL WITH BALL BEARING BUTTS, HYDRAULIC CLOSER, KEY IN KNOB LOCK, WEATHER STRIPPING AND HARDWARE.
25. 8" X 24" STAINLESS STEEL SHELF.

NOTE: THE FOLLOWING ITEMS ARE SHIPPED LOOSE CARTONS AND FIELD INSTALLED AT SITE BY OTHERS.

26. WHITE CHINA LAVATORY WITH CHROME FAUCET, 2 REQ'D.
27. WHITE CHINA WATER CLOSET WITH OPEN FRONT SEAT, 2 REQ'D.
28. WATER HEATER- ARISTON 2-1/2 GALLON POINT OF USE, 2 REQ'D

NOTE: PAR-KUT BOOTHS ARE OF SINGLE UNIT WELDED GALVANIZED STEEL CONSTRUCTION, FACTORY ASSEMBLED AND DELIVERED SET UP. FAILURE TO SECURELY ANCHOR BOOTH MAY RESULT IN OVERTURNING OF UNIT AND SERIOUS INJURY TO OCCUPANT.

- A. OPERATING UNITS UNIFIED IMPROVED SAFETY GLAZING SEI IN ANODIZED ALUMINUM WINDOW FRAMES. OPERATING WINDOWS WILL BE PROVIDED WITH INSECT SCREENS EXCEPT FOR CASHIER WINDOW.
- B. PAINT- A RUST INHIBITIVE PRIMER WITH AN INDUSTRIAL FINISH.
- C. ELECTRICAL- ALL WIRING BY PAR-KUT TO BE #12(MIN) STRANDED COPPER THHN ENCLOSED IN 1/2"(MIN) E.M.T. PER NATIONAL ELECTRIC CODE. FITTINGS, FIXTURES & DEVICES ARE U.L. LABELED. ALL WIRING TO TERMINATE AT C.B. PANEL. ALL CIRCUITS HAVE GREEN GROUND WIRE.
- D. BOOTH WILL HAVE A 3" CANDPY OVERHANG ON 3 SIDES. FRONT SIDE WILL HAVE 24" OVERHANG
- E. LIFTING RING(S) ARE PROVIDED IN ROOF.
- F. FLOOR WILL HAVE LAY IN ANTI-FATIGUE MAT.
- G. FRONT WINDOW WILL BE 68 X 40, 1/4" THICK WITH C.R LAURENCE VERTICAL TICKET WINDOW #702A AND SPEAKER TUBE #405A.
- H. AND ON SITE WORK BY PAR-KUT.

APPROVED FOR FABRICATION

BY: _____

DATE: _____

NOTE: THIS PRINT AND DESIGN ARE THE PROPERTY OF PAR-KUT INTERNATIONAL, INC. IT MUST NOT BE REPRODUCED IN ANY MANNER, NOR SHALL IT BE EXAMINED, COPIED, OR REPRODUCED IN ANY MANNER WITHOUT OUR CONSENT. IT SHALL BE USED ONLY AS A MEANS OF REFERENCE TO WORK DESIGNED AND FURNISHED BY PAR-KUT. PAR-KUT RESERVES THE RIGHT TO MAKE CHANGES WITHOUT NOTICE FOR ENGINEERING PURPOSES WITHOUT NOTICE. REVISIONS MUST BE NOTED.

PAR-KUT INTERNATIONAL, INC.
 40961 Production Drive
 Harrison Twp, Mich.
 48045-1551
 PH (586) 468-2947

DWG# 04-097 SHEET A-3

MERRILL'S MARINE TERMINAL
 PORTLAND, ME

DATE	3-9-2004	SIZE	6' X 20'	QTY	1
SCALE	AS SHOWN	DRAWN BY	NSG	REVISED	
CHK'D BY		DATE		BY	