

REV	1	85192	8	1 of 2	SCALE	1:30
REV	2	85192	8	1 of 2	DATE	8/23/02
REV	3	85192	8	1 of 2	DATE	8/23/02
REV	4	85192	8	1 of 2	DATE	8/23/02
REV	5	85192	8	1 of 2	DATE	8/23/02
REV	6	85192	8	1 of 2	DATE	8/23/02
REV	7	85192	8	1 of 2	DATE	8/23/02
REV	8	85192	8	1 of 2	DATE	8/23/02
REV	9	85192	8	1 of 2	DATE	8/23/02
REV	10	85192	8	1 of 2	DATE	8/23/02

Customer: Munters Corporation
 Project: 659493-01
 Date: 8/23/02
 By: SAH
 Checked: DM
 Approved: SAH

Customer: Munters Corporation
 Project: 659493-01
 Date: 8/23/02
 By: SAH
 Checked: DM
 Approved: SAH

Customer: Munters Corporation
 Project: 659493-01
 Date: 8/23/02
 By: SAH
 Checked: DM
 Approved: SAH

Customer: Munters Corporation
 Project: 659493-01
 Date: 8/23/02
 By: SAH
 Checked: DM
 Approved: SAH

Customer: Munters Corporation
 Project: 659493-01
 Date: 8/23/02
 By: SAH
 Checked: DM
 Approved: SAH

Customer: Munters Corporation
 Project: 659493-01
 Date: 8/23/02
 By: SAH
 Checked: DM
 Approved: SAH

Customer: Munters Corporation
 Project: 659493-01
 Date: 8/23/02
 By: SAH
 Checked: DM
 Approved: SAH

Customer: Munters Corporation
 Project: 659493-01
 Date: 8/23/02
 By: SAH
 Checked: DM
 Approved: SAH

Customer: Munters Corporation
 Project: 659493-01
 Date: 8/23/02
 By: SAH
 Checked: DM
 Approved: SAH

Customer: Munters Corporation
 Project: 659493-01
 Date: 8/23/02
 By: SAH
 Checked: DM
 Approved: SAH

Customer: Munters Corporation
 Project: 659493-01
 Date: 8/23/02
 By: SAH
 Checked: DM
 Approved: SAH

Customer: Munters Corporation
 Project: 659493-01
 Date: 8/23/02
 By: SAH
 Checked: DM
 Approved: SAH

Customer: Munters Corporation
 Project: 659493-01
 Date: 8/23/02
 By: SAH
 Checked: DM
 Approved: SAH

Customer: Munters Corporation
 Project: 659493-01
 Date: 8/23/02
 By: SAH
 Checked: DM
 Approved: SAH

Customer: Munters Corporation
 Project: 659493-01
 Date: 8/23/02
 By: SAH
 Checked: DM
 Approved: SAH

Customer: Munters Corporation
 Project: 659493-01
 Date: 8/23/02
 By: SAH
 Checked: DM
 Approved: SAH

Customer: Munters Corporation
 Project: 659493-01
 Date: 8/23/02
 By: SAH
 Checked: DM
 Approved: SAH

Customer: Munters Corporation
 Project: 659493-01
 Date: 8/23/02
 By: SAH
 Checked: DM
 Approved: SAH

Customer: Munters Corporation
 Project: 659493-01
 Date: 8/23/02
 By: SAH
 Checked: DM
 Approved: SAH

Customer: Munters Corporation
 Project: 659493-01
 Date: 8/23/02
 By: SAH
 Checked: DM
 Approved: SAH

Customer: Munters Corporation
 Project: 659493-01
 Date: 8/23/02
 By: SAH
 Checked: DM
 Approved: SAH

Customer: Munters Corporation
 Project: 659493-01
 Date: 8/23/02
 By: SAH
 Checked: DM
 Approved: SAH

Customer: Munters Corporation
 Project: 659493-01
 Date: 8/23/02
 By: SAH
 Checked: DM
 Approved: SAH

Customer: Munters Corporation
 Project: 659493-01
 Date: 8/23/02
 By: SAH
 Checked: DM
 Approved: SAH

Customer: Munters Corporation
 Project: 659493-01
 Date: 8/23/02
 By: SAH
 Checked: DM
 Approved: SAH

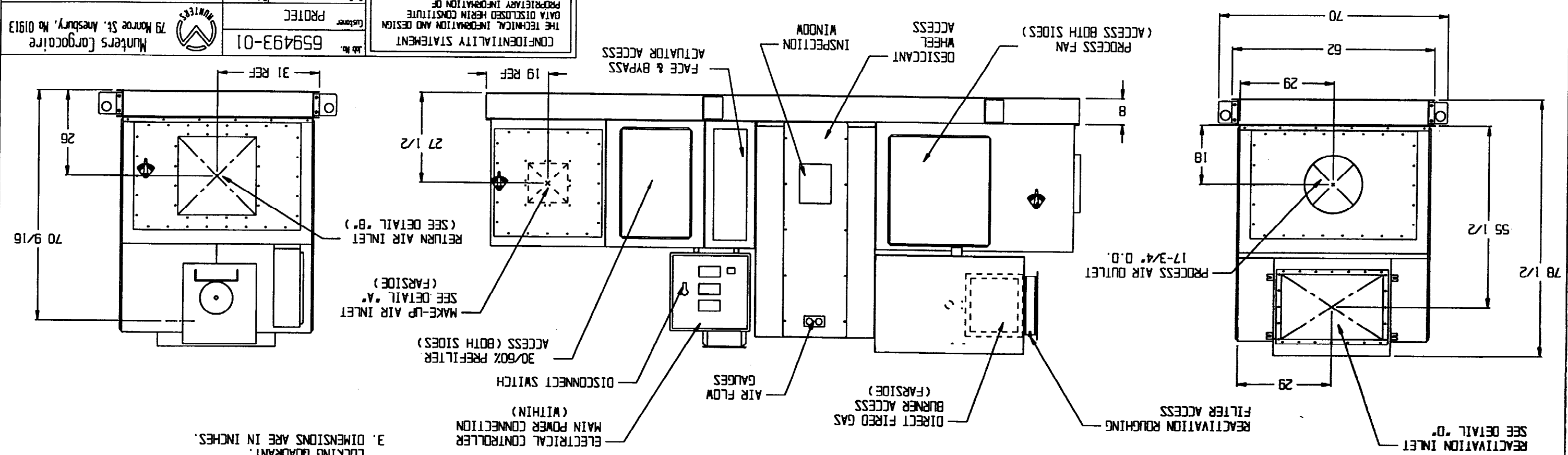
Customer: Munters Corporation
 Project: 659493-01
 Date: 8/23/02
 By: SAH
 Checked: DM
 Approved: SAH

Customer: Munters Corporation
 Project: 659493-01
 Date: 8/23/02
 By: SAH
 Checked: DM
 Approved: SAH

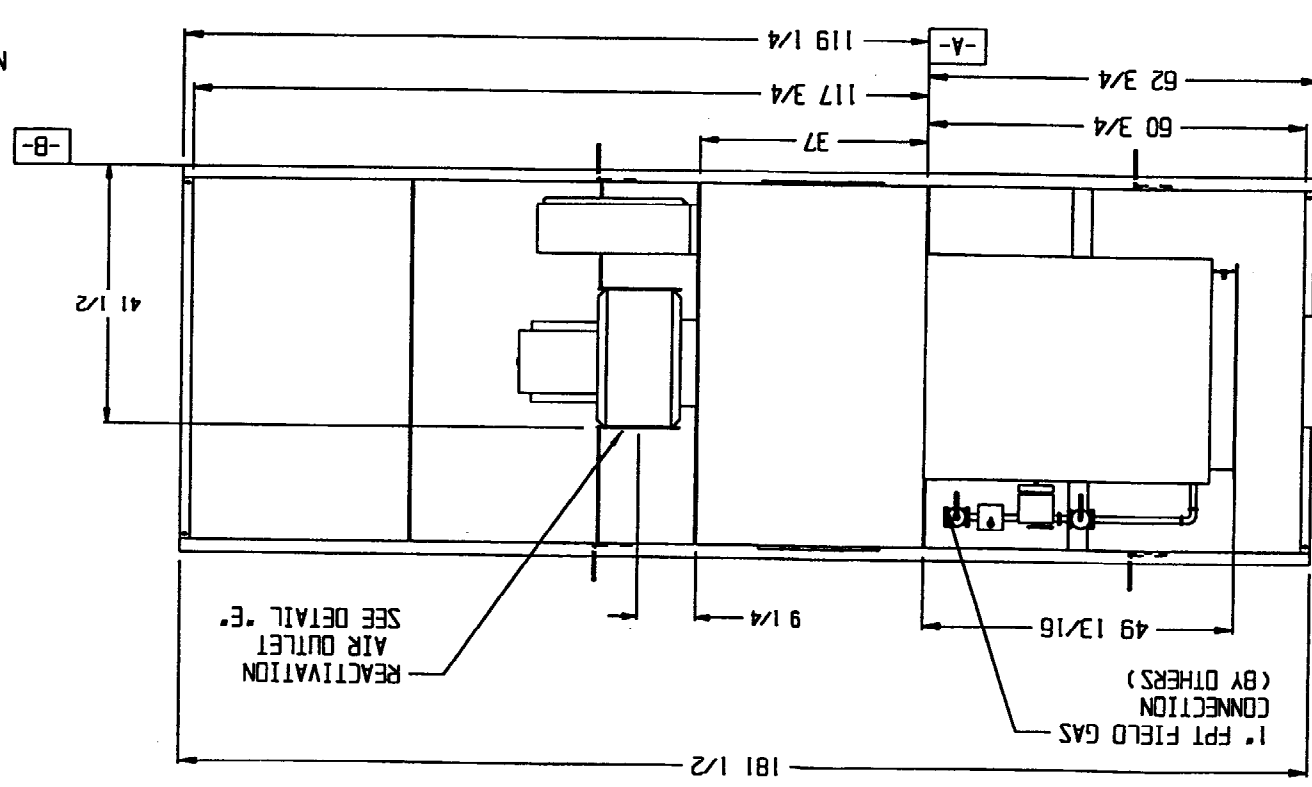
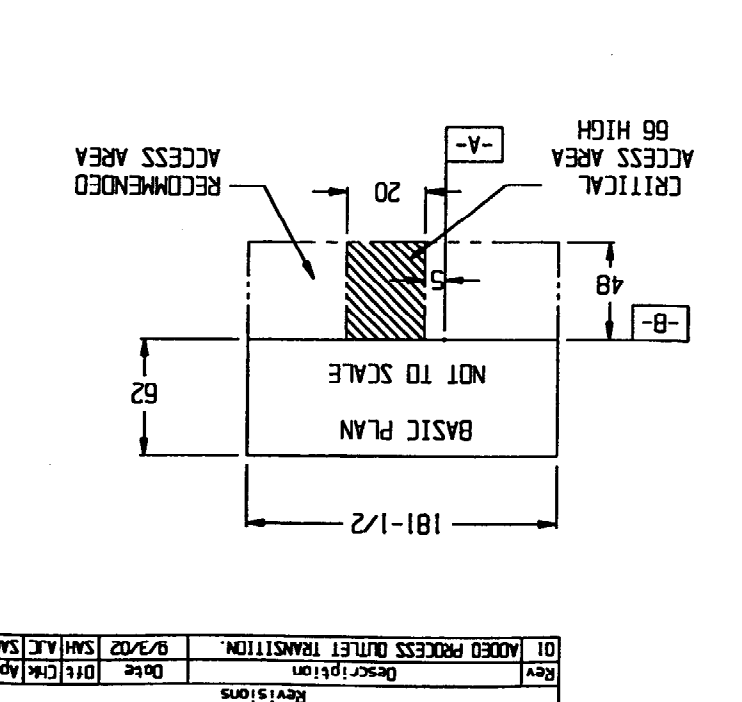
CONFIDENTIALITY STATEMENT
 THE TECHNICAL INFORMATION AND DESIGN DATA DISCLOSED HEREIN CONSTITUTE PROPRIETARY INFORMATION OF MUNTERS CORPORATION - CARSCARE DIVISION AND ARE TO BE MAINTAINED IN STRICT CONFIDENCE. THIS INFORMATION IS FOR THE SOLE USE OF OUR CUSTOMERS AND END USERS OF OUR EQUIPMENT.

PART NO. 85192-01

APPROXIMATE WT. = 3500 LBS.

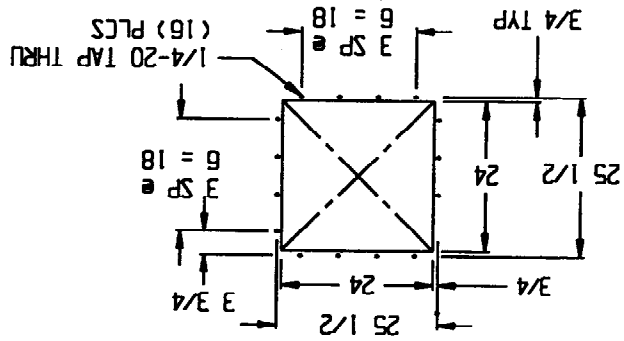


NOTE:
 1. CAPACITIES, ENERGY REQUIREMENTS AND FEATURES WILL BE ALTERED TO MATCH APPLICATIONS. CONSULT TECHNICAL DATA SHEET AND MANUAL BEFORE INSTALLING OR OPERATING UNIT.
 2. BLOWERS ARE PROVIDED WITH DAMPER AND MANUAL LOCKING QUADRANT.
 3. DIMENSIONS ARE IN INCHES.



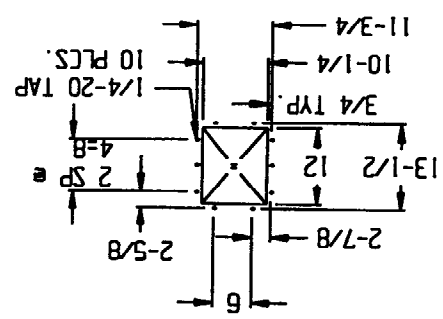
CONFIDENTIALITY STATEMENT THE TECHNICAL INFORMATION AND DESIGN DATA DISCLOSED HEREIN CONSTITUTE PROPRIETARY INFORMATION OF MUNTERS CORPORATION - CAROLINA DIVISION AND ARE TO BE MAINTAINED IN STRICT CONFIDENCE. THIS INFORMATION IS FOR THE SOLE USE OF OUR CUSTOMERS AND END USERS OF OUR EQUIPMENT.		Job No. 659493-01 Customer: PROTEC
Date: 8/23/02 Drawn by: SAH	Date: 8/23/02 Checked by: DM	Date: 8/23/02 Scale: 1:30 Sheet: 2 of 2 Size: 8
GENERAL ARRANGEMENT HCD-4500-DGA-MFBPS		Munters Corporation 79 Monroe St. Anesbury, Mo 01913
REV	85192	1

DETAIL "B"

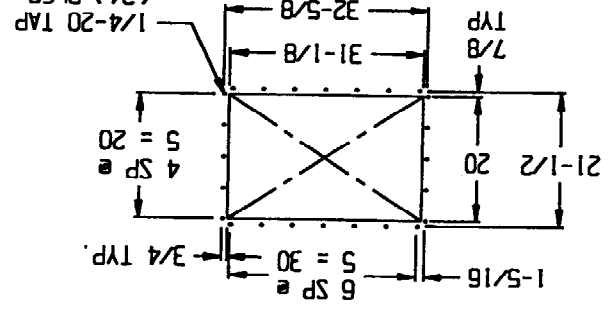


DETAIL "E"

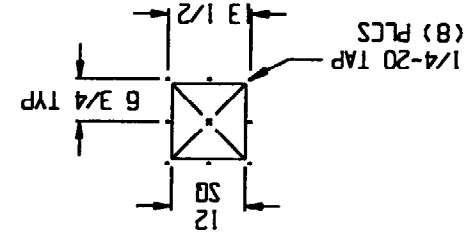
RECOMMENDED HOLE PATTERN



DETAIL "D"

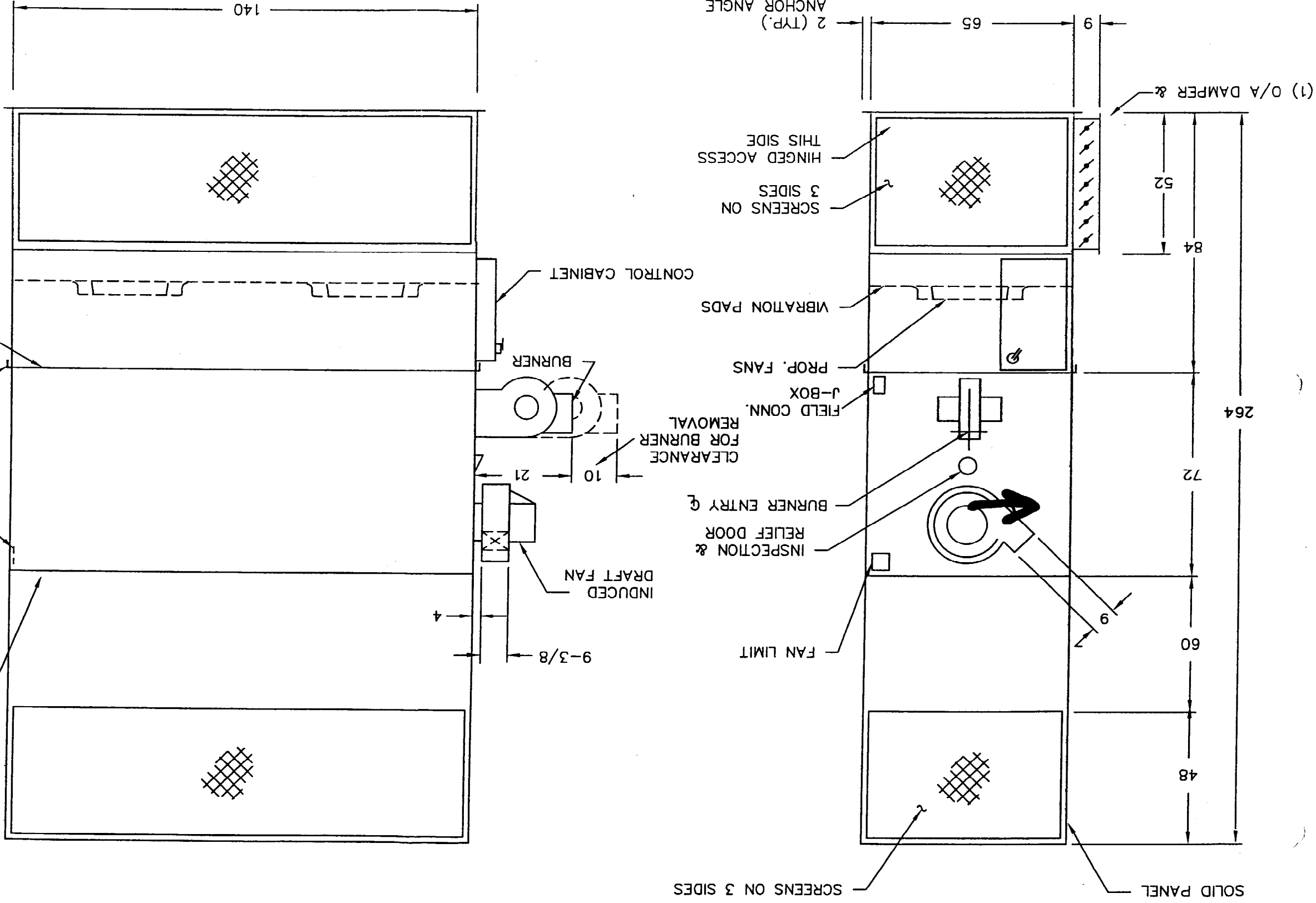


DETAIL "A"

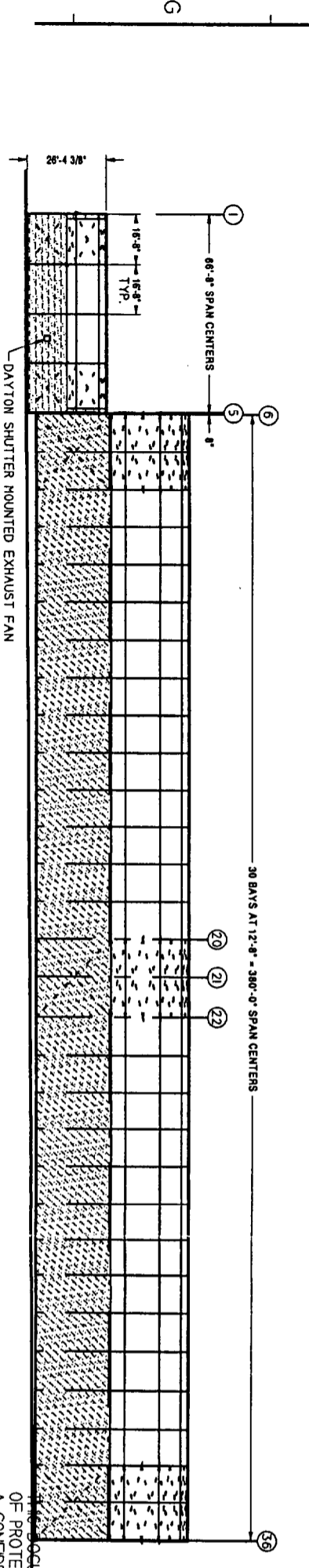
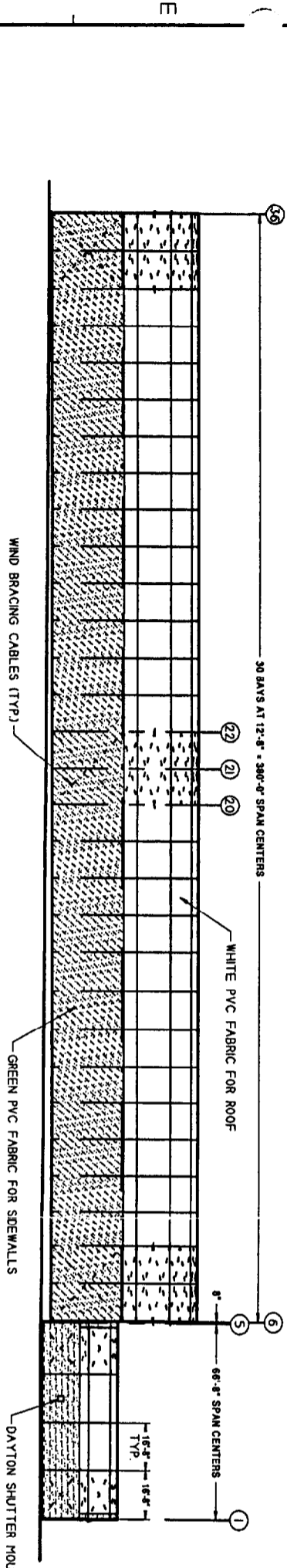
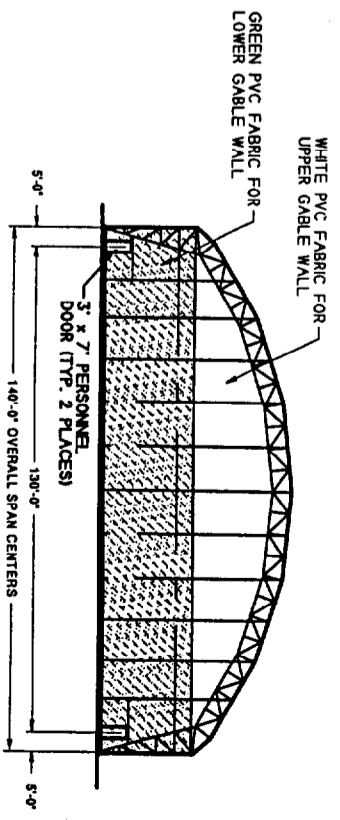
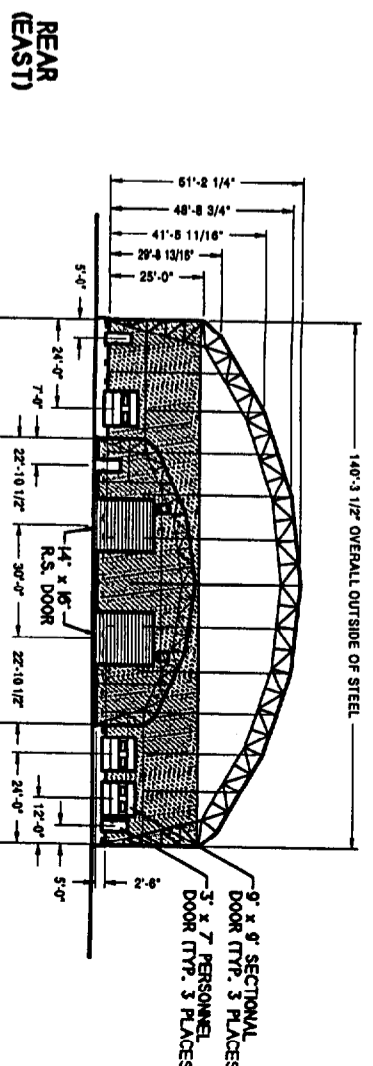
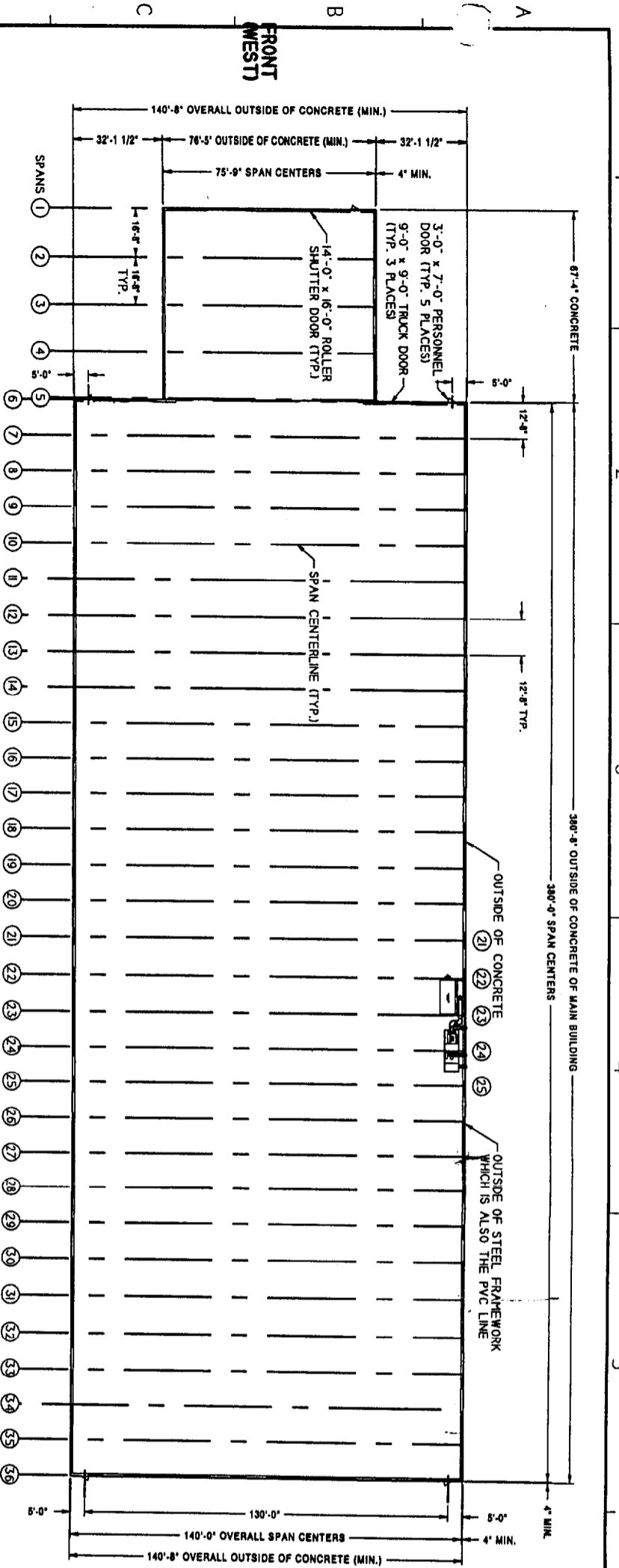


REV:	BY:	R.B.	DATE:	08/28/02
SCALE:	REV:	0	F.O.#:	86887
TITLE:	TAG:			
GHLFP-300/175				
Applied Air				
DRAWING NO. D1-86887				

REV	DATE	BY	DESCRIPTION



NOTES:
 1. UNIT SUITABLE FOR INDOOR APPLICATION.
 2. APPROXIMATE SHIPPING WEIGHT 5,600 LBS



PLAN VIEW

LEFT SIDE ELEVATION
NORTH SIDE FACING HERRILL'S ENTRANCE

RIGHT SIDE ELEVATION
SOUTH SIDE FACING WATER

NOTES:
 1) COVERING MATERIAL IS A PVC IMPREGNATED POLYESTER WEAVE FABRIC, SELF-EXTINGUISHING TO FEDERAL TEST STANDARD 191, METRIC, SPAN AND CORNERS WITH NETA STANDARD 701, USC 55-1 AND CHLOROPHENYLENE FIBRE HANSHALL'S OFFICE.
 2) FRAMEWORK IS GALVANIZED TUBULAR STEEL TRUSS STEEL MEMBERS, STEEL PLATE AND SHAPES ARE AISC, STEEL TUBING IS A500B.
 THIS DOCUMENT IS THE EXCLUSIVE PROPERTY OF PROTEC, INC. AND IS FURNISHED ON A CONFIDENTIAL BASIS. NO PORTION OF THIS DOCUMENT MAY BE COPIED, TRACED, PHOTOGRAPHED, OR IN ANY OTHER WAY REPRODUCED NOR MAY ANY OTHER ITEM HEREON DEPICTED BE AS SHOWN WITHOUT THE WRITTEN CONSENT OF PROTEC, INC.

REV	DESCRIPTION	DATE	MODIFIED BY
<p>PROTEC, INC. 216 LAFAYETTE RD. N. HAMPTON, NH 03862 PH (603) 964-9421 FX (603) 964-2271</p>			
<p>MERRILL VI D-1 & AIRTURNOVER SYSTEM PLAN AND ELEVATION VIEW</p>			
SIZE	SCALE	REFERENCE	
11 X 17	NONE	RUBB35206	
DATE	12AUG02	SHEET	DWG NO 2566R1450
		OFF	REV

DEPT. OF BUILDING INSPECTION
 CITY OF PORTLAND, ME
RECEIVED
 NOV 14 2002