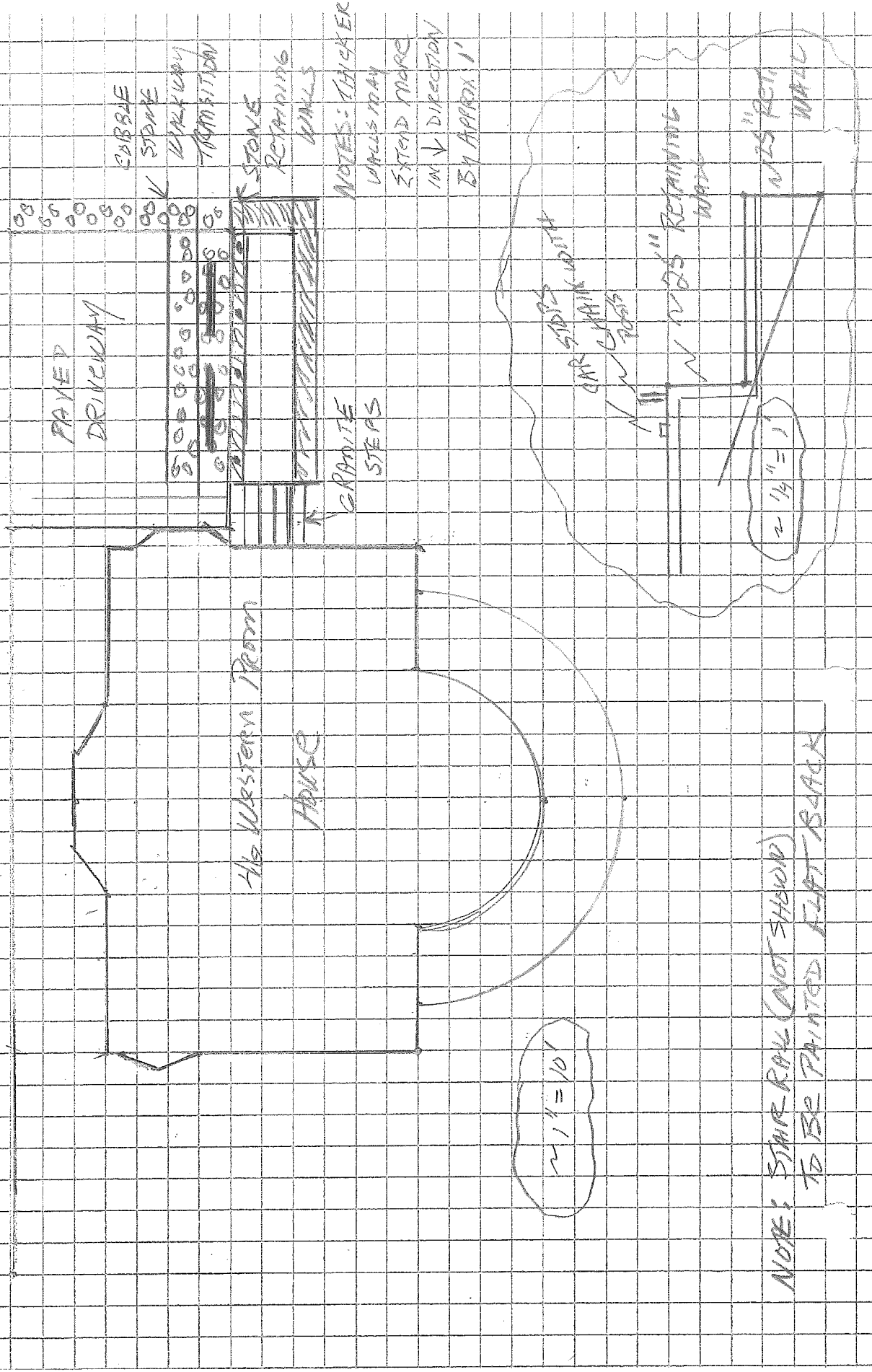


5/23/14 PAE

# PROPOSED CHANGE

WESTERN PROM



COBBLE

STONE

WALKWAY

TRANSITION

STONE

RETAINING

WALLS

NOTES: THICKER

WALKWAY

EXTEND MORE

IN ↓ DIRECTION

BY APPROX 1'

PAVED DRIVEWAY

GRANITE STEPS

WESTERN PROM HOUSE

~ 1" = 10'

CAR STOPS WITH CHAIN LINK POSTS

~ 2" = 5' RETAINING WALL

~ 1/4" = 1'

~ 2" = 5' RETAINING WALL

NOTE: SIMILAR ROW (NOT SHOWN) TO BE PAINTED LIGHT BLUE