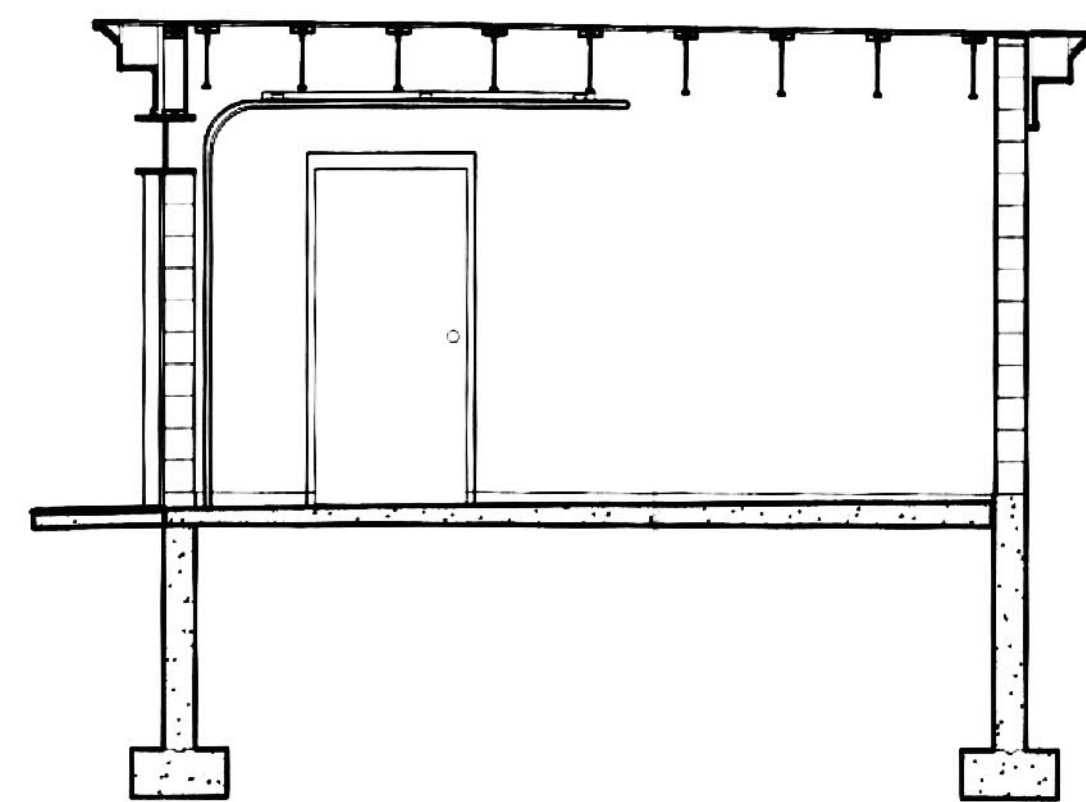


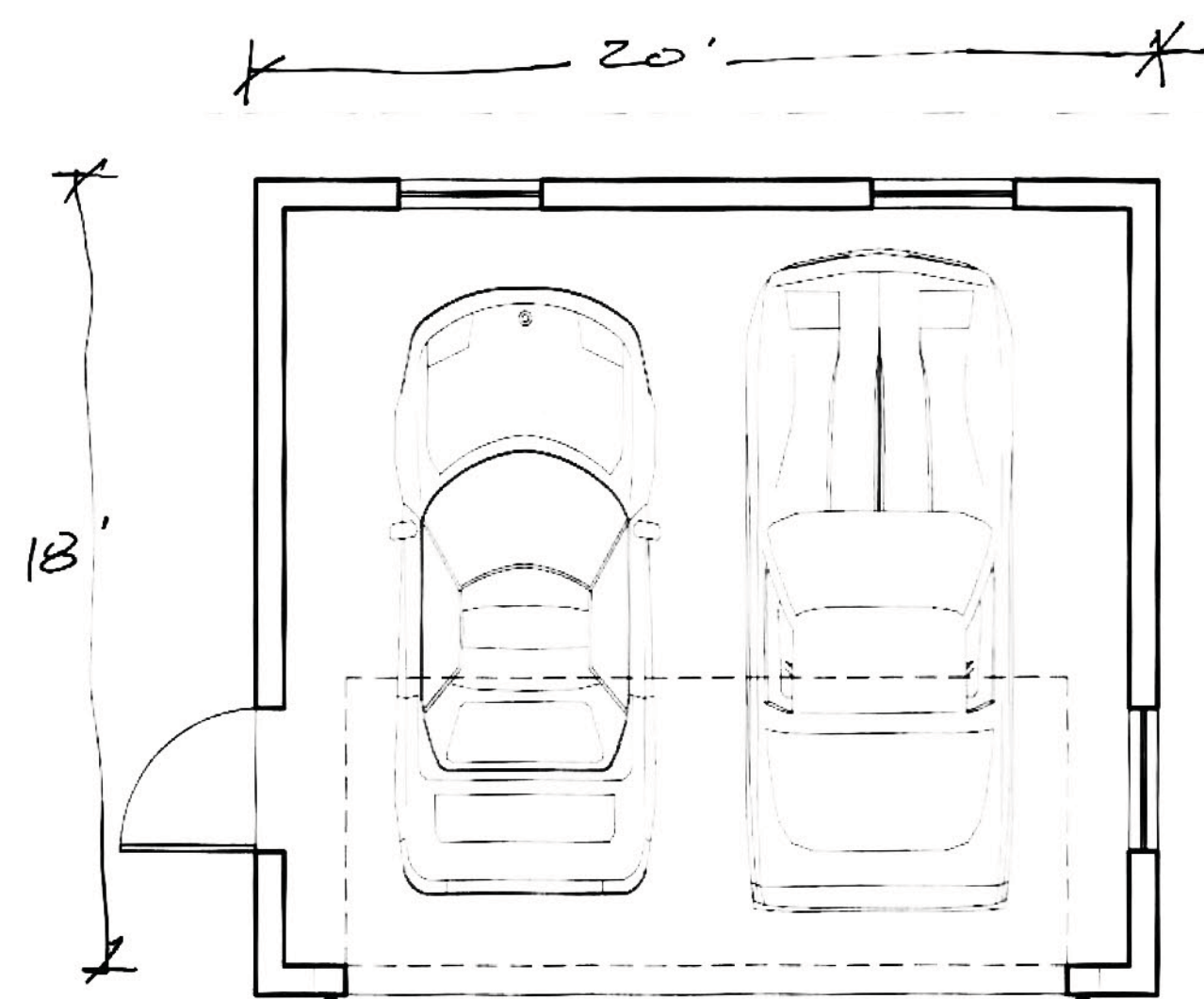
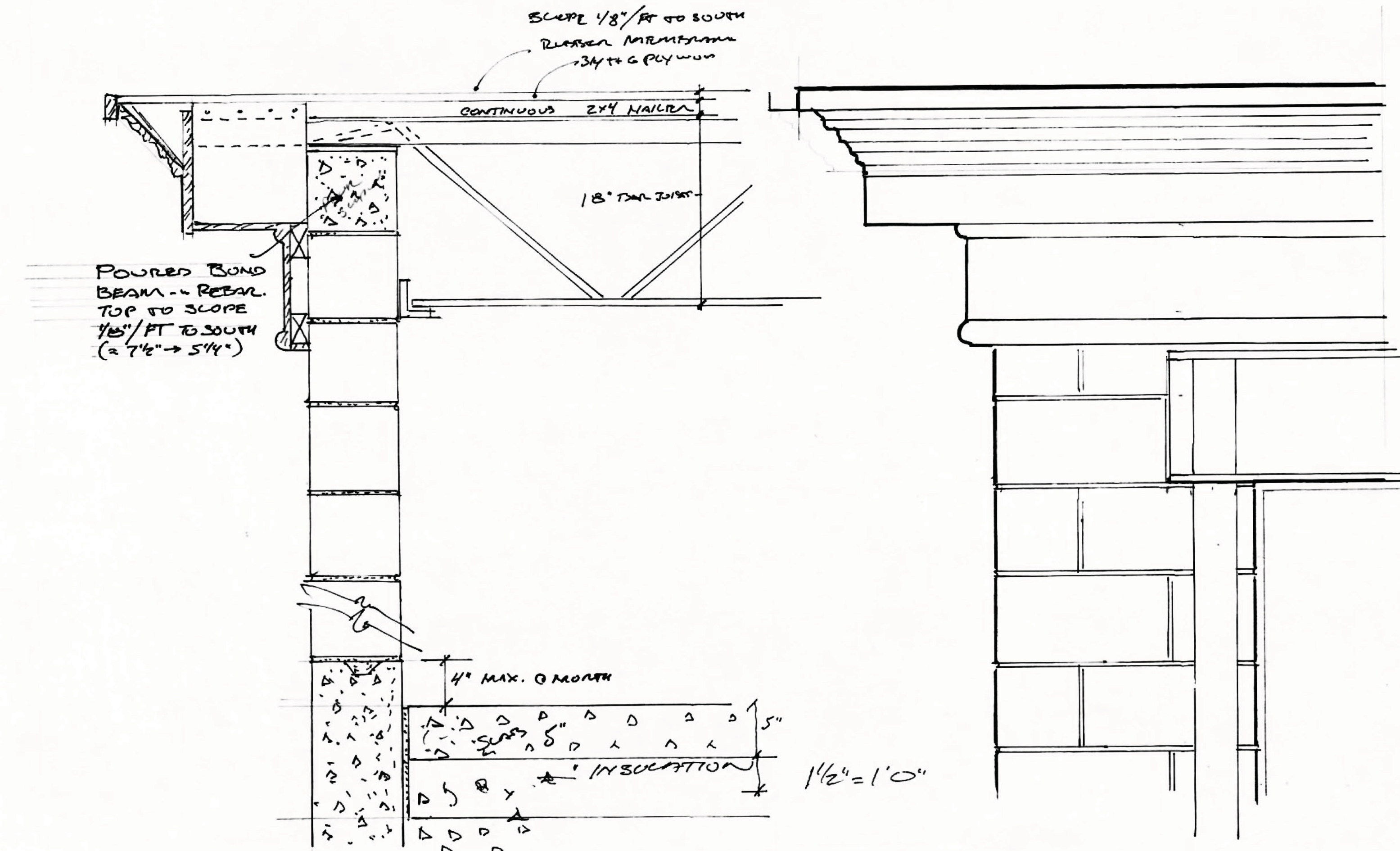
1 FRONT ELEVATION

SCALE: 1/4" = 1'-0"



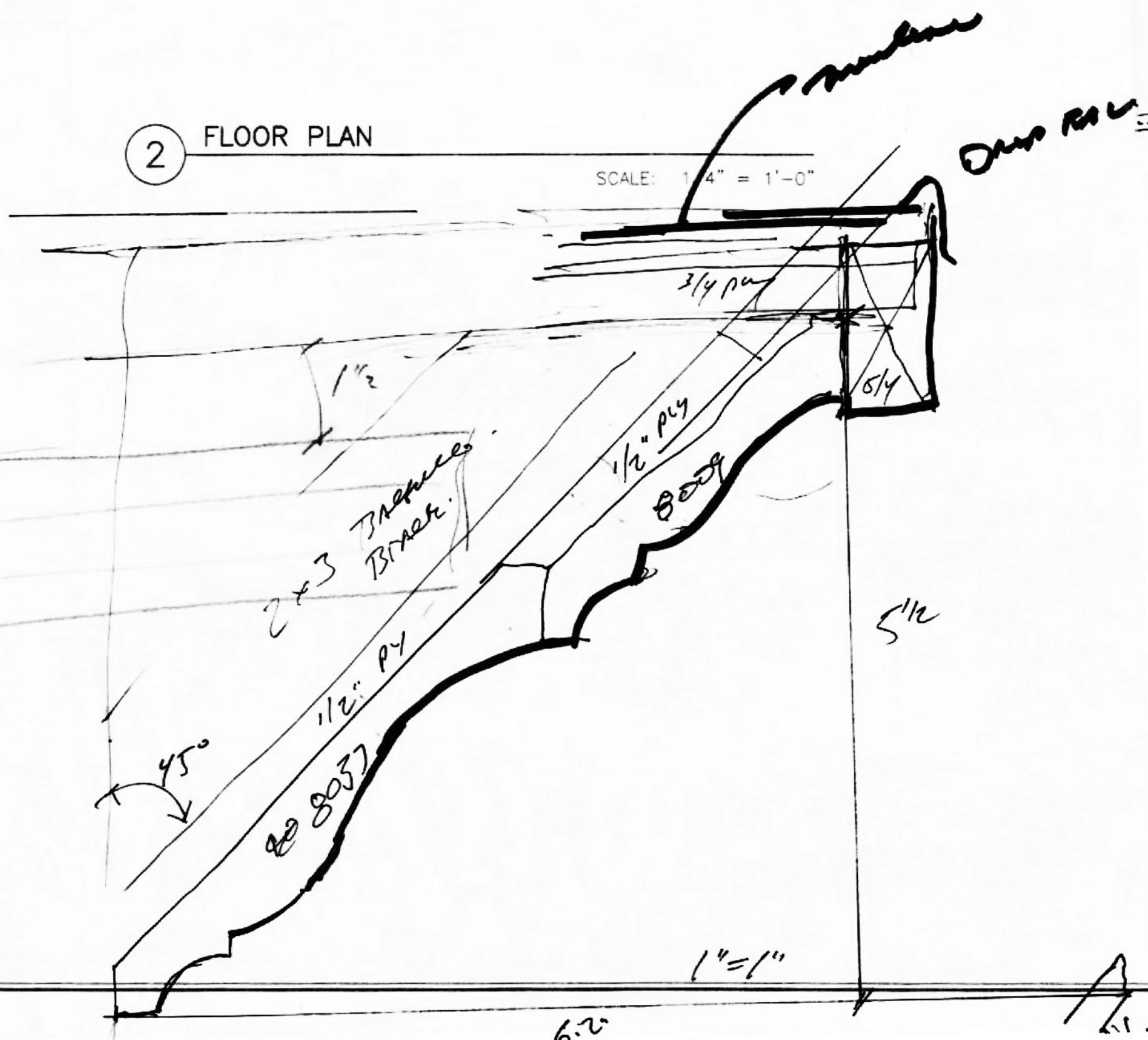
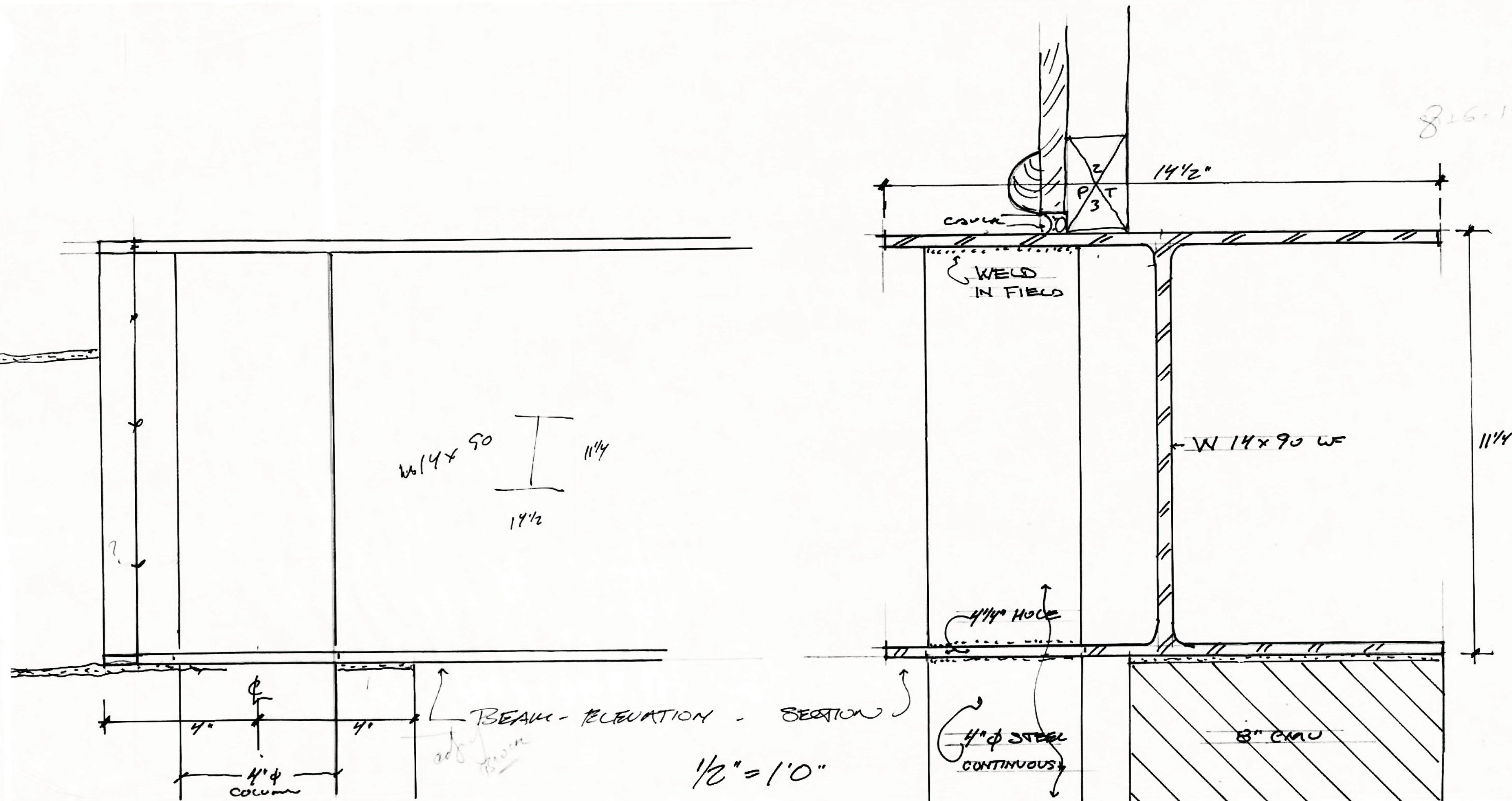
3 TRANSVERSE SECTION

SCALE: 1/4" = 1'-0"



2 FLOOR PLAN

SCALE: 1/4" = 1'-0"



PRELIMINARY
NOT FOR CONSTRUCTION

DATE	FOR
7/25/14	REVIEW