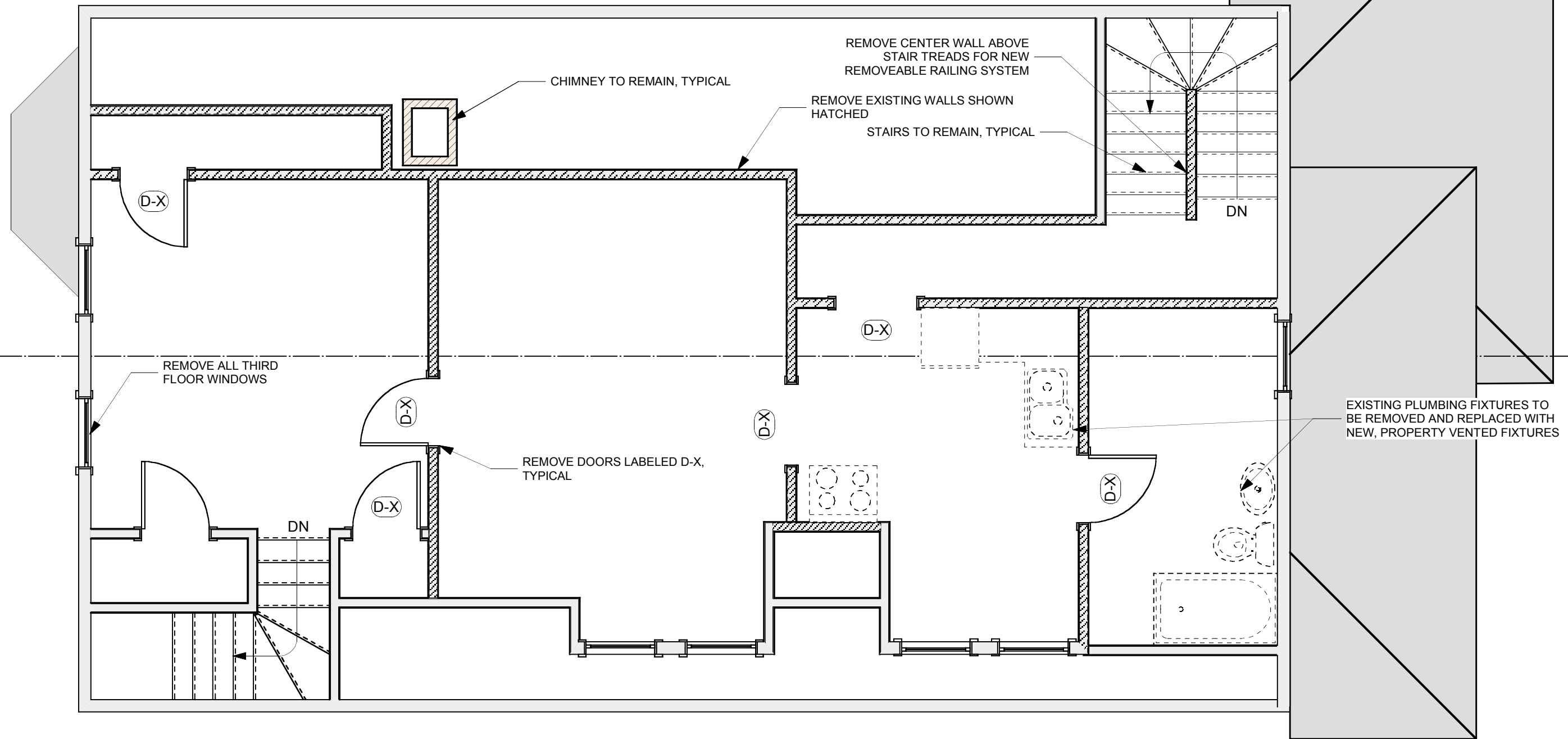




LEGEND	
HARD-WIRED CO/SMOKE DETECTOR W/ BATTERY BACKUP	(S)
1-HOUR RATED PARTITION	
PARTITION TO BE REMOVED	
EXISTING PARTITION TO REMAIN	
NEW PARTITION	



1 Existing Third Floor / Demo Plan
 Scale: 1/4" = 1'-0"

Interior Renovations for Feddersen Residence Portland, Maine 481 Danforth Street CBL 71/A/1	Residential Design Studio, LLC Carol A. Morrisette 174 Danforth Street Portland, Maine 04102 T 207.699.4184 C 207.671.7965	A3.EX interior revision 1 bp #01283 10/2/13
---	--	---