



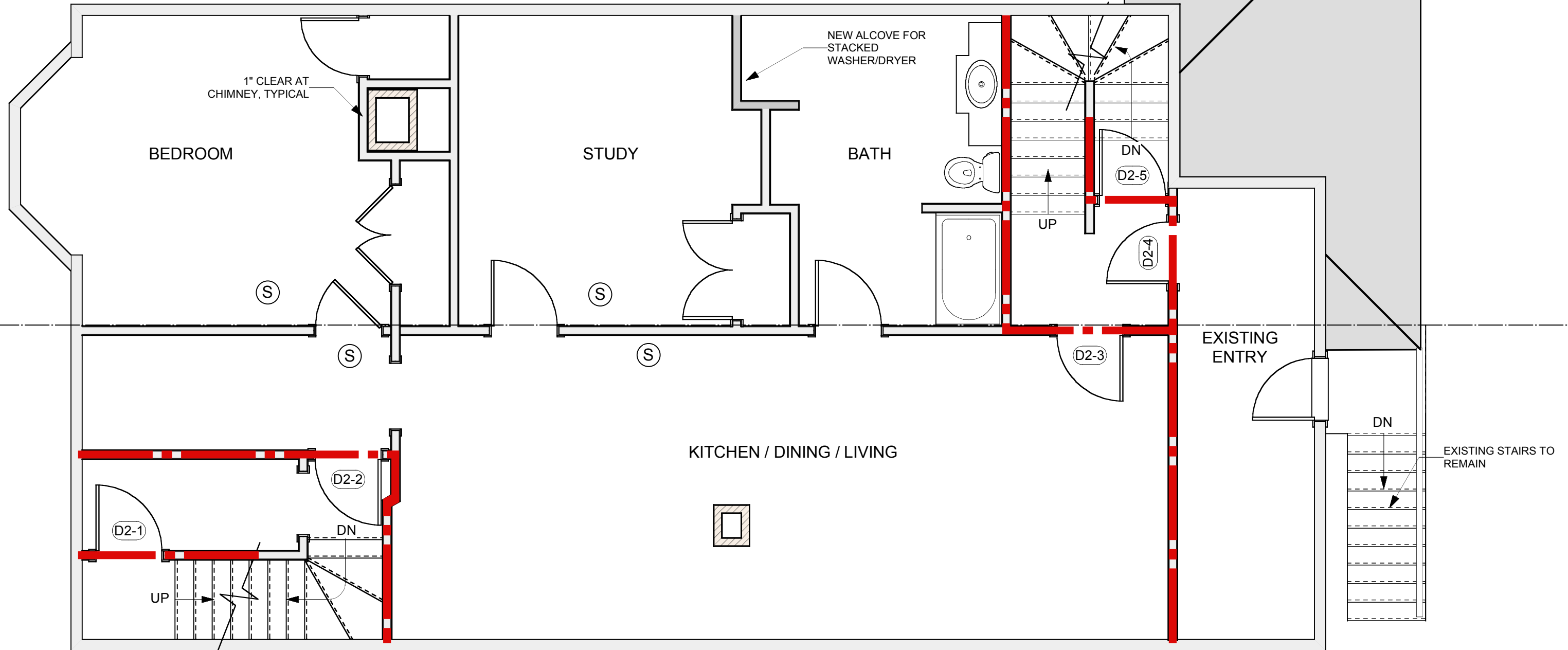
2ND FLOOR SCOPE OF WORK:

NEW HARD WIRED SMOKE/CO DETECTORS W/ BATTERY BACKUP
1-HOUR RATED PARTITIONS AT EGRESS STAIRS AS NOTED ON PLAN
NEW INSULATION
REPLACE PLUMBING FIXTURES & WIRING - BRING UP TO CODE
RELOCATE INTERIOR PARTITIONS AS SHOWN
INSTALL NEW KITCHEN W/ RANGE HOOD (TO REPLACE EXISTING) - LOCATION TBD
NEW RINNAI-TYPE HEATERS TO REPLACE EXISTING HEATERS
OPTION: NEW MINI-SPLIT A/C SYSTEM

NOTE:

ALL STAIRS SHOWN ON SECOND FLOOR ARE EXISTING TO REMAIN
NEW FRAMING AT EXISTING CHIMNEY MUST PROVIDE 1" CLEAR AIR SPACE AROUND CHIMNEY

RECONFIGURED SPACE (LEVEL 2 ALTERATION) @ 2ND FLOOR
BATH 11 SF
+ HALL 13 SF
SUBTOTAL 2ND FLOOR (LEVEL 2): 24 SF



LEGEND

- HARD-WIRED CO/SMOKE DETECTOR W/ BATTERY BACKUP S
- 1-HOUR RATED PARTITION
- PARTITION TO BE REMOVED
- EXISTING PARTITION TO REMAIN
- NEW PARTITION

1 Second Floor Plan
Scale: 1/4" = 1'-0"



<p>Interior Renovations for</p> <p>Feddersen Residence</p> <p>Portland, Maine</p> <p>481 Danforth Street CBL 71/A/1</p>	<p>Residential Design Studio, LLC</p> <p>Carol A. Morrisette</p> <p>174 Danforth Street Portland, Maine 04102</p> <p>T 207.699.4184 C 207.671.7965</p>	<p>A2</p> <p>interior revision 1 bp #01283 10/2/13</p>
--	---	---