



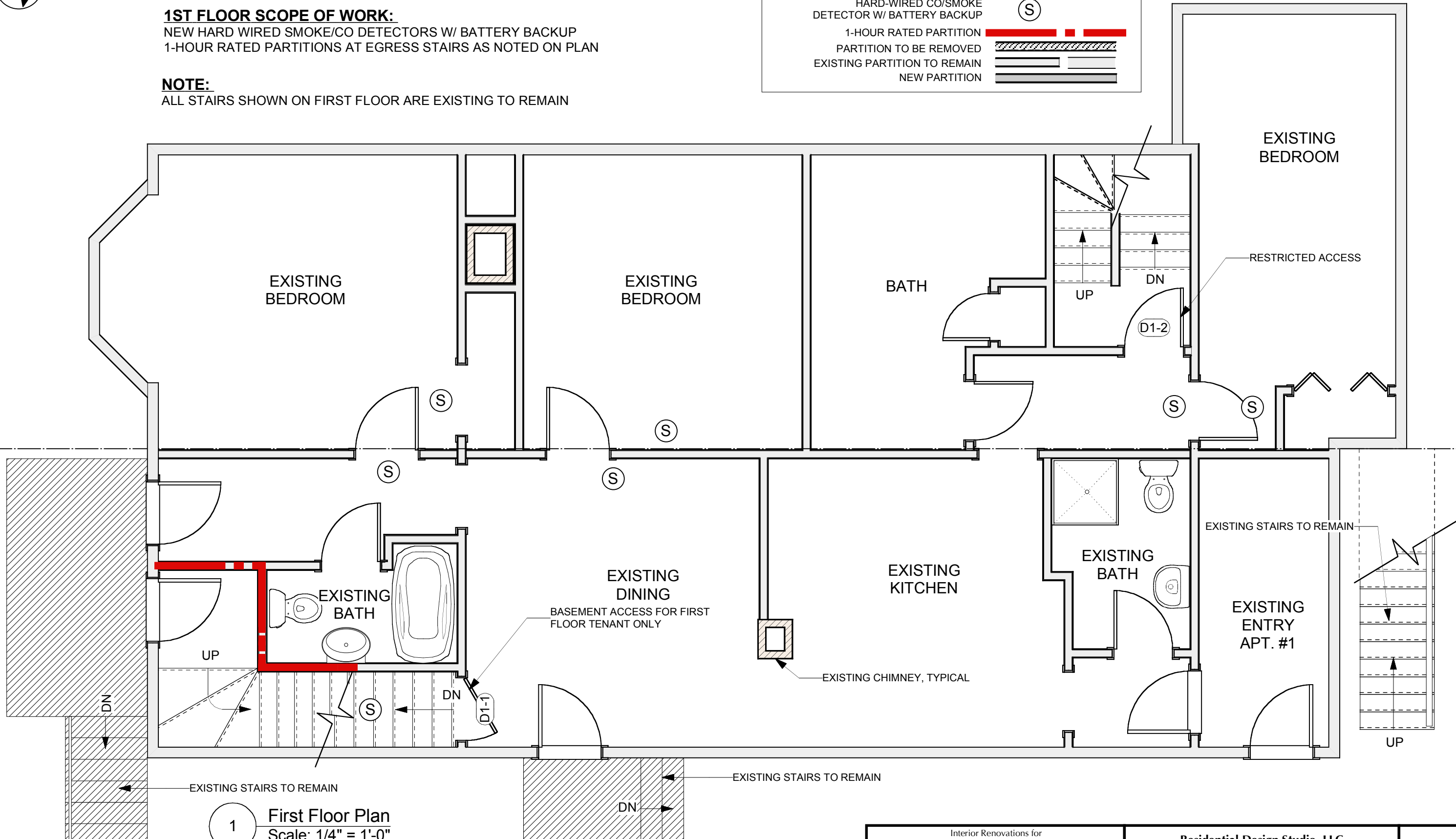
1ST FLOOR SCOPE OF WORK:

NEW HARD WIRED SMOKE/CO DETECTORS W/ BATTERY BACKUP
1-HOUR RATED PARTITIONS AT EGRESS STAIRS AS NOTED ON PLAN

NOTE:

ALL STAIRS SHOWN ON FIRST FLOOR ARE EXISTING TO REMAIN

LEGEND	
HARD-WIRED CO/SMOKE DETECTOR W/ BATTERY BACKUP	(S)
1-HOUR RATED PARTITION	
PARTITION TO BE REMOVED	
EXISTING PARTITION TO REMAIN	
NEW PARTITION	



1 First Floor Plan
Scale: 1/4" = 1'-0"



Interior Renovations for Feddersen Residence Portland, Maine 481 Danforth Street CBL 71/A/1	Residential Design Studio, LLC Carol A. Morrissette 174 Danforth Street Portland, Maine 04102 T 207.699.4184 C 207.671.7965	A1 interior revision 1 bp #01283 10/2/13
---	---	--