

general notes

The site is located at 40 Bowdoin Street Portland

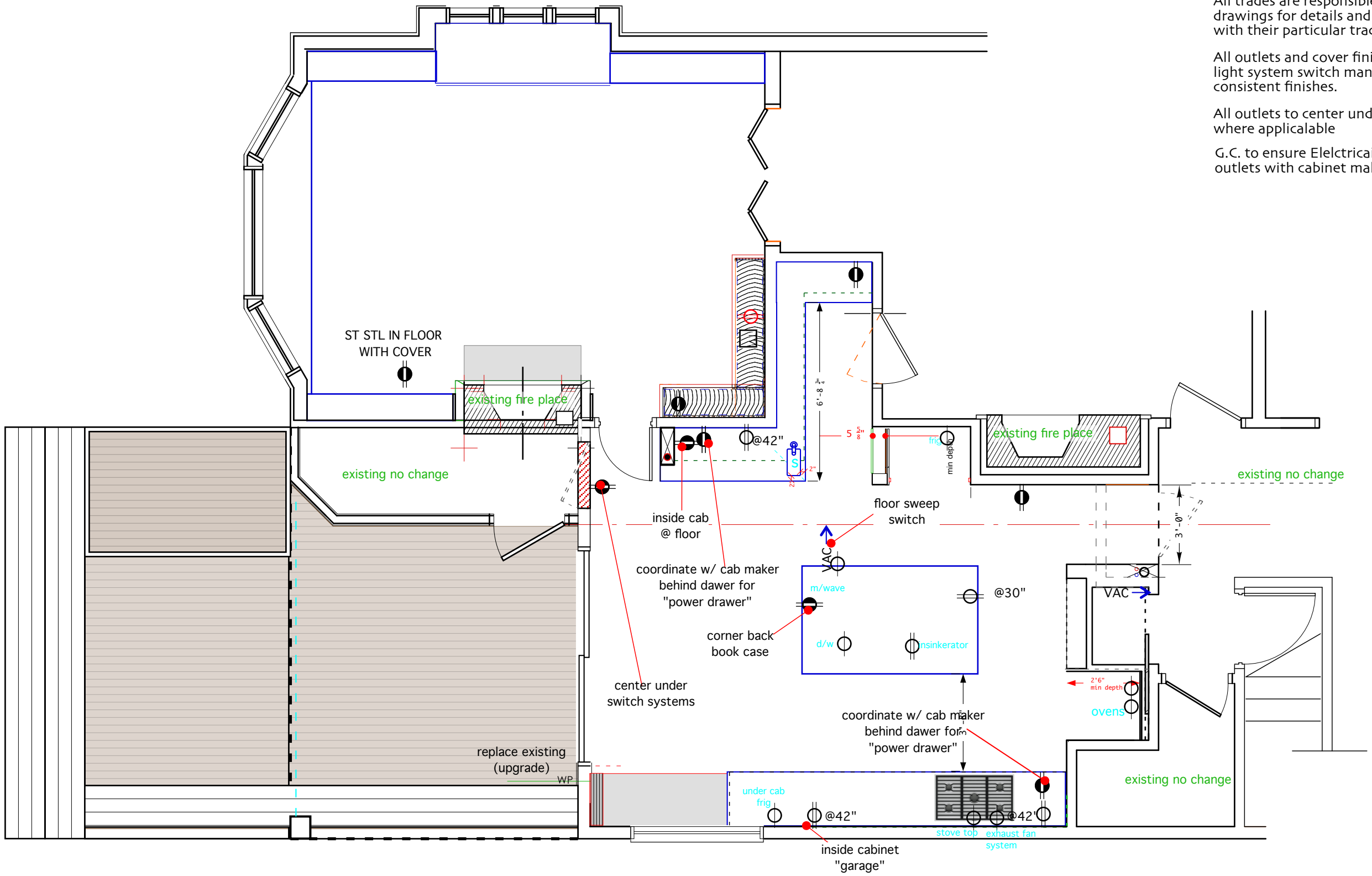
All applicable Federal, State, and Munciple regulations shall be followed, including the Federal Department of Labor Occupational Saftey and Health.

All trades are responsible for reviewing the Architectural drawings for details and **coordinating** relevant conditions with their particular trade.

All outlets and cover finishes to be oordinated with light system switch manufacturerer to ensure consistent finishes.

All outlets to center under switches or lamps sytems where applicable

G.C. to ensure Elctricain coordinates, in or on cabinet switces/ outlets with cabinet maker/ documentation for proper placement.



KEY

- SMOKE DETECTOR
- DUPLEX
- SPLIT WIRED
- QUAD
- GFCI
- WP WEATHER PROTECTED
- TV-CAPLE/DUPLEX
- VAC →
- dedicated for appliances

12_18_17
 bowdoin street
 electrical outlets
 PLAN
 1/4"=1'-0"

 E-1.1