

general notes

The site is located at 40 Bowdoin Street Portland

All applicable Federal, State, and Munciple regulations shall be followed, including the Federal Department of Labor Occupational Saftey and Health.

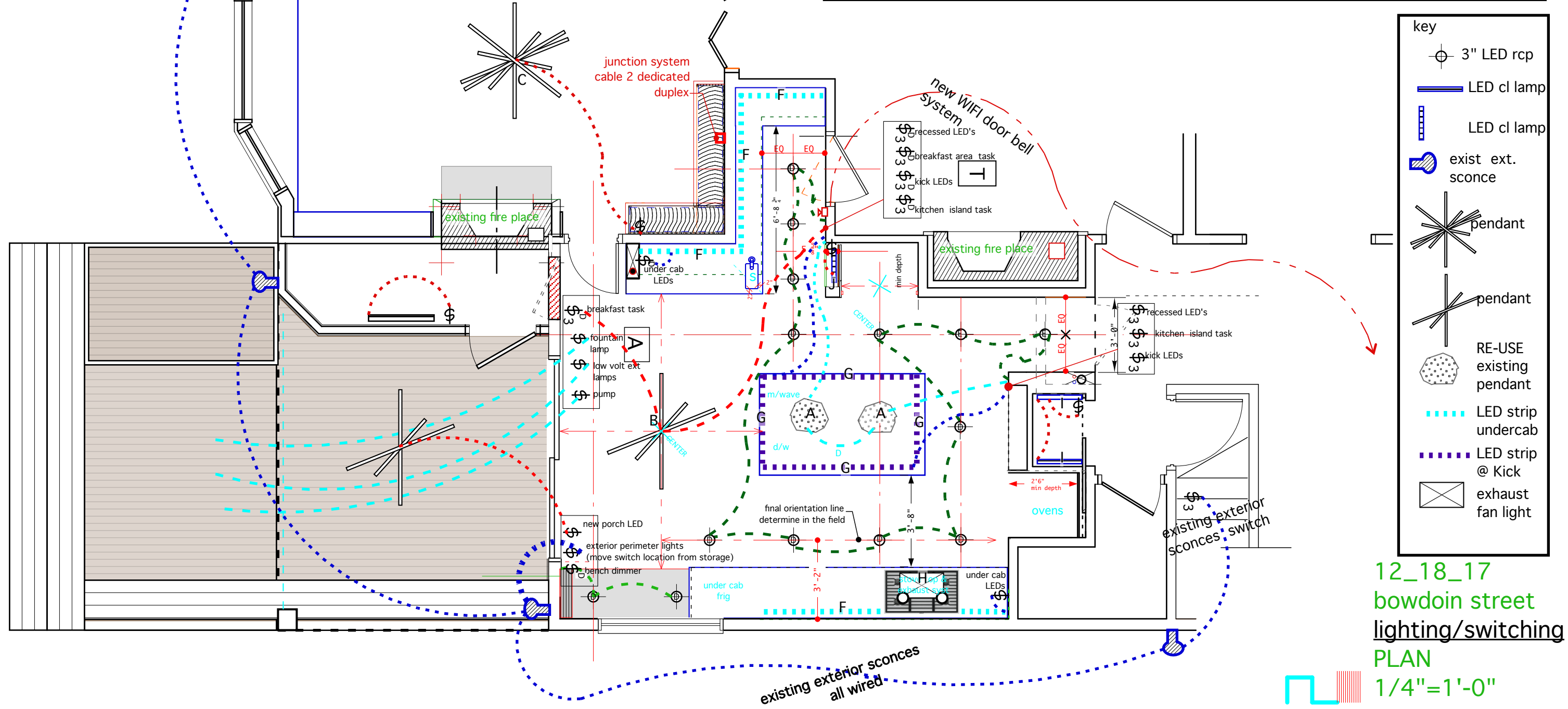
All trades are responsible for reviewing the Architectural drawings for details and **coordinating** relevant conditions with their particular trade.

All outlets and cover finishes to be oordinated with light system switch manufacturerer to ensure consistent finishes.

All outlets to center under switches or lamps systems where applicable

existing exterior sconces
all wired

| Electrical Fixture schedule | | | | | | | | |
|-----------------------------|------|--------------------------------|--------------|--------------------------------------|------|-------------|----------------------------------|---|
| ID | QTY | LOCATION | manuf. | model | trim | lamp | dimmer | NOTES |
| A | 2 | island centered | | 0 | | | | at site store safely |
| B | 1 | breakfast centered | STX or equal | 3 lamp LED | 0 | | dimable vif with G.C electrician | after democentral location to be determined |
| C | 1 | library | STX or equal | 5 lamp led | 0 | | dimable vif with G.C electrician | thimble pre exists in ceiling no wiring |
| D | 12 | kitchen cab/ Bench circulation | element | HOUSING:E3R-FF-LHWD TRIM:E3R-F-F-O-W | 3" | WARM DIM LE | dimable vif with G.C electrician | element 3" ADJ DOWN LIGHT WITH CLEAR REFLECTOR |
| E | 2 | kitchen circ/entry wall | element | HOUSING:E3R-F-LH-WD TRIM:E3R-F-F-O-W | 3" | WARM DIM LE | dimable vif with G.C electrician | element 3"DUAL ADJ DOWN LIGHT WITH CLEAR REFLECTOR |
| F | =22' | under cab LED srip | not chosen | | | | | VERIFY ORDER # NOT CLEAR IN SPEC SHEET coordinate with cabinet maker for space in cab and coordination with power |
| G | =20 | toe kick LED | not chosen | | | | | coordinate with cabinet maker for space in cab and coordination with power |
| H | | stove top | wolf | | | | | see appliance schedule for data |
| I | 1 | coat closet | | | | LED | | 2'-0" w/lens |
| J | 1 | broom closet | | | | LED | | 16" w/lens |



12_18_17
bowdoin street
lighting/switching
PLAN
1/4"=1'-0"
E-1.0