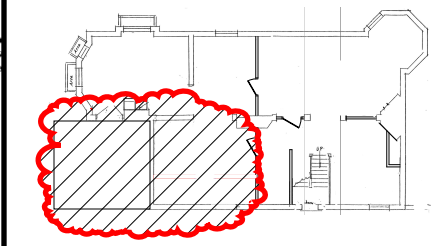


location key



area at grade

demo key

- G1 remove door and frame prep through-way, align water w/ soil pipe determine max passage width (min 34")
- G2 remove door and frame prep new closet
- G3 remove portions of curret closet prep for cabinetry systems
- G4 remove flooring and 1st level subflooring determine what has to go to insert new heating and flooring systems
- G5 remove all counter tops and cabinets & downdraft systems
- G6 remove to reposition vacuum under cab vent
- G7 remove door and related framing and posts [as needed] refer to plan, door or window schedule spre for finishes as specified in plan
- G8 remove drywall chase determin min dimension
- G9 remove book cases
- G10 remove failed bricks and repair exist.fire box wall
- G11 remove T/G ceiling replace prep to replace in matching product
- G12 remove entire ceiling drywall systems all electrical components and wiring route to new 1996 breaker box
- G13 remove window and prep for new structure and unit
- G14 remove slider and prep for new structure and unit

12\_18\_17  
bowdoin street  
**DEMOLITION**  
PLAN  
1/4"=1'-0"

**D-1.1 DEMOLITION KITCHEN AREA**