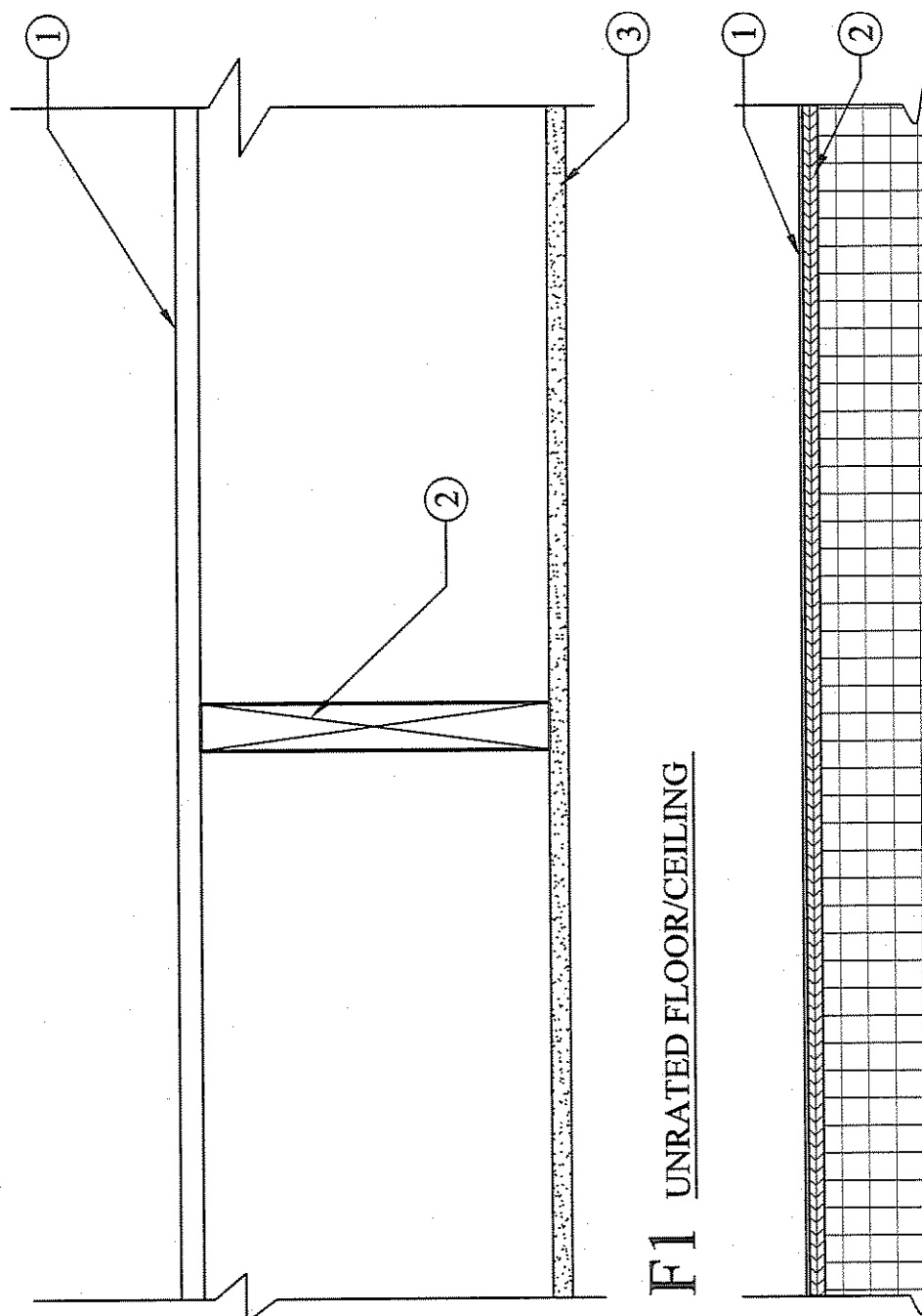


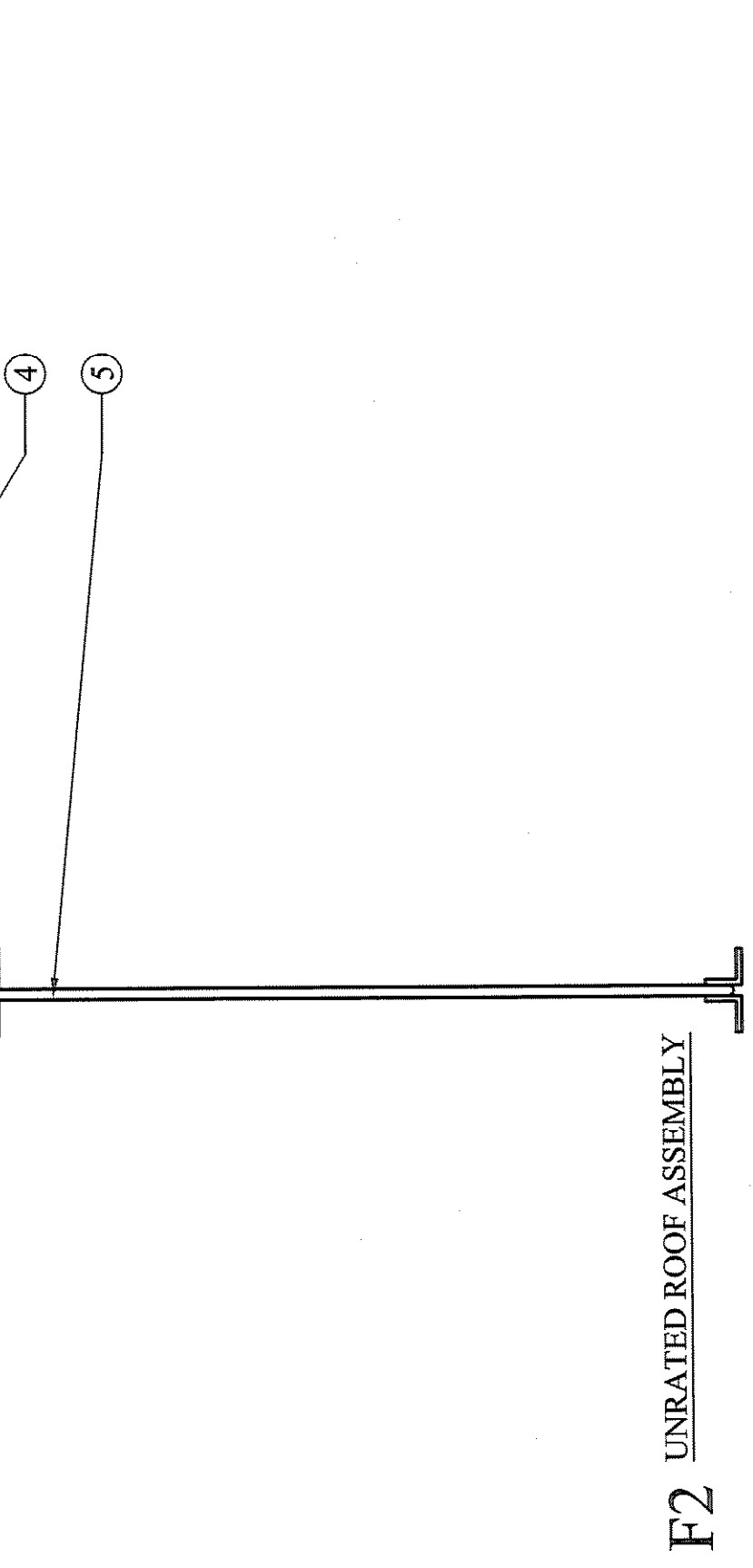
# ROOF & FLOOR/CEILING TYPES



**F1** UNRATED FLOOR/CEILING

- UNRATED ROOF ASSEMBLY**
1. Roof Covering - .060" EPDM fully adhered roof
  2. Roof Protection Board - 7/16" OSB sheathing
  3. Insulation - Six inches isocyanurate rigid insulation to accomplish R-Value of 38.
  4. Roof Deck - 20 gauge by 1 1/2" Type B painted steel deck. Prime and Paint.
  5. Bar Joists - Steel bar joists. Prime and Paint. SEE STRUCTURALS FOR DEPTH AND LAYOUT.

**F2** UNRATED ROOF ASSEMBLY

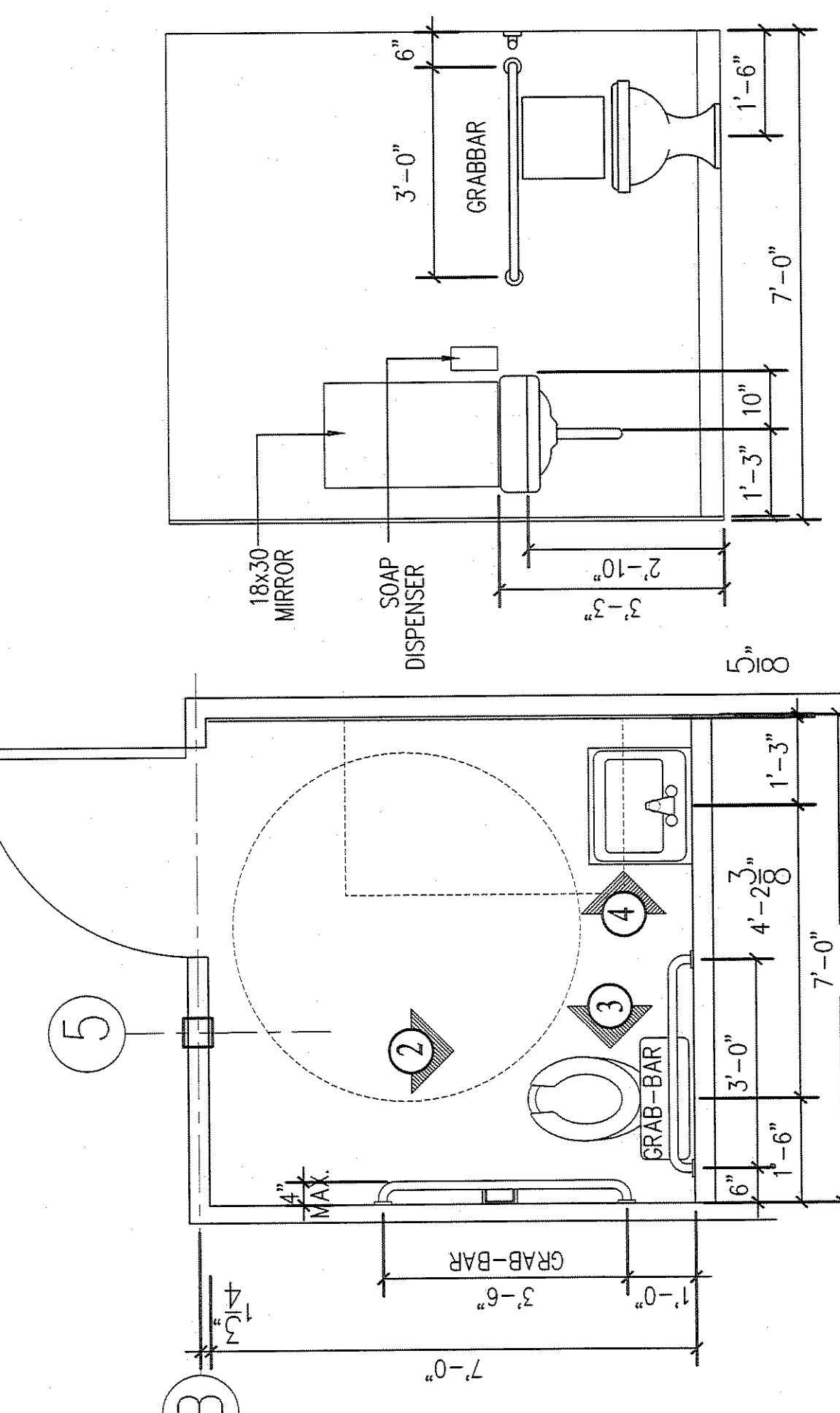
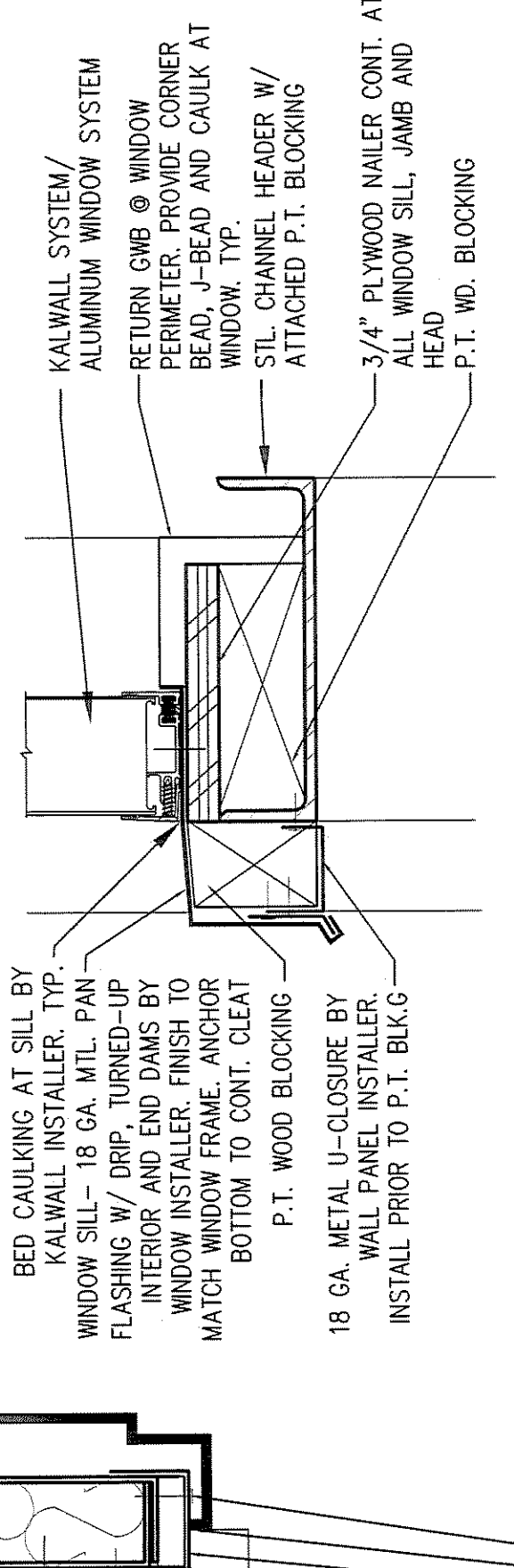


**F2** UNRATED ROOF ASSEMBLY

1. VERT. STEEL CHANNELS FROM HEADER TO INTERIOR OF ROOF BEAM. SEE STRUCT. DWGS. AND SECT. 2/FAT FOR WELDED STL. PLATE SIZES & LOCATIONS
2. STL CHANNEL HEADER W/ ATTACHED P.T. BLOCKING
3. 3/4" PLYWOOD NAILER CONT. AT ALL WINDOW SILL, JAMB AND HEAD
4. RETURN GWB @ WINDOW FERMIER. PROVIDE CORNER BEAD, J-BEAD AND CAULK AT WINDOW. TYP.
5. KALWALL SYSTEM/ ALUMINUM WINDOW SYSTEM

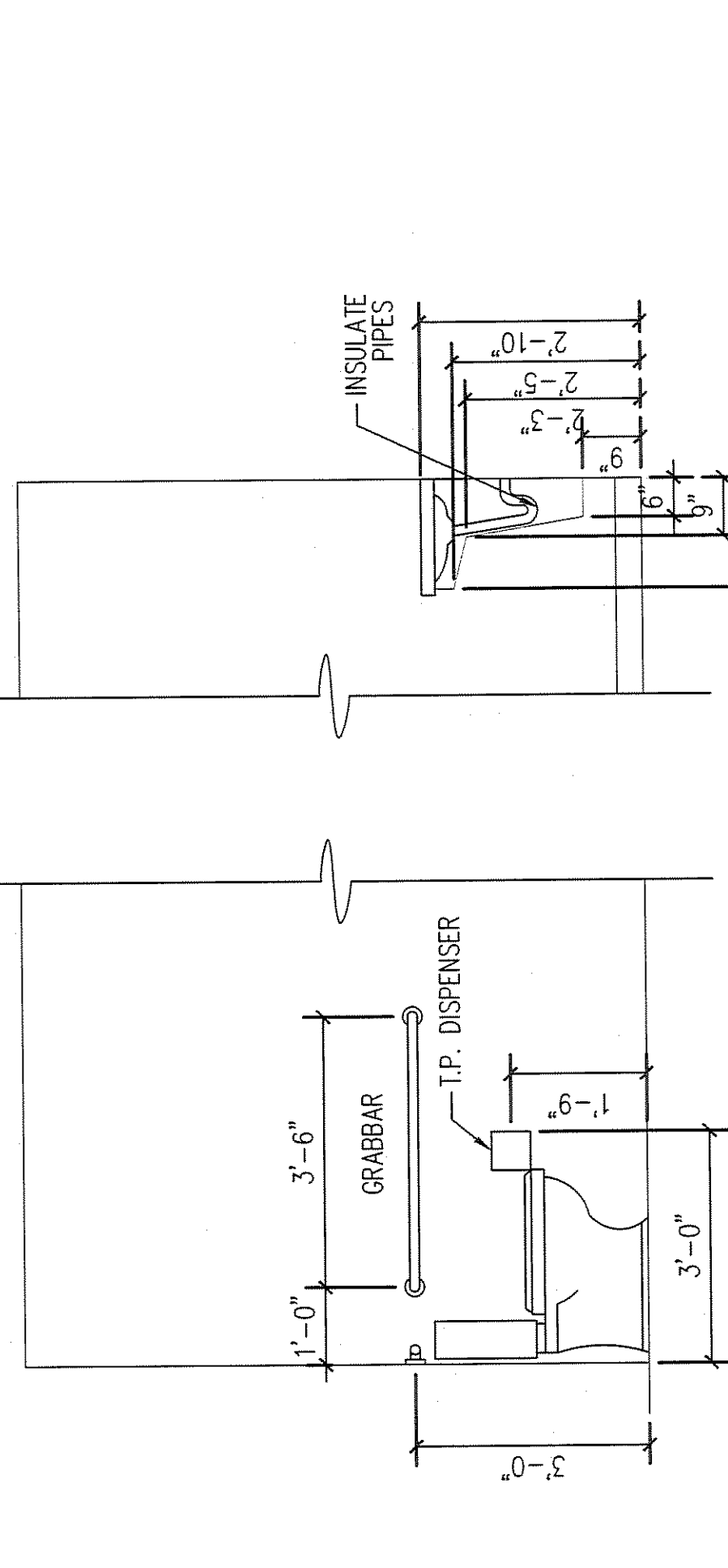
**9** KALWALL HEAD DTL. ABOVE O.H. DOOR

SCALE: 3"=1'-0"



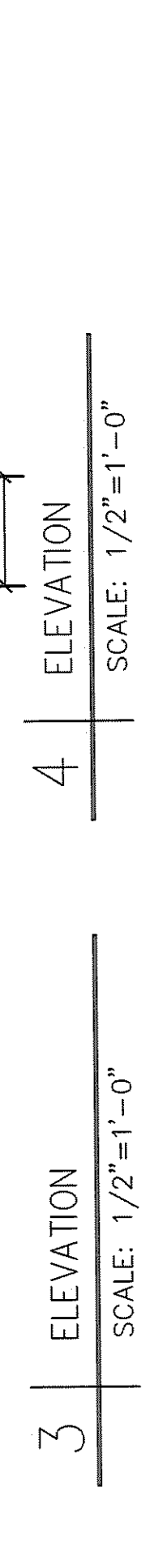
**1** BATHROOM PLAN

SCALE: 1/2"=1'-0"



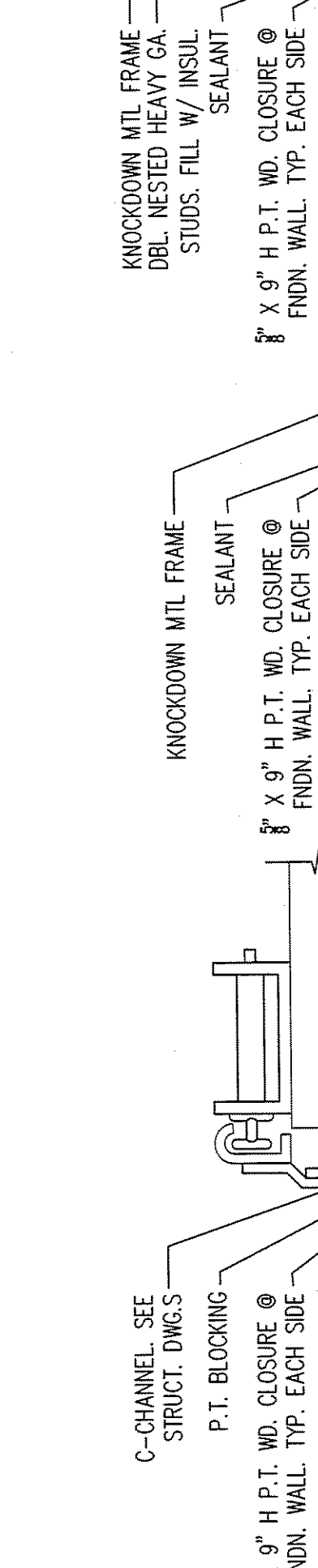
**2** ELEVATION

SCALE: 1/2"=1'-0"



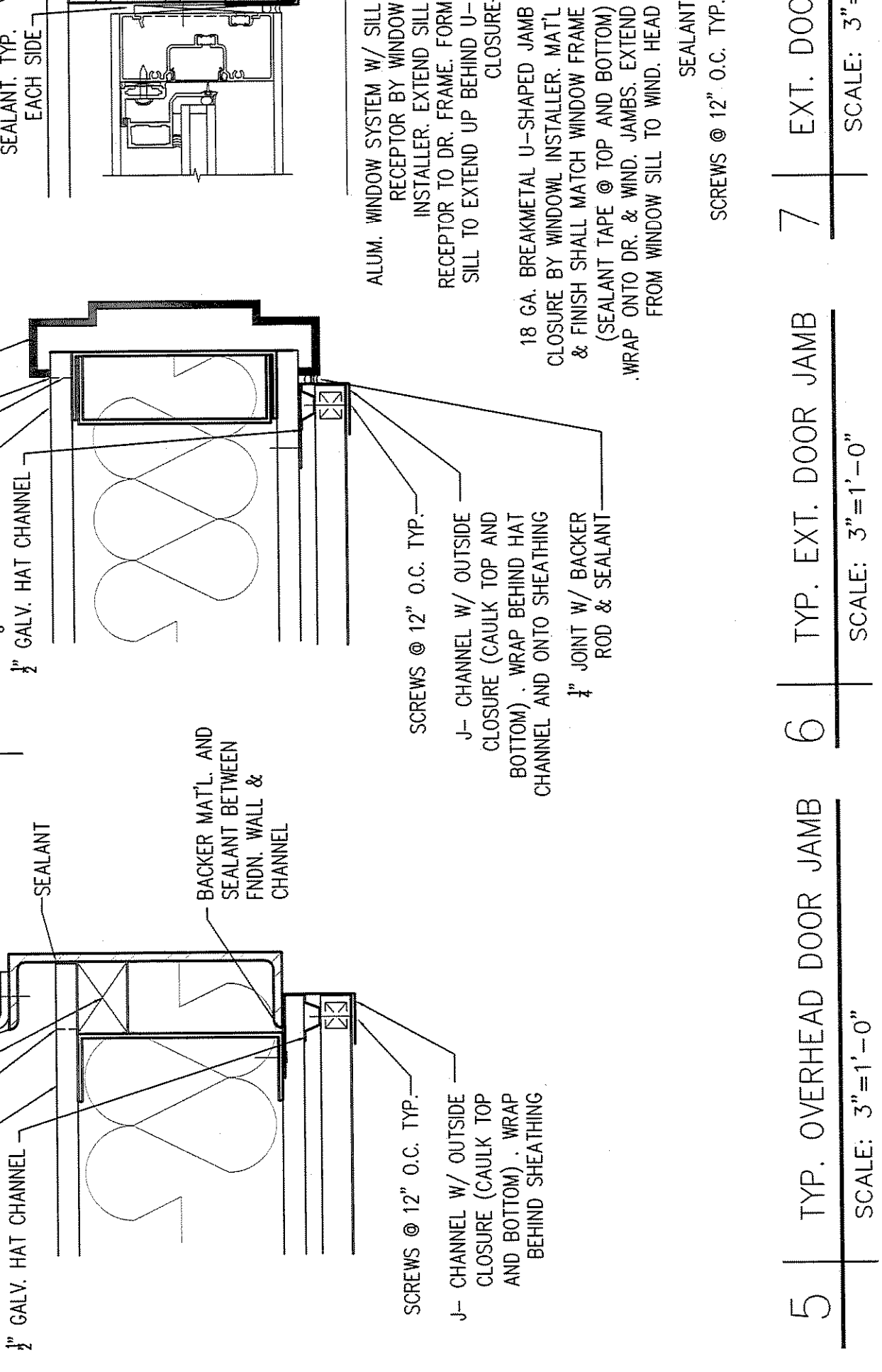
**3** ELEVATION

SCALE: 1/2"=1'-0"



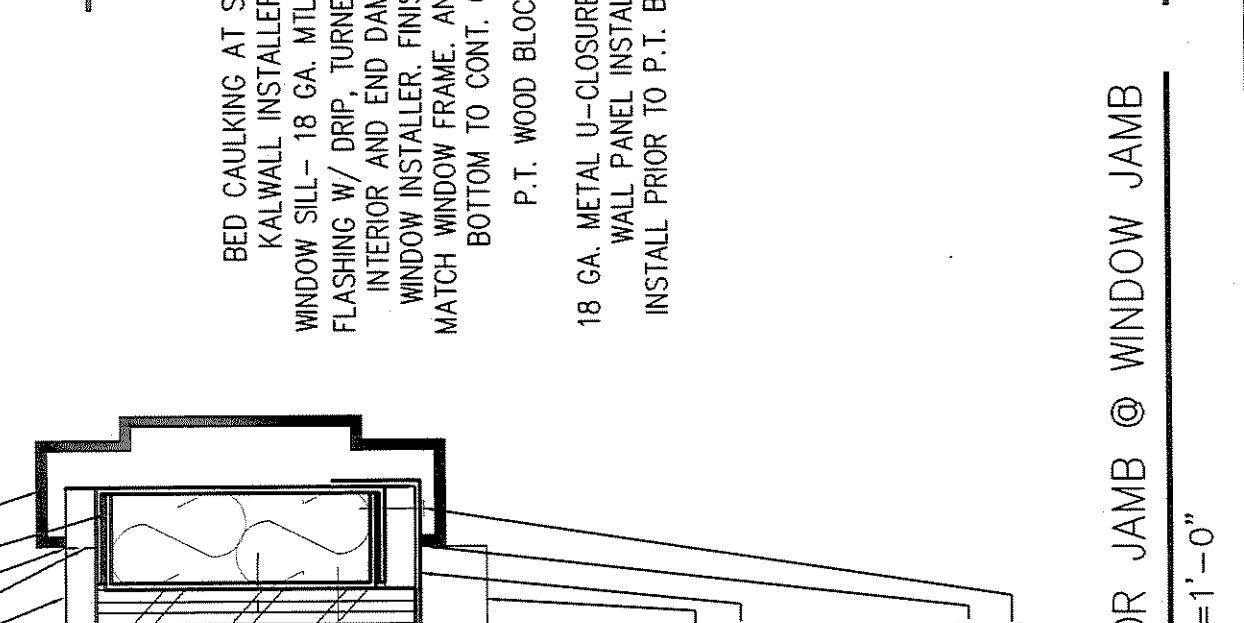
**4** ELEVATION

SCALE: 1/2"=1'-0"



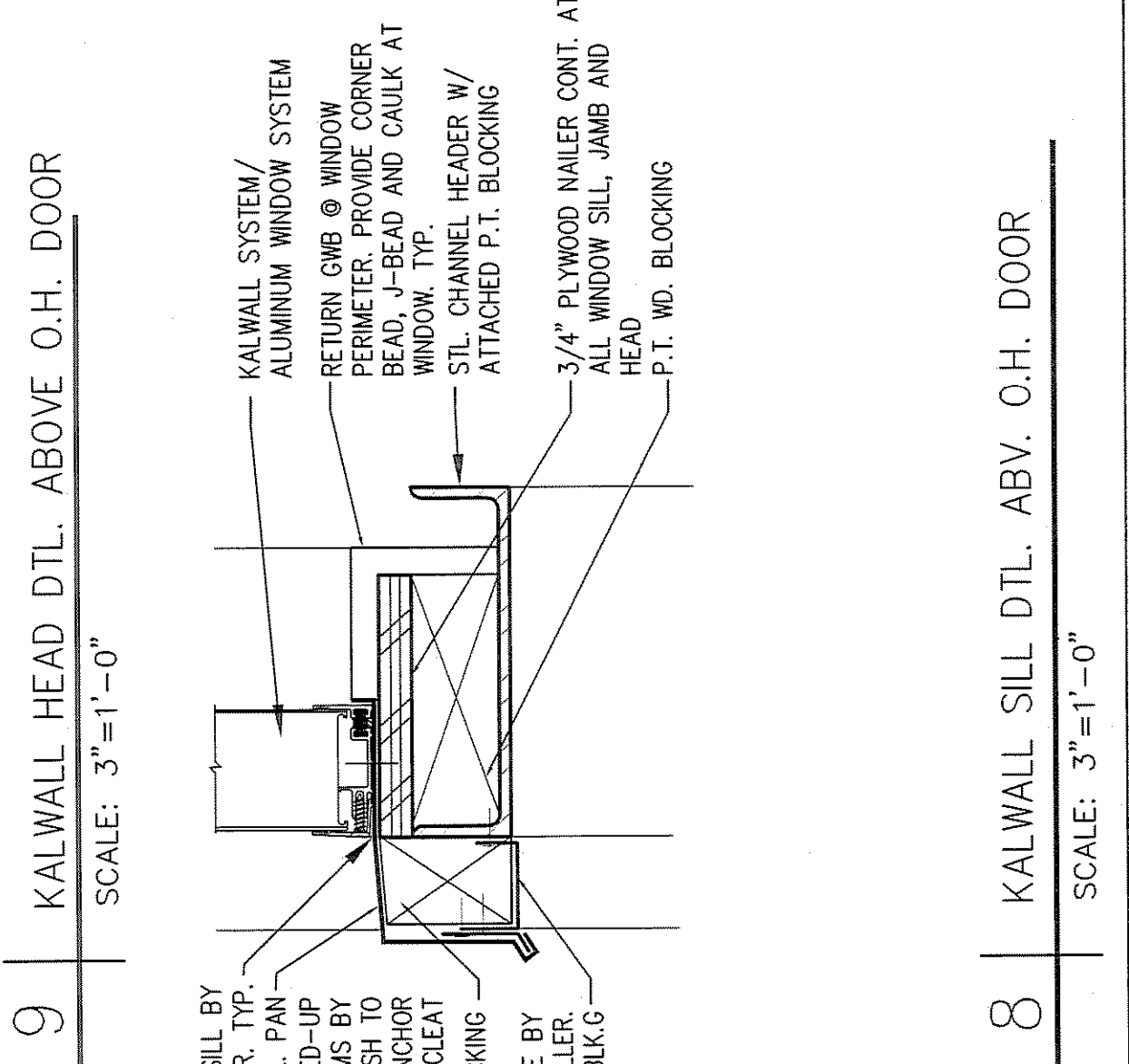
**5** TYP. OVERHEAD DOOR JAMB

SCALE: 3"=1'-0"



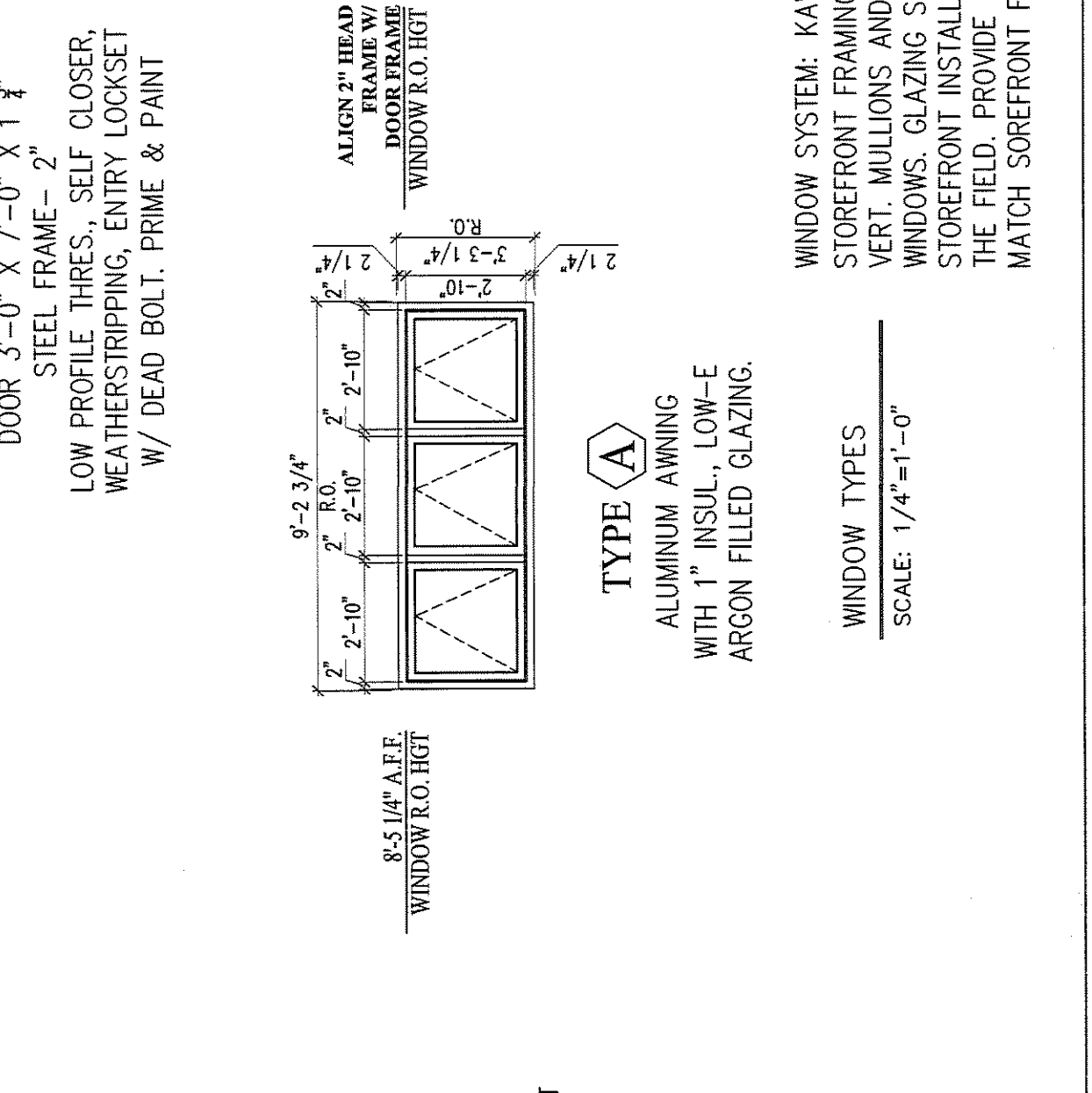
**6** TYP. EXT. DOOR JAMB

SCALE: 3"=1'-0"



**7** EXT. DOOR JAMB @ WINDOW JAMB

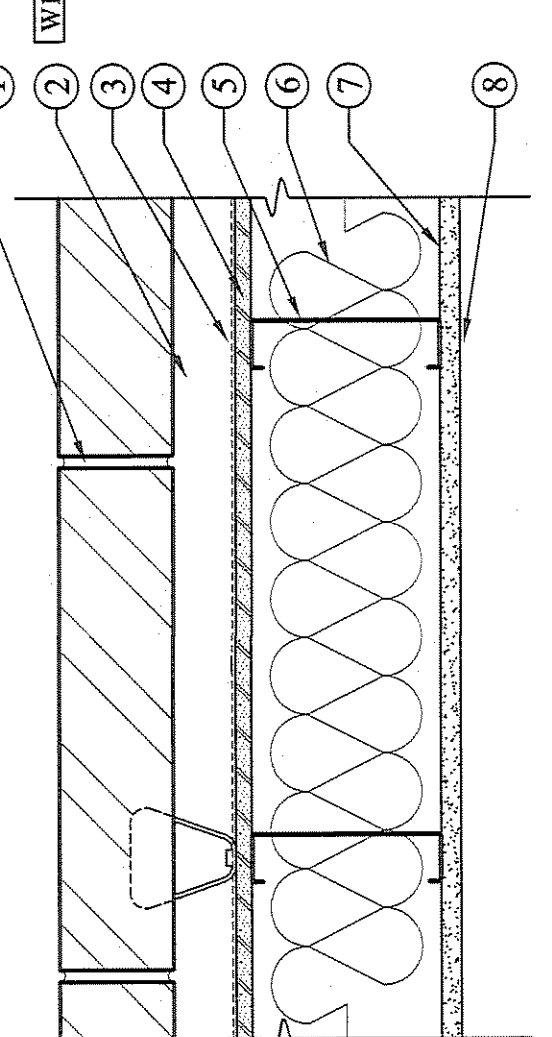
SCALE: 3"=1'-0"



**8** KALWALL SILL DTL. ABV. O.H. DOOR

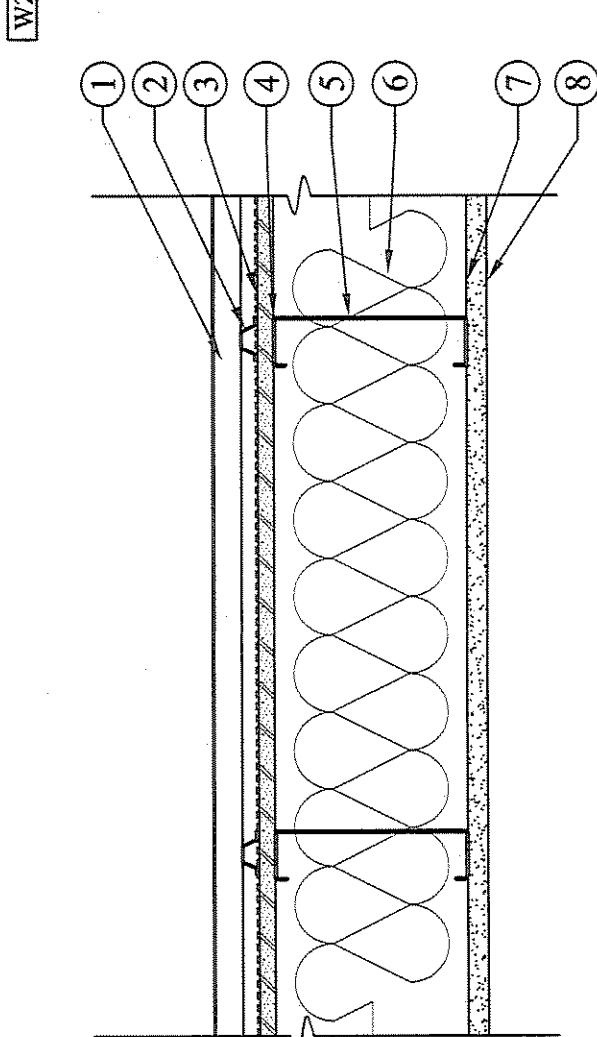
SCALE: 3"=1'-0"

# WALL TYPES



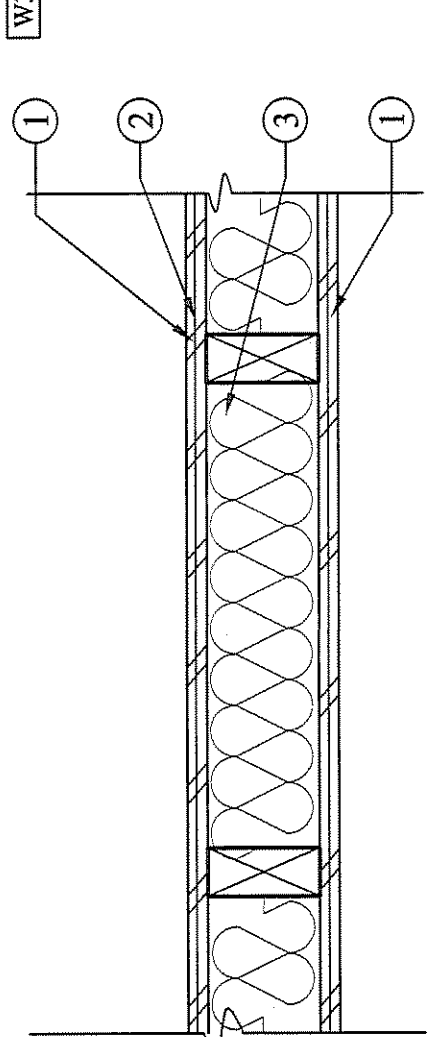
**W1** UNRATED BLOCK/BRICK MASONRY EXTERIOR WALL

- UNRATED - TYPICAL MASONRY FACE EXT. WALL**
1. Block/Brick Veneer - Nominal 4 in. wide concrete block/jumbo brick veneer fastened with stainless steel anchors spaced not more than 16 in OC vertically and max 32 in. OC horizontally.
  2. Air Space - One and three-quarter inch air space provided between block/brick veneer and sheathing.
  3. Air/Moisture Barrier - 15 lb felt. Provide continuous barrier protection over exterior sheathing.
  4. Exterior Sheathing - One layer 5/8" type X gypsum wallboard applied parallel or at right angles to wall studs with 1-5/8" Type 8 drywall screws 12" o.c.
  5. Metal Studs - Six inch metal studs at 2'-0" o.c.
  6. Insulation - 6" unfaced fiberglass batt insulation (R-19) and spray-foam polyurethane insulation (total R-19 min) at exterior walls that are outboard of steel roof beam from bottom of roof beam to top of parapet
  7. Vapor Barrier - 6 mil poly
  8. Interior Finish - 5/8" Type X gypsum wallboard from top of finish wall to 4" A.F.F. Align top around entire perimeter One layer 5/8" Type X gypsum wallboard from 4" A.F.F. to underside of roof beams/ roof deck. Painted. Provide J-bead at bottom edge.



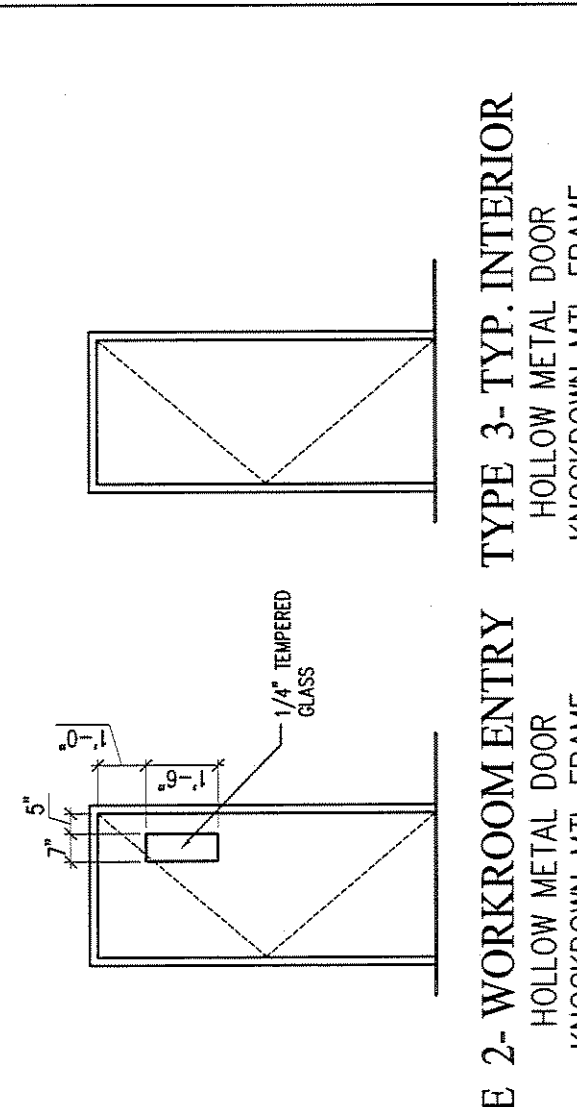
**W2** UNRATED METAL SIDING EXTERIOR WALL

- UNRATED - TYPICAL METAL SIDING WALL**
1. Siding - Horizontal concealed-fastener metal wall panels w/ mitered exterior corners.
  2. Exterior Furring - Vertical 1/2" deep galv. metal furring channels at 2'-0" o.c. and as required by siding installation. Anchor to studs. Typical.
  3. Air/Moisture Barrier - 15 lb. felt. Provide continuous barrier protection over exterior sheathing.
  4. Exterior Sheathing - One layer 5/8" type X gypsum wallboard applied parallel or at right angles to wall studs with 1-5/8" Type 8 drywall screws 12" o.c.
  5. Metal Studs - Six inch metal studs at 2'-0" o.c.
  6. Insulation - 6" unfaced fiberglass batt insulation (R-19) and spray-foam polyurethane insulation (total R-19 min) at exterior walls that are outboard of steel roof beam from bottom of roof beam to top of parapet
  7. Vapor Barrier - 6 mil poly
  8. Interior Finish - 5/8" Type X gypsum wallboard from top of finish wall to 4" A.F.F. Align top around entire perimeter One layer 5/8" Type X gypsum wallboard from 4" A.F.F. to underside of roof beams/ roof deck. Painted. Provide J-bead at bottom edge.



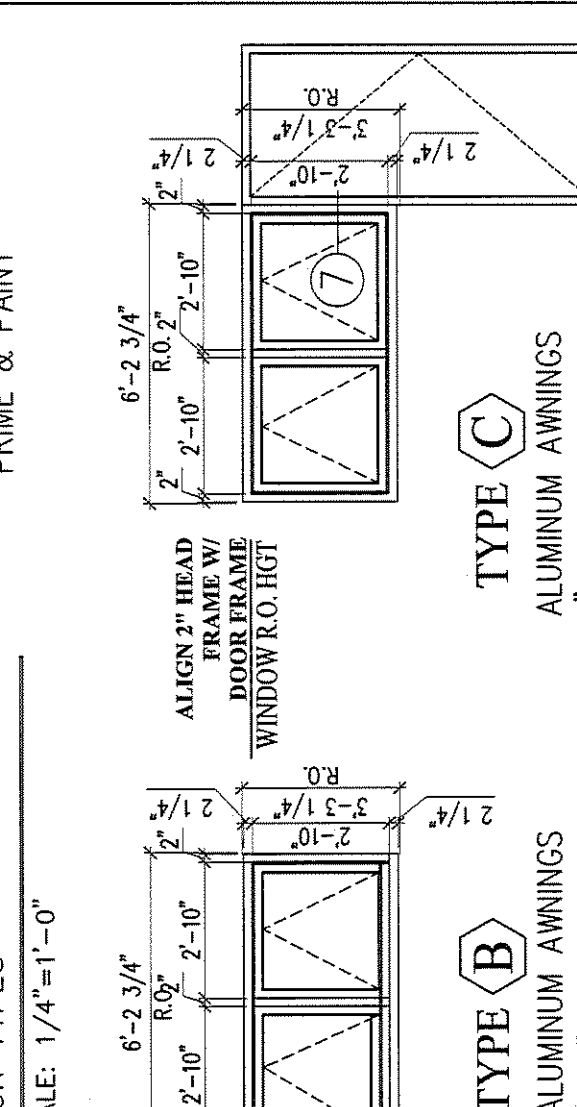
**W3** UNRATED INTERIOR LOAD BEARING WALL

- UNRATED - LOAD-BEARING INTERIOR WALL ASSEMBLY**
1. Wall Finish - One layer 1/2" plywood sheathing each side from 1/2" above slab to underside of ceiling structure or top edge of Mezzanine floor. Provide 1/2" painted gwb at interior of restroom.
  2. Wood Studs - 2 x 4 wood studs @ 16" o.c. Provide p.l. bottom plate
  3. Insulation - 3 1/2" Fiberglass batt insulation friction fit in stud space.



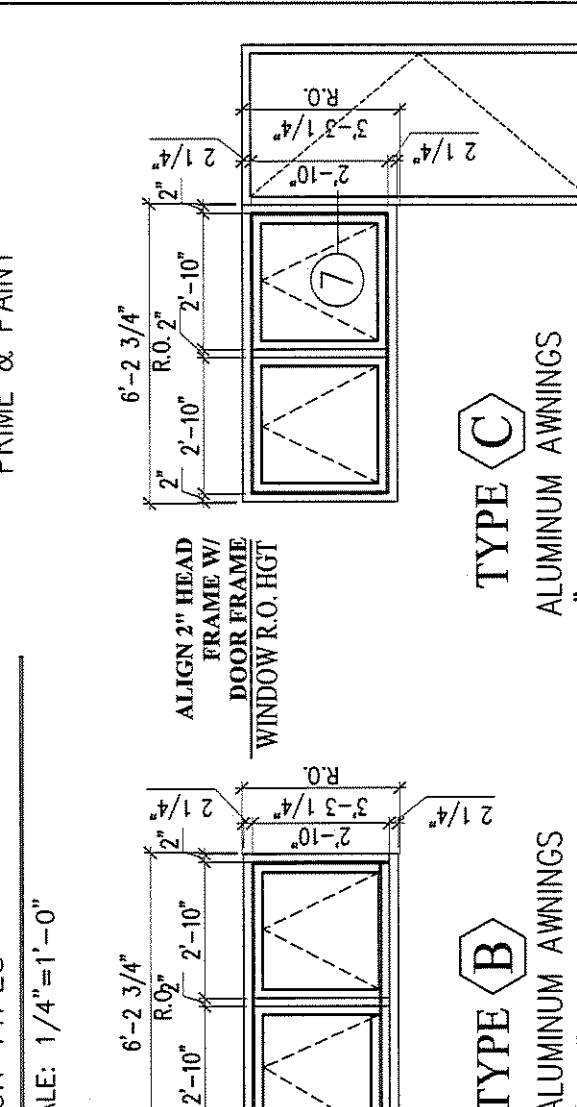
**TYPE 1 - EXTERIOR**

- TYPE 1 - EXTERIOR**  
METAL INSULATED DOOR  
KNOCKDOWN MTL FRAME  
DOOR 3'-0" X 7'-0" X 1 3/4"  
STEEL FRAME - 2"  
LOW PROFILE THRES., SELF CLOSER,  
WEATHERSTRIPPING, ENTRY LOCKSET  
W/ DEAD BOLT, PRIME & PAINT



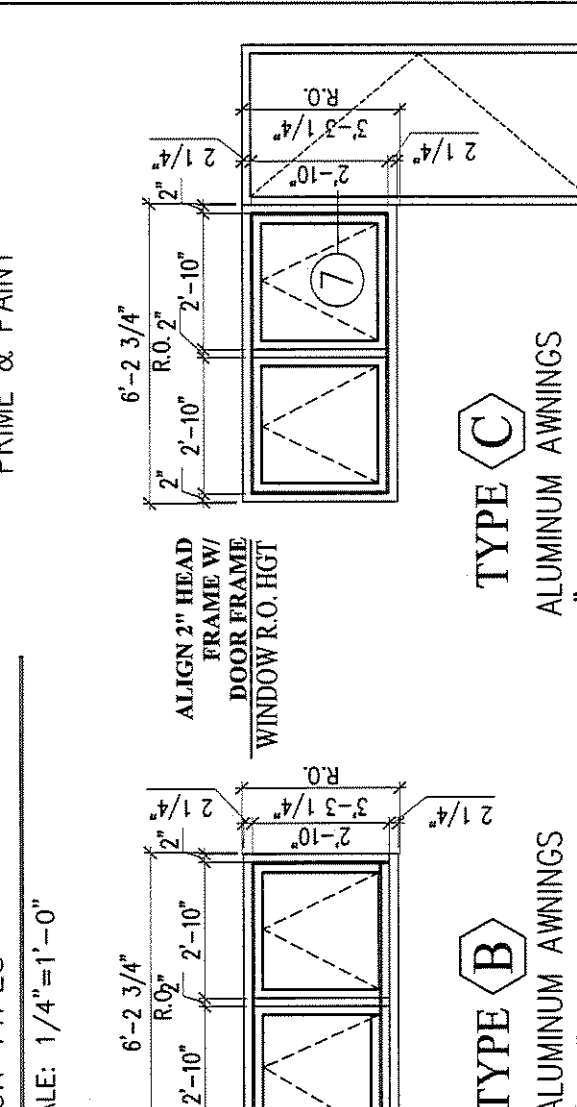
**TYPE 2 - WORKROOM ENTRY**

- TYPE 2 - WORKROOM ENTRY**  
HOLLOW METAL DOOR  
KNOCKDOWN MTL FRAME  
DOOR 3'-0" X 7'-0" X 1 3/4"  
STEEL FRAME - 2"  
STORE ROOM LOCKSET  
PRIME & PAINT



**TYPE 3 - TYP. INTERIOR**

- TYPE 3 - TYP. INTERIOR**  
HOLLOW METAL DOOR  
KNOCKDOWN MTL FRAME  
DOOR 3'-0" X 7'-0" X 1 3/4"  
STEEL FRAME - 2"  
STORE ROOM LOCKSET @  
STORAGE ROOM, PRIVACY  
LOCKSET @ RESTROOM,  
PRIME & PAINT



**TYPE A**

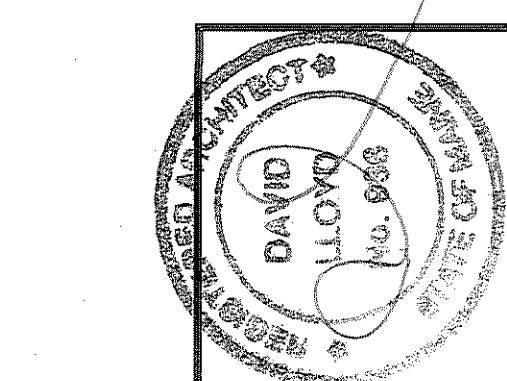
- TYPE A**  
ALUMINUM AWNING  
WITH 1" INSUL., LOW-E  
ARGON FILLED GLAZING.

**TYPE B**

- TYPE B**  
ALUMINUM AWNINGS  
WITH 1" INSUL., LOW-E  
ARGON FILLED GLAZING.

**TYPE C**

- TYPE C**  
ALUMINUM AWNINGS  
WITH 1" INSUL., LOW-E  
ARGON FILLED GLAZING.



OWNER:  
**PROPSYS, INC.**  
55 LISBON STREET SUITE 2400  
LEWISTON, MAINE

ARCHITECTS:  
**ARCHTYPE, P.A.**  
48 Union Wharf Portland, Maine 04101  
(207) 772-6022 Fax (207) 772-4056

501 DANFORTH STREET  
PORTLAND, MAINE

Project:  
Revisions:  
03/24/10 PRELIM. PRICING SET  
4/27/10 BID DOCUMENT SET

Scale  
AS NOTED  
APRIL 27, 2010  
BATHROOM ELEVATIONS  
AND  
WINDOW & DOOR SCHEDULES

A4