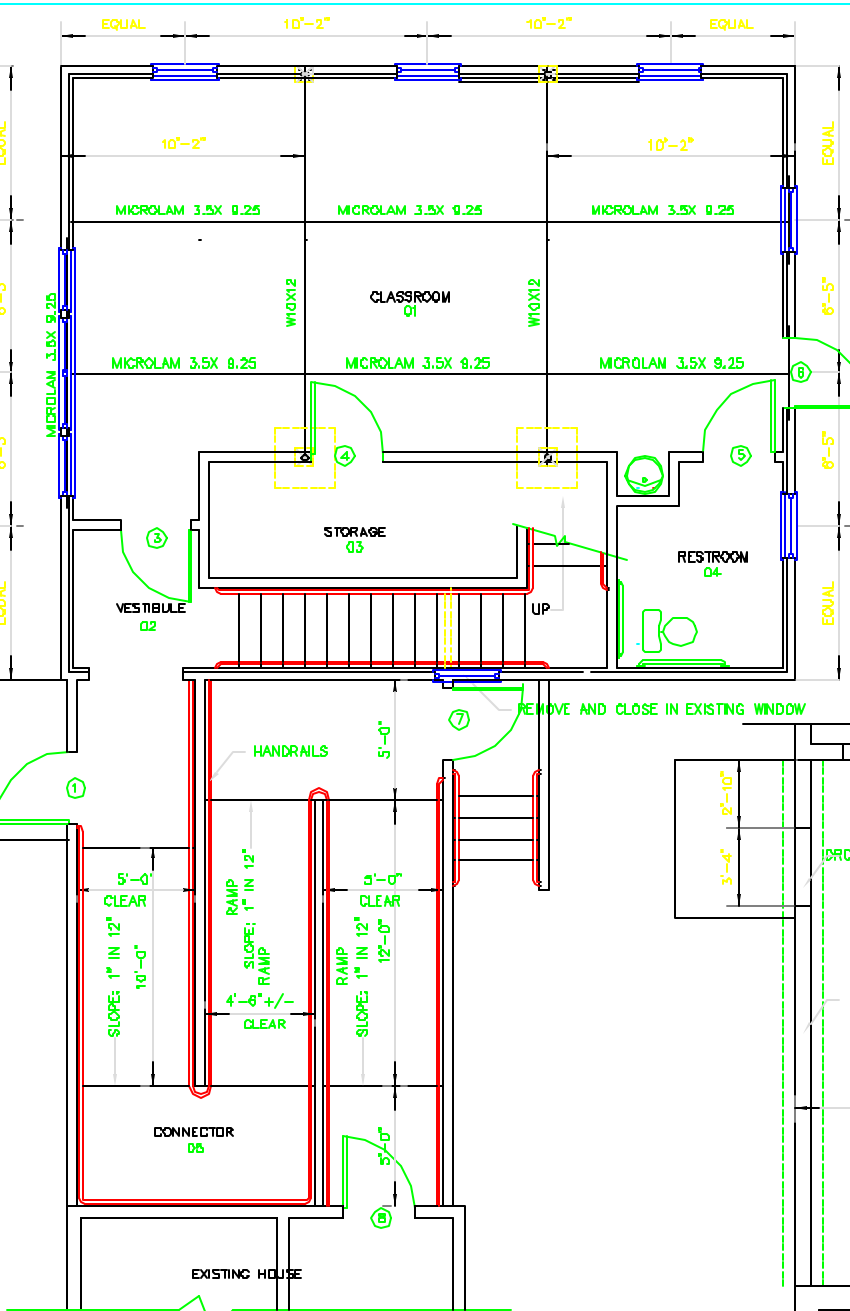
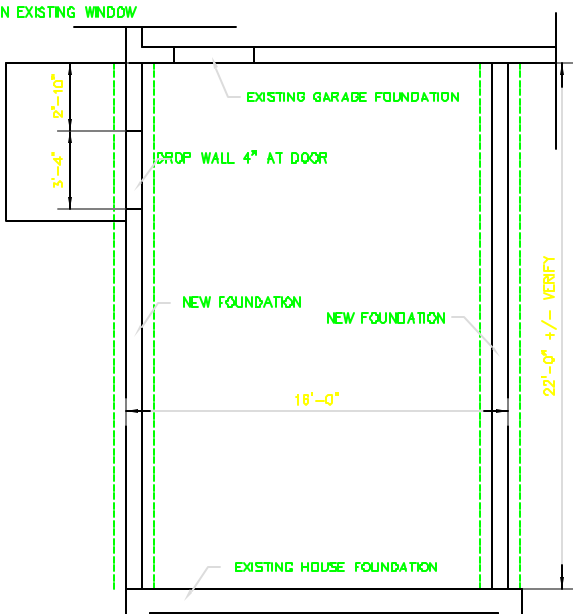


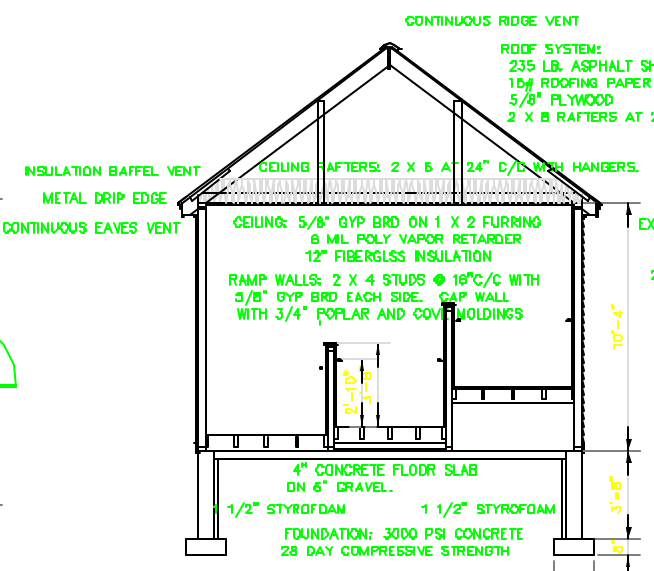
1) SECOND FLOOR PLAN - 1/4" = 1'-0"



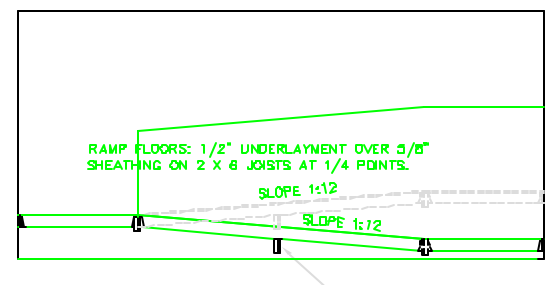
1) 4.1 FIRST FLOOR PLAN - 1/4" = 1'-0"



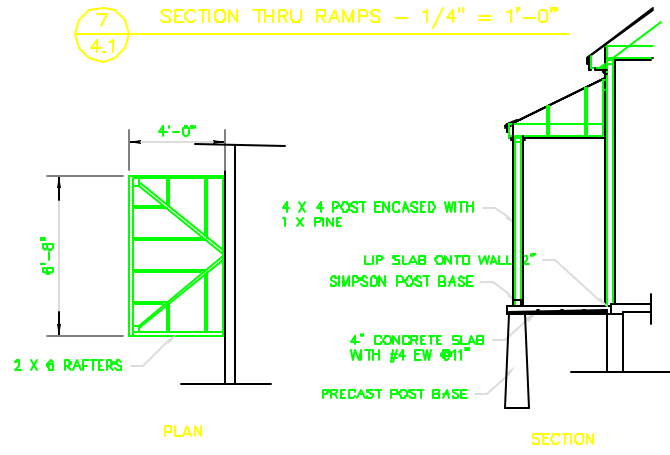
3) 4.1 FOUNDATION PLAN - 1/4" = 1'-0"



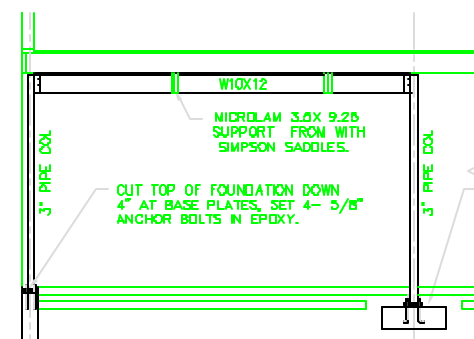
4) 4.1 SECTION THRU CONNECTOR - 1/4" = 1'-0"



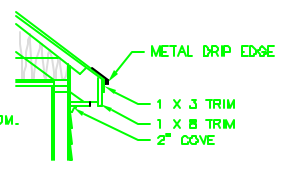
7) 4.1 SECTION THRU RAMPS - 1/4" = 1'-0"



8) 4.1 CANOPY DETAIL - 1/4" = 1'-0"



CUT TOP OF FOUNDATION DOWN 4" AT BASE PLATES, SET 4 - 5/8" ANCHOR BOLTS IN EPOXY.



5) 4.1 EAVES DETAIL - 1" = 1'-0"

WILLIAM E. WHITED, INC.  
ARCHITECT / ENGINEER

300 TOWNSEND AVENUE, PORTLAND, MAINE  
TEL: (207) 875-4884 FAX: (207) 878-4830

CONSTRUCTION FROM THIS DRAWING IS AUTHORIZED ONLY  
PRICE SERIES BY RESPONSIBLE ENGINEER OR ARCHITECT

RENOVATIONS TO THE  
CHILDRENS CENTER  
STEVENS AVENUE, PORTLAND, MAINE



DATE	DESCRIPTION
02-20-01	FIRE MARSHAL REVISIONS
12-14-00	FOR BIDDING
11-28-00	FOR REVIEW

PROJECT NO.	
DATE	08.31.00
PLDT SCALE	1:48
QAD FILE	
BY	JEB
CHECKED BY	