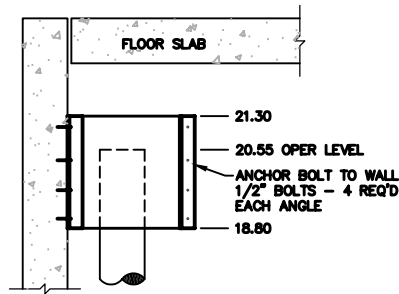


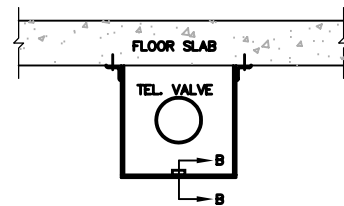
PLAN VIEW



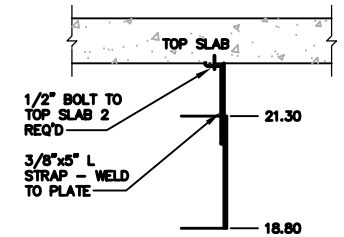
SECTION A-A

TYPICAL CORNER BAFFLE

NOTE:  
ALL MATERIAL  
STAINLESS STEEL

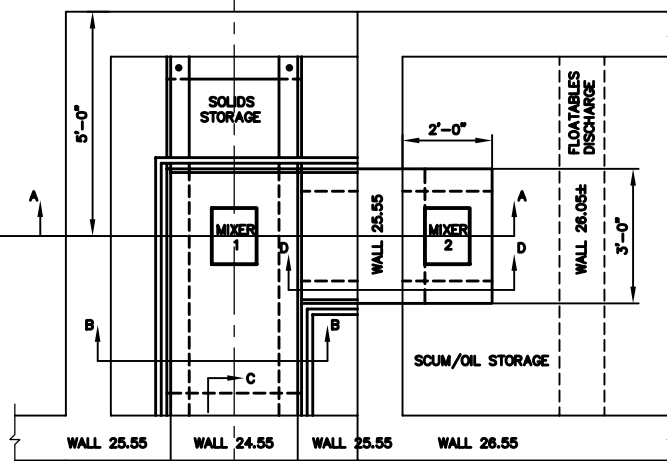


PLAN VIEW

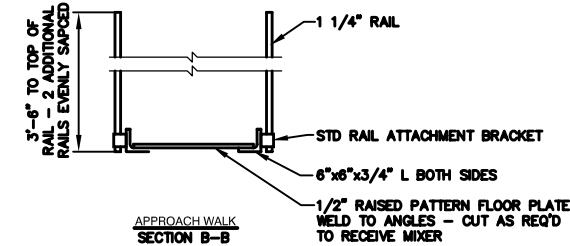


SECTION B-B

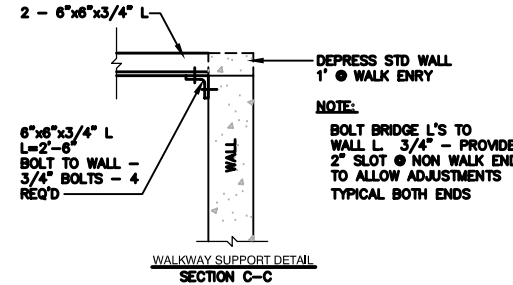
TYPICAL SIDEWALL BAFFLE



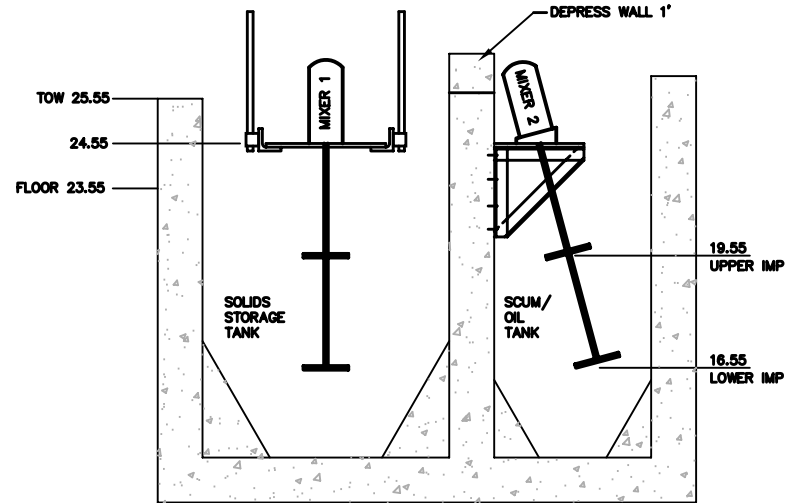
MIXER ACCESS



APPROACH WALK  
SECTION B-B



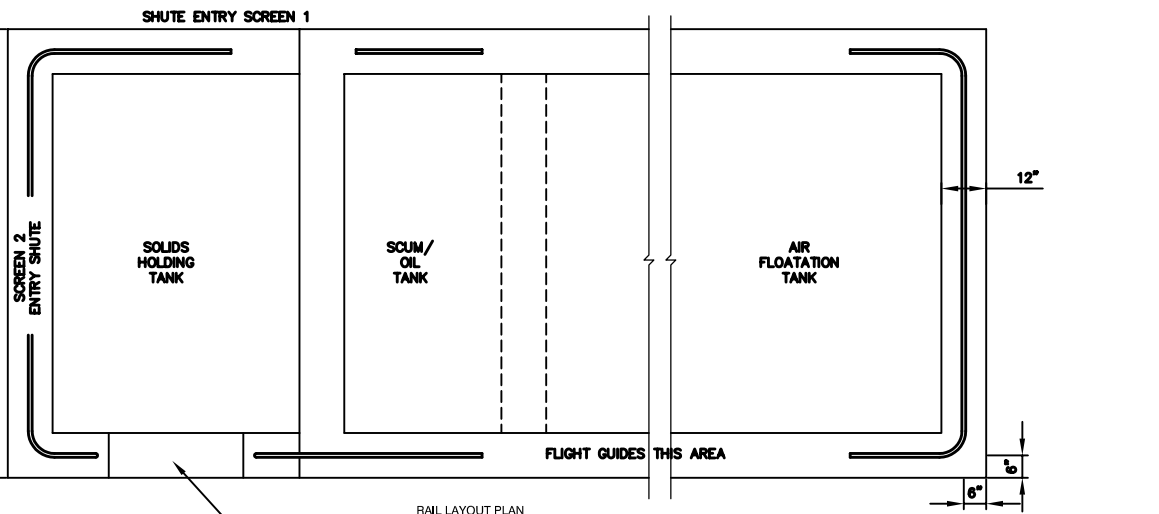
WALKWAY SUPPORT DETAIL  
SECTION C-C



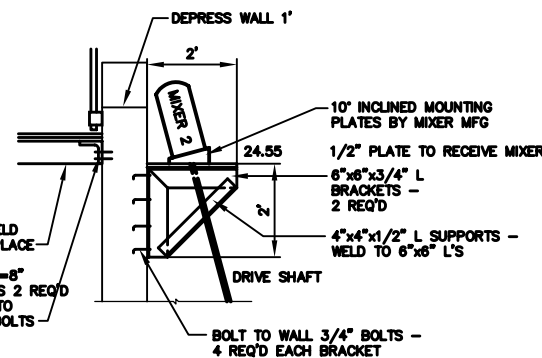
MIXER INSTALLATIONS  
SECTION A-A

TELESCOPING VALVE SCUM BAFFLES  
NOT TO SCALE

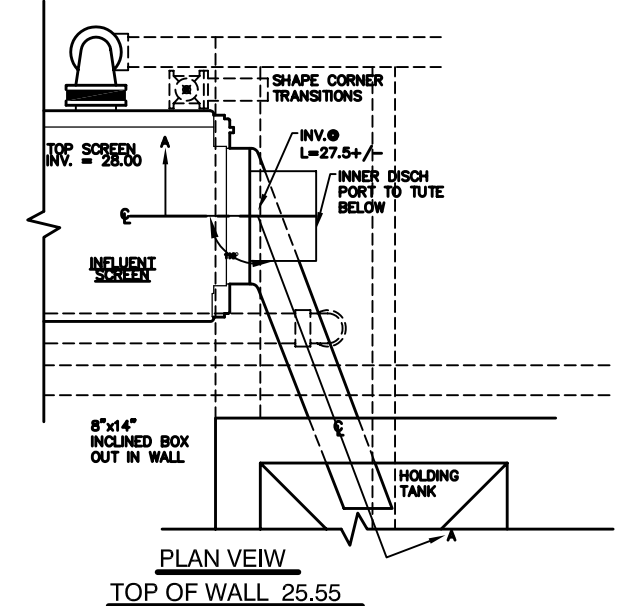
MIXER DETAILS  
NOT TO SCALE



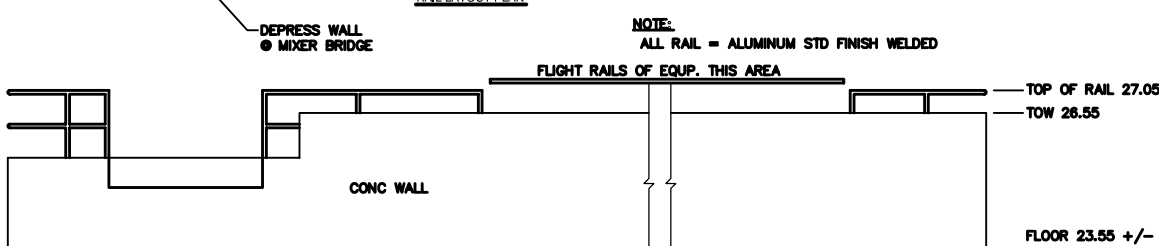
SHUTE ENTRY SCREEN 1



MIXER 2 SUPPORT  
SECTION D-D

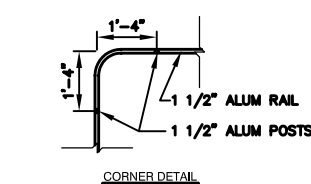


SHUTE DETAILS-INFLUENT SCREEN  
1/2\"/>

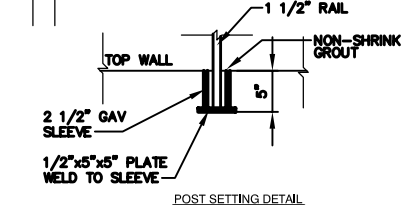


RAIL LAYOUT PLAN

NOTE:  
ALL RAIL = ALUMINUM STD FINISH WELDED

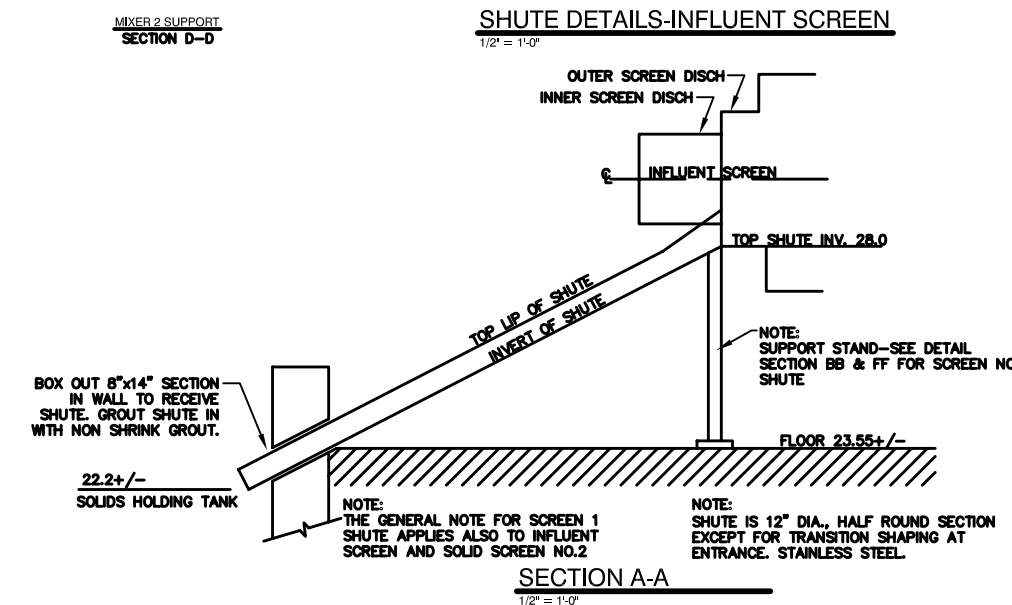


CORNER DETAIL



POST SETTING DETAIL

SAFETY RAIL DETAILS  
NOT TO SCALE



SECTION A-A  
1/2\"/>

C	RCL	12/19/02	ISSUED FOR: BIDS	760_c_P-114
B	RCL	12/12/02	ISSUED FOR: CLIENT REVIEW	760_b_P-114
REV.	BY	DATE	STATUS	CAD NO.

THIS ELECTRONIC FILE IS THE PROPERTY OF ENVIRONMENTAL ENGINEERING & REMEDIATION, INC. AND IS TO BE USED ONLY FOR THE SPECIFIC PROJECT IDENTIFIED ON THE DRAWING. NO REVISIONS OR COPIES, IN PART OR WHOLE, SHALL BE MADE WITHOUT THE EXPRESSED WRITTEN CONSENT OF ENVIRONMENTAL ENGINEERING & REMEDIATION, INC. ANY ALTERATIONS, AUTHORIZED OR OTHERWISE, SHALL BE AT THE USER'S RISK AND WITHOUT LIABILITY TO ENVIRONMENTAL ENGINEERING & REMEDIATION, INC.

BARBER FOODS  
WASTEWATER PRETREATMENT FACILITY

MISCELLANEOUS  
DETAILS NO. 3

**EER** Environmental  
Engineering &  
Remediation, Inc.  
222 St. John Street, Suite 714 Portland, Maine 04102

DESIGN BY:	RCL
DRAWN BY:	JWR
CHECKED BY:	SJD
DATE:	10-28-02
JOB NO:	700
SCALE:	AS NOTED
P-113	
SHEET	44 OF 48