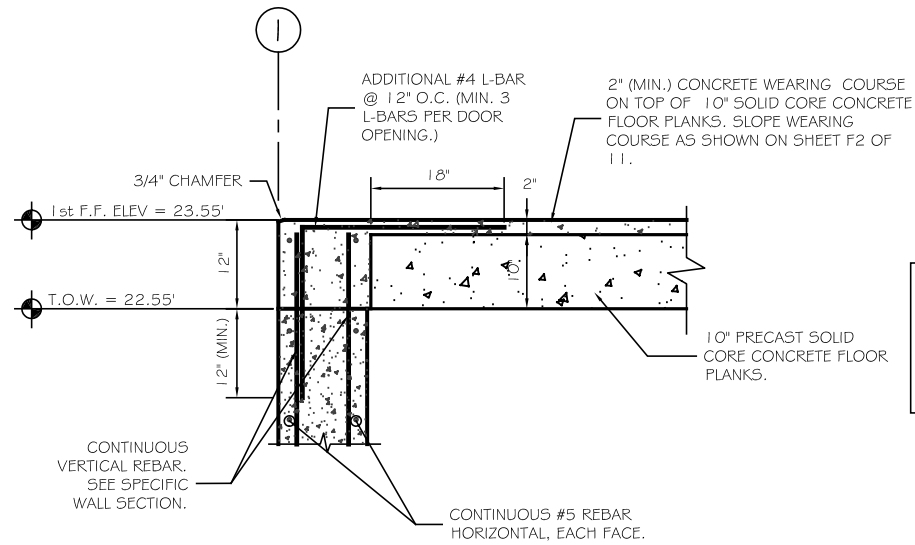
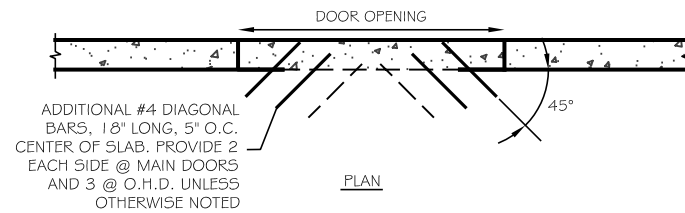


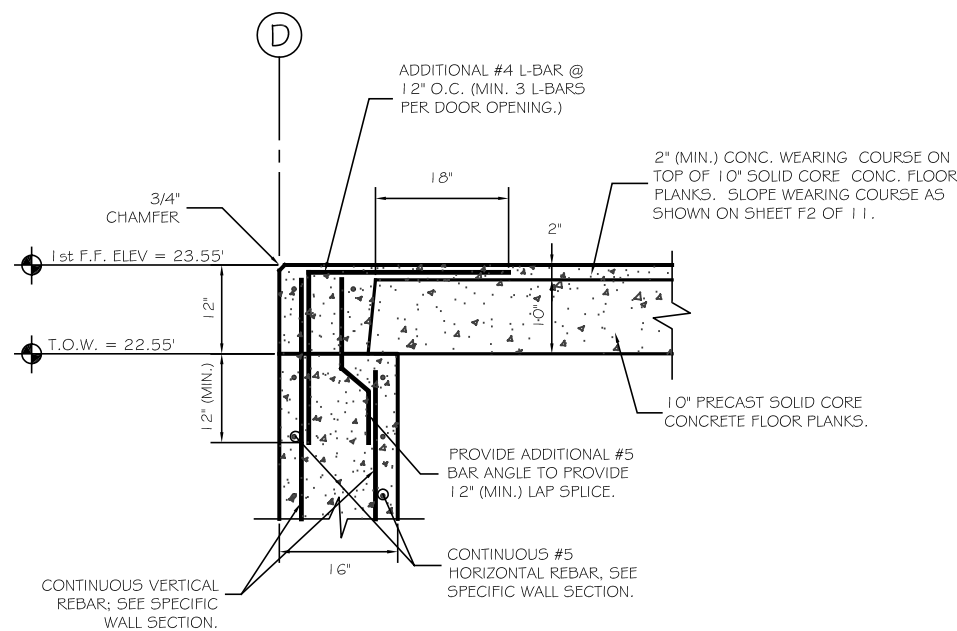
BRACED EXCAVATION: CONTRACTOR IS RESPONSIBLE FOR THE BRACED EXCAVATION DESIGN. BRACED EXCAVATION IS TO BE DESIGNED AND DETAILED BY A PROFESSIONAL ENGINEER REGISTERED IN THE STATE OF MAINE. PROVIDE SUBMITTAL WITH DRAWINGS AND WRITTEN DESCRIPTION, SHOWING MATERIALS, METHODS, SCHEDULE AND EQUIPMENT TO BE USED FOR BRACED EXCAVATION.

DESIGN ENGINEER SHALL CARRY \$2.0 MILLION IN ERRORS & OMISSIONS INSURANCE, AND SHOULD PROVIDE INSURANCE CERTIFICATE WITH DESIGN SUBMITTAL. RESPONSIBLE DESIGN ENGINEER IS ALSO REQUIRED TO CONDUCT PERIODIC SITE VISITS AND CONDUCT A PRE-CONSTRUCTION MEETING TO REVIEW BRACED EXCAVATION PROCEDURES.

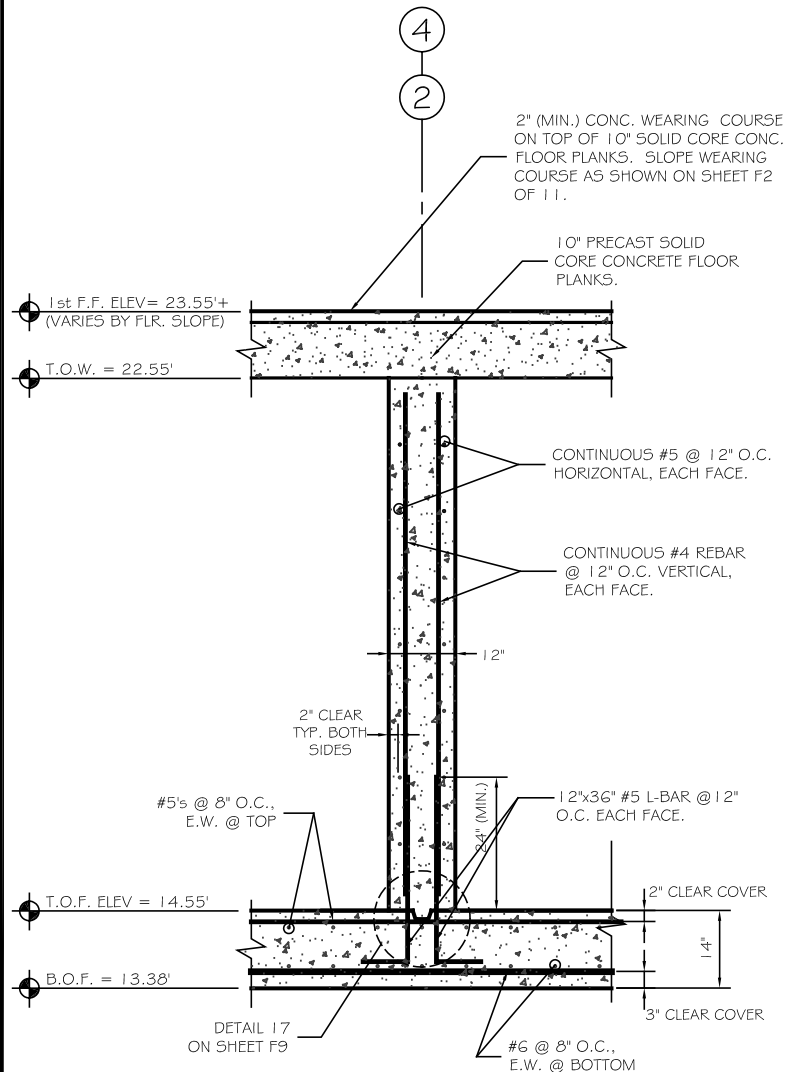
RECOMMENDATIONS & REQUIREMENTS FOR BRACED EXCAVATIONS ARE INCLUDED IN THE GEOTECHNICAL REPORT PROVIDED BY S.W. COLE, INC. DATED DECEMBER 13, 2002. SEE PROJECT SPECIFICATIONS FOR COPY OF THIS REPORT.



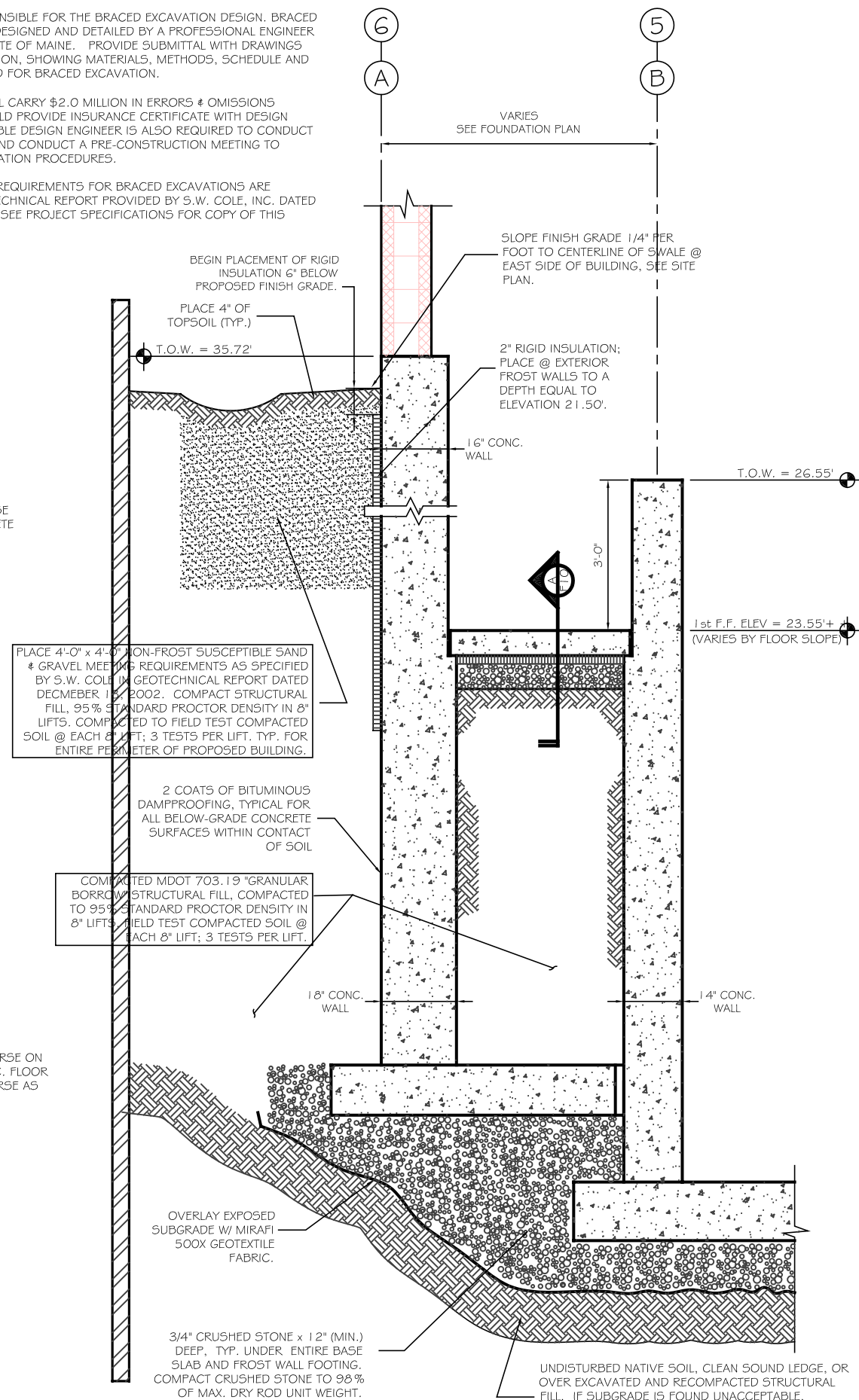
10a TYP. SLAB DETAIL @ MAN DOOR  
SCALE: 1" = 1'-0"



10b TYP. SLAB DETAIL @ OVERHEAD DOOR  
SCALE: 1" = 1'-0"



9 TYP. WALL SECTION @ 12" INTERIOR WALL  
SCALE: 3/4" = 1'-0"



11 TYPICAL EARTHWORK SECTION  
SCALE: N.T.S.

**ASSOCIATED DESIGN PARTNERS INC.**  
Office: (207) 878-1751  
Fax: (207) 878-1788  
E-Mail: [ahp@maine.net](mailto:ahp@maine.net)  
80 Leighton Road  
Falmouth, Maine 04105

THIS DRAWING, DESIGN AND ELECTRONIC FILE ARE THE PROPERTY OF ASSOCIATED DESIGN PARTNERS, INC. THE REPRODUCTION, COPYING OR ANY OTHER USE OF THIS DOCUMENT WITHOUT WRITTEN CONSENT IS PROHIBITED.

PROJECT: **WSTWTR. PRETREATMENT BLDG.**  
FOR: BARBER FOODS, INC.  
PORTLAND, MAINE  
SHEET TITLE: **WALL SECTIONS 9, 10 & 11**

NO.	DATE	REVISIONS	DESCRIPTION

DATE: 12/31/02  
SCALE: AS NOTED  
DESIGN BY: JAT  
DRAWN BY: MGK  
FILE No. 02005.S1.dwg  
PROJECT NUMBER: **02005**  
SHEET: OF **F8 11**