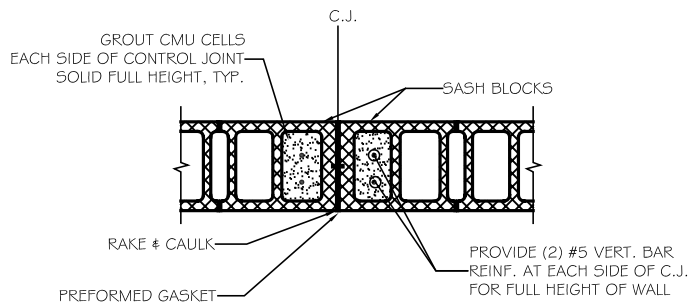
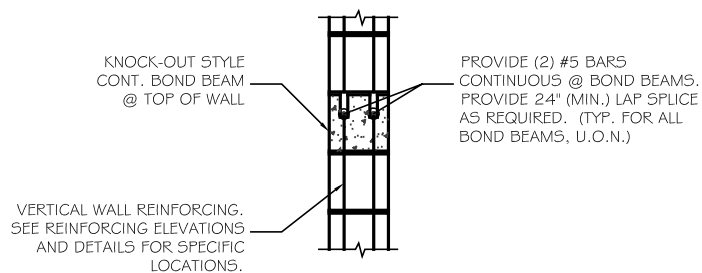


**TYP. 1 1/2" MASONRY WALL REINFORCING DETAIL**  
SCALE: 1" = 1'-0"

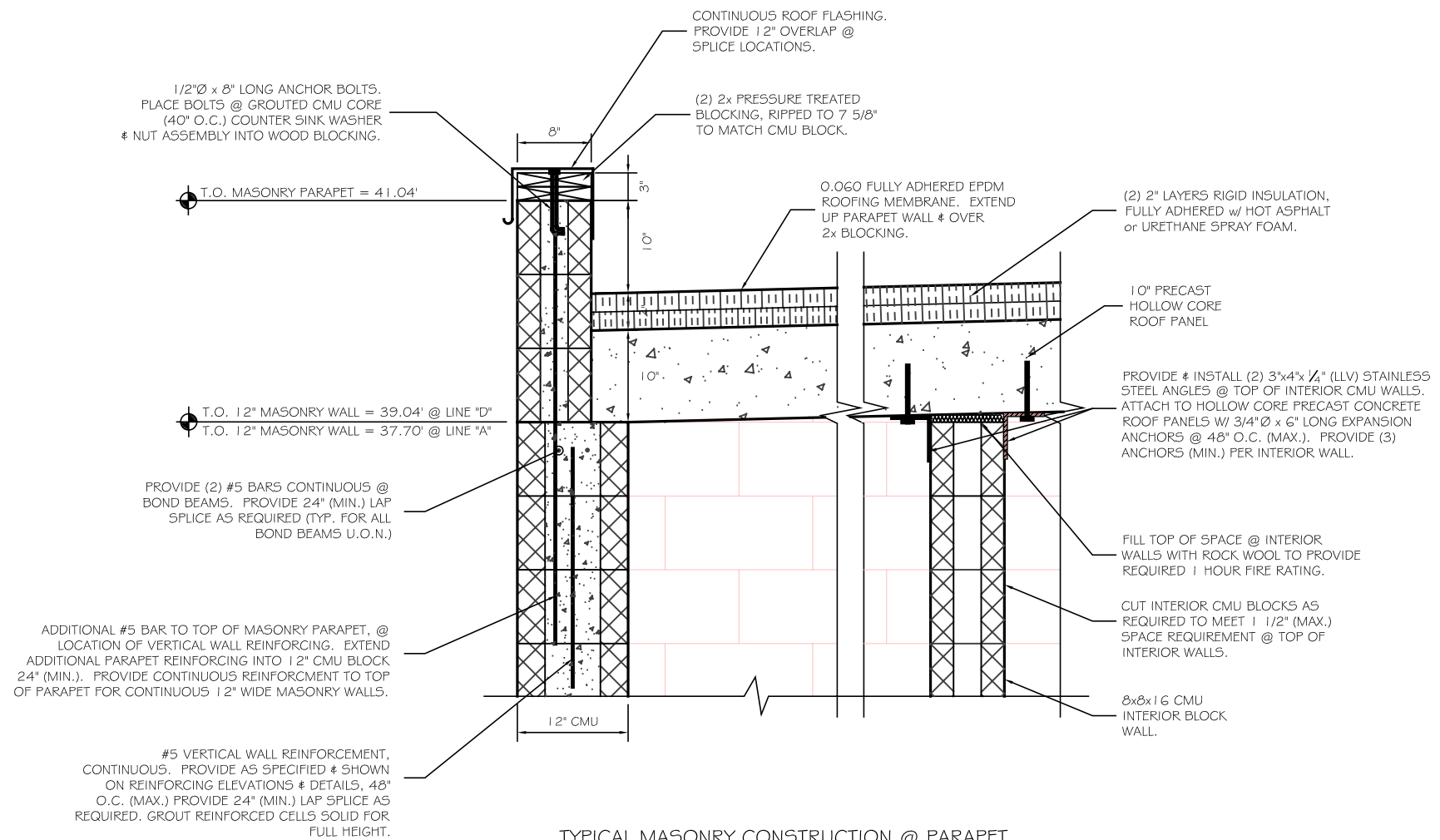


**SECTION @ TYP. CONTROL JOINT**  
SCALE: 1" = 1'-0"

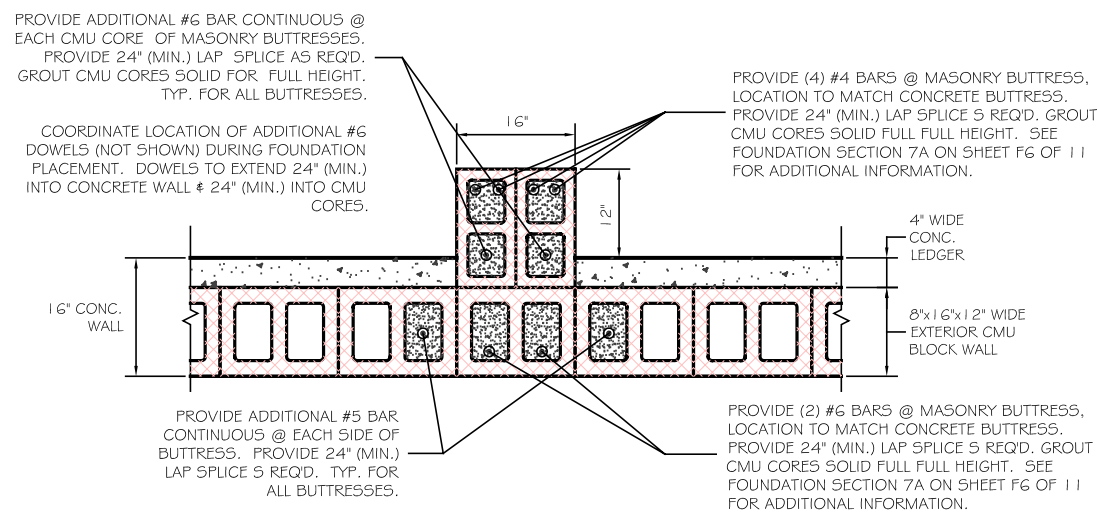


**TYP. STEEL BEAM LINTEL**  
SCALE: 1" = 1'-0"

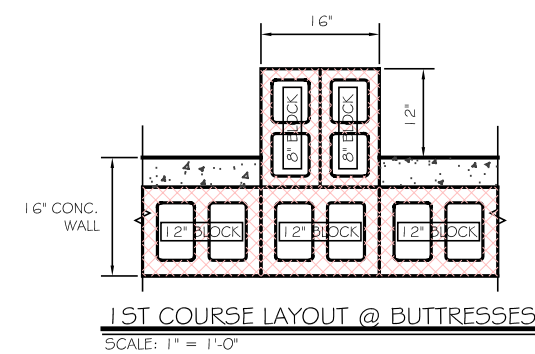
- NOTES:**
1. HORIZONTAL JOINT REINF. TO BE CONT. THROUGH CONTROL JOINT.
  2. DISCONTINUE BOND BEAMS AT CONTROL JOINT.
  3. RUN REBAR THROUGH BOND BEAMS WITH GREASED PIPE SLEEVE 1'-0".



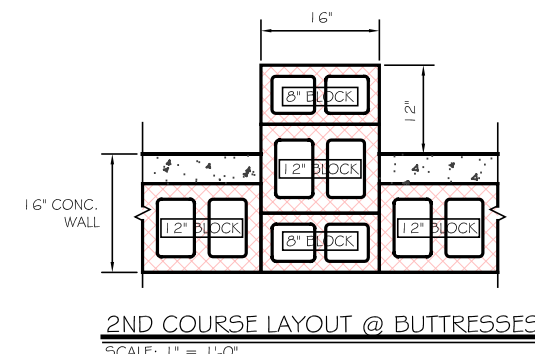
**TYPICAL MASONRY CONSTRUCTION @ PARAPET & INTERIOR MASONRY ATTACHMENT**  
SCALE: 1 1/2" = 1'-0"



**TYPICAL MASONRY DETAIL @ BUTTRESSES**  
SCALE: 1" = 1'-0"



**1ST COURSE LAYOUT @ BUTTRESSES**  
SCALE: 1" = 1'-0"



**2ND COURSE LAYOUT @ BUTTRESSES**  
SCALE: 1" = 1'-0"

**ASSOCIATED DESIGN PARTNERS INC.**  
Office: (207) 878-1751  
Fax: (207) 878-1788  
E-Mail: [ahp@maine.net](mailto:ahp@maine.net)  
80 Leighton Road  
Falmouth, Maine 04105

THIS DRAWING, DESIGN AND ELECTRONIC FILE ARE THE PROPERTY OF ASSOCIATED DESIGN PARTNERS, INC. THE REPRODUCTION, COPYING OR ANY OTHER USE OF THIS DOCUMENT WITHOUT WRITTEN CONSENT IS PROHIBITED.

**WSTWTR, PRETREATMENT BLDG.**  
FOR BARBER FOODS, INC.  
PORTLAND, MAINE

**CMU DETAILS**

PROJECT: WSTWTR, PRETREATMENT BLDG.  
SHEET TITLE: CMU DETAILS

NO.	REVISIONS	DATE

DATE: 12/31/02  
SCALE: AS NOTED  
DESIGN BY: JAT  
DRAWN BY: MGK  
FILE No. 02005.s1.DWG  
PROJECT NUMBER:  
**02005**

SHEET: OF  
**S6 6**