

**WINDOW & DOOR NOTES:**

**EXTERIOR HOLLOW METAL DOORS & FRAMES:**  
 PROVIDE 1/4 GAUGE HOLLOW METAL DOOR FRAME W/ WELDED & GROUND CORNERS.  
 PROVIDE 1/6 GAUGE THERMALLY INSULATED GALVANIZED HOLLOW METAL DOOR.  
 PROVIDE 4 1/2" x 4 1/2" STAINLESS STEEL HINGES.  
 PROVIDE AND INSTALL MANUFACTURERS RECOMMENDED ALUMINUM THRESHOLD AND WEATHERSTRIPPING.

**INTERIOR HOLLOW METAL DOORS & FRAMES:**  
 PROVIDE 1/6 GAUGE HOLLOW METAL DOOR FRAME W/ WELDED & GROUND CORNERS W/ 4" HEAD.  
 PROVIDE 1/6 GAUGE THERMALLY INSULATED GALVANIZED HOLLOW METAL DOOR.  
 PROVIDE 4 1/2" x 4 1/2" STAINLESS STEEL HINGES.

**OVERHEAD DOOR:**  
 FRONT SLAT TO BE 20 GAUGE GALVANIZED STEEL.  
 INTERIOR SLAT TO BE 24 GAUGE GALVANIZED STEEL.  
 PROVIDE MANUFACTURERS STANDARD FINISH FOR INTERIOR & EXTERIOR SLATS AND HOOD. ALL OTHER STEEL REQUIRED FOR THE PROPER ATTACHMENT AND INSTALLATION OF THE OVERHEAD DOOR TO BE GALVANIZED.  
 PROVIDE GUIDES & TRACKS AS RECOMMENDED BY THE MANUFACTURER.  
 PROVIDE MANUFACTURERS STANDARD COUNTERBALANCE DESIGNED FOR 20,000 CYCLE LIFE.  
 PROVIDE INTERIOR BOTTOM BAR SLIDE BOLTLOCK & CHAIN KEEPER LOCKS.

CONTRACTOR TO PROVIDE LINE ITEM PRICE FOR OVERHEAD DOOR AS DESCRIBED IN THESE DRAWINGS, WITH OVERHEAD DOOR MANUFACTURERS STANDARD STAINLESS STEEL CONSTRUCTION AND ATTACHMENTS.

**DOOR SCHEDULE**

DOORS								FRAMES		
NO.	SIZE (w x h)	THK	TYPE	FR	INSUL	HDWE	REMARKS	MATL	HEAD	JAMB
1	3'-0"x6'-8"	1 5/8"	HM	N/A	TH	SET 1	w/ HOLD OPEN CLOSER	HM	SEE NOTES	
2	6'-0"x10'-0"	3/4"	COIL	N/A	TH	SET 2	625 SERIES BY OVERHEAD DOOR CO.	STEEL	SEE NOTES	
3	3'-0"x7'-0"	1 5/8"	HM	1 HR	N/A	SET 3	w/ HOLD OPEN CLOSER	HM	SEE NOTES	

SET 1: ARROW B SERIES LEVER "ENTRANCE FUNCTION" STAINLESS STEEL, HEAVY-DUTY, DOUBLE-LOCK, DEADBOLT OR APPROVED EQUAL.  
 SET 3: ARROW 5 SERIES "CLASSROOM FUNCTION" STAINLESS STEEL, HEAVY-DUTY OR APPROVED EQUAL.

**ABBREVIATIONS**

AL	ALUMINUM	T	TEMPERED
F	EXISTING	TI	THERMAL INSULATED
EMHO	ELECTRO MAGNETIC HOLD OPERATOR	V	VINYL
GL	GLASS	W	WIRE
HM	HOLLOW METAL	WD	WOOD
SS	STAINLESS STEEL	WJ	WITH

**ABBREVIATIONS**

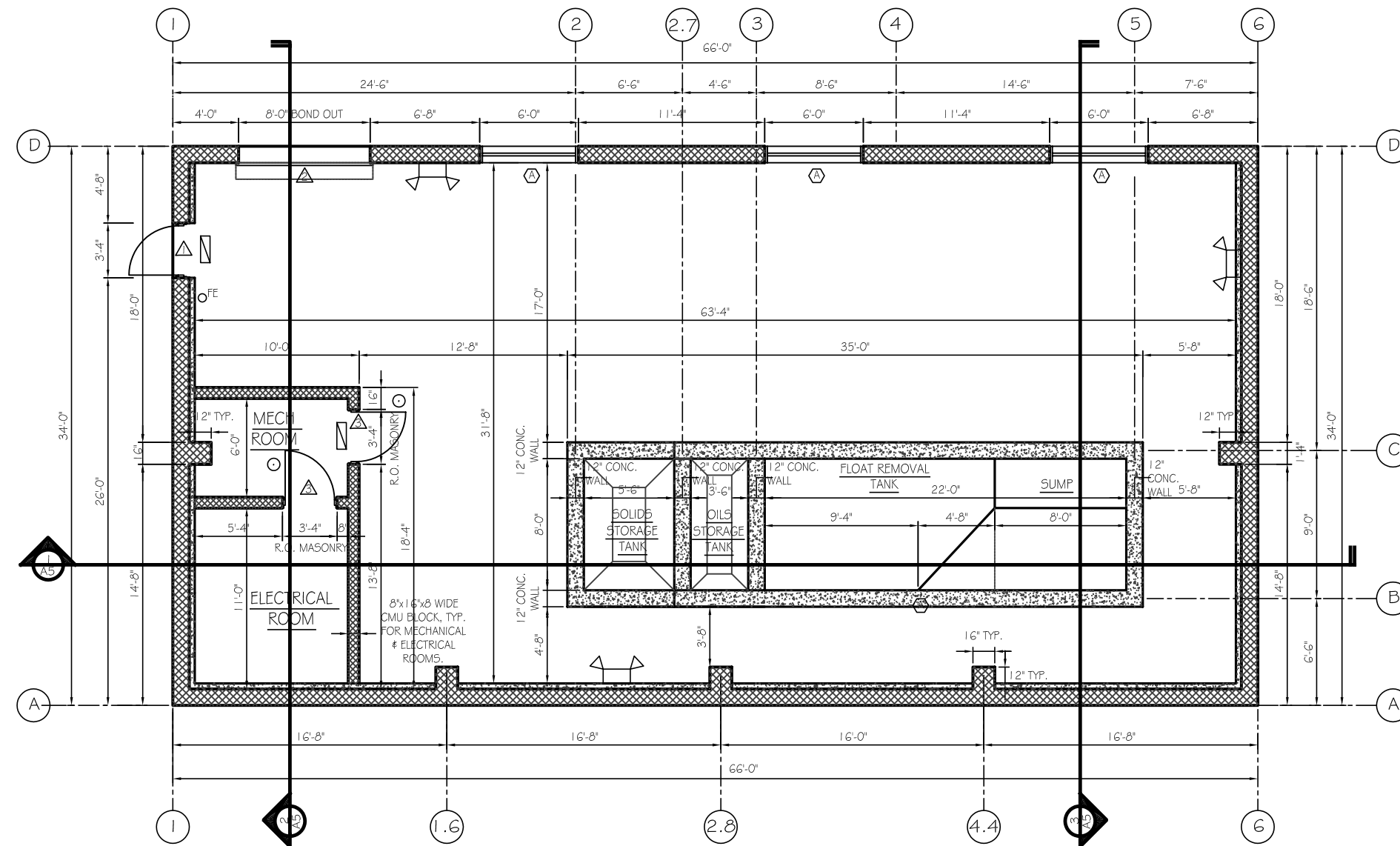
AL	ALUMINUM	T	TEMPERED
F	EXISTING	TI	THERMAL INSULATED
EMHO	ELECTRO MAGNETIC HOLD OPERATOR	V	VINYL
GL	GLASS	W	WIRE
HM	HOLLOW METAL	WD	WOOD
SS	STAINLESS STEEL	WJ	WITH

**WINDOW SCHEDULE**

WINDOWS								FRAMES			
NO.	SIZE (w x h)	THK	TYPE	FR	INSUL	HDWE	REMARKS	MATL	HEAD	JAMB	SILL
1	72"x40"	1"	GL	N/A	TH	N/A	FIXED WIN. UNIT, DARK BRONZE FINISH	AL	PER MANUFACTURER		

**NFPA LEGEND:**

- FE ○ FIRE EXTINGUISHER W/ WALL MOUNTING BRACKET
- EMERGENCY LIGHT W/ BATTERY BACK-UP
- ▨ EXIT LIGHT W/ BATTERY BACK-UP MOUNTED MIN. 84" ABOVE FINISHED FLOOR
- "NOT AN EXIT" SIGN MOUNTED ON DOOR



**WASTEWATER PRETREATMENT BUILDING PLAN VIEW**

SCALE: 1/4" = 1'-0"

**ASSOCIATED DESIGN PARTNERS INC.**  
 Office: (207) 878-1751  
 Fax: (207) 878-1788  
 E-Mail: [ahp@maine.net](mailto:ahp@maine.net)  
 80 Leighton Road  
 Falmouth, Maine 04105

THIS DRAWING, DESIGN AND ELECTRONIC FILE ARE THE PROPERTY OF ASSOCIATED DESIGN PARTNERS, INC. THE REPRODUCTION, COPYING OR ANY OTHER USE OF THIS DOCUMENT WITHOUT WRITTEN CONSENT IS PROHIBITED.

PROJECT: **WSTWTR. PRETREATMENT BLDG**  
 FOR: BARBER FOODS, PORTLAND, MAINE  
 SHEET TITLE: **FLOOR PLAN, DOOR & WINDOW SCHEDULES**

NO.	REVISIONS	DATE
	DESCRIPTION	

DATE: 12/30/02  
 SCALE: 1/4" = 1'-0"  
 DESIGN BY: JAT  
 DRAWN BY: MGK  
 FILE No. 02005-A1.DWG  
 PROJECT NUMBER: **02005**  
 SHEET: OF **A1 5**