

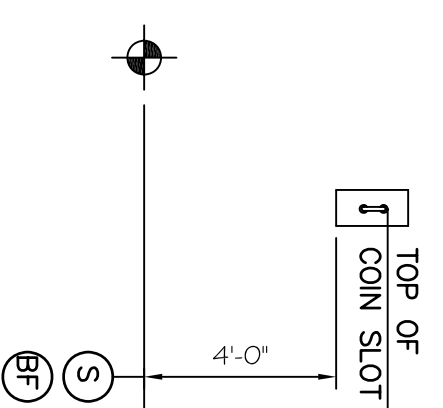
**ACCESSIBILITY ACCESSORY MOUNTING HEIGHTS**

GRAB BARS	33" - 36"
TOWEL PAPER HOLDER	19" MIN
TOWEL PAPER/TOWEL DISPENSER	48" MAX
BOIL N' PAPER TOWEL DISPENSER	48" MAX
BOIL N' PAPER TOWEL DISPENSER	48" MAX
SANITARY NAPKIN DISPENSER	48" MAX
SANITARY NAPKIN DISPOSAL	19" MAX
MIRROR (BOTTOM)	40" MAX
SHELVES/STORAGE	48" MAX
ELECTRICAL SWITCHES/OUTLETS	48" MAX
COAT HOOKS/RODS	48" MAX
signage (to braille component)	60" MAX

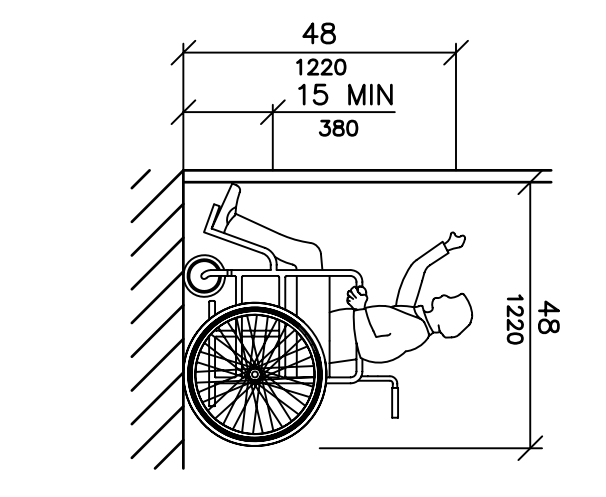
**ACCESSIBILITY GENERAL NOTES**

1. DOORWAYS SHALL HAVE A MINIMUM CLEAR WIDTH OF 32" WITH THE DOOR OPEN 90 DEGREES, MEASURED BETWEEN THE FACE OF THE DOOR AND THE OPPOSITE STOP.
2. ALL DOORS SHALL HAVE LEVER HANDLE HARDWARE, EXCEPT AT SECURED STORAGE ROOMS, MECHANICAL ROOMS, AND ELEVATOR MACHINE ROOMS.
3. ALL CLOSERS SHALL BE SLIP PULL MAXIMUM AT DOORS EQUIPPED WITH LEVER HANDLE HARDWARE.
4. ALL DOORS WITH CLOSERS SHALL HAVE 18" CLEAR DISTANCE FROM THE LATCHSIDE OF THE OPENING TO ANY ADJACENT WALL OR OBSTRUCTION ON THE PULL SIDE OF THE OPENING.
5. ALL DOORS WITH CLOSERS SHALL HAVE 12" CLEAR DISTANCE FROM THE LATCHSIDE OF THE OPENING TO ANY ADJACENT WALL OR OBSTRUCTION ON THE PUSH SIDE OF THE OPENING.
6. all signage shall be mounted 60" off to braille component at latch-side wall of doors and openings.

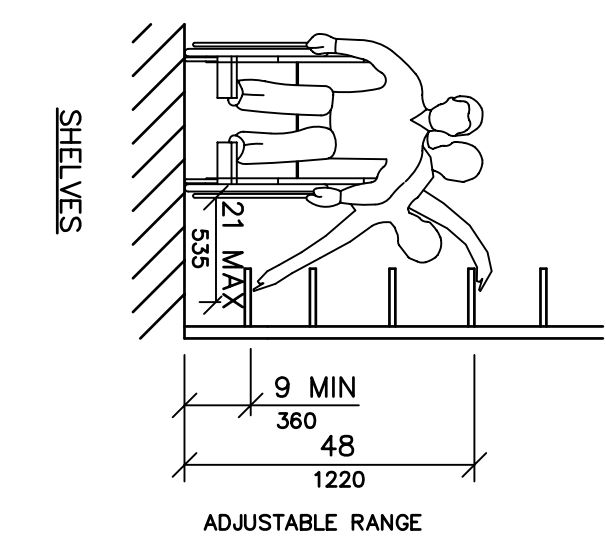
**PUBLIC TELEPHONE**



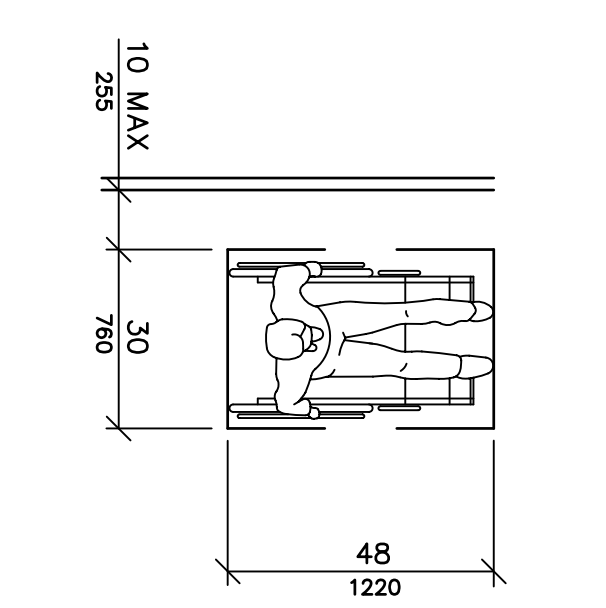
**HIGH FORWARD REACH LIMIT**



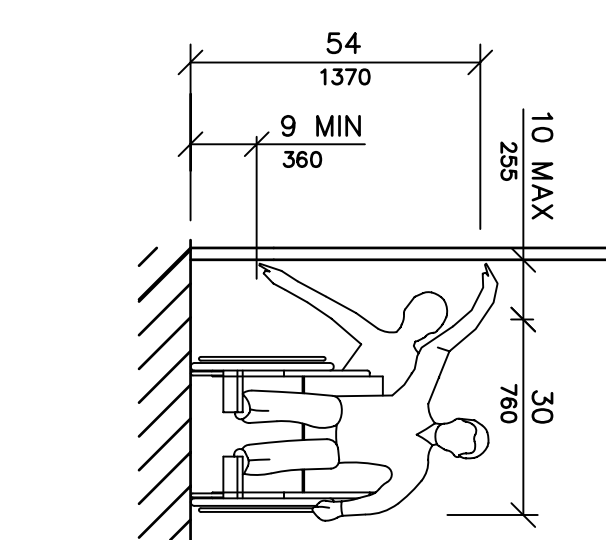
**STORAGE SHELVES AND CLOSETS**



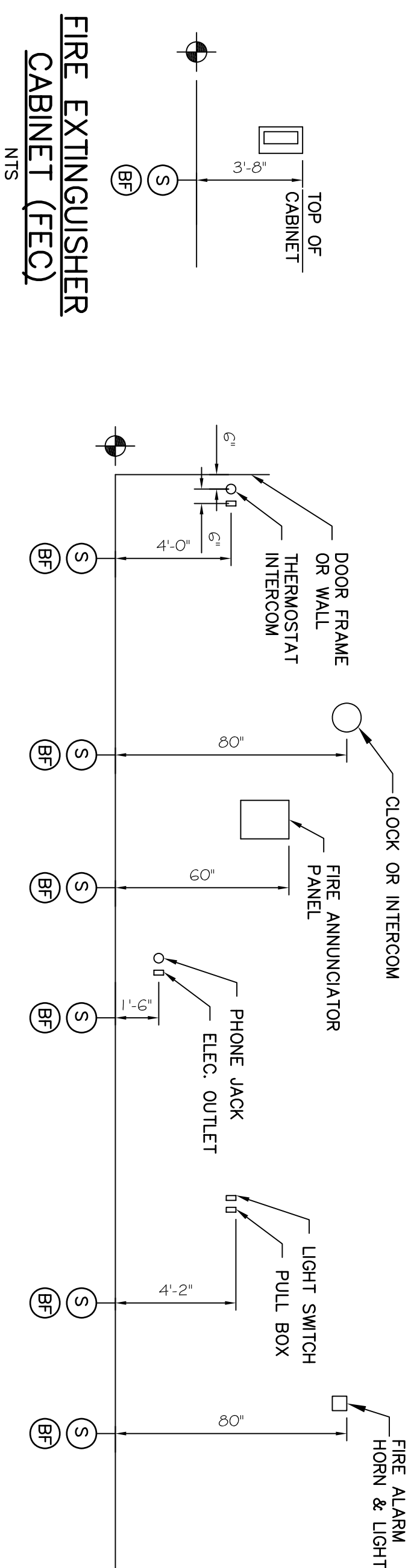
**CLEAR FLOOR SPACE PARALLEL APPROACH**



**HIGH AND LOW SIDE REACH LIMITS**



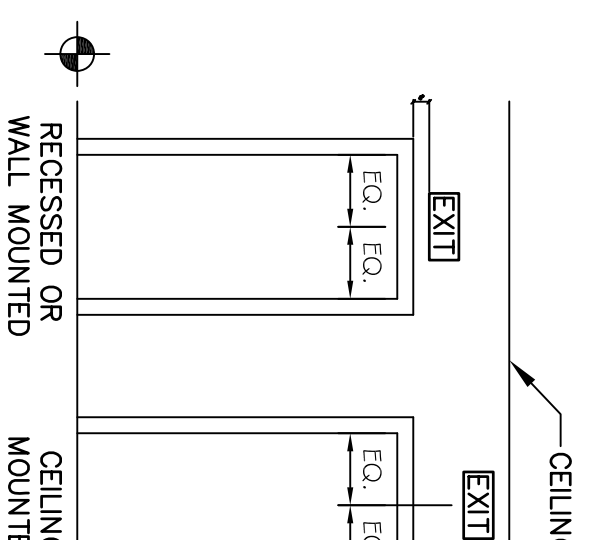
**FIRE EXTINGUISHER CABINET (FECC)**



**ELECTRICAL & FIRE PROTECTION DEVICES TYPICAL UNLESS NOTED OTHERWISE**

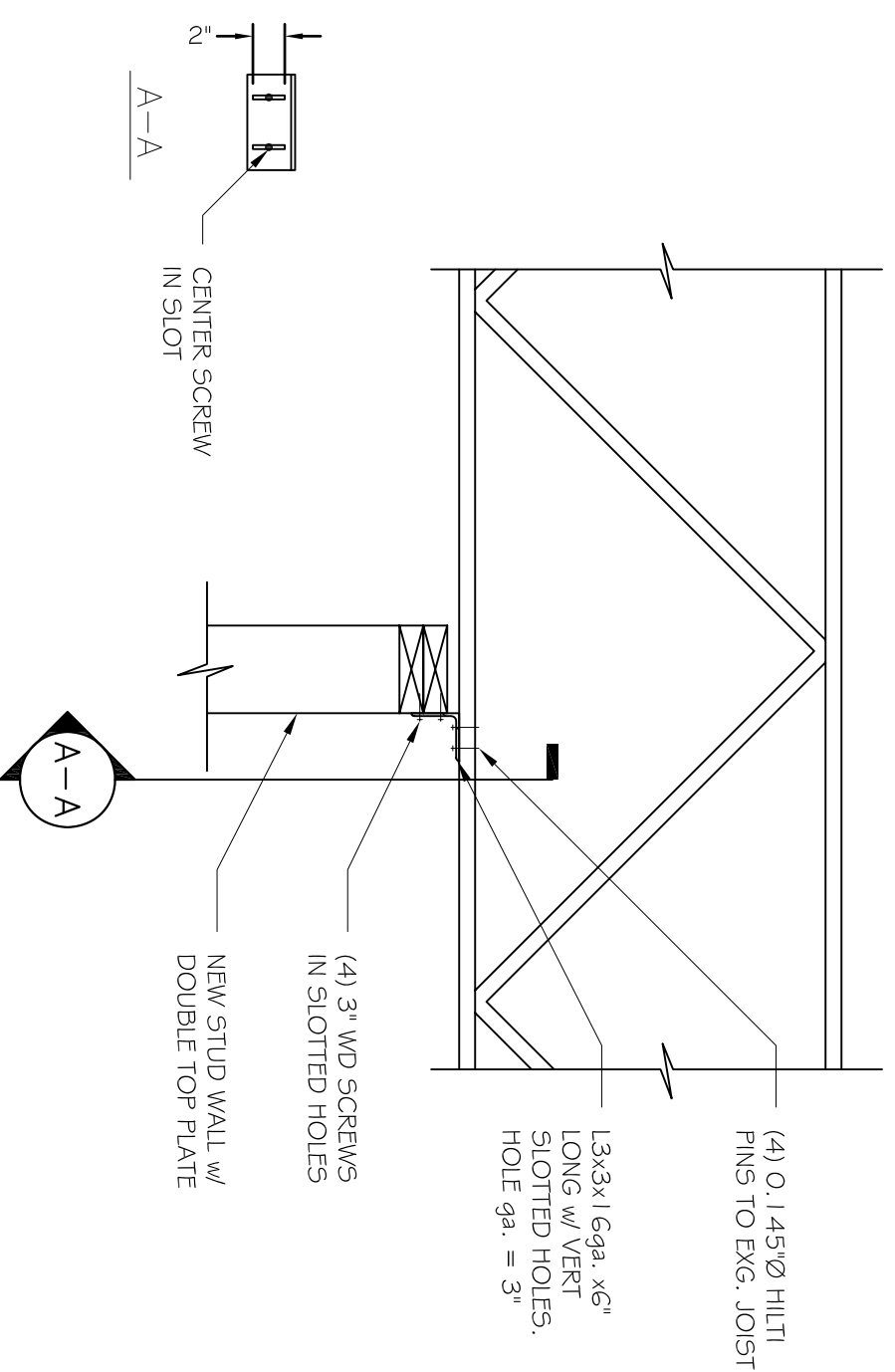
- LEGEND**
- (S) STANDARD MOUNTING HEIGHT
  - (BR) BARRIER FREE ADULT MOUNTING HEIGHT
  - FINISH FLOOR LINE

**NOTE**  
MOUNT ALL FIXTURES AT STANDARD MOUNTING HEIGHT UNLESS INDICATED ON PLAN BY A & SYMBOL. A & SYMBOL AT ANY ROOM SHALL INCLUDE ONE OF ANY FIXTURE AND ACCESSORY WITHIN THE ROOM.



**TYPICAL UNLESS OTHERWISE NOTED**

**ADA / NFPA NOTES AND DETAILS**



**B4 PARTITION WALL ATTACHMENT TO EXG. ROOF JOIST**

**B3 WINDOW / DOOR / FINISH SCHEDULE**

NO.	NAME	WALLS	FLOOR	CEILING	BASE BOARD	WINDOW/SILL	WINDOW/JAMB/HD	DOOR/JAMB/HEAD
401	CONFERENCE	PAINTED PAPERLESS GWB	VCT BATTLE BY OWNER	2,2 ACOUSTIC CEILING TILE	VINYL COVE BASE	1/2 PAINTED COMPOSITE BD	FRP RETURN	FRP RETURN
402	BIO-LAB	FRP OVER FRAMED, PAPERLESS GWB	VCT BATTLE BY OWNER	2,2 ACOUSTIC CEILING TILE	VINYL COVE BASE	1/2 PAINTED COMPOSITE BD	GWB RETURN	GWB RETURN
403	CORRIDOR	PAINTED PAPERLESS GWB	VCT BATTLE BY OWNER	2,2 ACOUSTIC CEILING TILE	VINYL COVE BASE	1/2 PAINTED COMPOSITE BD	GWB RETURN	GWB RETURN
404	CORRIDOR	PAINTED PAPERLESS GWB	VCT BATTLE BY OWNER	2,2 ACOUSTIC CEILING TILE	VINYL COVE BASE	1/2 PAINTED COMPOSITE BD	GWB RETURN	GWB RETURN
405	UNL SEX LAV	PAINTED PAPERLESS GWB	VCT BATTLE BY OWNER	2,2 ACOUSTIC CEILING TILE	VINYL COVE BASE	1/2 PAINTED COMPOSITE BD	GWB RETURN	GWB RETURN

**WINDOW SCHEDULE**

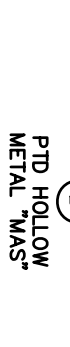
NO.	TYPE	MANUFACTURER	MODEL	NOMINAL SIZE	DETAILS	REMARKS
1	STOREFRONT	KAWNEER	TRI FAB 400	1'-9 1/2" x 7'-11 1/2"	SEE ELEVATIONS	

**ROOM FINISH SCHEDULE**

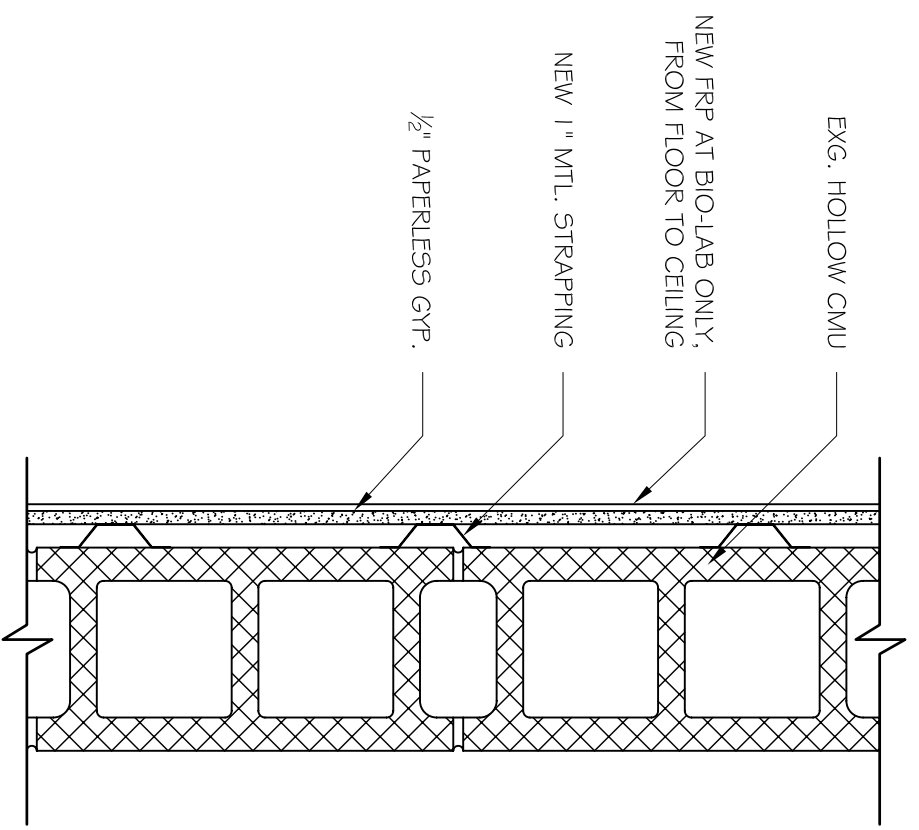
**DOOR SCHEDULE**

NO.	TYPE	SIZE (W x H)	THK	INSUL	HOWE	FR	GLASS	REMARKS	TYPE	FR	PROFILE	DETAILS	THRESHHOLDS
101	A	3070	1 3/4	Y	HW-1	1HR	FR/INSUL 2'X3'		P/HW	1HR	MAS	HEAD	ALUM
102	B	3070	1 3/4	NO	HW-1	1HR	FR/INSUL 4'X25"		P/HW	1HR	DW	---	---
103	C	3070	1 3/4	NO	HW-2	NO	NO		P/HW	NO	DW	---	---
104	C	3070	1 3/4	NO	HW-2	1HR	NO		P/HW	1HR	DW	---	---

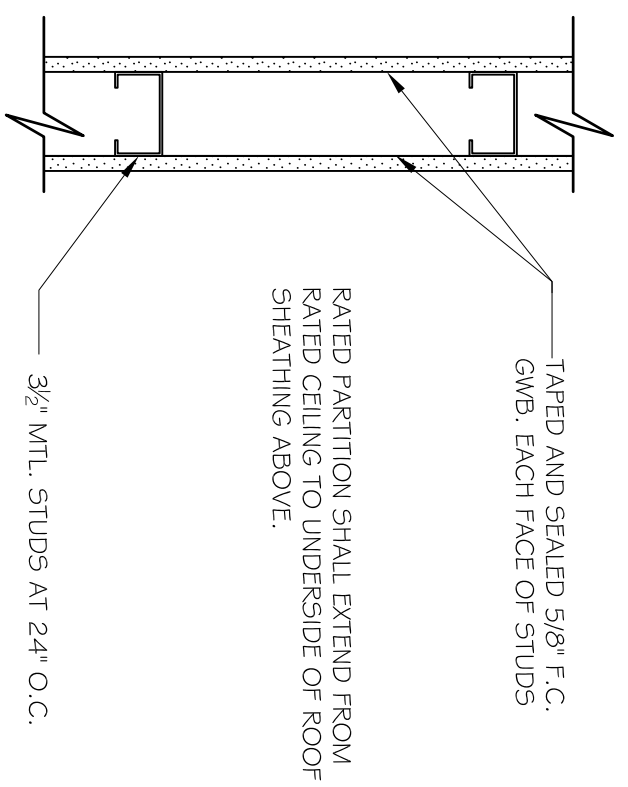
**DOOR HARDWARE**  
HW-1 BUTTS, CLOSER, EXIT FUNCTION LEVER, LOCKSET, SILENCERS, THRESHOLD, WEATHER STRIPPING, DOOR BOTTOM/SWEEP  
HW-2 BUTTS, CLOSER, EXIT FUNCTION LEVER, LOCKSET, SILENCERS.  
**NOTES**  
1) ALL LATCH/ LOCKSETS SHALL BE BORED WITH LEVER HANDLES.



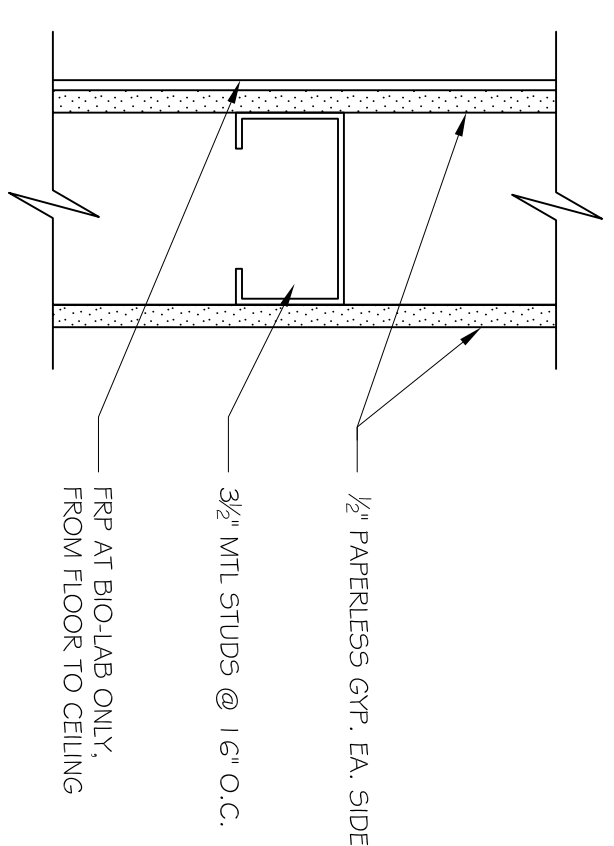
**B4 PARTITION WALL ATTACHMENT TO EXG. ROOF JOIST**



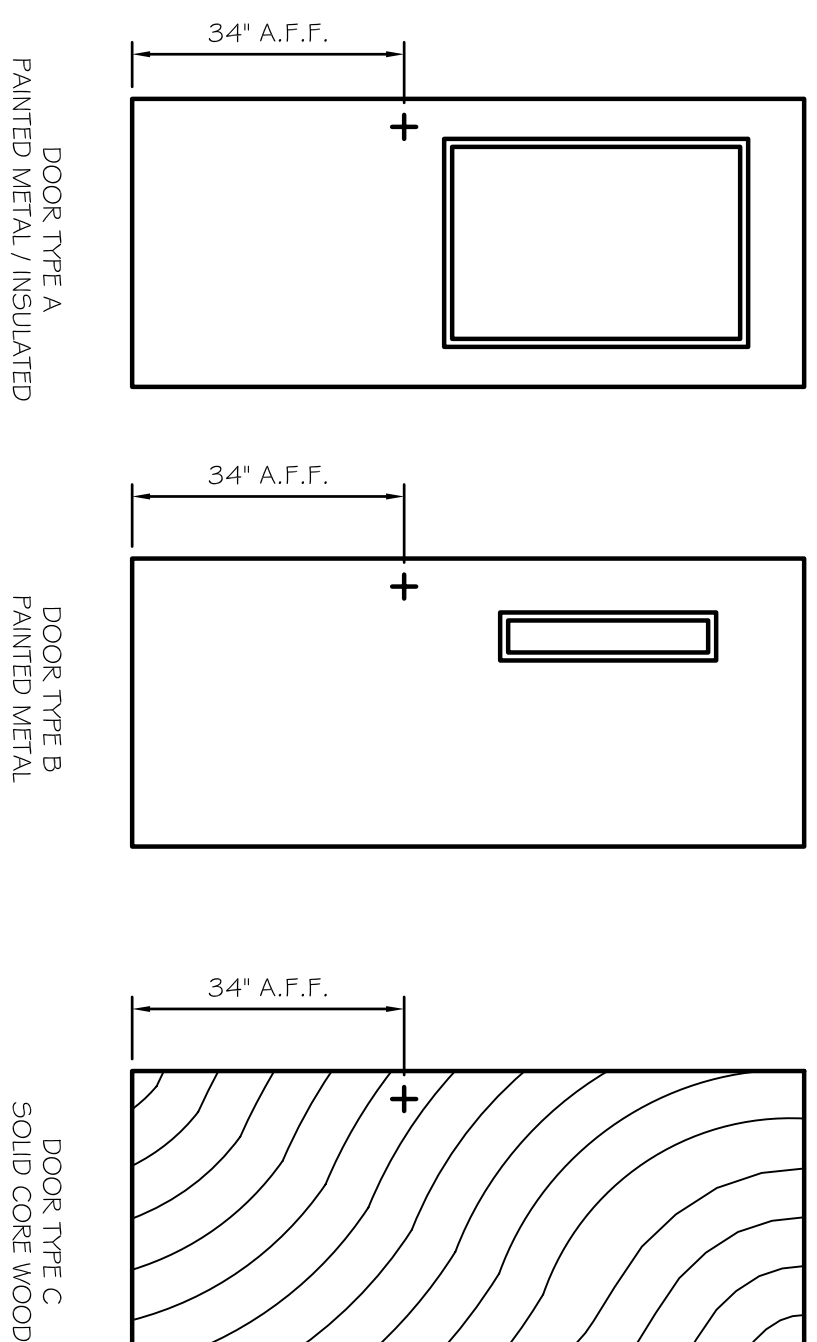
**B3 WINDOW / DOOR / FINISH SCHEDULE**



**A2 NON-RATED INTERIOR PARTITION TYPE**



**A1 WINDOW AND DOOR TYPES**



**A4 NON-RATED INTERIOR PARTITION TYPE**

**A3 1HR RATED PARTITION TYPE**

**A2 NON-RATED INTERIOR PARTITION TYPE**

**A1 WINDOW AND DOOR TYPES**

NO.	BY	REVISIONS DESCRIPTION	DATE
1			

PROJECT: **BIO-LAB + CONFERENCE ROOM**  
70 SAINT JOHN ST, PORTLAND ME  
FOR: BARBER FOODS INC.  
SHEET TITLE: **DOOR, WINDOW, AND ADA DETAILS**  
ISSUED FOR PERMITTING

THIS DRAWING IS FOR THE EXCLUSIVE USE OF ASSOCIATED DESIGN PARTNERS, INC. ANY REUSE OR REPRODUCTION OF THIS DOCUMENT WITHOUT WRITTEN CONSENT IS PROHIBITED.

**ASSOCIATED DESIGN PARTNERS INC.**  
80 Leighton Road Falmouth, Maine 04105  
Office: (207) 878-1751  
Fax: (207) 878-1788  
E-Mail: adp@adpengineering.com



DATE: 2-11-09  
SCALE: AS NOTED  
DESIGN BY: ASW  
DRAWN BY: RC  
FILE #: 08170-4601.DWG  
PROJECT NUMBER:  
**08373**  
SHEET NO:  
**A601**