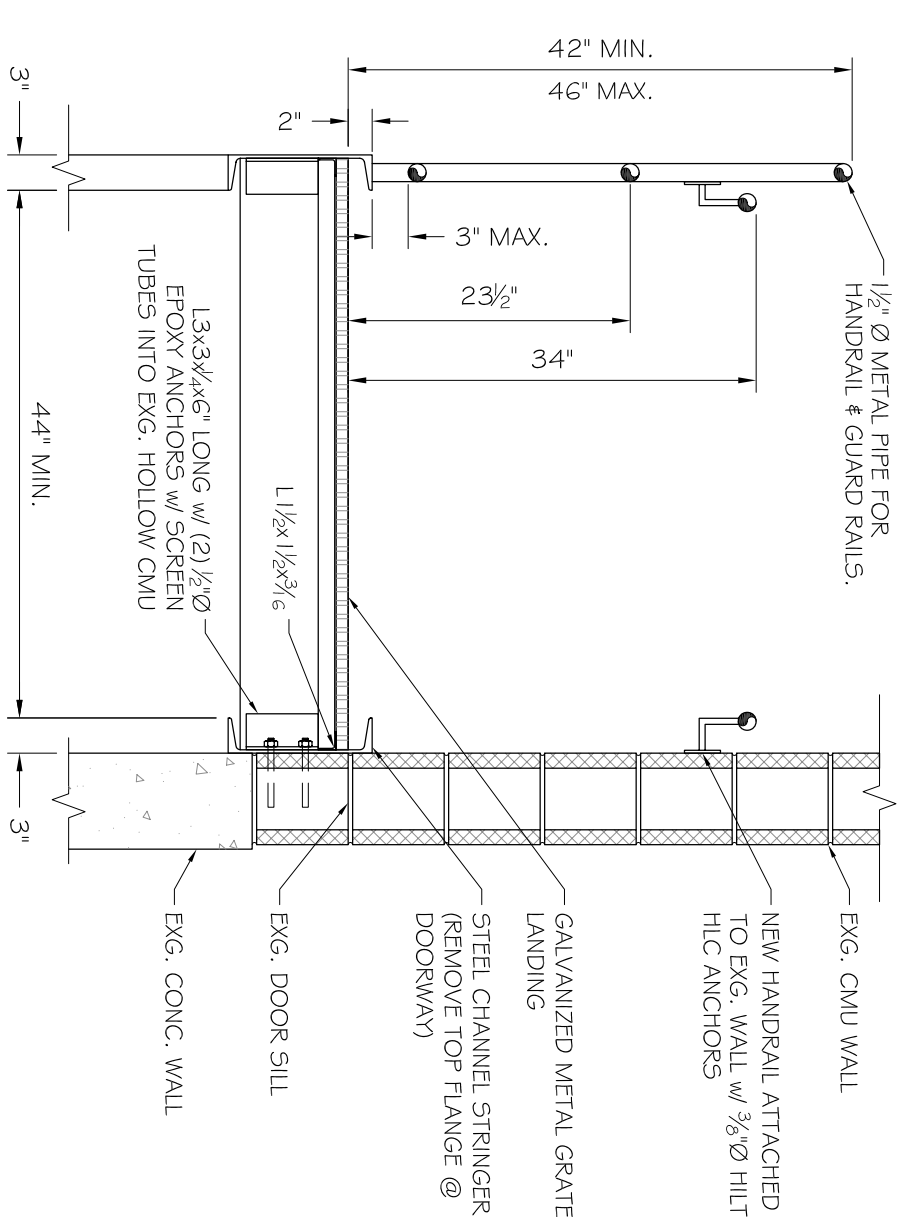
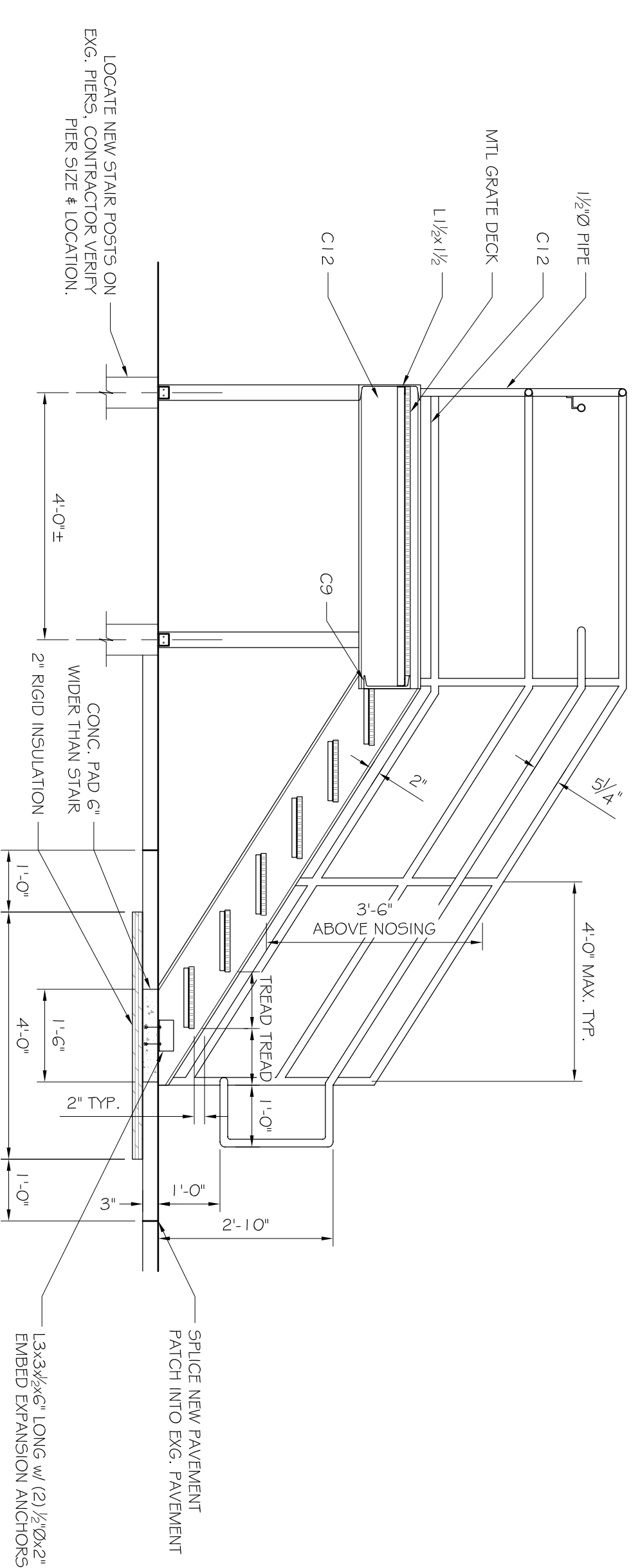


- NOTES:
 1.) ALL STEEL @ ENTRY STAIRS TO BE
 PAINTED & PAINTED 2 COATS TO
 2.) ALL HANDRAILS/GUARDRAIL
 CONNECTIONS TO BE FULLY
 WELDED.



B2 ENTRY STAIR SECTION

SCALE: 1/2" = 1'-0"

B1 ENTRY STAIR LANDING SECTION

SCALE: 1/2" = 1'-0"

- NFPA LEGEND**
- FIRE ALARM CONTROL PANEL
 - FIRE ALARM KNOX BOX
 - FIRE ALARM PULL STATION
 - SMOKE DETECTION
 - HEAT DETECTION
 - EMERGENCY LIGHT
 - EXIT LIGHT
 - 110 CAMPBELL 15 4P HORNSTROBE UNIT
 - 110 CAMPBELL STROBE LIGHT
 - 10# AEG FIRE W/ BRACKET
 - NOT AN EXIT SIGN

- BIO-LAB NOTES:**
1. ALL STRUCTURE & APPLIANCES FURNISHED BY OWNER.
 2. REMOVE EXG. FIRE SPRINKLER HEADS TO NEW CEILING LEVEL. ADD ADDITIONAL HEADS AS RECD BY NFPA 1.3.
 3. REMOVE APPROX. 3000' OF EXG. 8"x8" ASBESTOS FLOOR TILE.
 4. INSTALL ELECTRICAL OUTLETS ABOVE NEW COUNTERTOPS AT 36" O.C.
 5. SET NEW STAIR NEWEL POSTS IN BIO-LAB STAIRS IN ACCORDANCE WITH MEET PERFORMANCE SPECIFICATIONS. UNDERSIDE OF EXISTING CONCRETE SLAB IS ACCESSIBLE FOR UTILITY INSTALLATIONS.
 7. STRUCTURAL ANALYSIS OF EXISTING ROOF FRAMING TO BE COMPLETED AT JOISTS TO SUPPORT NEW RTU EQUIPMENT AFTER SIZE AND WEIGHT CONTRIBUTION IS SPECIFIED BY DESIGN/BUILD MECHANICAL CONTRACTOR.

