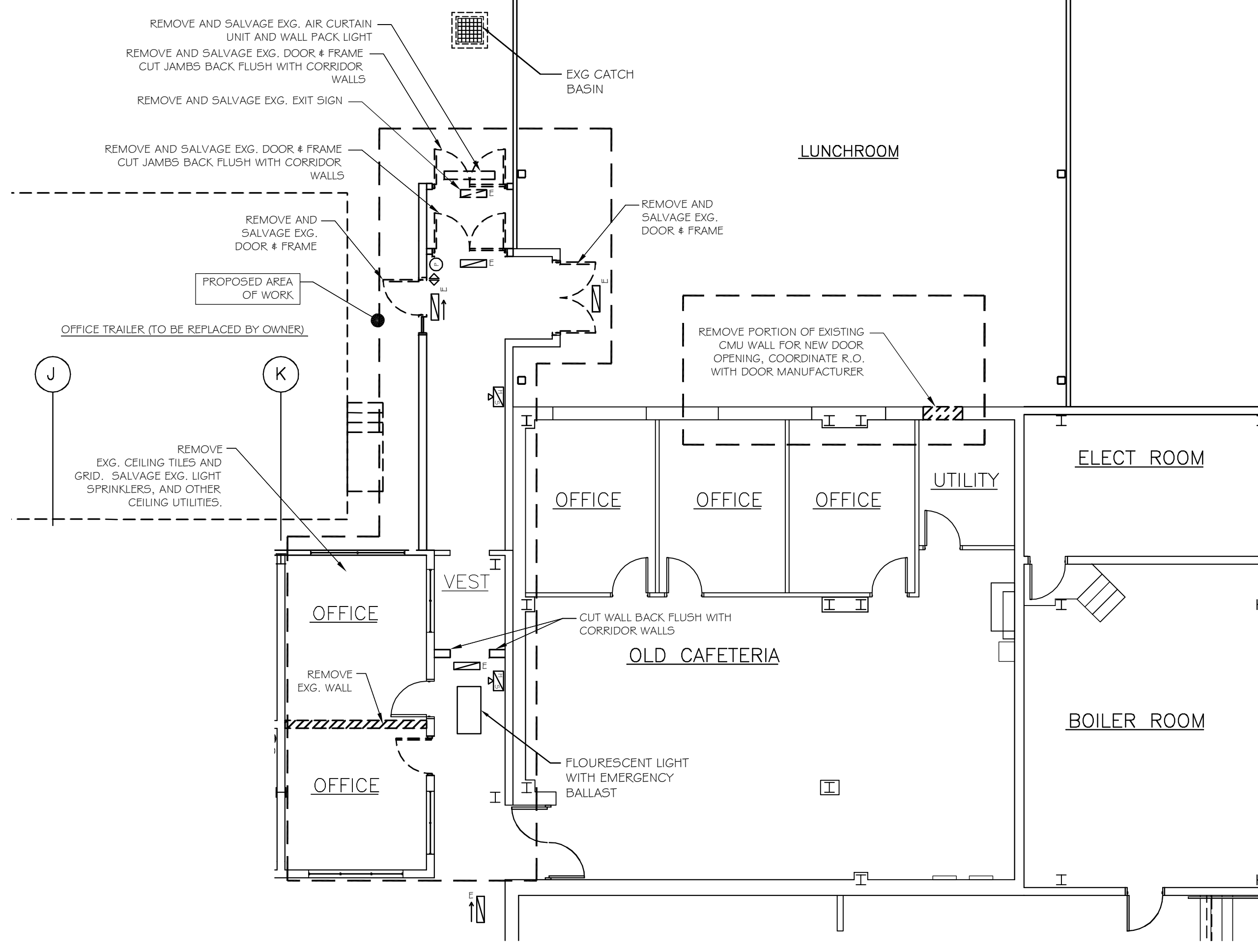
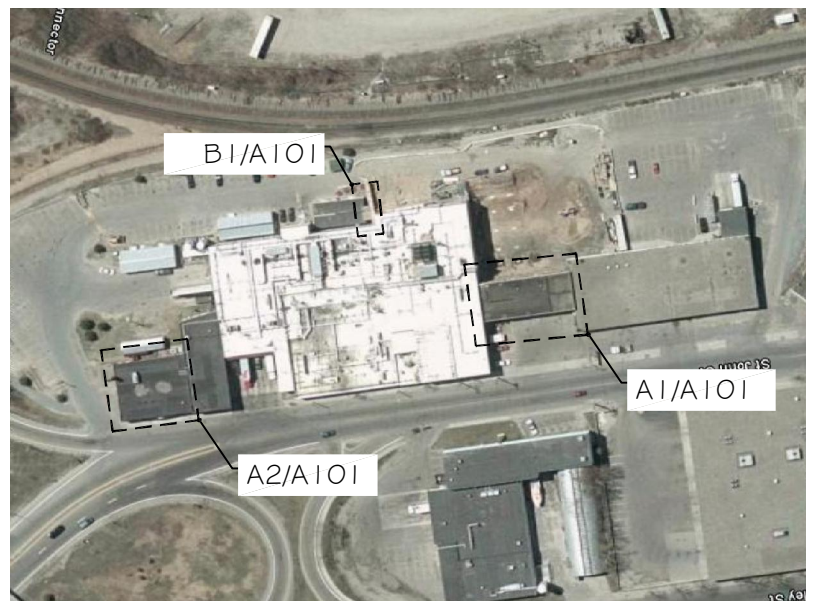


NOTES:  
1. REMOVE EXISTING CEILING TILES THROUGHOUT ADMIN AREA (APPROX. 4700 SF).

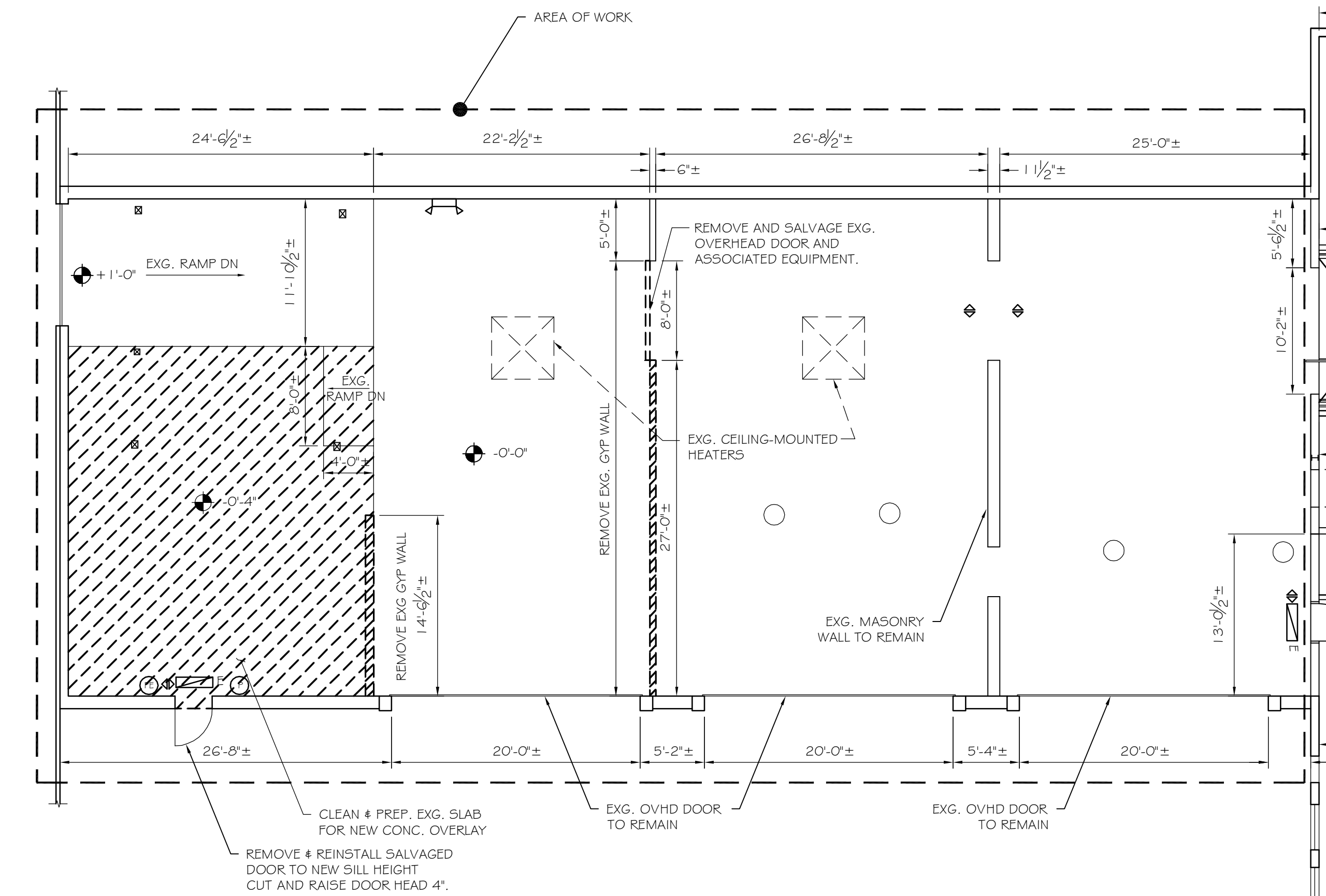
AREA OF WORK

- DEMO NOTES:
1. SALVAGE ALL INTERIOR DOORS
  2. INDICATES WALLS TO BE REMOVED
  3. PATCH ALL FLOOR TILES (MATCH EXISTING) AT EXISTING FULL HEIGHT 'GY' WALLS TO BE REMOVED.
  4. REMOVE ALL EXISTING CEILING TILES IN ADMIN AREA (APPROX. 4700 SF)

NFPA LEGEND	
	EMERGENCY LIGHT
	EXIT LIGHT
	1 # ABC FIRE EXTINGUISHER w/ BRACKET
	KNOX BOX
	MANUAL PULL STATION
	NOT AN EXIT SIGN
	SMOKE DETECTOR
	HORN STROBE UNIT (110db / 110cdd)
	STOBE UNIT (15cdd)
	FIRE ALARM CONTROL PANEL

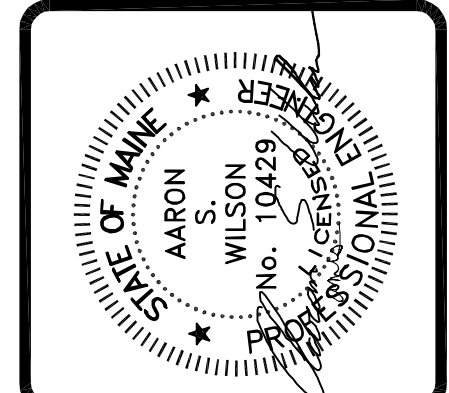


B1 DEMOLITION PLAN - PLANT WEST ENTRANCE  
SCALE: 1/8" = 1'-0"



- DEMOLITION NOTES:
1. SALVAGE ALL INTERIOR DOORS
  2. CAP ALL ABANDONED PLUMBING
  3. REMOVE ALL EXG. OVERHEAD LIGHT FIXTURES

A1 DEMOLITION PLAN - EQUIPMENT STORAGE  
SCALE: 1/8" = 1'-0"



**ASSOCIATED DESIGN PARTNERS INC.**  
Office: (207) 878-1751  
80 Leighton Road, Falmouth, Maine 04105  
Fax: (207) 878-1788  
E-Mail: [adp@adpengineering.com](mailto:adp@adpengineering.com)

THIS DRAWING, DESIGN AND ELECTRONIC FILE ARE THE PROPERTY OF ASSOCIATED DESIGN PARTNERS, INC. THE REPRODUCTION, COPYING OR ANY OTHER USE OF THIS DOCUMENT WITHOUT WRITTEN CONSENT IS PROHIBITED.

PROJECT: **BARBER FOODS RENOVATIONS**  
54-70 SAINT JOHN ST, PORTLAND ME  
FOR: BARBER FOODS INC.  
SHEET TITLE: **PARTIAL DEMOLITION PLANS ISSUED FOR PERMITTING**

REVISIONS	DATE
No.	BY
1	ASW
2	ASW
3	ASW
4	ASW

DATE : 10-29-08  
SCALE : AS NOTED  
DESIGN BY: ASW  
DRAWN BY: RC  
PROJECT NUMBER:  
**08170**  
SHEET NO:  
**D101**

A2 DEMOLITION PLAN - 54 ST. JOHN ST. ADMINISTRATIVE OFFICE  
SCALE: 1/8" = 1'-0"