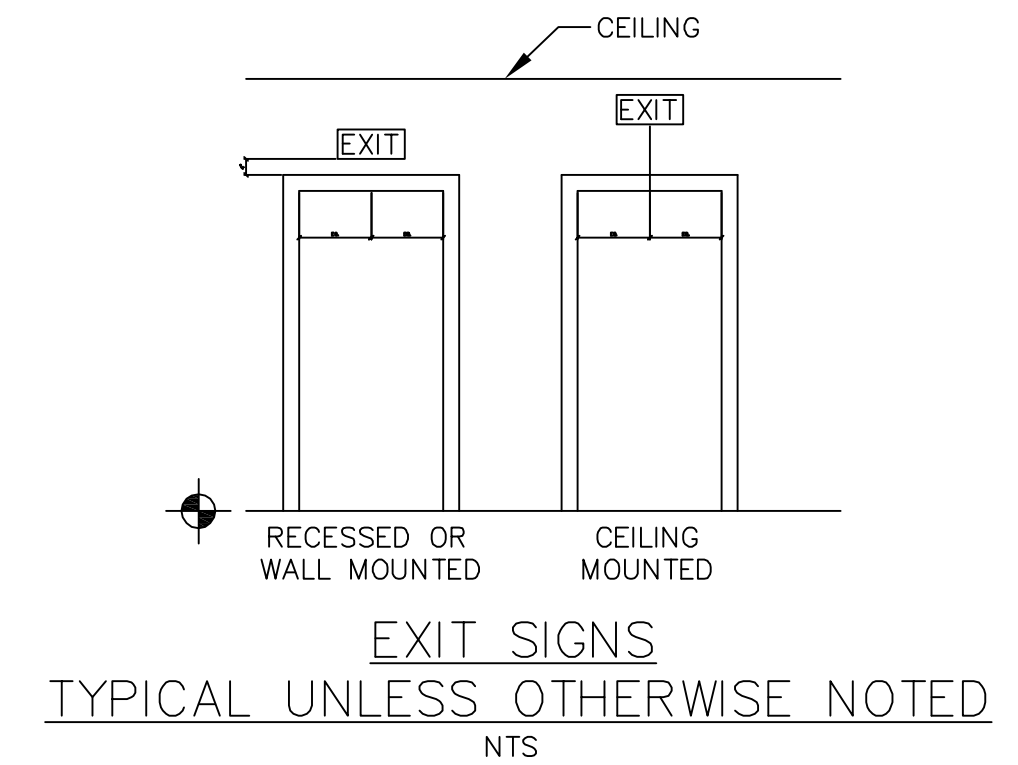
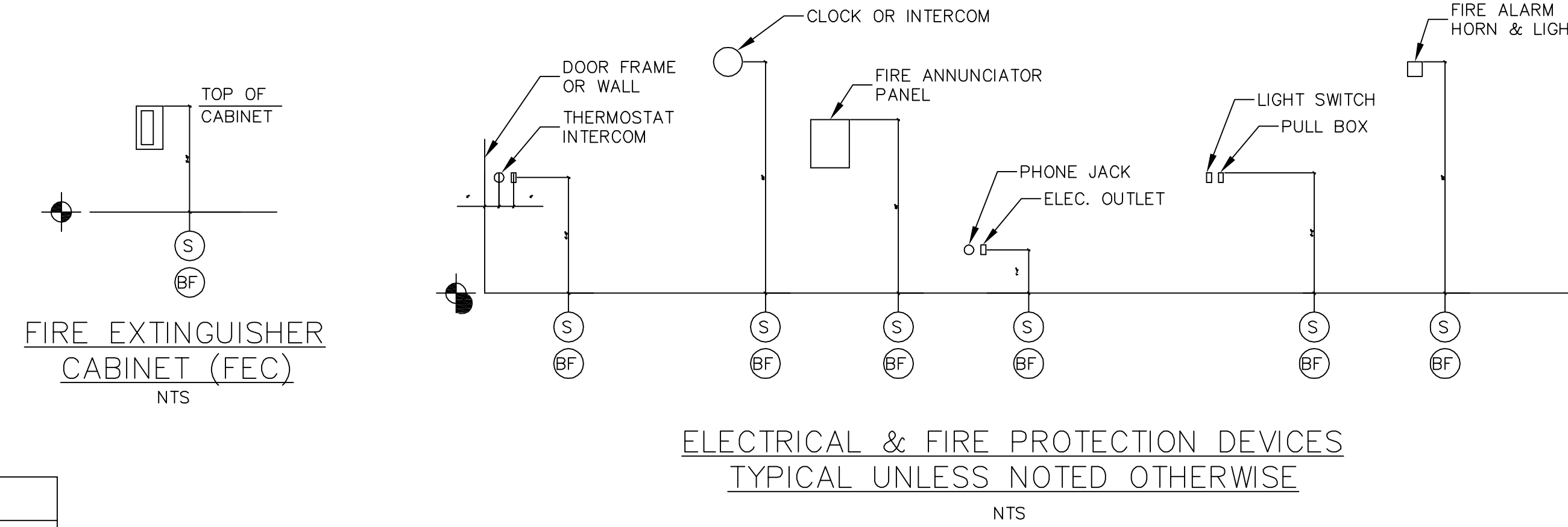
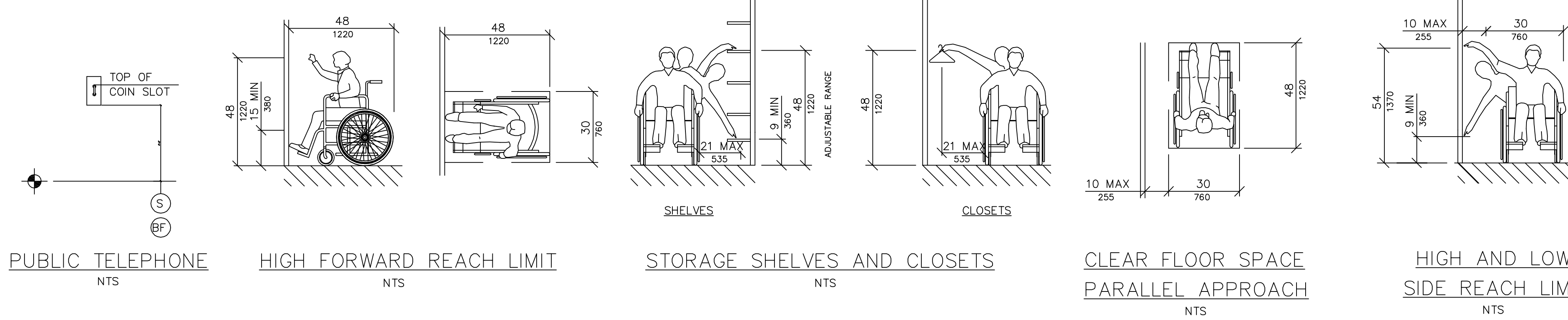


**ACCESSIBILITY ACCESSORY MOUNTING HEIGHTS**

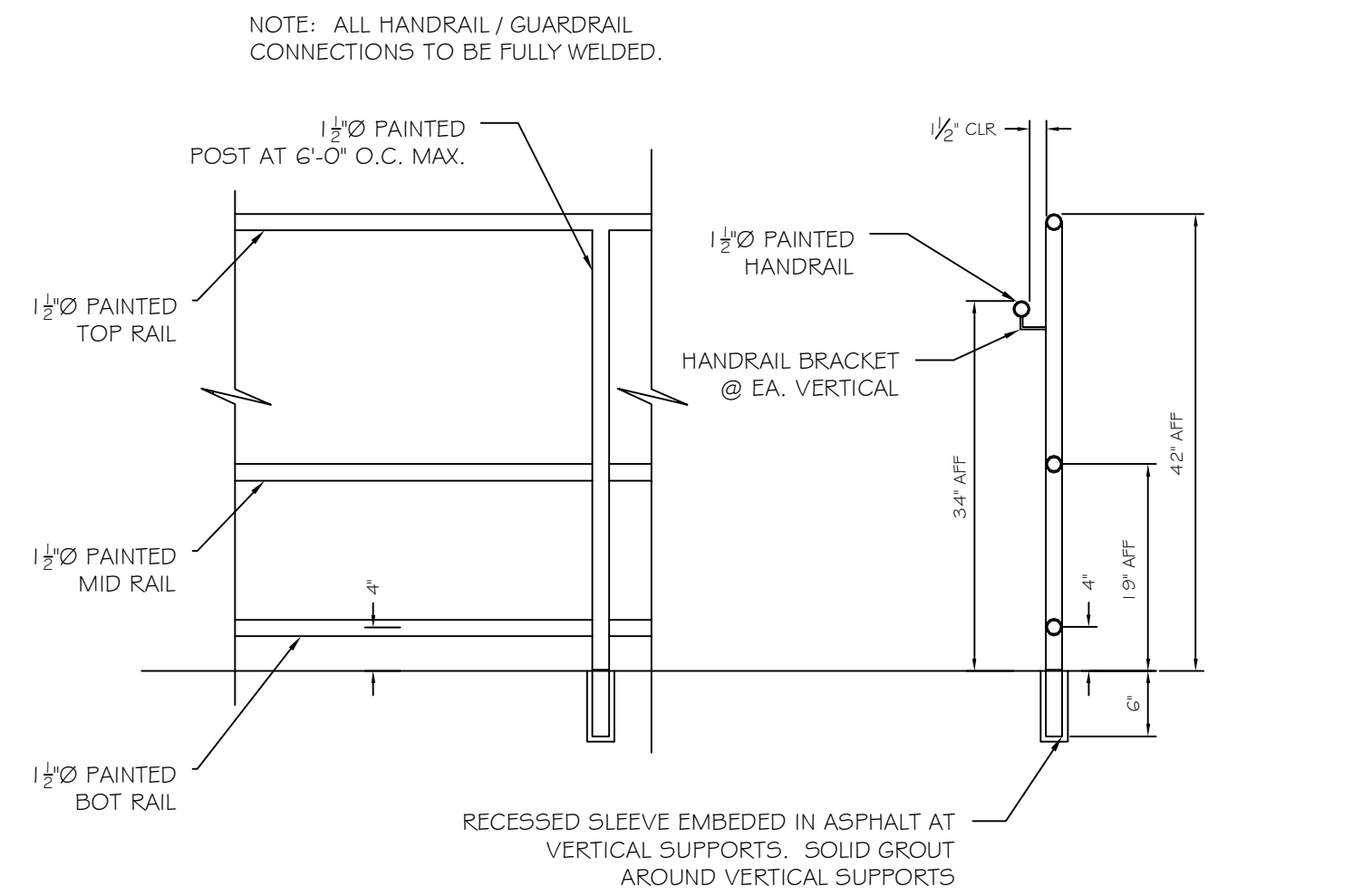
GRAB BARS	33" - 36"
TOILET PAPER HOLDER	19" MIN
TOWEL BAR/PAPER TOWEL DISPENSER	48" MAX
BUILT IN PAPER TOWEL DISPENSER	48" MAX
SOAP DISH/DISPENSER AT WALL	48" MAX
SANITARY NAPKIN DISPENSER	48" MAX
SANITARY NAPKIN DISPOSAL	19" MAX
MIRROR (BOTTOM)	40" MAX
SHELVES/STORAGE	48" MAX
ELECTRICAL SWITCHES/OUTLETS	48" MAX
COAT HOOKS/RODS	48" MAX
signage (to braille component)	60" MAX

**ACCESSIBILITY GENERAL NOTES**

- DOORWAYS SHALL HAVE A MINIMUM CLEAR WIDTH OF 32" WITH THE DOOR OPEN 90 DEGREES, MEASURED BETWEEN THE FACE OF THE DOOR AND THE OPPOSITE STOP.
- ALL DOORS SHALL HAVE LEVER HANDLE HARDWARE, EXCEPT AT SECURED STORAGE ROOMS, MECHANICAL ROOMS, AND ELEVATOR MACHINE ROOMS.
- ALL CLOSERS SHALL BE 5LB PULL MAXIMUM AT DOORS EQUIPPED WITH LEVER HANDLE HARDWARE.
- ALL DOORS WITH CLOSERS SHALL HAVE 18" CLEAR DISTANCE FROM THE LATCHSIDE OF THE OPENING TO ANY ADJACENT WALL OR OBSTRUCTION ON THE PULL SIDE OF THE OPENING.
- ALL DOORS WITH CLOSERS SHALL HAVE 12" CLEAR DISTANCE FROM THE LATCHSIDE OF THE OPENING TO ANY ADJACENT WALL OR OBSTRUCTION ON THE PUSH SIDE OF THE OPENING.
- all signage shall be mounted 60" off to braille component at latch-side wall of doors and openings.



**C4 ADA / NFPA NOTES AND DETAILS**  
SCALE: NTS



**WINDOW SCHEDULE**

NO.	TYPE	MANUFACTURER	MODEL	NOMINAL SIZE		DETAILS				REMARKS	
				WIDTH	HEIGHT	HEAD	JAMB	SILL	MUNT		MULL
1	STOREFRONT	KAWNEER	TRI FAB 400	19'-0"	7'-10 1/2"	-	-	-	-	-	SEE ELEVATIONS
2	STOREFRONT	KAWNEER	TRI FAB 400	11'-4"	7'-10 1/2"	-	-	-	-	-	SEE ELEVATIONS
3	STOREFRONT	KAWNEER	TRI FAB 400	11'-0"	7'-10 1/2"	-	-	-	-	-	SEE ELEVATIONS
4	STOREFRONT	KAWNEER	TRI FAB 400	7'-4"	7'-10 1/2"	-	-	-	-	-	SEE ELEVATIONS

ABBREVIATIONS:  
 AL ALUMINUM  
 EX EXISTING  
 EMHO ELECTRIC MAGNETIC HOLD OPERATOR  
 CL GLASS  
 FM FINISH  
 HM HOLLOW METAL  
 SS STAINLESS STEEL  
 T TEMPERED  
 TH THERMAL  
 V INSULATED  
 W WOOD  
 WPC WOOD  
 WTR WTR

**DOOR SCHEDULE**

NO.	TYPE	SIZE (w x h)	THK	INSUL	HDWE	FR	GLASS		REMARKS	FRAMES			THRESHHOLDS		
							TYPE	SIZE		TYPE	FR	PROFILE	DETAILS HEAD JAMB	MATERIAL	DETAILS SILL FIN
101	A	6070	2	TB	HW-1	NO	T/INSUL	FULL		ALUM	NO	1.75x4	-	-	ALUM ADA
102	B	3070	3/4	NO	HW-2	NO	NONE	NONE		MTL	NO	MAS	-	-	ALUM ADA

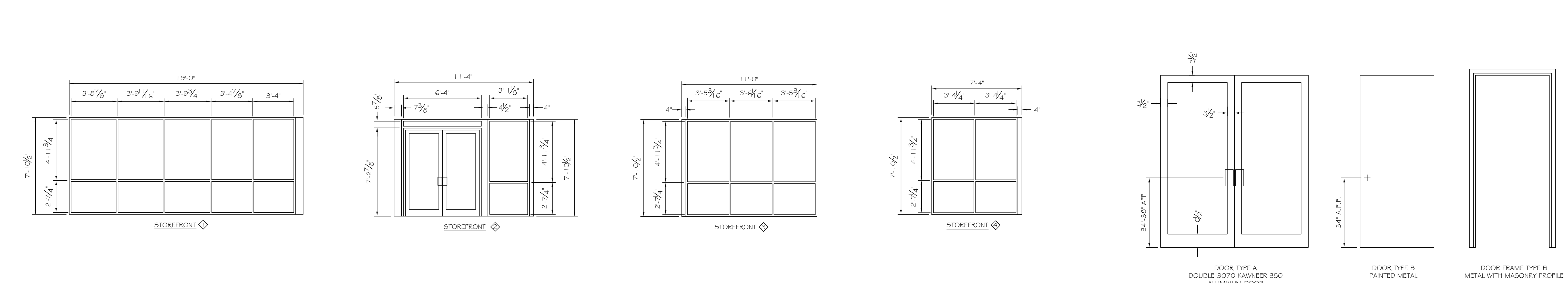
DOOR HARDWARE:  
 HW-1 BUTTS; CLOSER; BAR EXIT FUNCTION (PANIC DEVICE), THRESHOLD; WEATHER STRIPPING; DOOR BOTTOM/SWEEP.  
 HW-2 BUTTS; CLOSER; EXIT FUNCTION LEVER LOCKSET; SILENCERS

NOTES:  
 1) EXTERIOR DOORS SHALL BE KAWNEER SERIES 350 (OR EQUAL) AND SHALL HAVE  
 2) ALL LATCH/ LOCKSETS SHALL BE BORED WITH LEVER HANDLES.

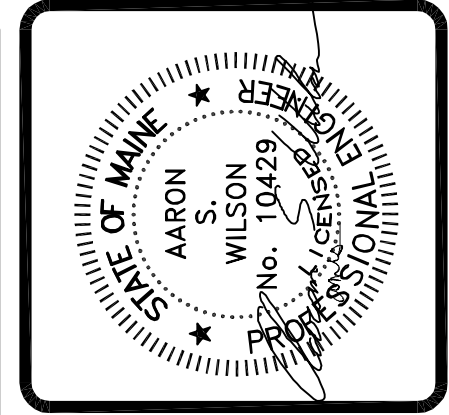
ALUMINUM STOREFRONT DOOR JAMB (KAWNEER PART 400-501 - VERIFY WITH MANUF.)

**B4 GUARDRAIL DETAILS**  
SCALE: NO SCALE

**B3 WINDOW AND DOOR SCHEDULE**  
SCALE: NTS



**A4 WINDOW AND DOOR TYPES**  
SCALE: NTS



**ASSOCIATED DESIGN PARTNERS INC.**  
 Office: (207) 878-1751  
 Fax: (207) 878-1788  
 E-Mail: adp@adpengineering.com  
 80 Leighton Road  
 Falmouth, Maine 04105

THIS DRAWING, DESIGN AND ELECTRONIC FILE ARE THE PROPERTY OF ASSOCIATED DESIGN PARTNERS, INC. THE REPRODUCTION, COPYING OR ANY OTHER USE OF THIS DOCUMENT WITHOUT WRITTEN CONSENT IS PROHIBITED.

**PROJECT: BARBER FOODS RENOVATIONS**  
**54-70 SAINT JOHN ST, PORTLAND ME**  
 FOR: BARBER FOODS INC.  
**SHEET TITLE: DOOR, WINDOW, AND ADA DETAILS ISSUED FOR PERMITTING**

NO.	BY	DATE	REVISIONS DESCRIPTION
1			
2			
3			
4			

DATE: 10-29-08  
 SCALE: AS NOTED  
 DESIGN BY: ASW  
 DRAWN BY: RC  
 FILE #: 08170-A401.DWG  
 PROJECT NUMBER:  
**08170**  
 SHEET NO:  
**A601**