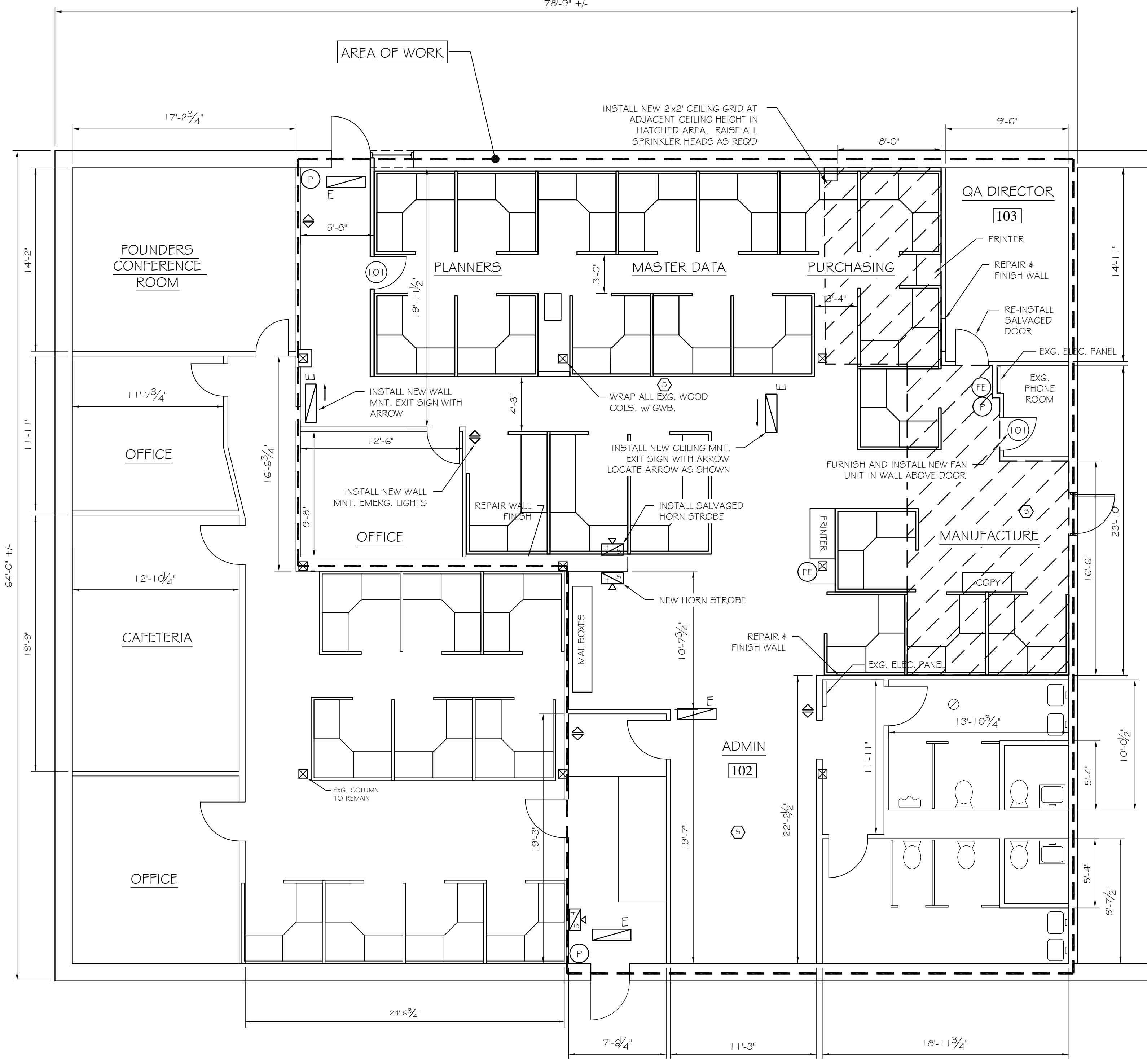


NOTES:
1. INSTALL NEW 2'x2' CEILING TILES THROUGHOUT ADMIN AREA (APPROX. 4700 SF). PAINT ALL EXG. CEILING GRID FRAMES TO REMAIN.

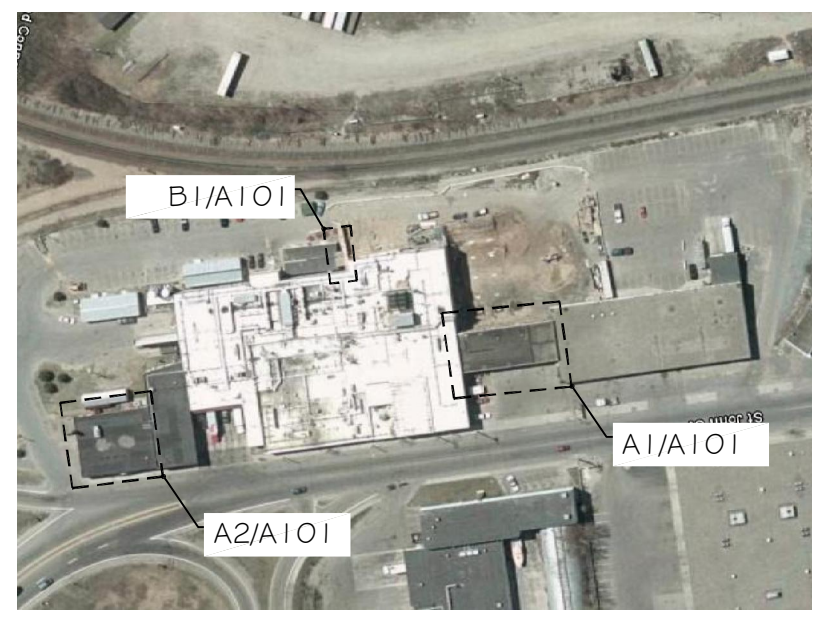
78'-9" +/-



NFPA LEGEND

	EMERGENCY LIGHT
	EXIT LIGHT
	10# ABC FIRE EXTINGUISHER w/ BRACKET
	KNOX BOX
	MANUAL PULL STATION
	NOT AN EXIT SIGN
	SMOKE DETECTOR
	HORN STROBE UNIT (110ab / 110cd)
	STROBE UNIT (115cd)
	FIRE ALARM CONTROL PANEL

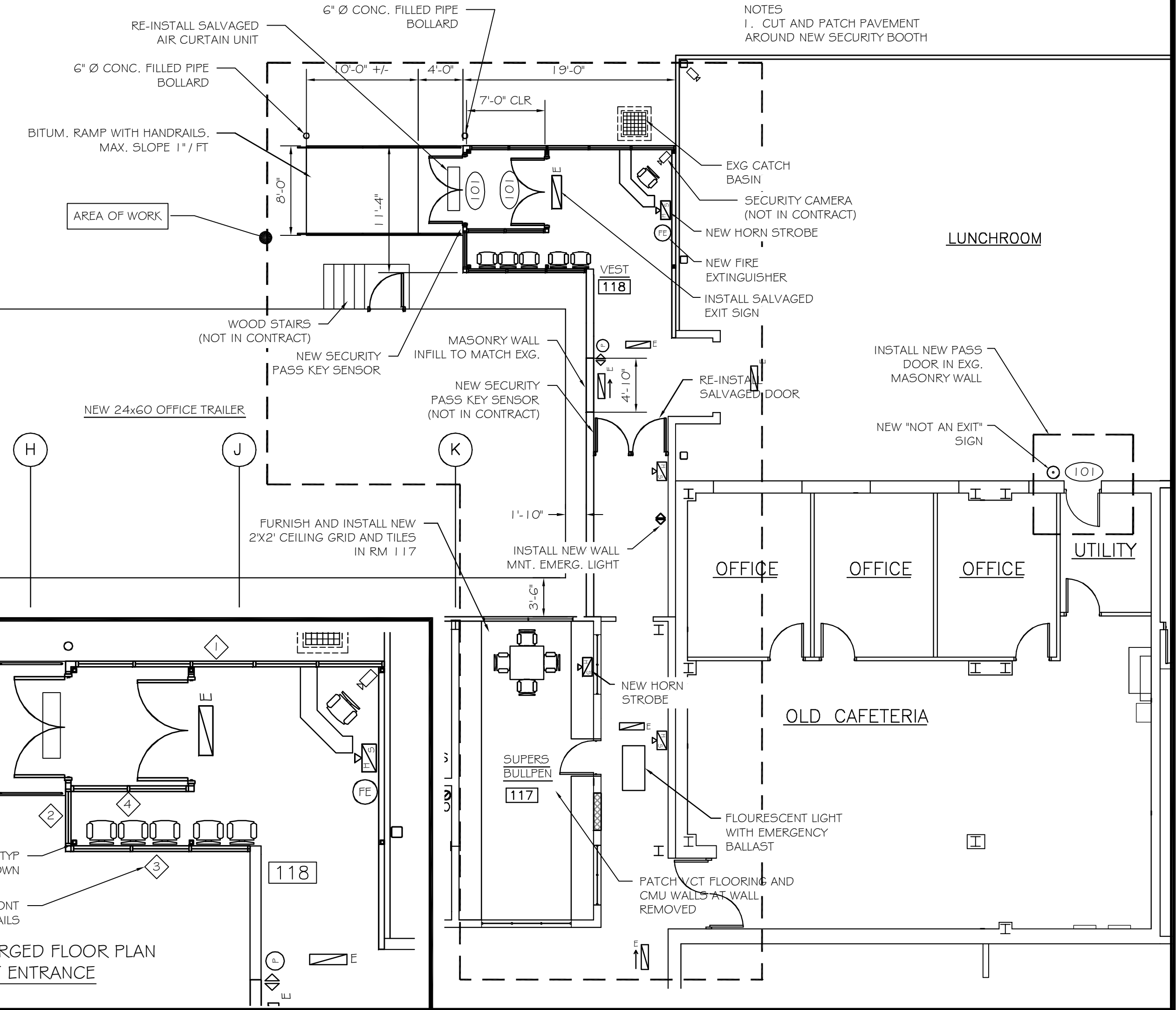
NOTES:
1. KNOX BOX AND FACP ARE LOCATED AT THE 70 SAINT JOHN ST. ENTRANCE (NO WORK IN THIS AREA).
2. ALL NEW AND RELOCATED FIRE ALARM COMPONENTS MUST BE FULLY COMPATIBLE AND INTEGRATED INTO THE EXISTING FUNCTIONING SYSTEM PER NFPA 101-2006 LIFE SAFETY CODE AND THE CITY OF PORTLAND CODE ENFORCEMENT / FIRE SAFETY AUTHORITY.



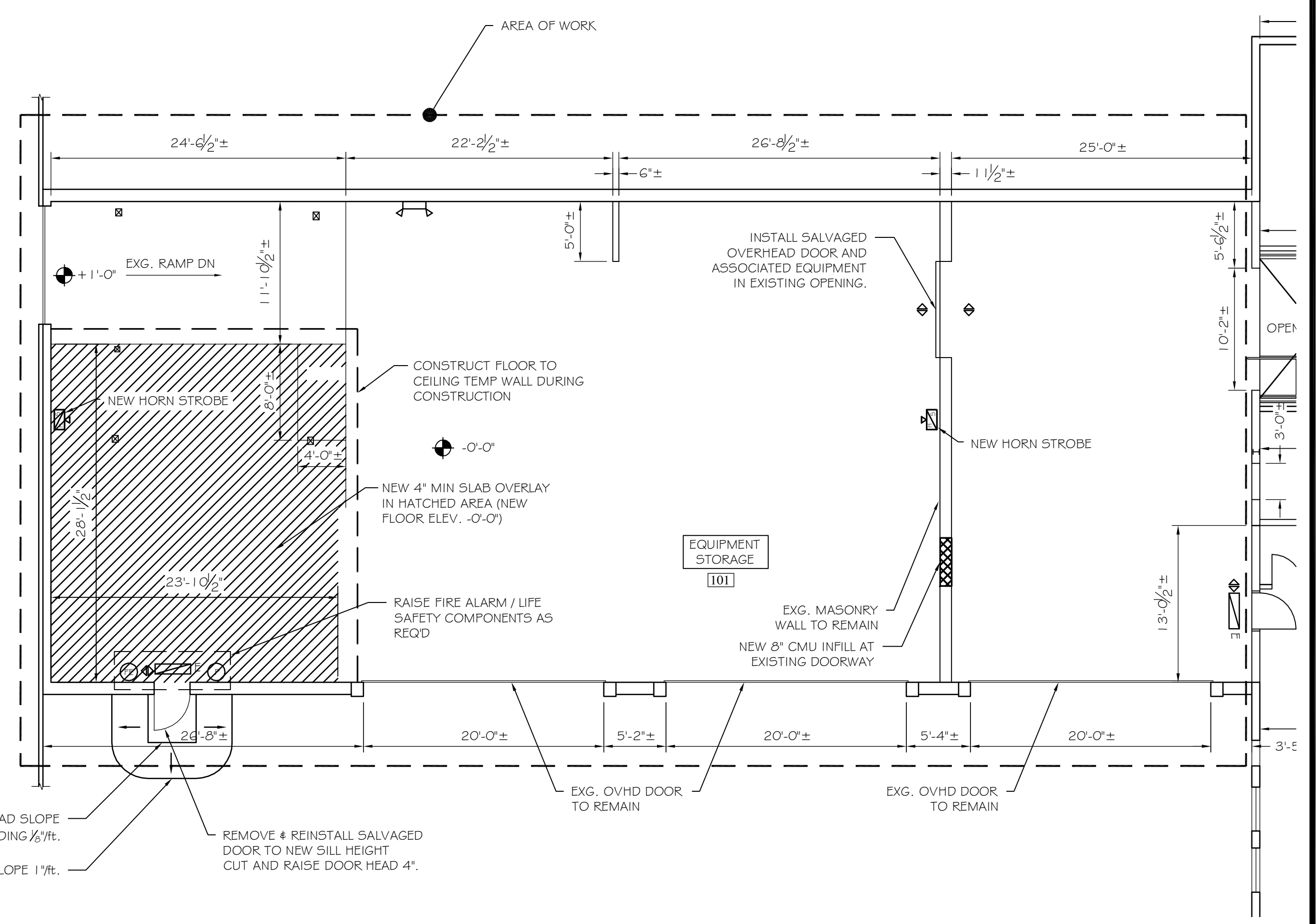
PLANT KEY

A2

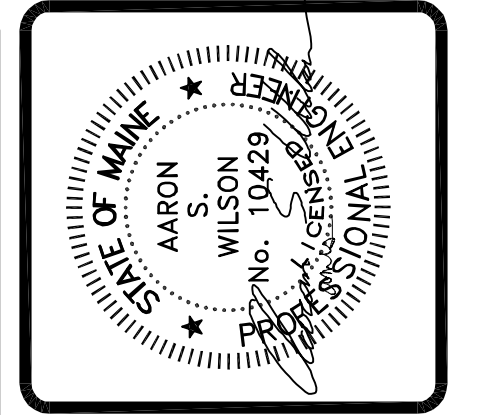
FLOOR PLAN - 54 ST. JOHN ST. ADMINISTRATIVE OFFICE
SCALE: 3/8" = 1'-0"



B1 FLOOR PLAN - PLANT WEST ENTRANCE
SCALE: 3/8" = 1'-0"



A1 FLOOR PLAN - EQUIPMENT STORAGE
SCALE: 3/8" = 1'-0"



ASSOCIATED DESIGN PARTNERS INC.
Office: (207) 878-1751
80 Leighton Road, Falmouth, Maine 04105
Fax: (207) 878-1788
E-Mail: adp@adpengineering.com

THIS DRAWING, DESIGN AND ELECTRONIC FILE ARE THE PROPERTY OF ASSOCIATED DESIGN PARTNERS, INC. THE REPRODUCTION, COPYING OR ANY OTHER USE OF THIS DOCUMENT WITHOUT WRITTEN CONSENT IS PROHIBITED.

PROJECT: BARBER FOODS RENOVATIONS
54-70 SAINT JOHN ST, PORTLAND ME
FOR: BARBER FOODS INC.
SHEET TITLE: PARTIAL FLOOR PLANS ISSUED FOR PERMITTING

NO.	BY	DATE	DESCRIPTION

DATE : 10-29-08
SCALE : AS NOTED
DESIGN BY: ASW
DRAWN BY: RC
PROJECT NUMBER:
08170
SHEET NO:
A101