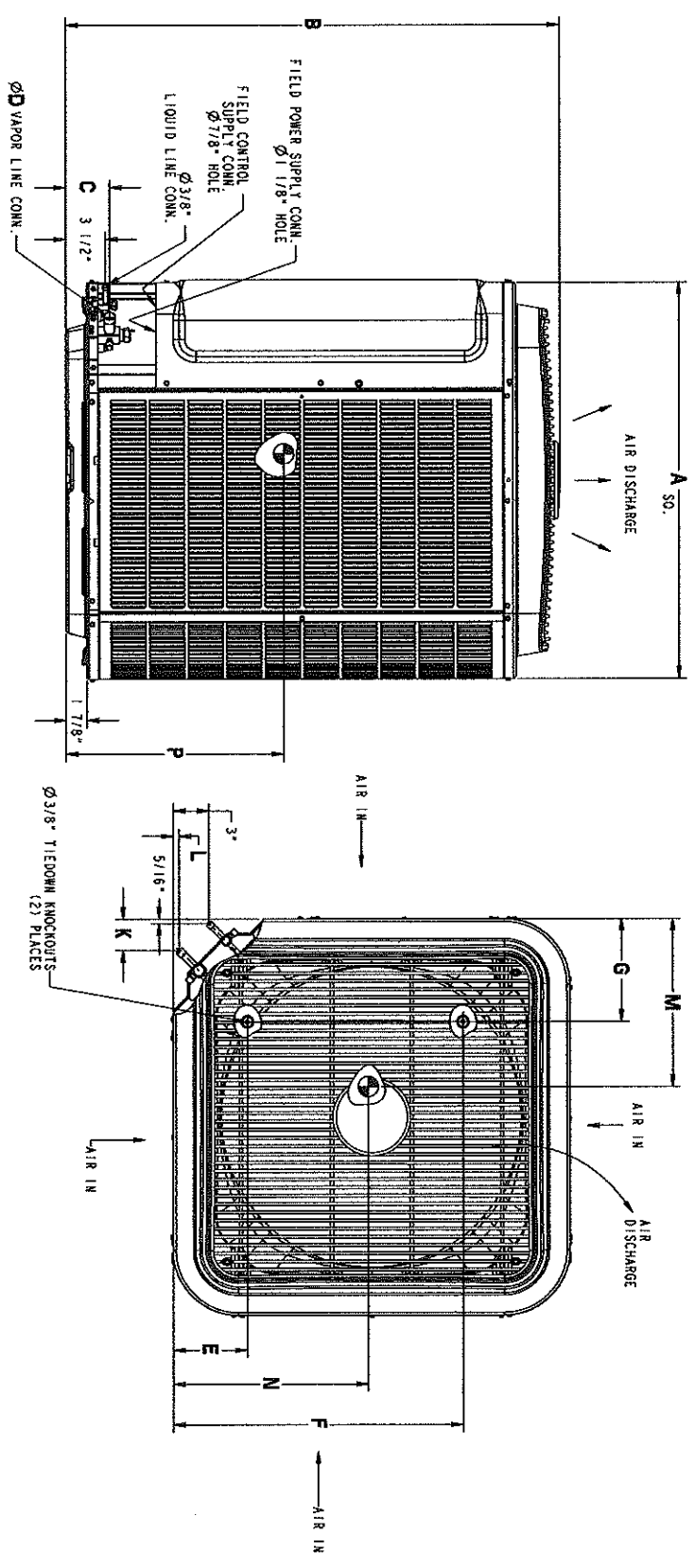


DIMENSIONS - ENGLISH

UNIT	SERIES	ELECTRICAL CHARACTERISTICS	A	B	C	D	E	F	G	K	L	M	N	P	OPERATING WEIGHT (lbs)	SHIPPING WEIGHT (lbs)	SHIPPING DIMENSIONS (L x W x H)
280A024	A	X 0 0 0	35"	43 11/16"	3 7/8"	7/8"	6 9/16"	28 7/16"	9 1/8"	2 15/16"	5/8"	16 1/4"	16 1/4"	21 1/4"	324	367	36 1/8" x 39 1/4" x 50 3/16"
280A036	A	X 0 0 0	35"	43 11/16"	3 7/8"	7/8"	6 9/16"	28 7/16"	9 1/8"	2 15/16"	5/8"	16 1/4"	16 1/4"	21 1/4"	324	367	36 1/8" x 39 1/4" x 50 3/16"
280A048	A	X 0 0 0	35"	43 11/16"	3 7/8"	7/8"	6 9/16"	28 7/16"	9 1/8"	2 15/16"	5/8"	16 1/4"	16 1/4"	21 1/4"	334	375	36 1/8" x 39 1/4" x 50 3/16"
280A060	A	X 0 0 0	35"	43 11/16"	3 7/8"	7/8"	6 9/16"	28 7/16"	9 1/8"	2 15/16"	5/8"	16 1/4"	16 1/4"	21 1/4"	334	375	36 1/8" x 39 1/4" x 50 3/16"

208/230-160	230-160	208/230-3-60	460-3-60
-------------	---------	--------------	----------

X = YES
O = NO



UNIT SIZE	MINIMUM MOUNTING PAD DIMENSIONS
24, 36, 48, 60	31 1/2" x 31 1/2"
	35" x 35"