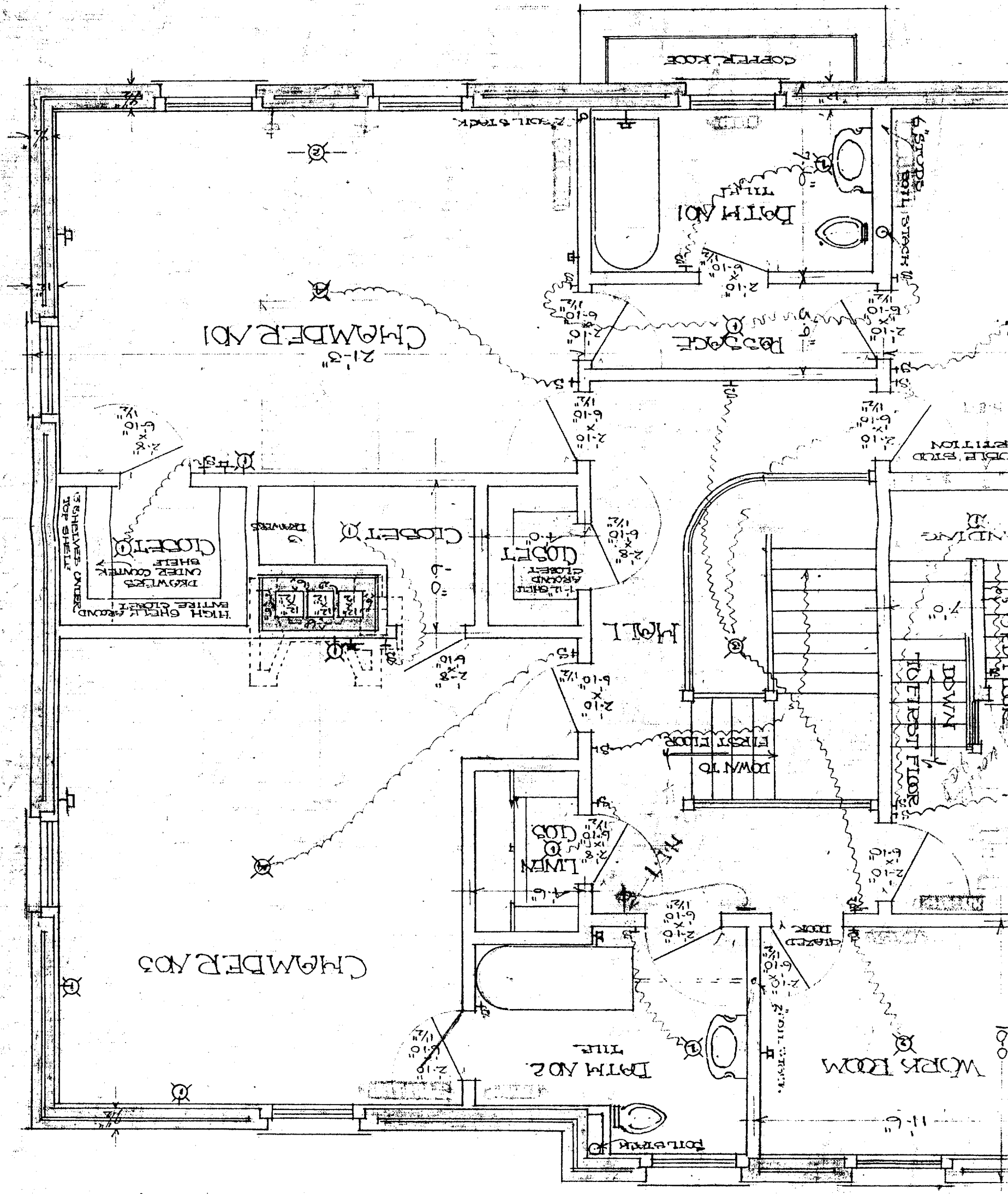


NO PUBLICATION  
MATERIAL MAY BE  
REPRODUCED WITHOUT THE CON-

# SECOND FLOOR

E.C.W. JULY 1911

JOHN TOWN & STEVENS  
JOHN TOWN & STEVENS  
ARCHITECTS



100

RESIDENCE  
FOR MR. A. C. BROWN  
35 WASHINGTON ST.  
PORTLAND, ME.

