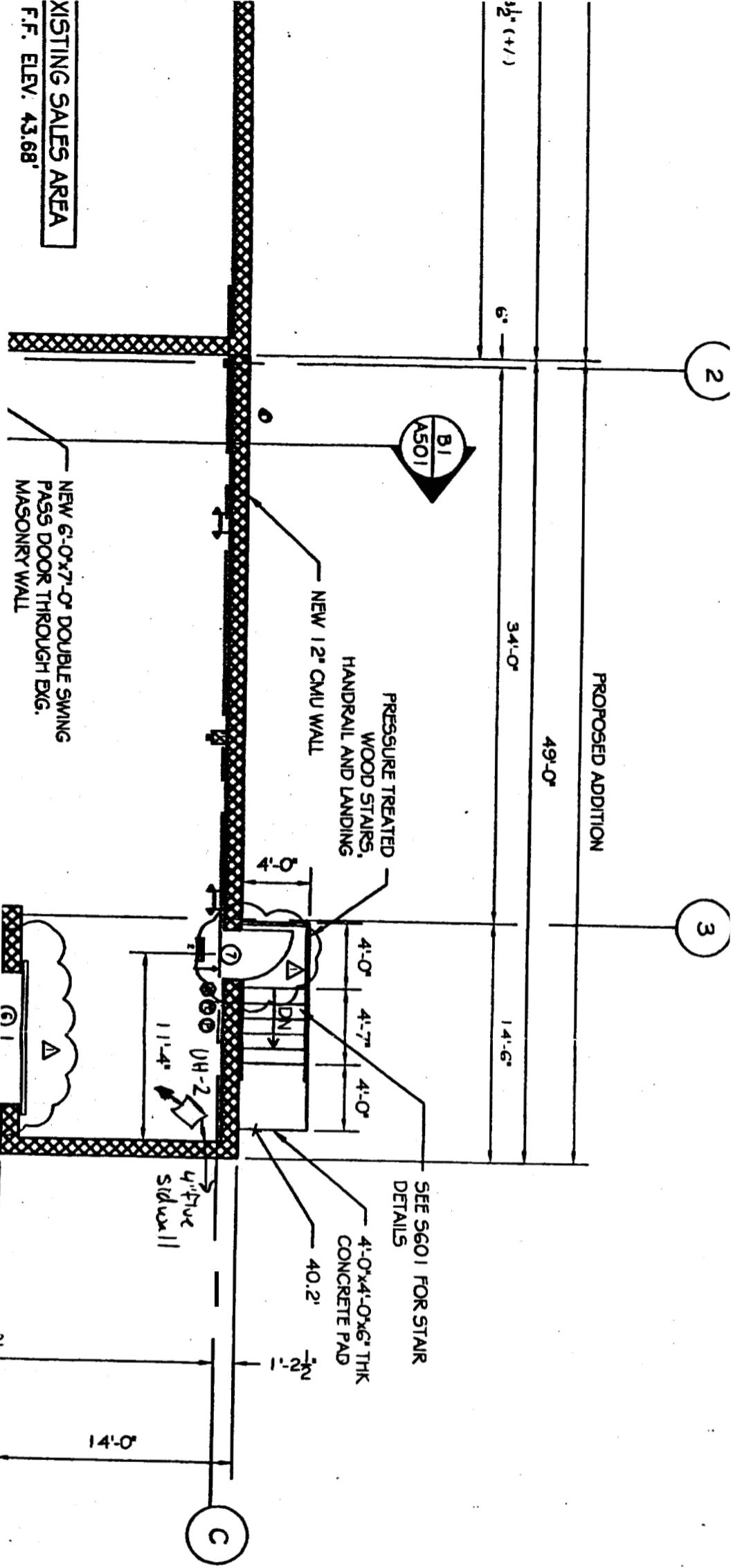


EXISTING SALES AREA  
F.F. ELEV. 43.68'



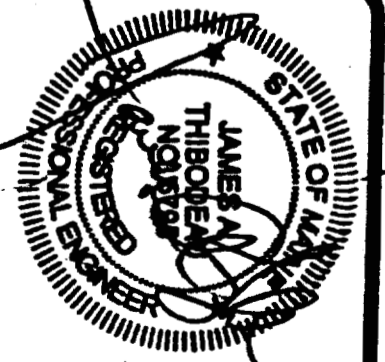
THIS DRAWING, DESIGN AND ELECTRONIC FILE ARE THE PROPERTY OF ASSOCIATED DESIGN PARTNERS, INC. THE REPRODUCTION, COPYING OR ANY OTHER USE OF THIS DOCUMENT WITHOUT WRITTEN CONSENT IS PROHIBITED.



# ASSOCIATED DESIGN PARTNERS INC.

80 Leighton Road  
Falmouth, Maine 04105

Office: (207) 878-1751  
Fax: (207) 878-1788  
E-Mail: [adp@adpengineering.com](mailto:adp@adpengineering.com)



PROJECT NORTH

DOOR SCHEDULE

NO.	SIZE (W x H)	THK	TYPE	FR	INCL	HONE	REMARKS	FRAMES		
								MANT	HEAD	JAMB
1	5'-0" x 7'-0"	1 1/2"	H.M.	WA	TH	DOT SET	# 5 LB CLOSER & FLUSH BAR	H.M.		MASONRY
2	5'-0" x 7'-0"	1 1/2"	H.M.	WA	TH	PER MANUFACTURER	OVERHEAD DOOR			MASONRY
3	4'-0" x 7'-0"	1 1/2"	H.M.	WA	TH	PASSAGE LATCH SET	1-HR RATED W/ 5 LB CLOSER	H.M.		MASONRY
4	5'-0" x 7'-0"	1 1/2"	H.M.	WA	TH	PER MANUFACTURER	HEAD DOOR: TYPES	H.M.		MASONRY
5	5'-0" x 7'-0"	1 1/2"	H.M.	WA	TH	DOT SET	2-HR RATED W/ 5 LB CLOSER & FLUSH BAR	H.M.		MASONRY

WINDOW & DOOR NOTES:

EXTERIOR HOLLOW METAL DOORS & FRAMES:

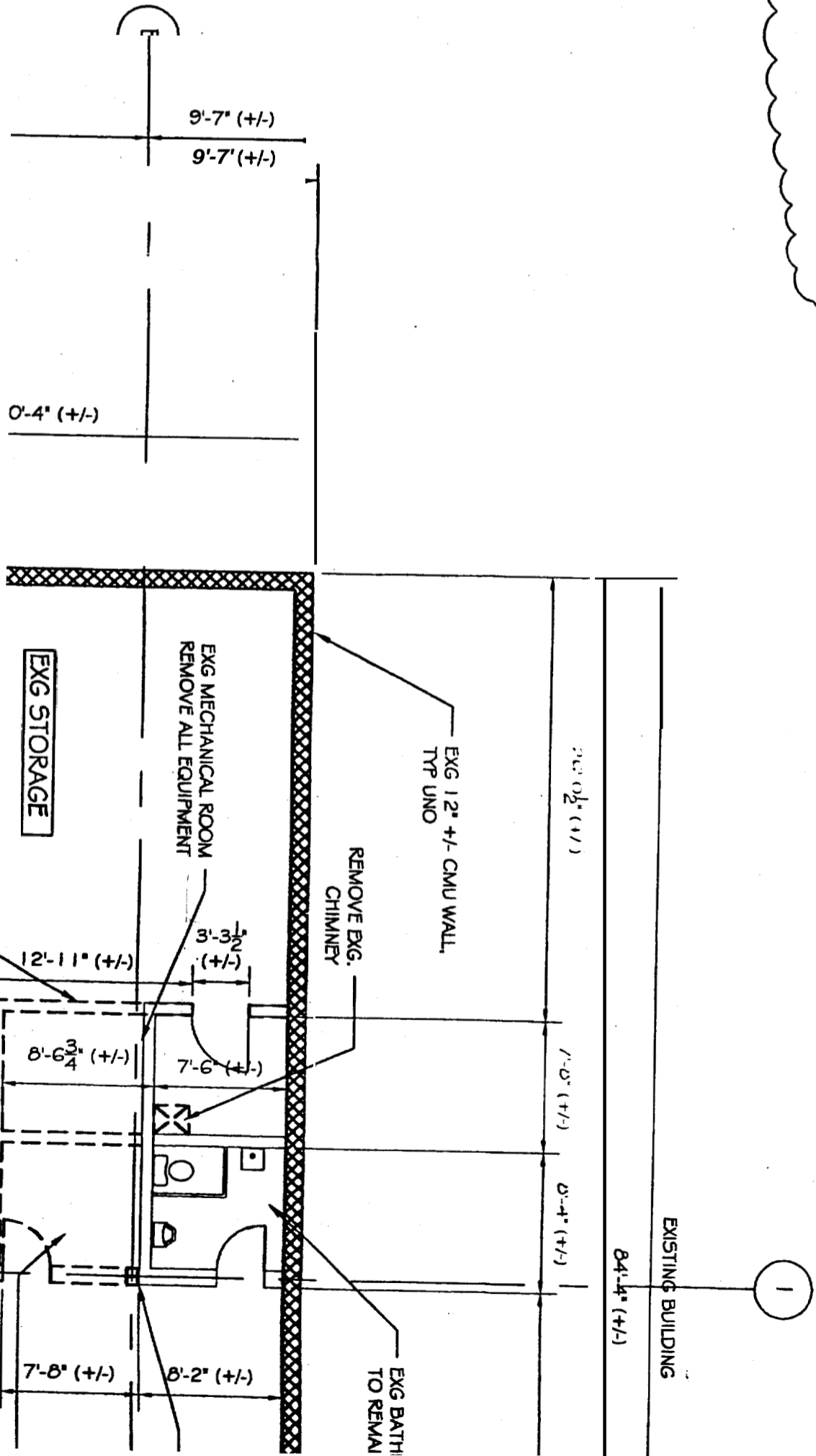
- PROVIDE 1 1/4 GAUGE HOLLOW METAL DOOR FRAME W/ WELDED & GROUND CORNERS.
- PROVIDE 16 GAUGE THERMALLY INSULATED GALVANIZED HOLLOW METAL DOOR AT REAR LOADING DOCK AREA.
- PROVIDE 4 1/2" x 4 1/2" STAINLESS STEEL HINGES.
- PROVIDE AND INSTALL MANUFACTURERS RECOMMENDED ALUMINUM THRESHOLD AND WEATHERSTRIPPING.

INTERIOR HOLLOW METAL DOORS & FRAMES:

- PROVIDE 16 GAUGE HOLLOW METAL DOOR FRAME W/ WELDED & GROUND CORNERS W/ 4" HEAD.
- PROVIDE 16 GAUGE THERMALLY INSULATED GALVANIZED HOLLOW METAL DOOR.
- PROVIDE 4 1/2" x 4 1/2" STAINLESS STEEL HINGES.

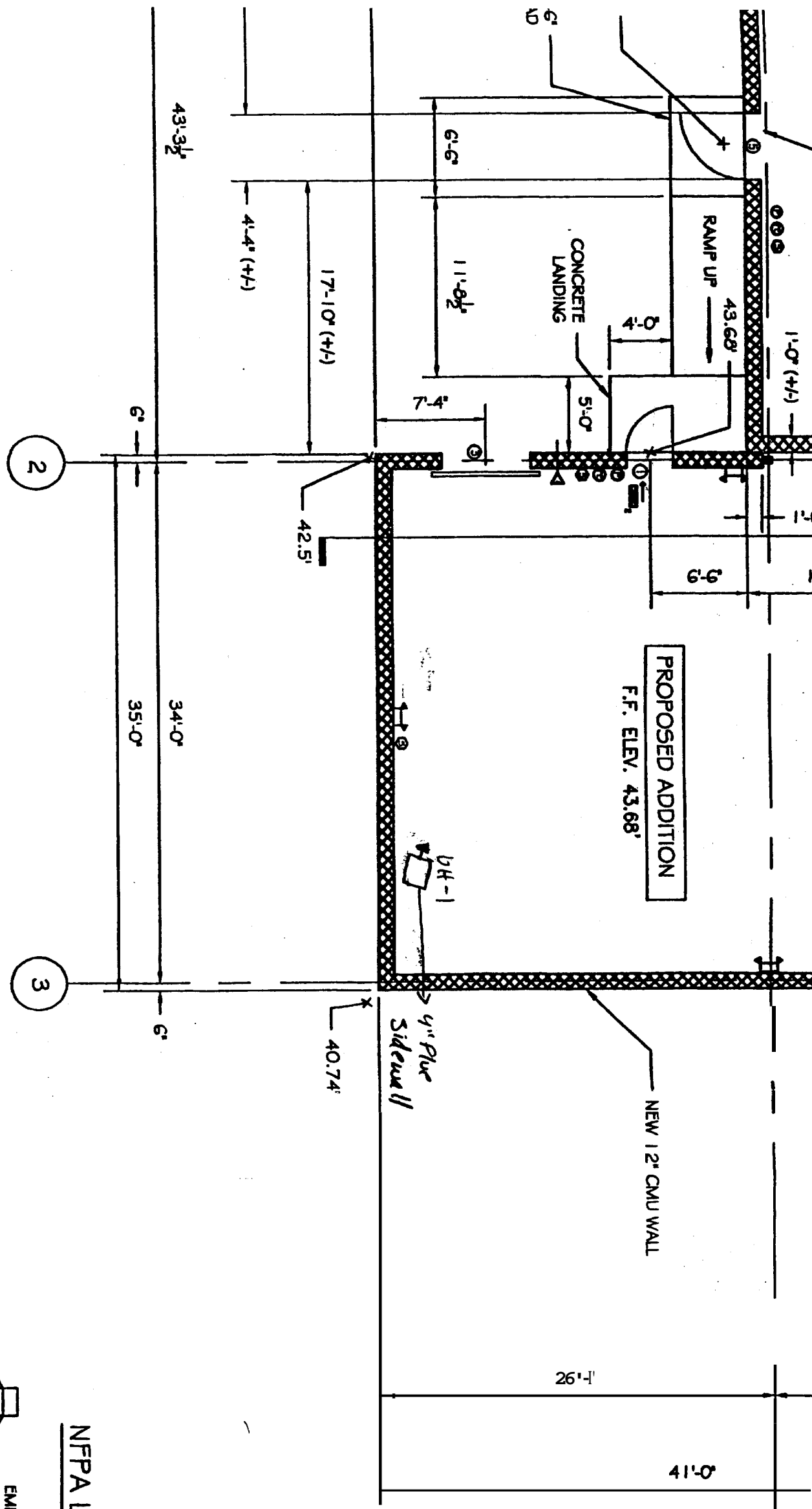
OVERHEAD DOORS:

- FRONT SLAT TO BE 20 GAUGE GALVANIZED STEEL.
- INTERIOR SLAT TO BE 24 GAUGE GALVANIZED STEEL.
- PROVIDE MANUFACTURERS BLANKET FINISH FOR INTERIOR & EXTERIOR SLAG AND HOOD. ALL OTHER STEEL REQUIRED FOR THE PROPER MANGMENT AND INSTALLATION OF THE OVERHEAD DOOR TO BE GALVANIZED.
- PROVIDE GUIDES & TRAYS AS RECOMMENDED BY THE MANUFACTURER.
- PROVIDE ROLLER CORNERS STANDARD COUNTERBALANCE DESIGNED FOR 20,000 CYCLES.
- PROVIDE INTERIOR BOTTOM BAR SLIDE BOLTLOCK & CHAIN KEEPERS.



# ED ADDITION FLOOR PLAN

1'-0"



## NFPA LEGEND

- EMERGENCY LIGHT
- EXIT LIGHT
- 110 CANDELLA HORNSTROBE UNIT
- 110 CANDELLA STROBE UNIT
- ALARM PULL STATION
- 10# ABC FIRE EXTINGUISHER w/ BRACKET
- NOT AN EXIT SIGN
- SMOKE DETECTOR
- 1 HR RATING
- 2 HR RATING

PROJECT: **SID HARVEY A**  
**160 ST JOHN STRE**  
 FOR HARVEY ASSOCIATES

SHEET TITLE:

**FIRST FLO**  
 ISSUED FOR C

REVISIONS		
No.	BY	DESCRIPTION
1	ASW	REVISIONS PER OWNER
2	ASW	GENERAL REVISIONS
3		

DATE : 09-07-2004  
 SCALE : 1/8" = 1'-0"  
 DESIGN BY: ASW  
 DRAWN BY: NRR  
 FILE #: 04100\_A101.DWG  
 PROJECT NUMBER:  
**04100**  
 SHEET NO:  
**A101**

A1 PROPO  
A101 SCALE: 1/8"

