

SID HARVEY ADDITION

160 ST. JOHN STREET PORTLAND, MAINE

48 b cc5

NOV - 10

CODE ANALYSIS SID HARVEY ADDITION 160 ST. JOHN STREET PORTLAND, MAINE

NEPA 101 LIFE SAFETY CODE - 2003 Edition

Building Classification: Mercantile 2000 sf (Chapter 42)
Construction Type: New Type II (000)
Hazard Classification: Low Hazard
Occupant Loads: Mercantile Storage @ 300 sf/occ = 7 "Class C"
Separation of Use Rating: 2 hour (NA)
Janitor, Mech, Stor Rating: 1 hour
Stair Rating: 1 hour (NA)
Elevator Shafts: 2 hour (NA)
Area of Refuge: (NA)
Minimum Stair width: 44"
Maximum Riser height: 7"
Minimum Tread width: 11"
Handrail height: 34"
Handrail top extension: 12" horiz.
Handrail bottom extension: 11" sloped + 12" horiz.
Handrail diameter: 1-1/2" OD
Maximum baluster open space: less than 4"

Building Uses - Mercantile - Ch 42

Max. Allowable Travel Distance: 100'-200' for exit access (150' unsprinkled); Low Hazard
Max. Dead End Corridor Length: 20'
Minimum Egress Corridor Width: 44"
Minimum Number of Required Exits: 1; Low Hazard
Minimum Exit Access Corridor rating: 1 hr
Separation of exits: (NA)
Minimum Egress Door Width: 36"
Exit Lighting: Required
Emergency Lighting: Required
Fire Alarm System: Required
Fire Sprinkler System: Not Required
Portable Fire Extinguishers: Required

G:\2004Proj\04100\Photos\DSC05898.JPG

TABLE OF CONTENTS:

- A101- FIRST FLOOR PLAN
- A301- ROOF PLAN
- A401- ELEVATIONS
- A501- SECTIONS
- A601- ARCHITECTURAL DETAILS
- S101- FOUNDATION PLAN
- S201- ROOF FRAMING PLAN
- S301- FOUNDATION NOTES AND DETAILS
- S302- DETAILS
- S303- NOTES AND SPECIFICATIONS

THIS DRAWING, SPECIFICATIONS AND ALL INFORMATION CONTAINED HEREIN ARE THE PROPERTY OF ASSOCIATED DESIGN PARTNERS, INC. AND ARE TO BE USED ONLY FOR THE PROJECT AND SITE SPECIFICALLY IDENTIFIED HEREIN. ANY OTHER USE OF THIS DOCUMENT WITHOUT WRITTEN CONSENT IS PROHIBITED.

ASSOCIATED DESIGN PARTNERS INC.

80 Leighton Road
Falmouth, Maine 04105
Office: (207) 878-1751
Fax: (207) 878-1788
E-Mail: adp@adpengineering.com

SID HARVEY ADDITION

160 ST. JOHN STREET PORTLAND, MAINE

CODE ANALYSIS
SID HARVEY ADDITION
160 ST. JOHN STREET
PORTLAND, MAINE

IFPPA 101 LIFE SAFETY CODE - 2003 Edition

Building Classification: Me.,000 sf (Chapter 42)
 Construction Type: New Type II (000)
 Hazard Classification: Low Hazard
 Occupant Loads: Mercantile Storage @ 300 sf/occ = 7 "Class C"
 Separation of Use Rating: 2 hour (NA)
 Janitor, Mech, Stor Rating: 1 hour
 Stair Rating: 1 hour (NA)
 Elevator Shafts: 2 hour (NA)
 Area of Refuge: (NA)
 Minimum Stair width: 44"
 Maximum Riser height: 7"
 Minimum Tread width: 11"
 Handrail height: 34"
 Handrail top extension: 12" horz.
 Handrail bottom extension: 11" sloped + 12" horz.
 Handrail diameter: 1-1/2" OD
 Maximum balluster open space: less than 4"

Building Uses Mercantile - Ch 42

Max. Allowable Travel Distance: 100'-200' for exit access (150' unspinkled); Low Hazard
 Max. Dead End Corridor Length: 20'
 Minimum Egress Corridor Width: 44"
 Minimum Number of Required Exits 1; Low Hazard
 Minimum Exit Access Corridor rating: 1 hr
 Separation of exits: (NA)
 Minimum Egress Door Width: 36"
 Exit Lighting: Required
 Emergency Lighting: Required
 Fire Alarm System: Required
 Fire Sprinkler System: Not Required
 Portable Fire Extinguishers: Required



TABLE OF CONTENTS:

- A101- FIRST FLOOR PLAN
- A301- ROOF PLAN
- A401- ELEVATIONS
- A501- SECTIONS
- A601- ARCHITECTURAL DETAILS
- S101- FOUNDATION PLAN
- S201- ROOF FRAMING PLAN
- S301- FOUNDATION NOTES AND DETAILS
- S302- DETAILS
- S303- NOTES AND SPECIFICATIONS

CE b CCS

001

THIS DOCUMENT, DESIGN AND CONSTRUCTION OF ASSOCIATED DESIGN PARTNERS, INC. IS THE PROPERTY OF ASSOCIATED DESIGN PARTNERS, INC. AND IS NOT TO BE REPRODUCED OR TRANSMITTED IN ANY FORM OR BY ANY MEANS, WITHOUT THE WRITTEN CONSENT OF ASSOCIATED DESIGN PARTNERS, INC.

ASSOCIATED DESIGN PARTNERS INC.

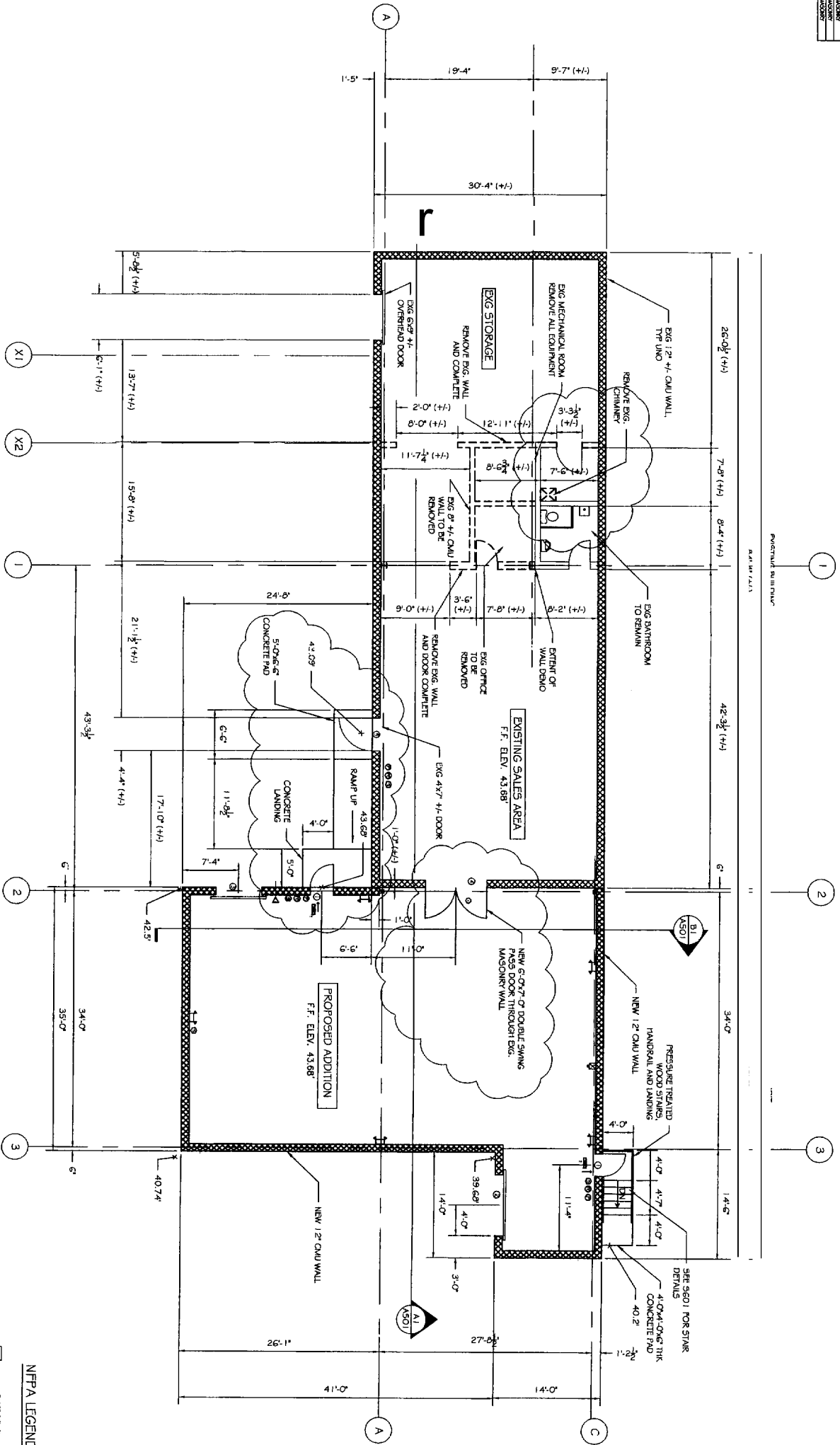
80 Leighton Road
 Falmouth, Maine 04105

Office: (207) 878-1751
 Fax: (207) 878-1788
 E-Mail: adp@adpengineering.com



DOORS		FRAMES	
NO.	TYPE	NO.	TYPE
01	1 1/2" x 6' 0" HOLLOW METAL	01	1 1/2" x 6' 0" HOLLOW METAL
02	1 1/2" x 6' 0" HOLLOW METAL	02	1 1/2" x 6' 0" HOLLOW METAL
03	1 1/2" x 6' 0" HOLLOW METAL	03	1 1/2" x 6' 0" HOLLOW METAL
04	1 1/2" x 6' 0" HOLLOW METAL	04	1 1/2" x 6' 0" HOLLOW METAL
05	1 1/2" x 6' 0" HOLLOW METAL	05	1 1/2" x 6' 0" HOLLOW METAL
06	1 1/2" x 6' 0" HOLLOW METAL	06	1 1/2" x 6' 0" HOLLOW METAL
07	1 1/2" x 6' 0" HOLLOW METAL	07	1 1/2" x 6' 0" HOLLOW METAL
08	1 1/2" x 6' 0" HOLLOW METAL	08	1 1/2" x 6' 0" HOLLOW METAL
09	1 1/2" x 6' 0" HOLLOW METAL	09	1 1/2" x 6' 0" HOLLOW METAL
10	1 1/2" x 6' 0" HOLLOW METAL	10	1 1/2" x 6' 0" HOLLOW METAL

- WINDOW & DOOR NOTES:**
- EXTERIOR HOLLOW METAL DOORS & FRAMES:
 - PROVIDE 1 1/2" GAUGE HOLLOW METAL DOOR FRAME W/ WELDED 4" GROUND CORNERS.
 - PROVIDE 1 1/2" GAUGE THERMALLY INSULATED GALVANIZED HOLLOW METAL DOOR AT REAR LOADING DOOR AREA.
 - PROVIDE 1 1/2" GAUGE THERMALLY INSULATED GALVANIZED HOLLOW METAL DOOR AT REAR LOADING DOOR AREA.
 - PROVIDE AND INSTALL MANUFACTURERS RECOMMENDED ALUMINUM THRESHOLD AND WEATHERstripping.
 - INTERIOR HOLLOW METAL DOORS & FRAMES:
 - PROVIDE 1 1/2" GAUGE HOLLOW METAL DOOR FRAME W/ WELDED 4" GROUND CORNERS W/ 2" TYPICAL.
 - PROVIDE 1 1/2" GAUGE THERMALLY INSULATED GALVANIZED HOLLOW METAL DOOR.
 - PROVIDE 4" 1/2" x 1/2" STAINLESS STEEL HINGES.
 - OVERHEAD DOORS:
 - FRONT SLAT TO BE 24 GAUGE GALVANIZED STEEL.
 - INTERIOR SLAT TO BE 24 GAUGE GALVANIZED STEEL.
 - PROVIDE MANUFACTURERS STANDARD FINISH FOR INTERIOR & EXTERIOR SLATS AND HOOD. ALL OTHER STEEL REQUIRED FOR OVERHEAD DOOR TO BE GALVANIZED.
 - PROVIDE GUIDES & TRACKS AS RECOMMENDED BY THE MANUFACTURER.
 - PROVIDE MANUFACTURERS STANDARD COUNTERBALANCE SYSTEM.
 - PROVIDE 2000 LB. CAPACITY LIFT.
 - PROVIDE INTERIOR BOTTOM BRASS SIDE BOLTLINK & CHAIN FEPPER LOCKS.



A1 PROPOSED ADDITION FLOOR PLAN
SCALE: 1/8" = 1'-0"

- NFPA LEGEND**
- EMERGENCY LIGHT
 - EXIT LIGHT
 - 1 1/2" GASOLINE 1 1/2" 20 HORNS/STROBE LIGHT
 - 1 1/2" GASOLINE 1 1/2" 20 ALARM TELL STATION
 - 1 1/2" GASOLINE 1 1/2" 20 W/ BATTERY
 - SMOKE DETECTOR
 - NOT AN EXIT SIGN
 - 2 HR RATING

NO.	BY	DESCRIPTION	DATE
1	ASW	REVISIONS PER OWNER	

PROJECT: SID HARVEY ADDITION
160 ST JOHN STREET
FOR: HARVEY ASSOCIATES

SHEET TITLE:
FIRST FLOOR PLAN
ISSUED FOR CONSTRUCTION

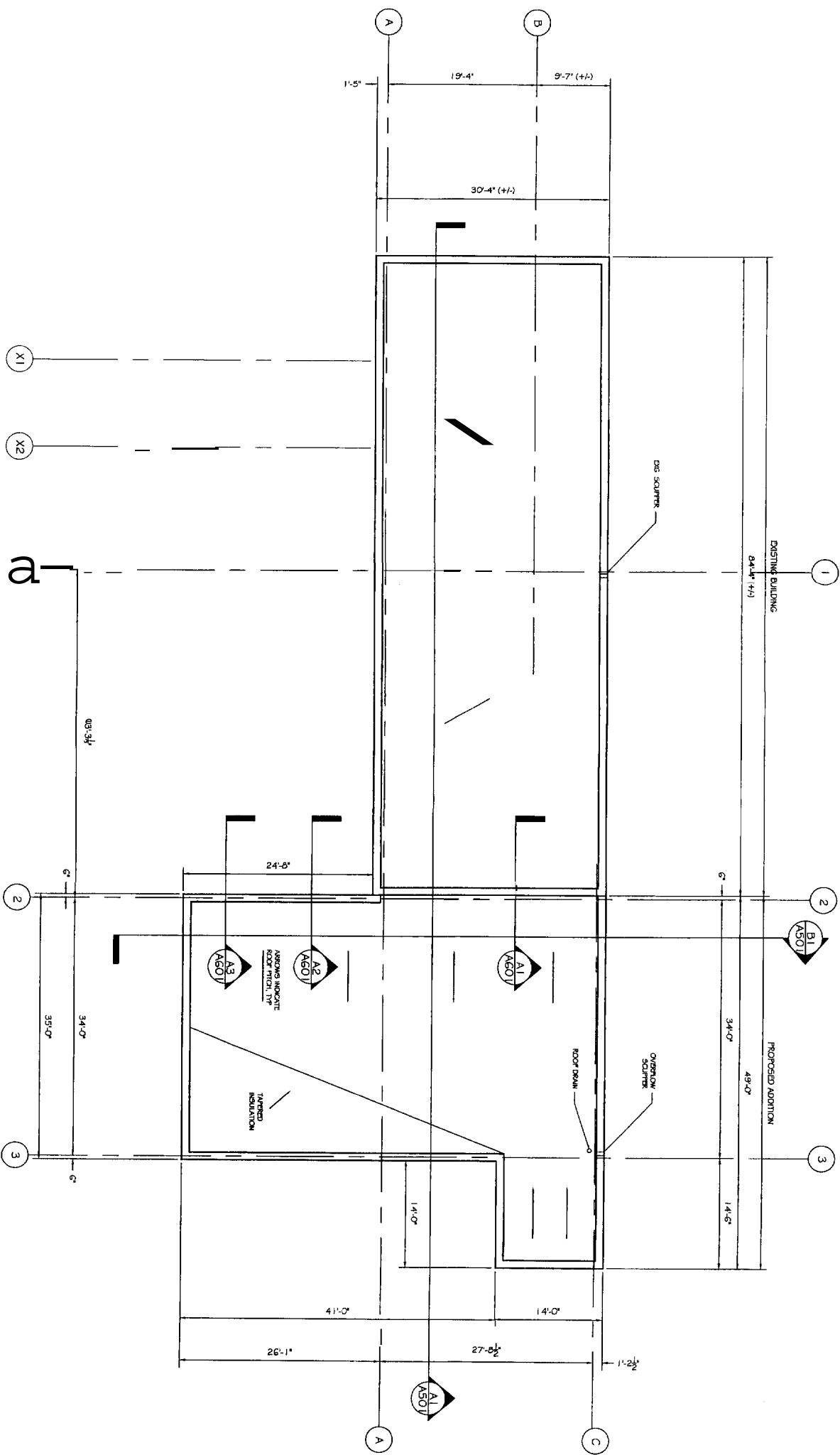
THIS DRAWING, DESIGN AND SPECIFICATIONS ARE THE PROPERTY OF ASSOCIATED DESIGN PARTNERS INC. NO PART OF THIS DRAWING OR SPECIFICATIONS MAY BE REPRODUCED, COPIED OR ANY MANNER WITHOUT THE WRITTEN CONSENT OF ASSOCIATED DESIGN PARTNERS INC.

ASSOCIATED DESIGN PARTNERS INC.

80 Leighton Road Falmouth, Maine 04105
Office: (207) 878-1751
Fax: (207) 878-1788
E-Mail: adp00dengineering.com



DATE: 08-07-2004
SCALE: 1/8" = 1'-0"
DESIGN BY: ASW
DRAWN BY: NRP
FILE # 04100.A101.DWG
PROJECT NUMBER:
04100
SHEET NO:
A101



A1 PROPOSED ROOF PLAN
 SCALE: 1/8" = 1'-0"

REVISIONS		
No.	BY	DESCRIPTION

PROJECT: **SD HARVEY ADDITION**
160 ST. JOHN ST
 FOR: HARVEY ASSOCIATES

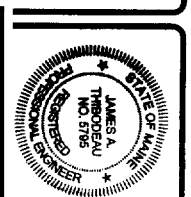
SHEET TITLE:
ROOF PLAN
ISSUED FOR CONSTRUCTION

THIS DOCUMENT IS THE PROPERTY OF ASSOCIATED DESIGN PARTNERS, INC. NO PART OF THIS DOCUMENT SHALL BE REPRODUCED OR TRANSMITTED IN ANY FORM OR BY ANY MEANS, ELECTRONIC OR MECHANICAL, WITHOUT PERMISSION IN WRITING FROM ASSOCIATED DESIGN PARTNERS, INC.

ASSOCIATED DESIGN PARTNERS INC.

80 Leighton Road
 Falmouth, Maine 04105

Office: (207) 878-1751
 Fax: (207) 878-1788
 E-Mail: adp0adpengineering.com

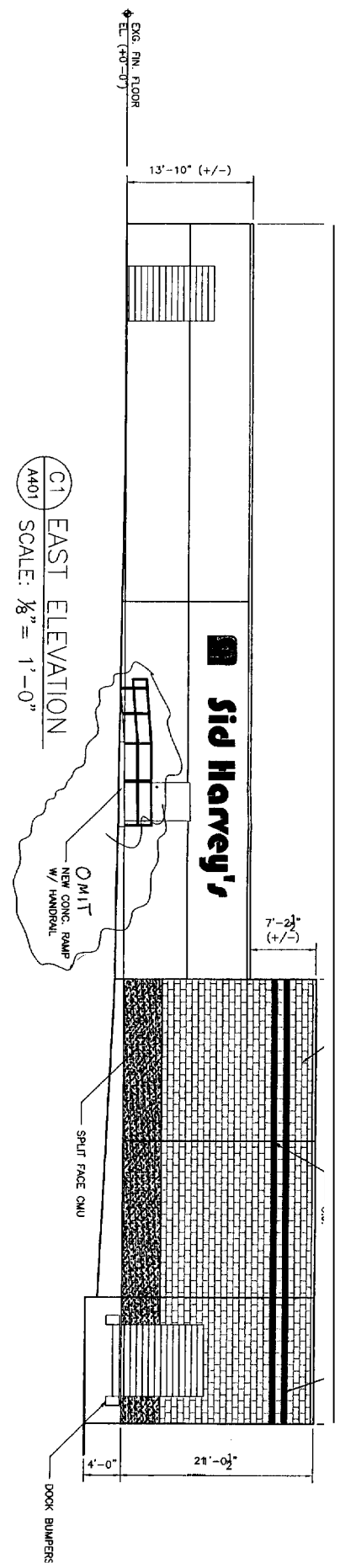


DATE: 09-07-2004
 SCALE: AS NOTED
 DESIGN BY: ASW
 DRAWN BY: NR
 FILE # 04100_2301.DWG
 PROJECT NUMBER:
04100
 SHEET NO.:
A301

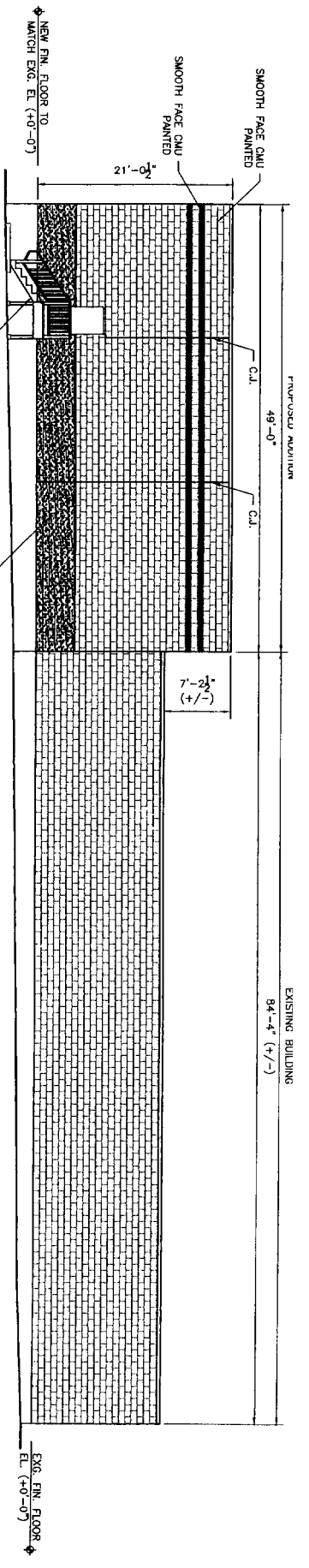
EXISTING BUILDING
84'-4" (+/-)

SMOOTH FACE CMU PAINTED

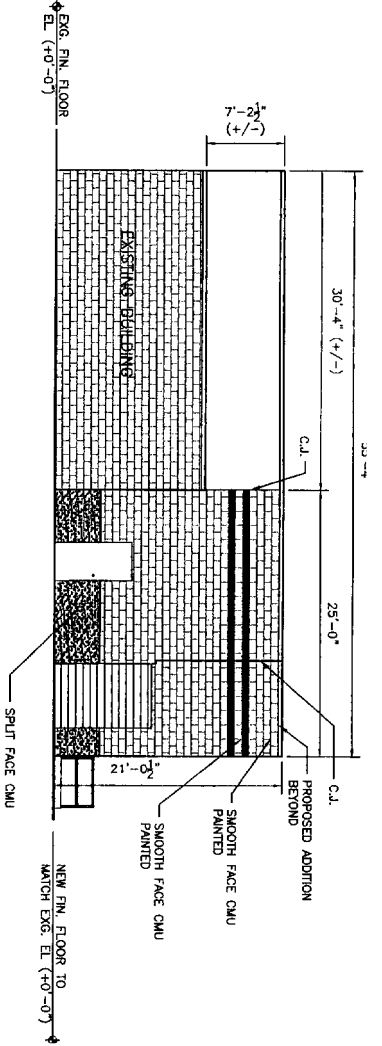
SMOOTH FACE CMU PAINTED



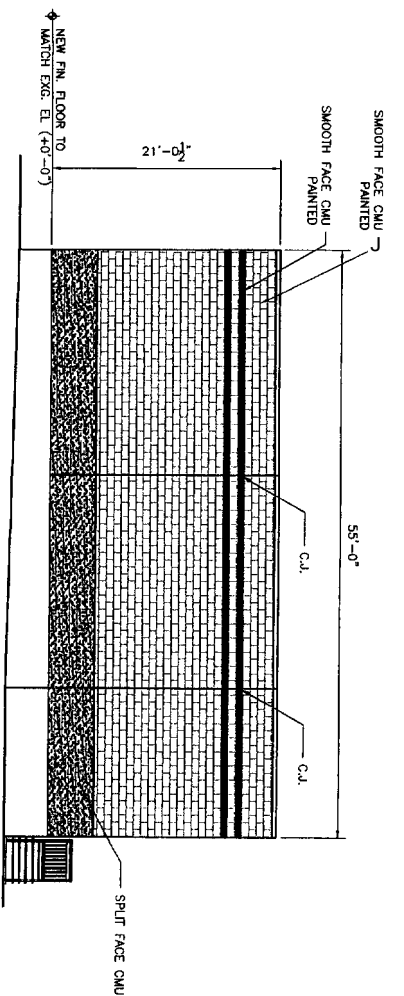
C1 EAST ELEVATION
A401 SCALE: 1/8" = 1'-0"



B1 WEST ELEVATION
A401 SCALE: 1/8" = 1'-0"



A2 SOUTH ELEVATION
A401 SCALE: 1/8" = 1'-0"



A1 NORTH ELEVATION
A401 SCALE: 1/8" = 1'-0"

REVISIONS		
No.	BY	DESCRIPTION

PROJECT: **SID HARVEY ADDITION**
160 ST JOHN STREET
FOR HARVEY ASSOCIATES

SHEET TITLE:
ELEVATIONS
ISSUED FOR CONSTRUCTION

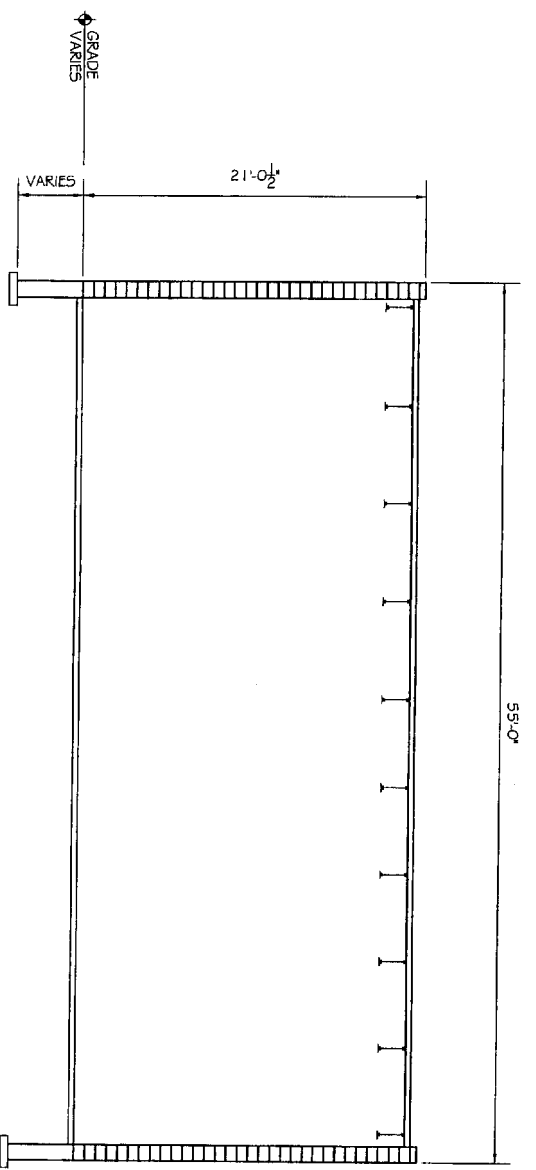
THIS DRAWING, SPECIFICATIONS AND SCHEDULES ARE THE PROPERTY OF ASSOCIATED DESIGN PARTNERS, INC. NO PART OF THIS DRAWING OR ANY WRITTEN CONTENT THEREOF IS TO BE REPRODUCED OR TRANSMITTED IN ANY FORM OR BY ANY MEANS WITHOUT THE WRITTEN CONSENT OF ASSOCIATED DESIGN PARTNERS, INC.

ASSOCIATED DESIGN PARTNERS INC.

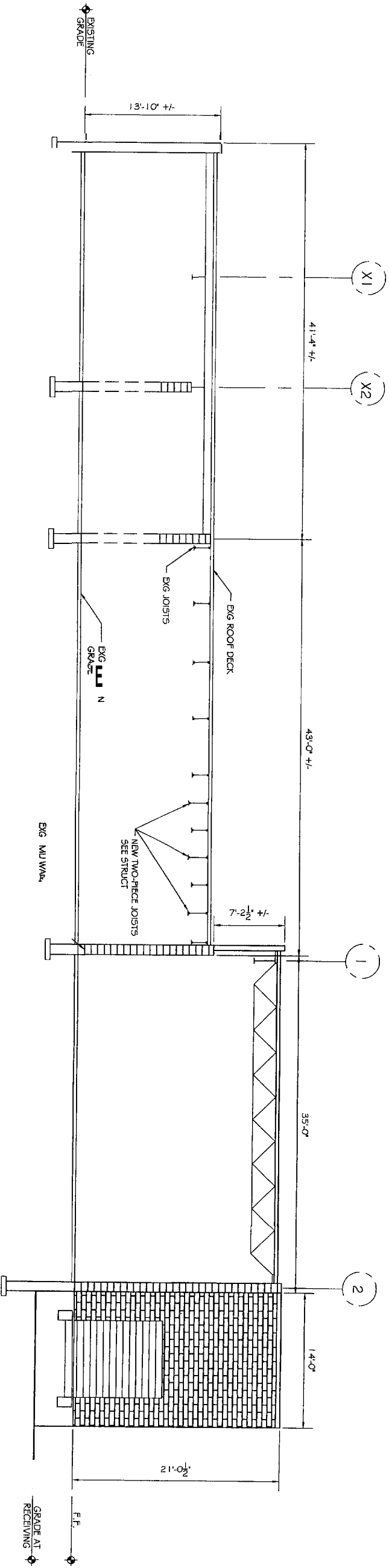
80 Leighton Road
Falmouth, Maine 04105

Office: (207) 878-1751
Fax: (207) 878-1788
E-Mail: adp@adpengineering.com

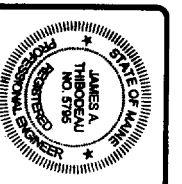




B1 SECTION THROUGH PROPOSED ADDITION
A101 SCALE: 3/8" = 1'-0"



A1 SECTION THROUGH EXG. BLDG. & PARTITION
A101 SCALE: 3/8" = 1'-0"



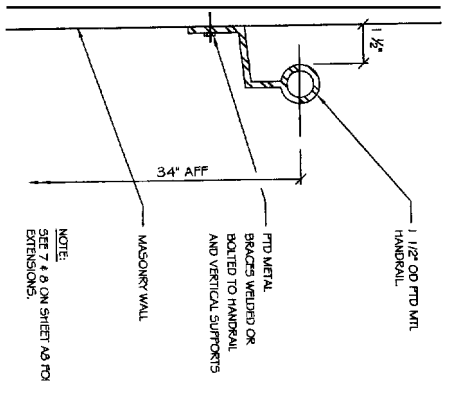
ASSOCIATED DESIGN PARTNERS INC.
 80 Leighton Road Office: (207) 878-1751
 Falmouth, Maine 04105 Fax: (207) 878-1788
 E-Mail: adp@adpengineering.com

THIS DRAWING, DESIGN AND SPECIFICATIONS ARE THE PROPERTY OF ASSOCIATED DESIGN PARTNERS INC. AND ARE NOT TO BE REPRODUCED OR TRANSMITTED IN ANY FORM OR BY ANY MEANS, ELECTRONIC OR MECHANICAL, WITHOUT THE WRITTEN PERMISSION OF ASSOCIATED DESIGN PARTNERS INC.

PROJECT: **SID HARVEY ADDITION**
160 ST. JOHN ST
 FOR HARVEY ASSOCIATES
 SHEET TITLE: **BUILDING SECTIONS**
ISSUED FOR CONSTRUCTION

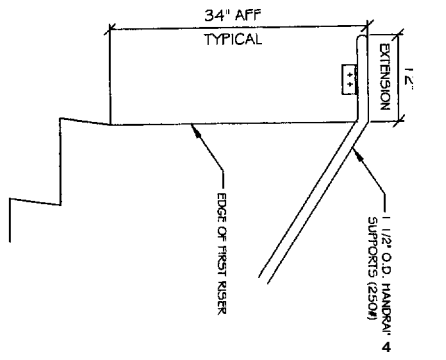
REVISIONS		
No.	BY	DATE

DATE: 09-07-2004
 SCALE: AS NOTED
 DESIGN BY: ASW
 DRAWN BY: NLR
 FILE # 04100_A501.DWG
 PROJECT NUMBER:
04100
 SHEET NO.:
A501

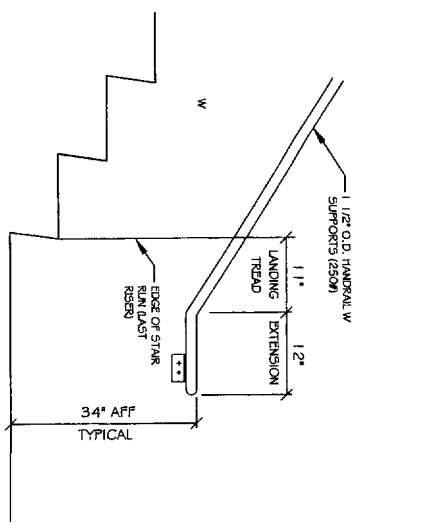


C4 HANDRAIL @ EXTERIOR WALL
NTS

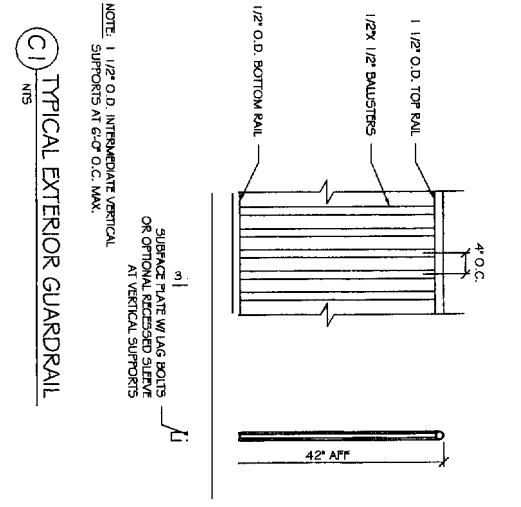
NOTE:
SEE 7 & 8 ON SHEET A3 P3
EXTENSIONS.



C3 HANDRAIL EXTENSION @ TOP
NTS

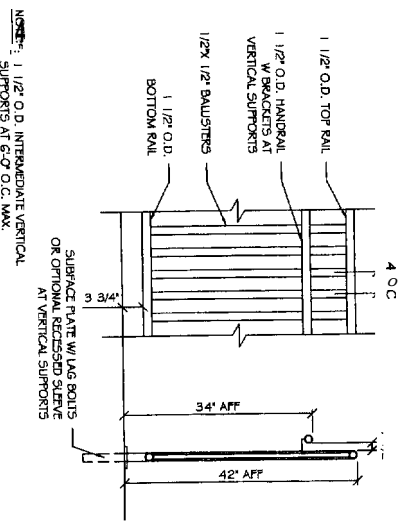


C2 HANDRAIL EXTENSION @ BOTTOM
NTS



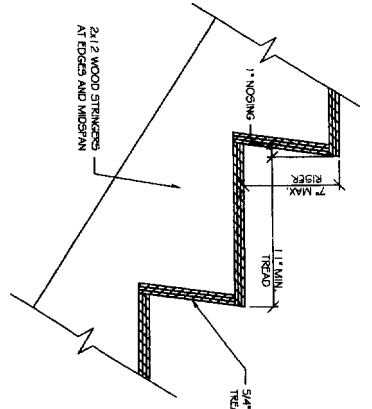
C1 TYPICAL EXTERIOR GUARDRAIL
NTS

NOTE: 1 1/2" O.D. INTERMEDIATE VERTICAL SUPPORTS AT 6'-0" O.C. MAX.

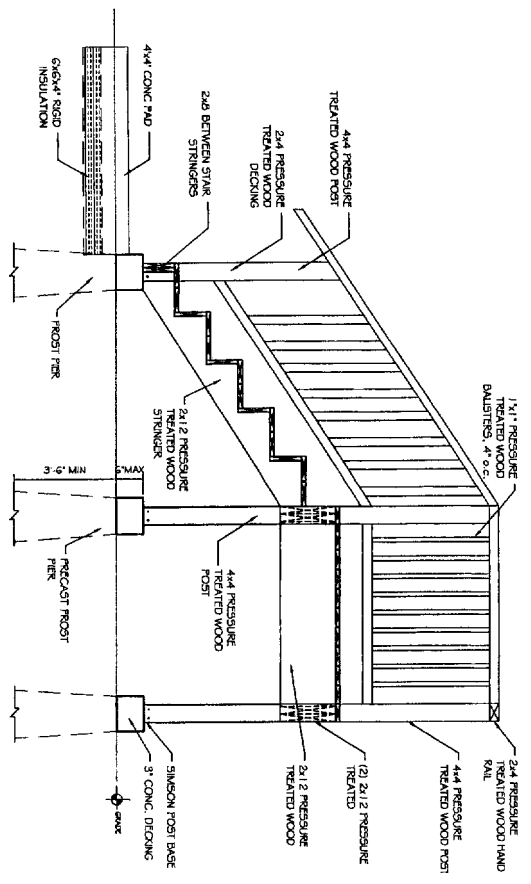


B3 EXTERIOR GUARDRAIL/HANDRAIL
NTS

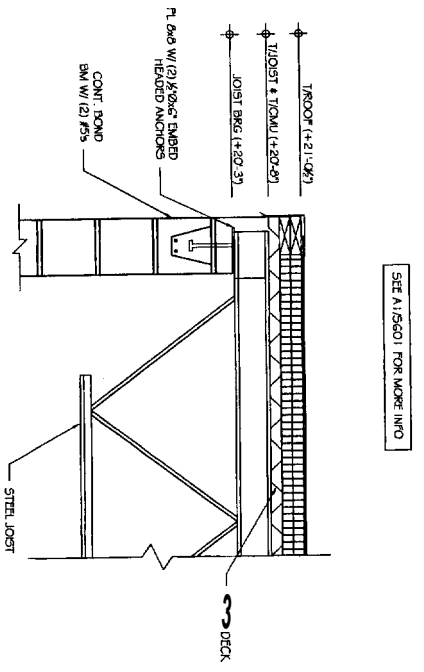
NOTE: 1 1/2" O.D. INTERMEDIATE VERTICAL SUPPORTS AT 6'-0" O.C. MAX.



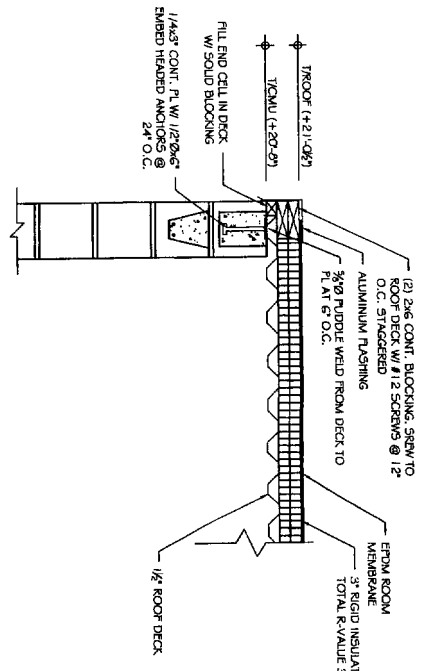
B2 TYPICAL STAIR TREADRISER
NTS



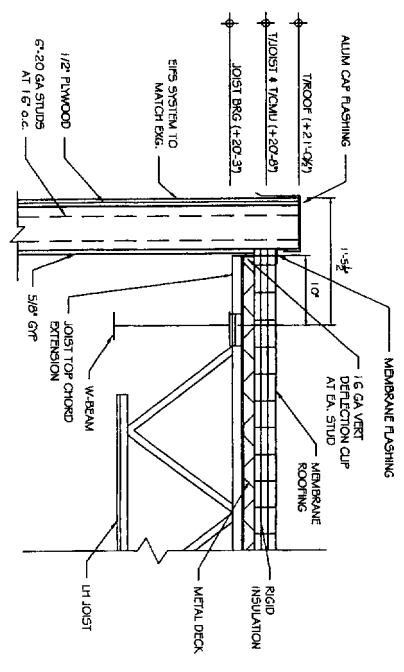
B1 ELEVATION AT STAIRS
NTS



A3 JOIST BEARING @ LINE 2
A601 SCALE: 1" = 1'



A2 SECTION AT LINE 2
A601 SCALE: 1" = 1'



A1 DETAIL
A601 SCALE: 1" = 1'

REVISIONS		DATE
No.	BY	DESCRIPTION

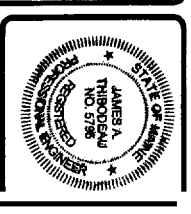
PROJECT: **SID HARVEY ADDITION**
160 ST. JOHN ST
FOR HARVEY ASSOCIATES

SHEET TITLE:
ARCHITECTURAL DETAILS
ISSUED FOR CONSTRUCTION

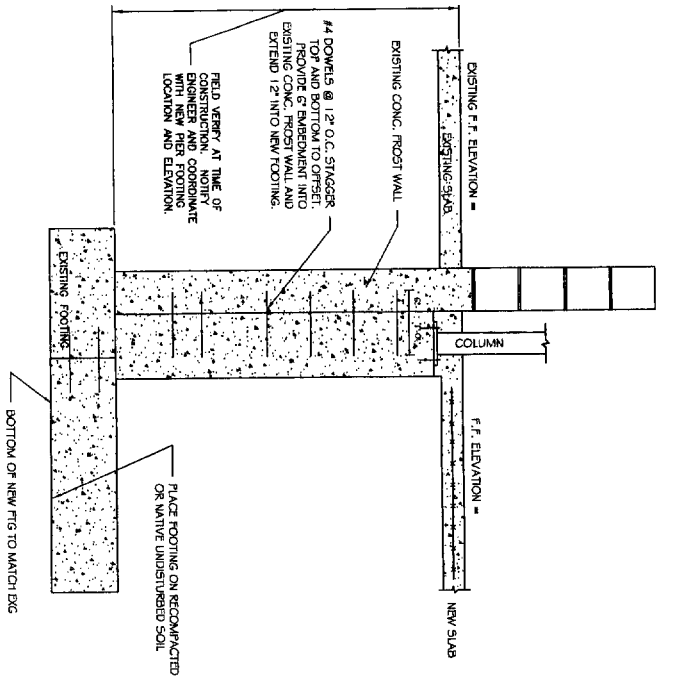
THIS DOCUMENT IS THE PROPERTY OF ASSOCIATED DESIGN PARTNERS, INC. IT IS TO BE USED ONLY FOR THE PROJECT AND SITE SPECIFICALLY IDENTIFIED HEREIN. ANY OTHER USE OF THIS DOCUMENT WITHOUT WRITTEN CONSENT IS PROHIBITED.

ASSOCIATED DESIGN PARTNERS INC.

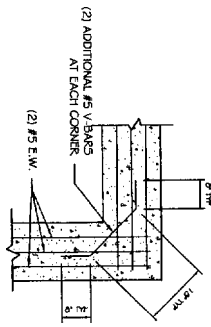
60 Leighton Road Falmouth, Maine 04105 Office: (207) 878-1751 E-mail: info@adpartners.com



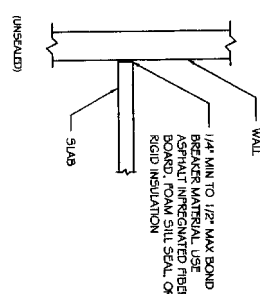
DATE: 09-07-2004
SCALE: 1/2" = 1'-0"
DRAWN BY: AL
PROJECT NUMBER: **04100**
SHEET NO: **A601**



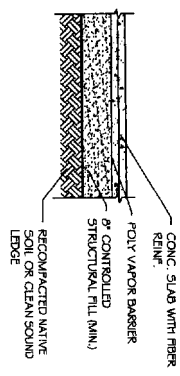
C4 NEW FOUND WALL TO EXG. WALL
S101 SCALE: 1/2" = 1'-0"



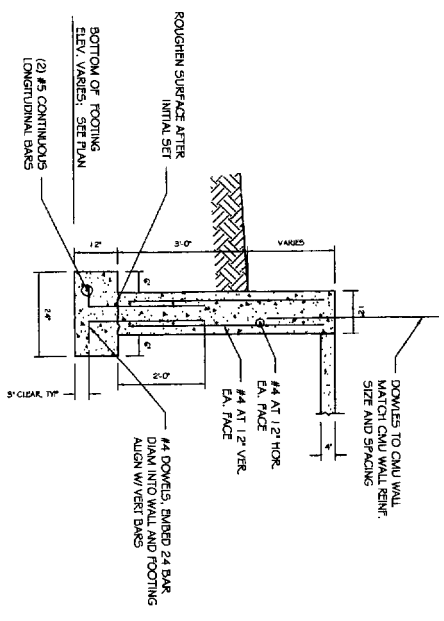
B4 CORNER REINFORCING IN FOOTING
S101 SCALE: 1/2" = 1'-0"



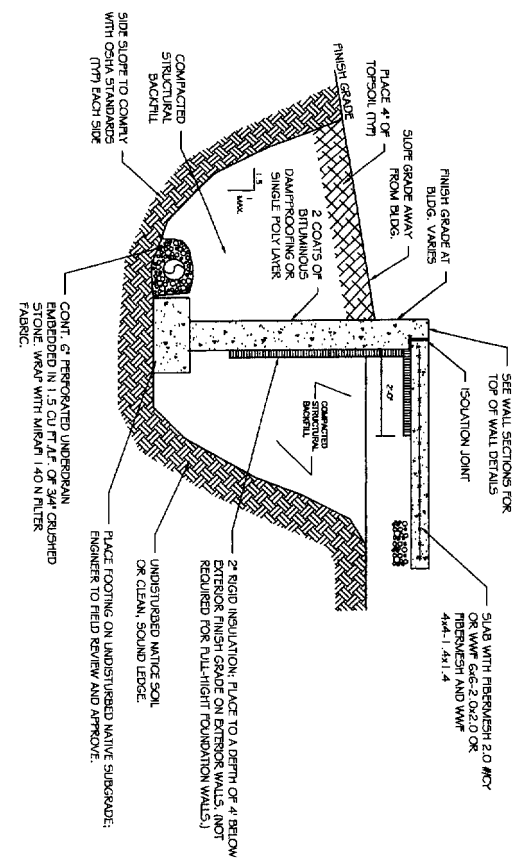
C3 ISOLATION JOINT
S101 SCALE: AS SHOWN



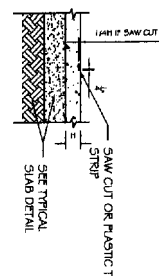
B3 TYPICAL SLAB DETAIL
S101 SCALE: 1/2" = 1'-0"



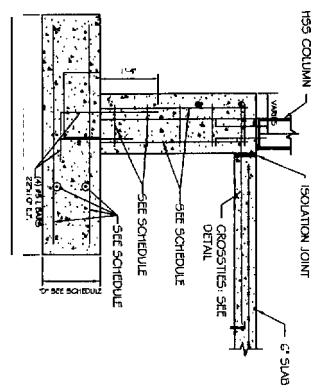
A3 TYPICAL 12\"/>



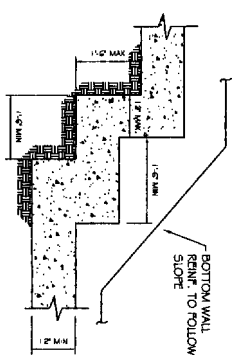
C2 TYPICAL EARTHCAP DETAIL
S101 SCALE: AS SHOWN



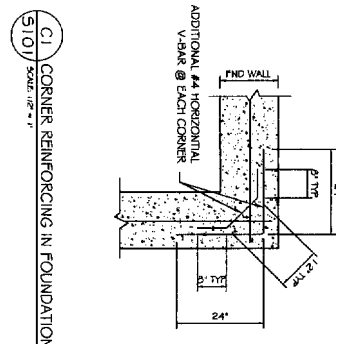
B2 TYPICAL SLAB CONTROL JOINT DETAIL
S101 SCALE: 1/2" = 1'-0"



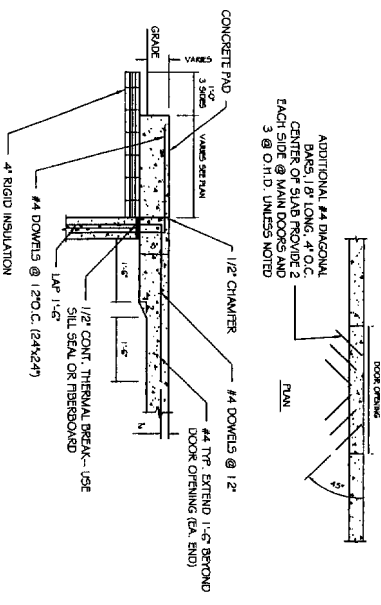
A2 PIER FOOTING SECTION
S101 SCALE: 1/2" = 1'-0"



B1 STEPPED FOOTING DETAIL
S101 SCALE: 1/2" = 1'-0"



C1 CORNER REINFORCING IN FOUNDATION WALL
S101 SCALE: 1/2" = 1'-0"



A1 TYPICAL SLAB DETAIL @ DOOR OPENINGS
S101 SCALE: 1/2" = 1'-0"

DATE	BY	REVISIONS DESCRIPTION
03-07-2004 <td></td> <td></td>		

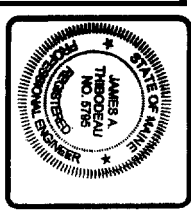
PROJECT: **SID HARVEY ADDITION**
 160 ST. JOHN ST
 FOR HARVEY ASSOCIATES
 SHEET TITLE: **FOUNDATION NOTES AND DETAILS**
 ISSUED FOR CONSTRUCTION

THIS DOCUMENT, DESIGN AND CONSTRUCTION SHALL BE THE PROPERTY OF ASSOCIATED DESIGN PARTNERS INC. ANY REPRODUCTION, COPIING OR ANY OTHER USE OF THIS DOCUMENT WITHOUT THE WRITTEN PERMISSION IS PROHIBITED.

ASSOCIATED DESIGN PARTNERS INC.

Office: (207) 878-1788
 Fax: (207) 878-1788
 E-Mail: adp@adpengineering.com

60 Montgomery Road #4105
 Portland, ME 04105



SHEET NO: **S301**

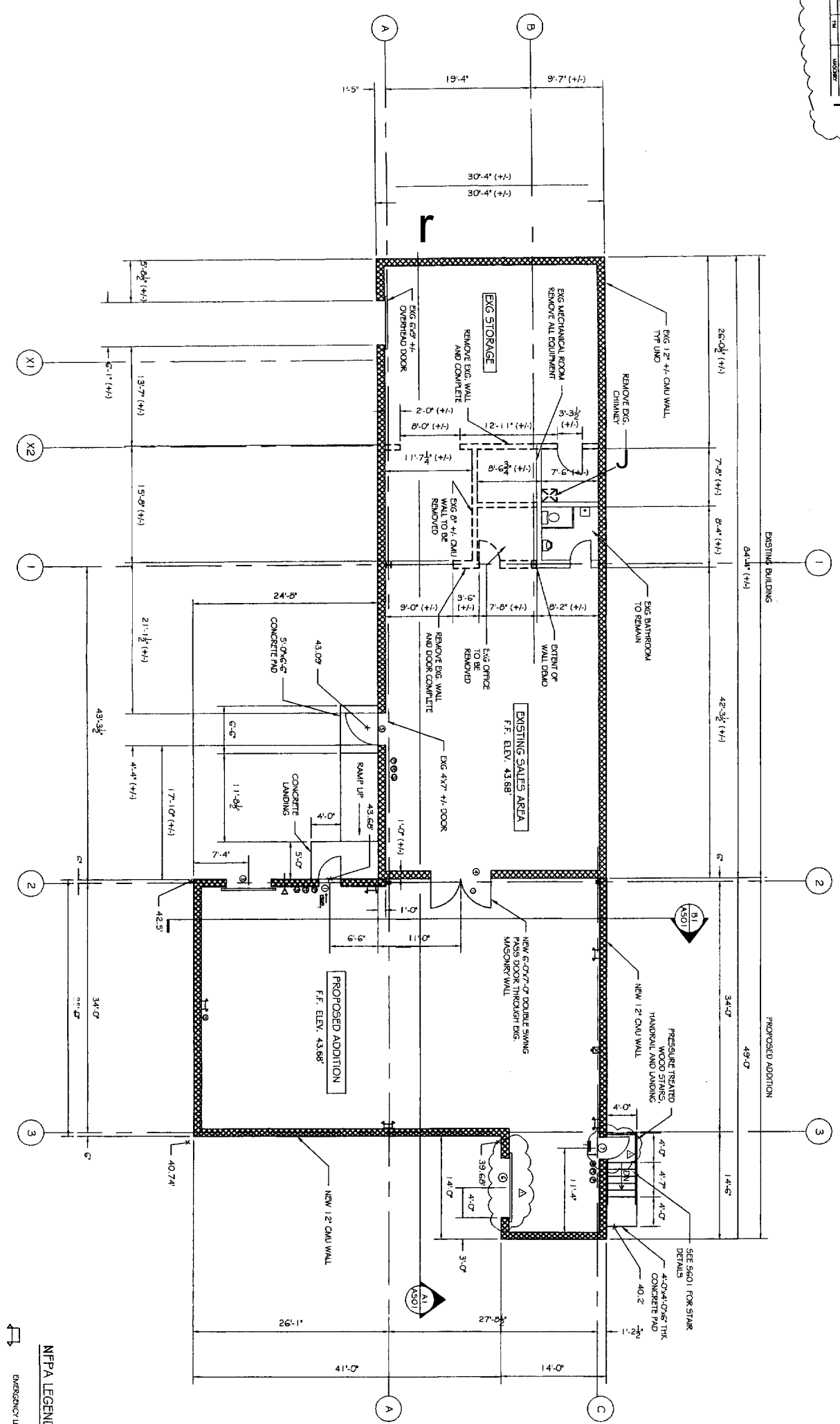
PROJECT NORTH



DOORS		FRAMES	
NO.	TYPE	NO.	TYPE
1	1/2" x 4 1/2" STAINLESS STEEL	1	ALUMINUM
2	1/2" x 4 1/2" STAINLESS STEEL	2	ALUMINUM
3	1/2" x 4 1/2" STAINLESS STEEL	3	ALUMINUM
4	1/2" x 4 1/2" STAINLESS STEEL	4	ALUMINUM
5	1/2" x 4 1/2" STAINLESS STEEL	5	ALUMINUM
6	1/2" x 4 1/2" STAINLESS STEEL	6	ALUMINUM
7	1/2" x 4 1/2" STAINLESS STEEL	7	ALUMINUM
8	1/2" x 4 1/2" STAINLESS STEEL	8	ALUMINUM
9	1/2" x 4 1/2" STAINLESS STEEL	9	ALUMINUM
10	1/2" x 4 1/2" STAINLESS STEEL	10	ALUMINUM
11	1/2" x 4 1/2" STAINLESS STEEL	11	ALUMINUM
12	1/2" x 4 1/2" STAINLESS STEEL	12	ALUMINUM
13	1/2" x 4 1/2" STAINLESS STEEL	13	ALUMINUM
14	1/2" x 4 1/2" STAINLESS STEEL	14	ALUMINUM
15	1/2" x 4 1/2" STAINLESS STEEL	15	ALUMINUM
16	1/2" x 4 1/2" STAINLESS STEEL	16	ALUMINUM
17	1/2" x 4 1/2" STAINLESS STEEL	17	ALUMINUM
18	1/2" x 4 1/2" STAINLESS STEEL	18	ALUMINUM
19	1/2" x 4 1/2" STAINLESS STEEL	19	ALUMINUM
20	1/2" x 4 1/2" STAINLESS STEEL	20	ALUMINUM

WINDOW & DOOR NOTES:

- EXTERIOR HOLLOW METAL DOORS & FRAMES:**
- PROVIDE 1/2" GAUGE HOLLOW METAL DOOR FRAME W/ WELDED & GROUND CORNERS.
 - PROVIDE 1/2" GAUGE THERMALLY INSULATED GALVANIZED HOLLOW METAL DOOR AT REAR LOADING DOCK AREA.
 - PROVIDE 4 1/2" x 4 1/2" STAINLESS STEEL FRAMES.
 - PROVIDE ALUMINUM THRESHOLD AND WEATHERSTRIPPING.
- INTERIOR HOLLOW METAL DOORS & FRAMES:**
- PROVIDE 1/2" GAUGE HOLLOW METAL DOOR FRAME W/ WELDED & GROUND CORNERS W/ THERMALLY INSULATED GALVANIZED HOLLOW METAL DOOR.
 - PROVIDE 4 1/2" x 4 1/2" STAINLESS STEEL FRAMES.
- OVERHEAD DOORS:**
- PROVIDE 20 GAUGE GALVANIZED STEEL.
 - INTERIOR SLAT TO BE 24 GAUGE GALVANIZED STEEL.
 - PROVIDE MANUFACTURER'S STANDARD FINISH FOR INTERIOR & EXTERIOR SLATS AND HOOD. ALL OTHER STEEL REQUIRED FOR THE PROPER ATTACHMENT AND INSTALLATION OF THE OVERHEAD DOOR TO BE GALVANIZED.
 - PROVIDE MANUFACTURER'S STANDARD COUNTERBALANCE DESIGNED FOR 20,000 CYCLE LIFE.
 - PROVIDE INTERIOR BOTTOM BAR SLIDE BOOTLOCK & CHAIN KEYS LOCKS.



A1 PROPOSED ADDITION FLOOR PLAN
A101 SCALE: 1/8" = 1'-0"

NFPA LEGEND

	EMERGENCY LIGHT
	EXIT LIGHT
	1/2" GAUGE THERMALLY INSULATED GALVANIZED HOLLOW METAL DOOR
	4 1/2" x 4 1/2" STAINLESS STEEL FRAME
	ALUMINUM PULL STATION
	1 1/2" GAUGE THERMALLY INSULATED GALVANIZED STEEL
	SMOKE DETECTOR
	1 HR RATING
	2 HR RATING

PROJECT: **SID HARVEY ADDITION**
160 ST JOHN STREET
FOR HARVEY ASSOCIATES

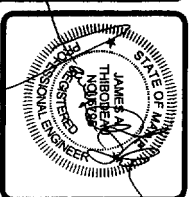
SHEET TITLE: **FIRST FLOOR PLAN**
ISSUED FOR CONSTRUCTION

NO.	BY	DESCRIPTION	DATE
1	ASW	REVISIONS PER OWNER	10/1/04
2	ASW	GENERAL REVISIONS	10/28/04

ASSOCIATED DESIGN PARTNERS INC.

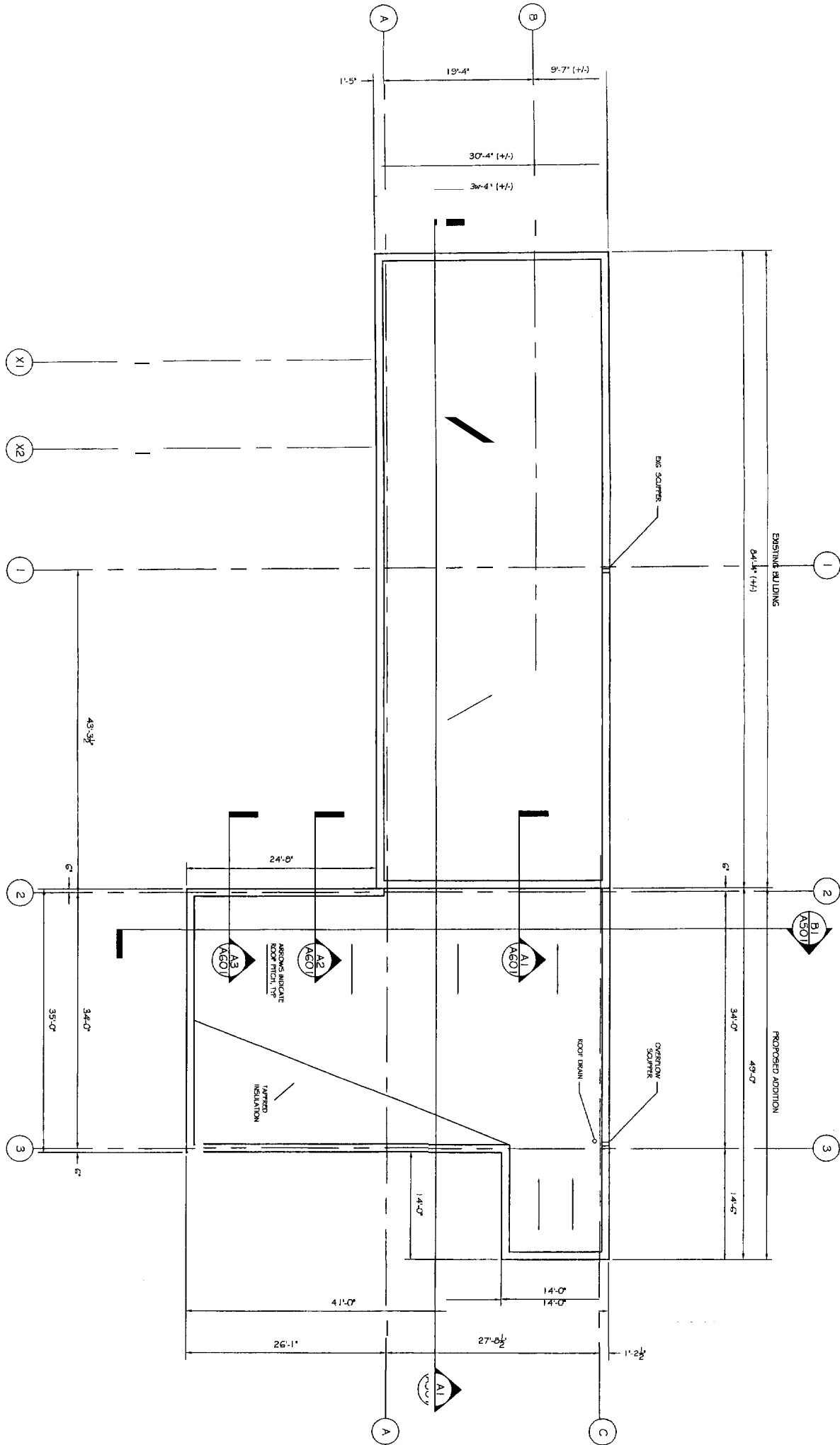
80 Leighton Road
Falmouth, Maine 04105

Office: (207) 878-1751
Fax: (207) 878-1780
E-Mail: adp@adpengineering.com



DATE: 09-07-2004
SCALE: 1/8" = 1'-0"
DRAWN BY: ASW
DESIGN BY: NNR
PROJECT NUMBER: **04100**
FILE # 04100_A101DWG
SHEET NO. **A101**

A1 PROPOSED ROOF PLAN
 A301 SCALE: 1/8" = 1'-0"



REVISIONS			
No.	BY	DESCRIPTION	DATE
1			
2			
3			
4			

PROJECT: **SID HARVEY ADDITION**
160 ST. JOHN ST
 FOR: HARVEY ASSOCIATES

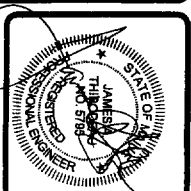
SHEET TITLE:
ROOF PLAN
ISSUED FOR CONSTRUCTION

THIS DRAWING, DESIGN AND
 EXISTENCE. THE USER OF THIS DRAWING
 IS RESPONSIBLE FOR OBTAINING ALL
 NECESSARY PERMITS AND FOR
 OBTAINING ALL NECESSARY
 INFORMATION FROM THE
 LOCAL OFFICIALS IN CONNECTION
 WITH THE PROJECT.

ASSOCIATED DESIGN PARTNERS INC.

80 Leighton Road
 Falmouth, Maine 04105

Office: (207) 878-1751
 Fax: (207) 878-1788
 E-Mail: adp0adpengineering.com



DATE: 09-07-2004
 SCALE: AS NOTED
 DESIGN BY: ASW
 DRAWN BY: NR
 FILE #: 04100.A301.DWG
 PROJECT NUMBER:
04100
 SHEET NO.:
A301