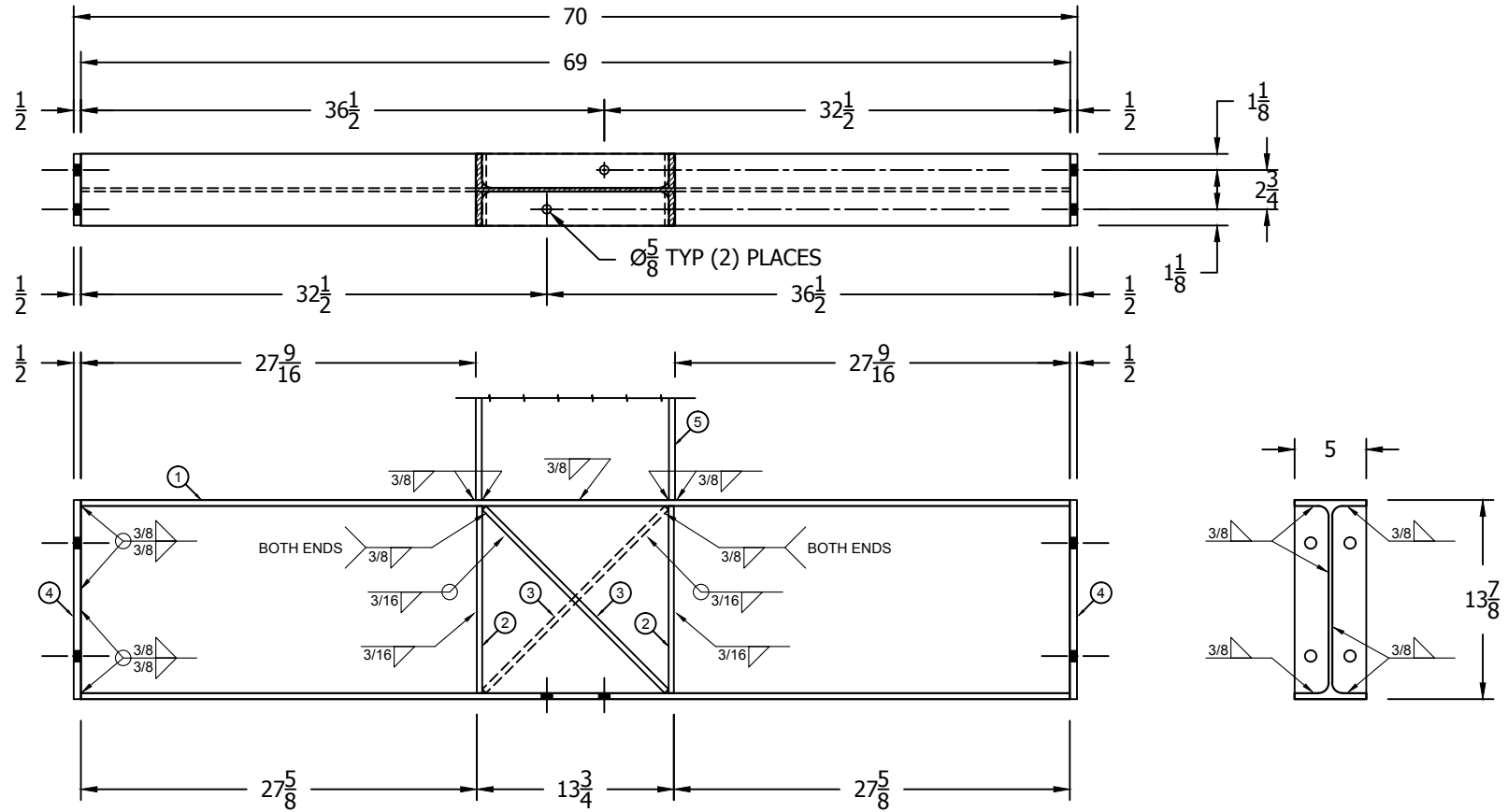


## BILL OF MATERIALS

ITEM	QTY.	DESCRIPTION	DRAWING NO	WT. #
1	1	W14 X 26# @ 69" (50 KSI)		153.99
2	4	PLT: 3/8" X 2-3/8" @ 13" LG (50 KSI)	SF200630	3.38
3	2	PLT: 3/8" X 2-3/8" @ 18" LG. (50 KSI)		4.68
4	2	PLT: 1/2" X 5" @ 13-7/8" LG. (50 KSI)		10.12
5	1	W14 X 22# @ 228" (50 KSI)	X-Y-TOWER-W14X22X228	536.98
TOTAL WEIGHT				734.09



REV.	DATE	BY	DESCRIPTION
REVISION INFORMATION			

The information contained in this drawing is considered proprietary to Elite Storage Solutions, LLC. No portion of this drawing is to be loaned, copied, reproduced, or otherwise disseminated without the written permission of Elite Storage Solutions, LLC. The inclusion of non-proprietary information (e.g. Building materials or other building) shall not be considered as a cause for disavowing this statement. The sole purpose of this drawing is informational for the customer.

STANDARD TOLERANCES		
FEET	+/-	1/8"
INCHES	+/-	1/32"
DECIMALS	+/-	.001
ANGLES	+/-	1.0°

FOR: 111	DESCRIPTION: W14 X 26# X 70" DOUBLE SIDED CANTILEVER BASE
	SCALE: 1-1/2" = 1' DRAWN BY: MDH DATE: 6/24/16 CHK BY:
1118 W. SPRING STREET MONROE, GA 30655	FILE NAME: X-Y-WELDED-BASE-W14X26X070.dwg DRAWING NO. X-Y-BASE-W14X26X70 REV. #