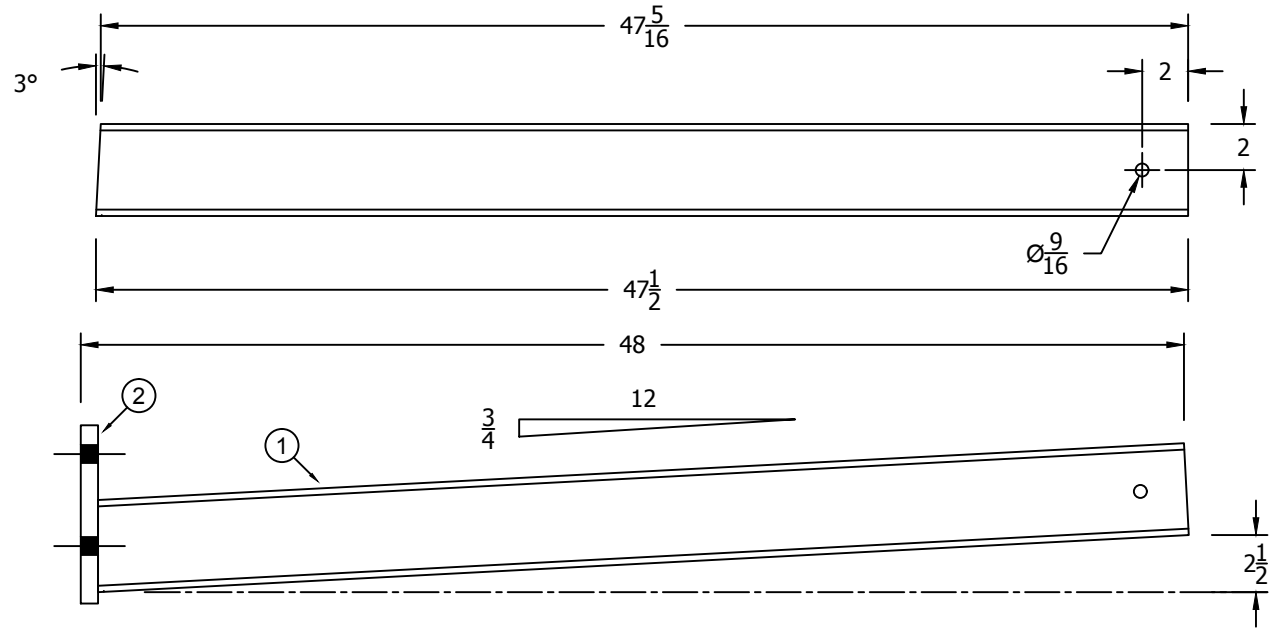
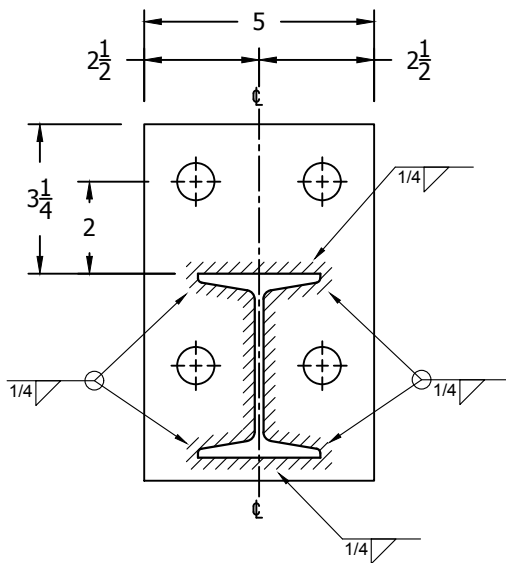


BILL OF MATERIALS


ITEM	QTY.	DESCRIPTION	DRAWING NO	WT. #
1	1	S4 X 7.7# @ 47-1/2" LG.		31.39
2	1	PLT: 3/4" X 5" @ 7-3/4" LG	SF200631	8.48
TOTAL WEIGHT				39.87



REV.	DATE	BY	DESCRIPTION
	10/18/2016 4:17:57 PM		REVISION INFORMATION

The information contained in this drawing is considered proprietary to Elite Storage Solutions, LLC. Permission of the drawing is not a license to distribute this information to any other party without prior written permission of Elite Storage Solutions, LLC. The inclusion of non-proprietary information (e.g. Building components or other hardware) shall not be considered as cause for disavowing this statement. The sole purpose of this drawing is informational for the customer.

STANDARD TOLERANCES		
FEET	+/-	1/8"
INCHES	+/-	1/32"
DECIMALS	+/-	.001
ANGLES	+/-	1.0°

FOR:	DESCRIPTION:	CANTILEVER ARM S4 X 7.7# X 48" (NOM)	
		SCALE: 1-1/2" = 1'	FILE NAME: X-Y-ARM-S4X7.7X48.dwg
1118 W. SPRING STREET MONROE, GA 30655		DRAWN BY: MDH	DRAWING NO.
		DATE: 10/14/16	X-Y-ARM-S4 X 7.7 X 48
		CHK BY:	REV. #