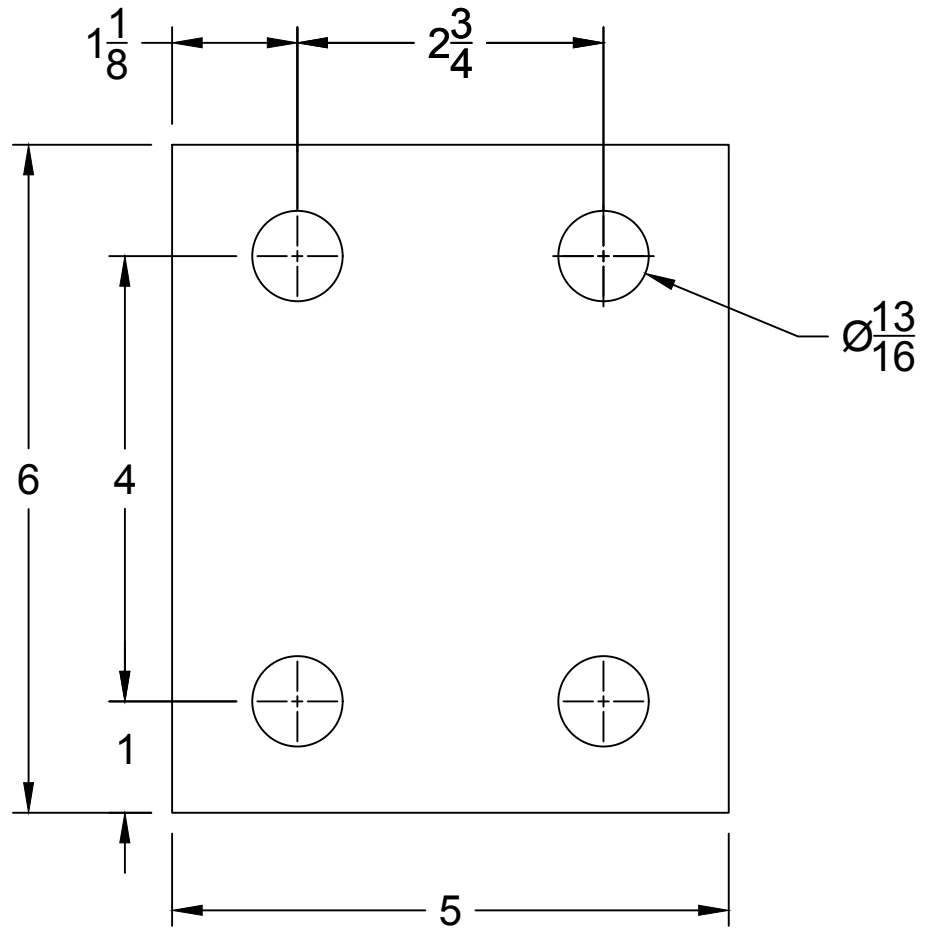


BILL OF MATERIALS

ITEM	QTY.	DESCRIPTION	DRAWING NO.	WT. #
1	1	SHEET: 16GAx5"x7-1/2"		.51



REV.	DATE	BY	DESCRIPTION
REVISION INFORMATION			
FOR:		DESCRIPTION:	
		SHIM 16GAx5"x6"	

STANDARD TOLERANCES FEET +/- 1/8" INCHES +/- 1/32" DECIMALS +/- .001 ANGLES +/- 1.0°	The information contained in this drawing is considered proprietary to Elite Storage Solutions, LLC. Possession of this drawing is not a license to duplicate this information in any other party without prior written permission of Elite Storage Solutions, LLC. The inclusion of non-proprietary information (ie: building parameters or other locations) shall not be considered an claim for establishing this information. The sole purpose of this drawing is informational for the customer.	 1118 W. SPRING STREET MONROE, GA 30655	SCALE: NTS DRAWN BY: L DATE: 7/27/2011 CHK BY:	FILE NAME: X-R-SHIM-5.0x6.0x16GA-CANT DRAWING NO. X-R-SHIM-5X6X16GA	REV. # 0
---	---	--	--	---	--