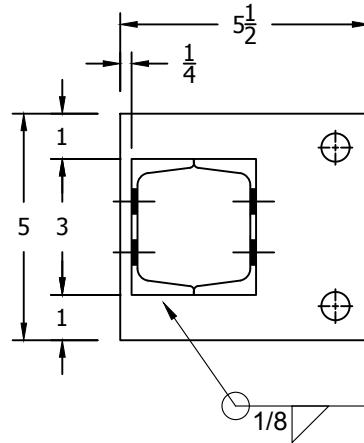
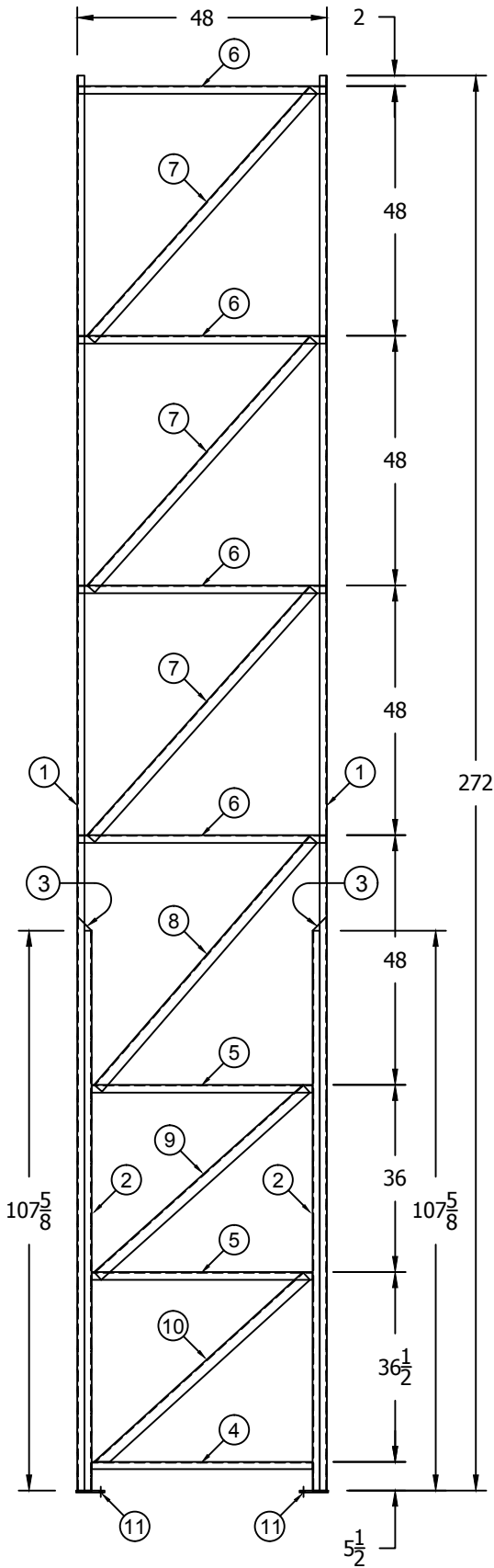


BILL OF MATERIALS

ITEM	QTY.	DESCRIPTION	DRAWING NO.	WT. #
1	2	C3 X 3.5# @ 272" LG	AF000211	81.71
2	2	C3 X 3.5# @ 107-5/8" LG	AF000211	32.33
3	2	CAP-C3		.25
4	1	C3 X 3.5# @ 42-1/2" LG		12.77
5	2	L1-1/2" X 1-1/2" X 1/8"@ 42-1/2"	AF000219	4.49
6	4	L1-1/2" X 1-1/2" X 1/8"@ 47-11/16"	AF000219	5.03
7	3	L2" X 2" X 1/8"@ 64-1/4"	AF000219	9.10
8	1	L2" X 2" X 1/8"@ 63-1/4"	AF000219	8.96
9	1	L2" X 2" X 1/8"@ 54"	AF000219	7.65
10	1	L2" X 2" X 1/8"@ 54-1/4" MITRE 1 END	AF000219	7.68
11	2	BSPLT: 5" X 5-1/2" X 3/8"	AF200084	3.01
TOTAL WEIGHT				328.06



REV.	DATE	BY	DESCRIPTION
REVISION INFORMATION			
FOR: FERGUSON		DESCRIPTION: C3 X 3.5# STRUCTURAL FRAME 48"D X 272"H REINF. F/R X 108"	

STANDARD TOLERANCES	
FEET	+/- 1/8"
INCHES	+/- 1/32"
DECIMALS	+/- .001
ANGLES	+/- 1.0°

The information contained in this drawing is considered proprietary by Elite Storage Solutions, LLC. Permission of this drawing is not a license to duplicate this information in any other party without prior written permission of Elite Storage Solutions, LLC. The inclusion of non-proprietary information (ie: building parameters or other locations) shall not be considered an acknowledgment of liability for any errors or omissions in this information. The sole purpose of this drawing is informational for the customer.

ELITE STORAGE SOLUTIONS

1118 W. SPRING STREET MONROE, GA 30655

SCALE: 3/8" = 1'	FILE NAME: F3LS-27248-Z-Z-1-108-108-00----
DRAWN BY: MDH	DRAWING NO.
DATE: 10/4/16	F3LS-27248/Z/Z-1-108-108-00----
CHK BY:	REV. #