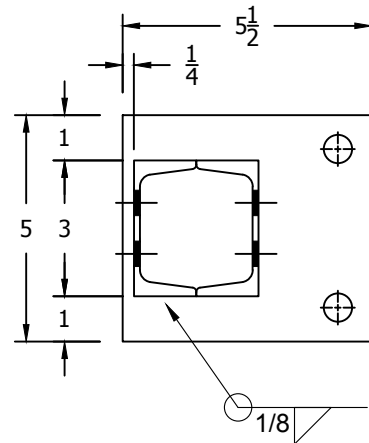
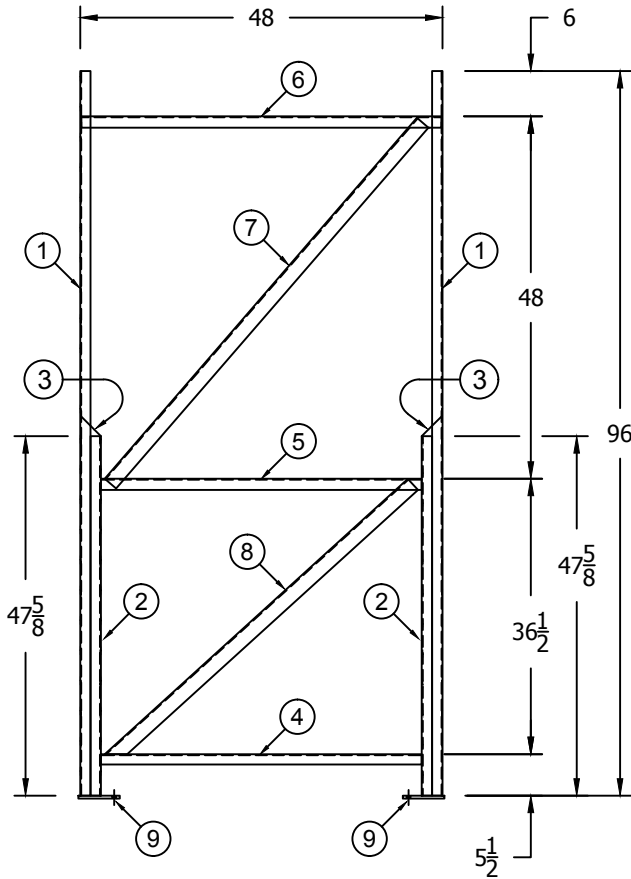


BILL OF MATERIALS

ITEM	QTY.	DESCRIPTION	DRAWING NO.	WT. #
1	2	C3 X 3.5# @ 96" LG	AF000211	28.84
2	2	C3 X 3.5# @ 47-5/8" LG	AF000211	14.31
3	2	CAP-C3		.25
4	1	C3 X 3.5# @ 42-1/2" LG		12.77
5	1	L1-1/2" X 1-1/2" X 1/8"@ 42-1/2"	AF000219	4.49
6	1	L1-1/2" X 1-1/2" X 1/8"@ 47-11/16"	AF000219	5.03
7	1	L" X 2" X 1/8"@ 63-1/8"	AF000219	8.94
8	1	L2" X 2" X 1/8"@ 54-1/4" MITRE 1 END	AF000219	7.68
9	2	BSPLT: 5" X 5-1/2" X 3/8"	AF200084	3.01
		TOTAL WEIGHT		131.73



REV.	DATE	BY	DESCRIPTION
REVISION INFORMATION			
FOR: FERGUSON ENTERPRISES		DESCRIPTION: C3 X 3.5# STRUCTURAL FRAME 48"D X 96"H REINF F/R X 48"	
STANDARD TOLERANCES		SCALE: 1/2" = 1'	
FEET	+/- 1/8"	FILE NAME: F3LS-09648-Z-Z-1-048-048-00----	
INCHES	+/- 1/32"	DRAWING NO.	
DECIMALS	+/- .001	DATE: 10/3/16	
ANGLES	+/- 1.0D	CHK BY: F3LS-09648/Z/Z-1-048-048-00	
		REV. #	

STANDARD TOLERANCES	
FEET	+/- 1/8"
INCHES	+/- 1/32"
DECIMALS	+/- .001
ANGLES	+/- 1.0D

The information contained in this drawing is considered proprietary to Elite Storage Solutions, LLC. Permission of this drawing is not a license to distribute this information to any other party without prior written permission of Elite Storage Solutions, LLC. The inclusion of non-proprietary information (including parameters or other functions) shall not be considered an acknowledgment that the information is public or that the information is not confidential or that the information is not the property of Elite Storage Solutions, LLC.



1118 W. SPRING STREET MONROE, GA 30655