

GENERAL PROJECT NOTES:

1. ALL RACKING FOR THIS PROJECT IS DESIGNED TO BE COMPLIANT WITH THE FOLLOWING CODE:

IBC2009

SEISMIC DESIGN CRITERIA PER LAT: 43.6489, LONG: -70.2789

Ss=.316 g

S1=.077 g

Fa=1.540

Fv=2.400

2. ALL BOLTS FOR STRUCTURAL CONNECTIONS ARE ASTM A325 BOLTS (OR EQUIVALENT) W/FLANGED LOCK NUTS. ALL CONNECTIONS ARE BEARING AND TO BE INSTALLED SNUG TIGHT (ST). INSPECTION TO SNUG TIGHT CONDITION.

3. SLAB DESIGN BY OTHERS.

4. PUBLIC ACCESS IS NOT ALLOWED (Ip=1.0).

5. THE COMPONENTS FOR THIS PROJECT ARE PREFABRICATED SHOP WELDED FRAME AND BEAM ASSEMBLIES.

6. THIS STRUCTURE IS TO BE LOCATED IN A BUILDING. IT IS DESIGNED AS A FREE STANDING STRUCTURE AND IS NOT TIED TO THE BUILDING.

7. MECHANICAL, ELECTRICAL, PLUMBING, FIRE SUPPRESSION, EGRESS, AND APPLICABLE LIFE AND SAFETY ISSUES ARE BY OTHERS.

8. MINIMUM CLEARANCE BETWEEN RACKING STEEL TO NEAREST OBSTRUCTION

3" CROSS AISLE, 6" DOWN AISLE.

9. THE USER IS REQUIRED TO DISPLAY APPROPRIATE SIGNAGE INDICATING MAXIMUM PERMISSIBLE DESIGN LOADS IN A PROMINENT, UNOBSTRUCTED VIEWING POSITION.

ERECTOR NOTES:

1. INSTALLER MAY NOT FIELD WELD OR MODIFY ANY RACK COMPONENTS UNLESS SPECIFIED BY INSTALLATION DRAWINGS OR APPROVED BY PROJECT ENGINEER AND/OR PROJECT MANAGER.

2. PRIOR TO INSTALLATION, ERECTOR WILL VERIFY AND CONFIRM LOCATION AND EXTENT OF WORK TO BE PERFORMED WITH GENERAL CONTRACTOR.

3. ALL VERTICAL DIMENSIONS ARE TO BOTTOM OF BASE PLATE.

4. THE STARTER BAY OF EACH ROW MUST BE ANCHORED TO THE FLOOR TO INSURE PROPER PLACEMENT OF THE RACK TO THE FLOOR LAYOUT. MAKE SURE THAT THE STARTER BAY IS SQUARE AND PLUMB BEFORE CONTINUING ANCHORAGE OF REMAINING BAYS. USE SHIMS AS REQUIRED.

5. ANCHORS MUST NOT BE INSTALLED CLOSER THAN THE RECOMMENDED MINIMUM EDGE DISTANCE TO A FREE OR CUT EDGE OR POUR STOP (SEE ANCHOR CHART THIS PAGE FOR DISTANCE), PLEASE CONTACT ELITE STORAGE SOLUTIONS FOR DIRECTIVE OF CORRECTIVE ACTION PRIOR TO ANCHOR INSTALLATION.

6. AS A GUIDE TO INSTALLATION TORQUE:

NON BOXED CONNECTIONS 60 FT. LBS

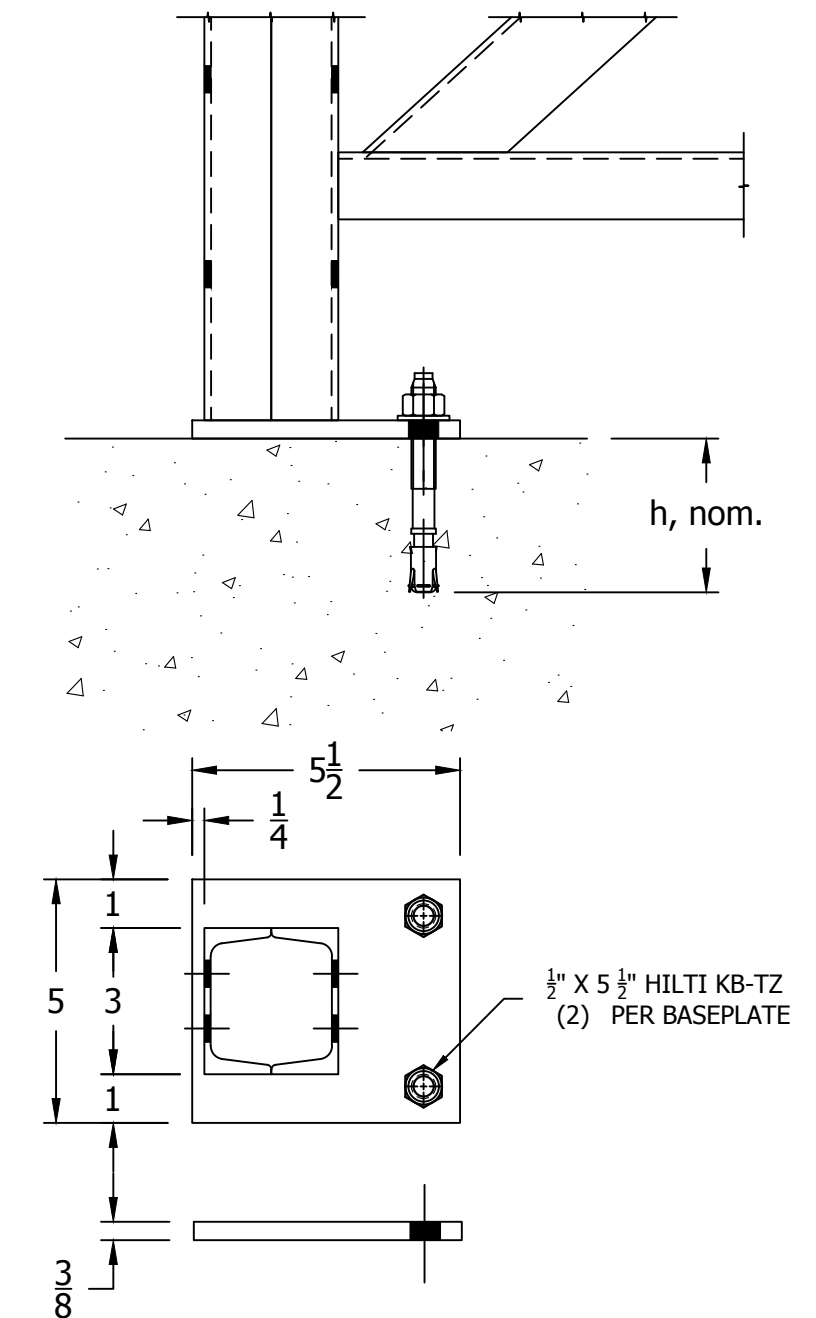
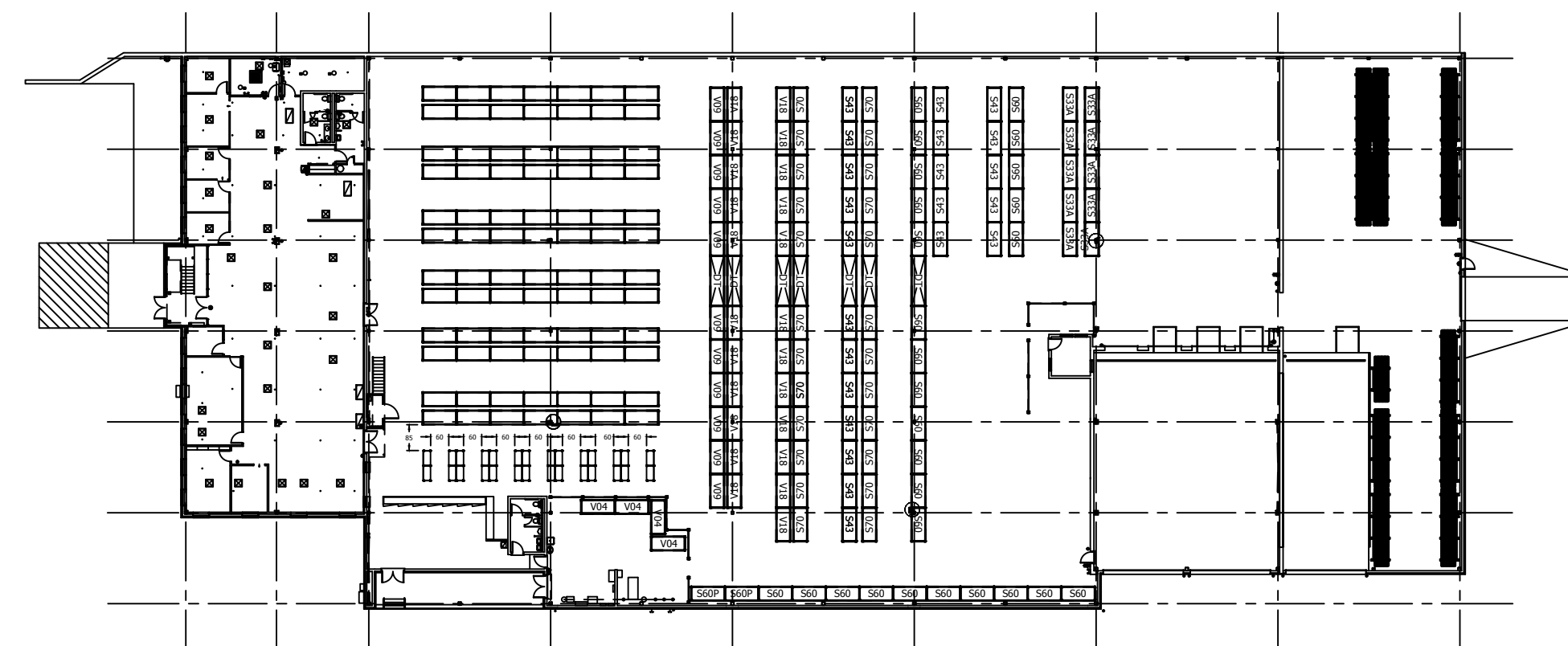
BOXED CONNECTIONS 30 FT. LBS

7. ANCHORS MUST BE INSTALLED TO WITHIN 5 DEGREES OF VERTICAL AND IN ACCORDANCE TO THE MANUFACTURERS WRITTEN INSTALLATION PROCEDURES. PROCEDURES CAN BE REQUESTED FROM ELITE. PLEASE CONTACT ELITE STORAGE SOLUTIONS FOR DIRECTIVE OF CORRECTIVE ACTION PRIOR TO ANCHOR INSTALLATION IF ANGLE EXCEEDS 5 DEGREES.

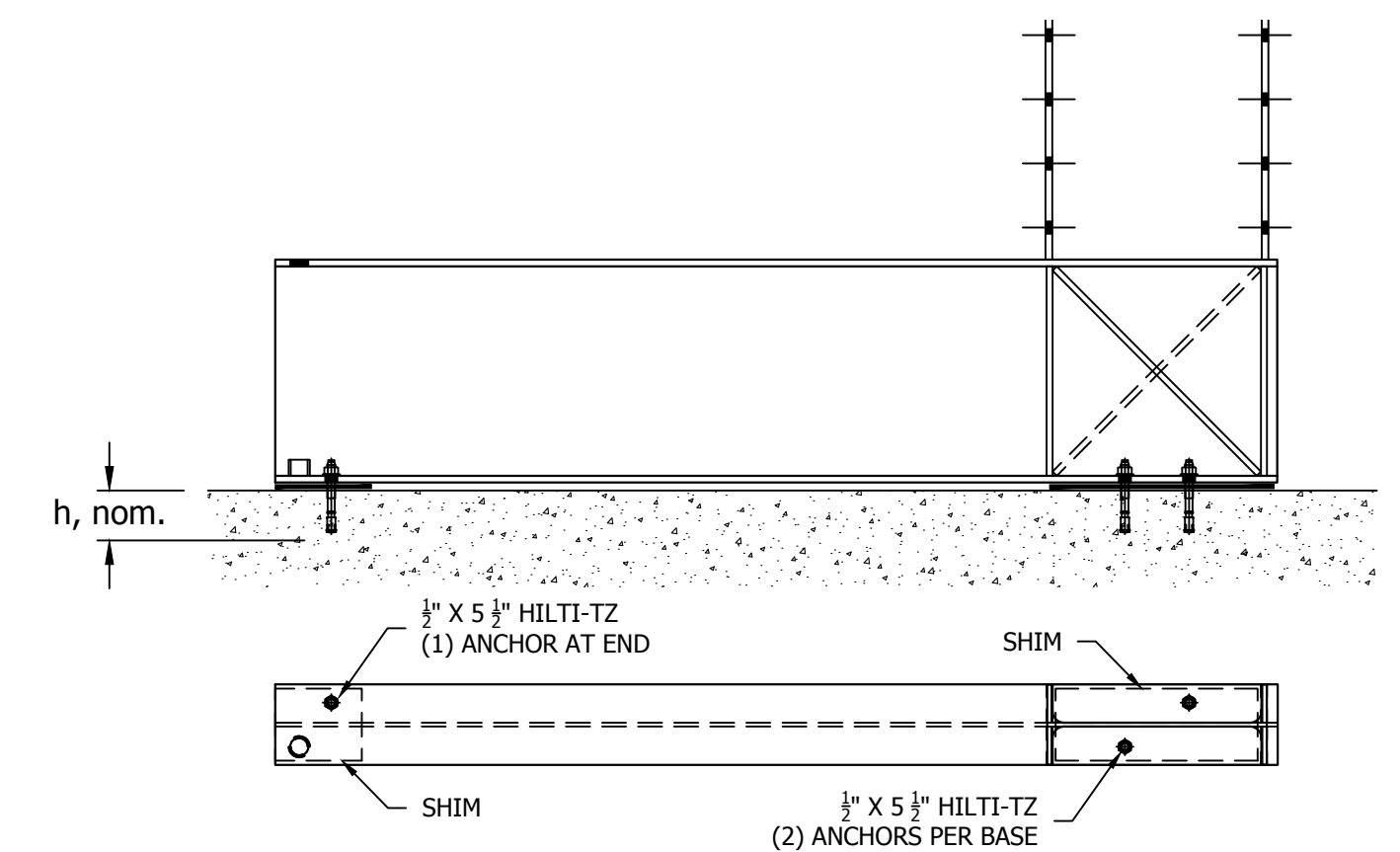
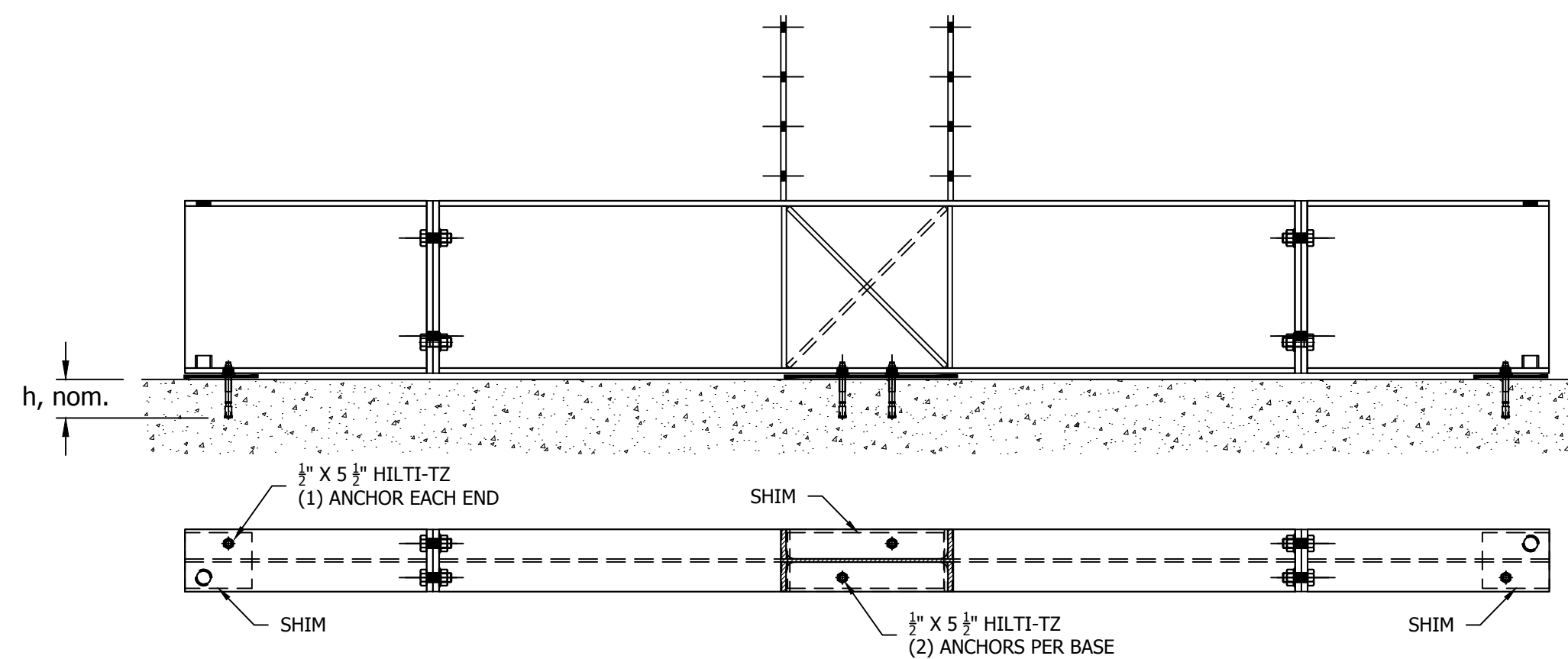
8. ALL BOLTS MUST BE SECURELY FASTENED WITH THE NUT PROPERLY ENGAGED. PROPER ENGAGEMENT WILL RESULT IN ONE FULL THREAD EXTENDING BEYOND THE NUT EDGE. PLEASE CONTACT ELITE STORAGE SOLUTIONS FOR DIRECTIVE OF CORRECTIVE ACTION PRIOR TO BOLT INSTALLATION IF PROPER THREAD ENGAGEMENT IS NOT ACHIEVED..



DRAWING INDEX			
SHEET	REV	DATE	TITLE
CV	-	10/20/2016	COVER PAGE
C010	-	10/20/2016	SCOPE OF WORK
L010	-	10/20/2016	ELEVATIONS
L020	-	10/20/2016	ELEVATIONS
D010	-	10/20/2016	DETAILS
BOM	-	10/20/2016	BILL OF MATERIALS



ANCHORS:	HILTI KB TZ	Diameter:	1/2"	ESR-1917
EMBEDMENT (h,nom) IN CONCRETE				3-5/8"
MINIMUM CONCRETE STRENGTH (f'c)				3000psi
MINIMUM CONCRETE THICKNESS				6"
MINIMUM ANCHOR SPACING (center-center)				2-3/8"
MINIMUM EDGE DISTANCE (to cut or free edge of concrete)				2-3/8"
MINIMUM TORQUE				40 FT. LBS.



FOR:	FERGUSON ENTERPRISES 172 SAINT JOHN STREET PORTLAND, ME 04102	DESCRIPTION:	COVER SHEET
SCALE:	NOTED	FILE NAME:	JN42946-LO1
DRAWN BY:	MDH	DRAWING NO.:	JN42946-LO1
DATE:	10/20/16	SHEET NO.:	CV
CHK BY:			

USE & MAINTENANCE:
 1.) INSTRUCT ALL HANDLING AND EQUIPMENT OPERATORS IN THE CORRECT USE OF THE HANDLING EQUIPMENT.
 2.) CONDUCT REGULAR STORAGE RACK INSPECTIONS FOR:
 A.) CORRECT APPLICATION AND USE.
 B.) LOAD WEIGHT, SIZE, AND STACKING WITHIN PERMISSIBLE SAFE LIMITS.
 C.) INCIDENTAL DAMAGE TO OR DISLIDGEMENT OF STORAGE RACK COMPONENTS.

CONFIGURATION CHANGES:
 1.) THIS SET OF ELITE DRAWINGS SHOWS ALL OF THE PERMISSIBLE CONFIGURATIONS OF THESE COMPONENTS. OTHER CONFIGURATIONS MAY BE PERMITTED UPON REVIEW BY A ELITE ENGINEERING REPRESENTATIVE AND REVISION OF THESE DRAWINGS.
 2.) ARRANGEMENT OF THESE COMPONENTS, OTHER THAN SHOWN, IS NOT PERMITTED. ARRANGEMENT OF THE COMPONENTS, OTHER THAN AS SHOWN, WILL HAVE AN EFFECT UPON THE SAFE CARRYING CAPACITY OF ONE OR ALL OF THE COMPONENTS.

The information contained in this drawing is considered proprietary to Elite Storage Solutions, LLC. Permission of this drawing is not a license to distribute the information to any other party without prior written permission of Elite Storage Solutions, LLC. The inclusion of non-proprietary information (including parameters or safety factors) shall not be construed as a license for duplicating the information. The sole purpose of this drawing is intended for the customer.



1118 W. SPRING STREET
MONROE, GA 30655

REV.	DATE	BY	DESCRIPTION
REVISION INFORMATION			