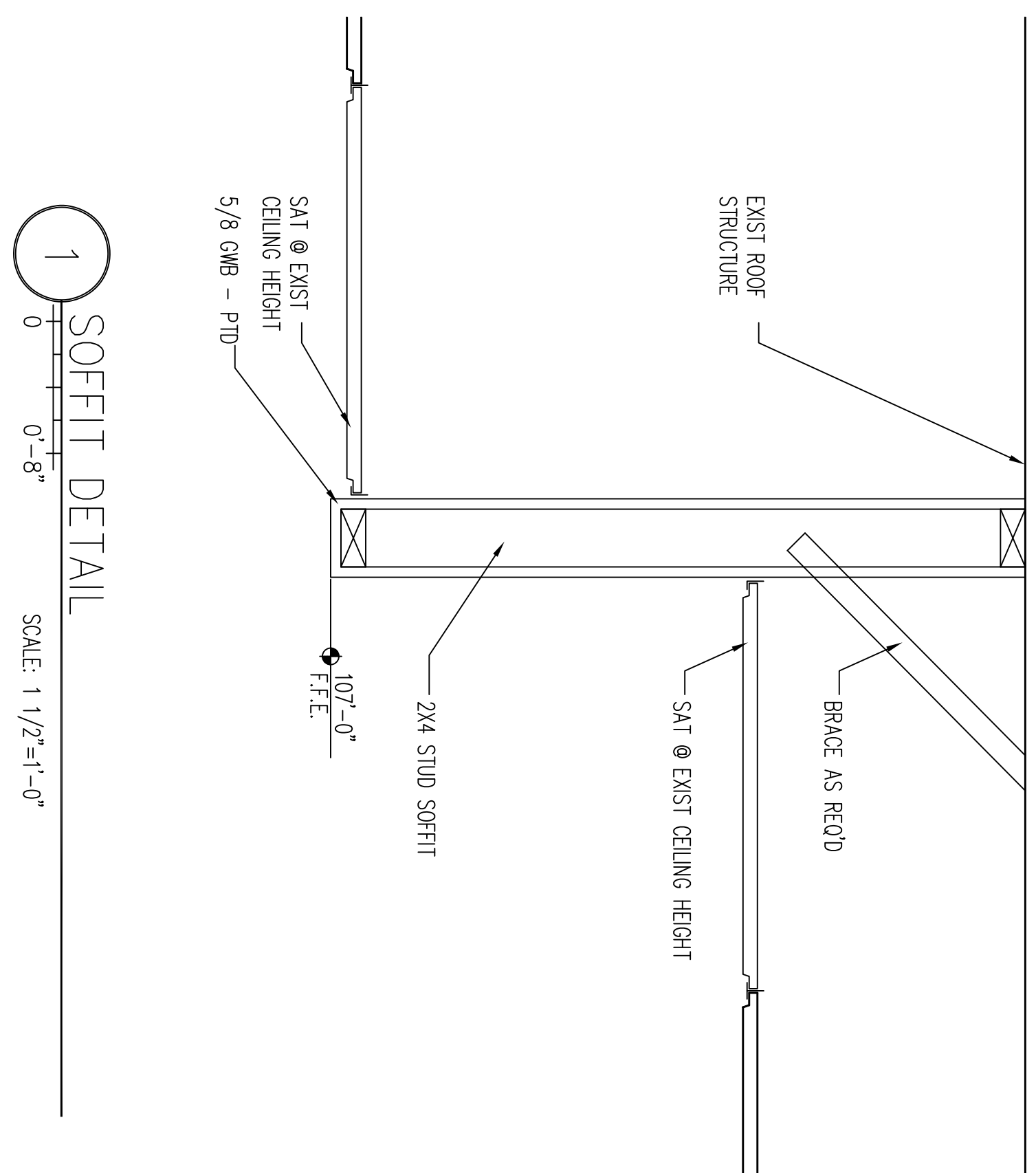
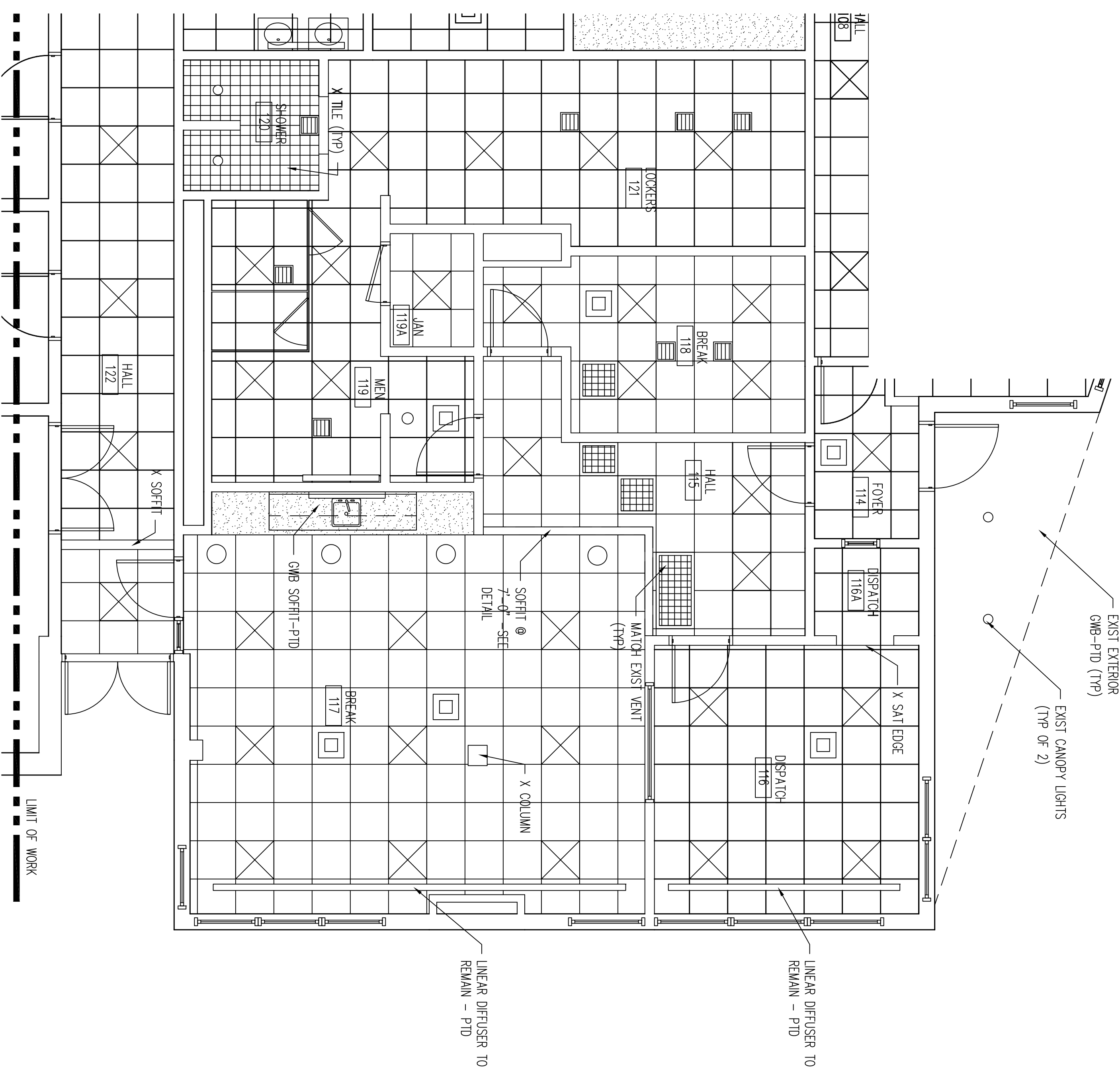


- GENERAL NOTE:**
1. LEAVE AV. CAMERA, SPEAKERS & SIMILAR IN PLACE.
 2. ALL CEILINGS TO STAY AT EXISTING HEIGHT - UNO
 3. SEE ELEC DRAWINGS FOR ADDITIONAL INFO.
 4. CONTRACTOR IS RESPONSIBLE FOR CLEANING & REINSTALLING ALL DIFFUSERS, VENTS & SIMILAR AT EXISTING LOCATIONS.
 5. CONTRACTOR IS RESPONSIBLE FOR PROTECTING & REINSTALLING FIRE PROTECTION INCLUDING TRIM PLATE & ASSOCIATED SPULCED SAT IS NOT ALLOWED. CONTRACTOR'S CHOICE OF PROVIDING LARGE TRIM PLATES TO COVER LARGER HOLES FOR SAT INSTALLATION OVER ACTIVE HEADS OR SHIELDING DOWN & PRANING EXIST SYSTEM FOR REINSTALLATION HEAD THEN REACTIVATING SYSTEM BY LICENSED SPRINKLER INSTALLER.



1 SOFFIT DETAIL
SCALE: 1/2"=1'-0"
0-8"



1 REFLECTED CEILING PLAN
SCALE: 1/4"=1'-0"
0-4'-0"

PORT CITY ARCHITECTURE
65 NEWBURY STREET
PORTLAND, ME 04101
207.761.9000
info@portcityarch.com
WWW.PORTCITYARCH.COM

CONSULTANTS

PERMIT SET - FOR CONSTRUCTION-

REVISIONS	
No.	Date
1	10/13/2016
2	10/14/2016
3	10/13/2016

GREATER PORTLAND METRO OFFICE RENOVATIONS
PORTLAND, MAINE

RCP

Project Number	16403
Date	October 31, 2016
Drawn by	TS
Checked by	LAS

A1.7

Scale