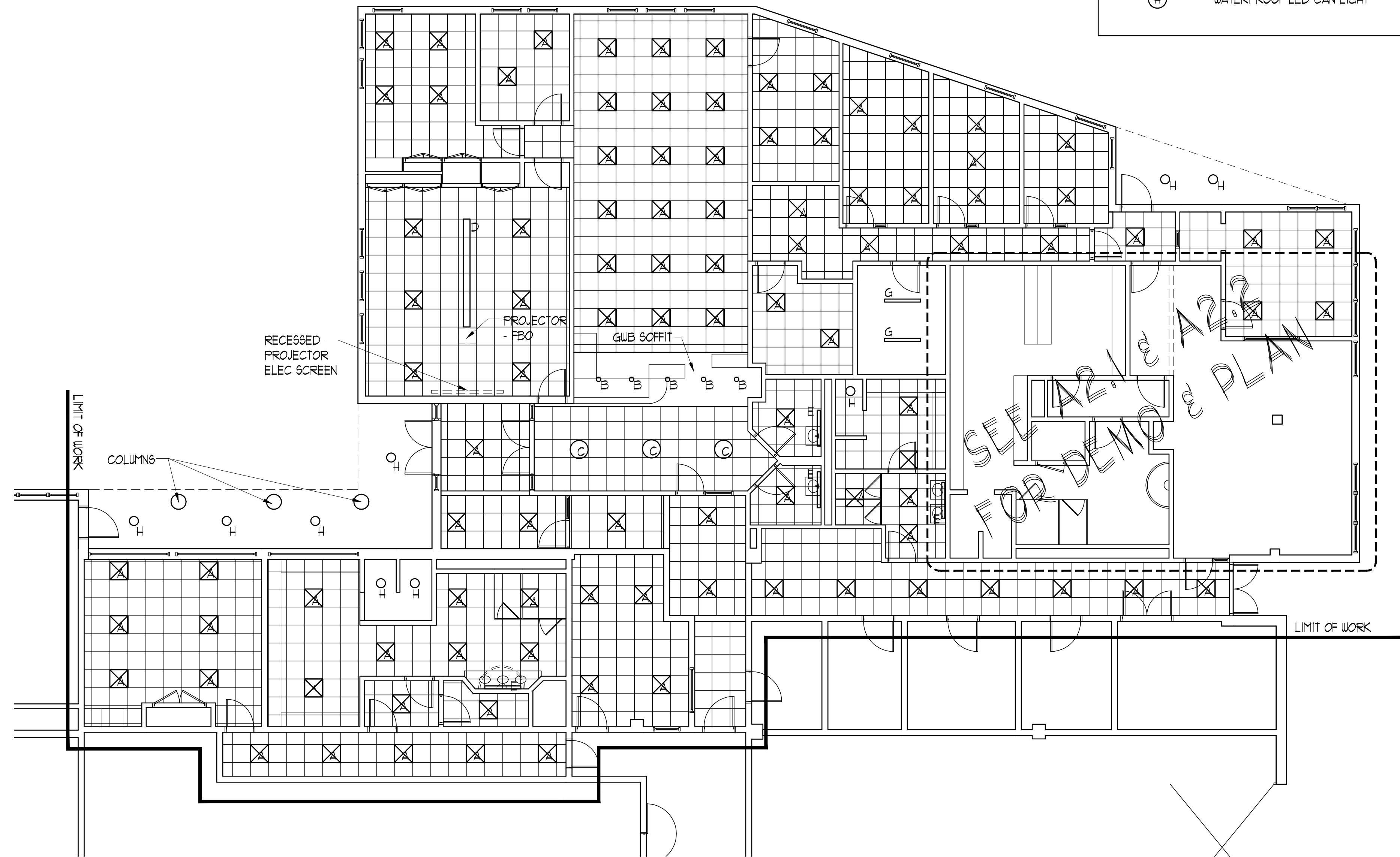
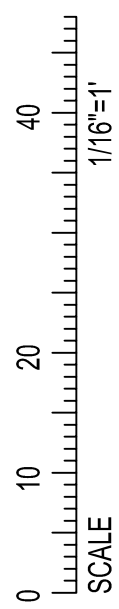
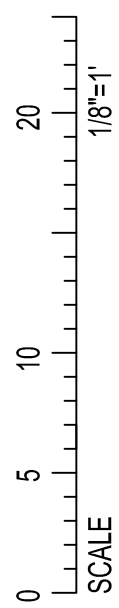
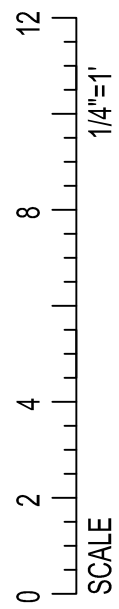
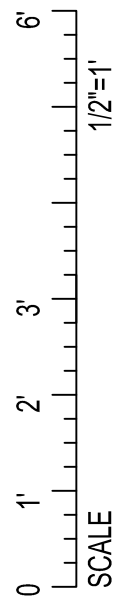
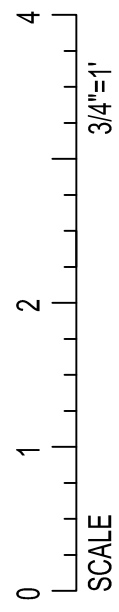
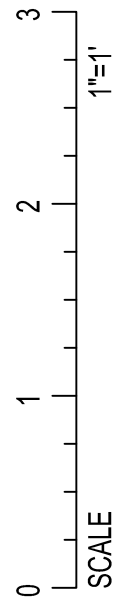


IF THIS SHEET IS NOT 24 X 36 IT IS A REDUCED SCALE PRINT - SCALE ACCORDINGLY



LIGHT KEY

- ⊗ **(A)** 2 x 2 LED LIGHT IN THE SAT
- ⊙ **(B)** 6' LED CAN LIGHT
- **(C)** LOUIS FOLSEN - 15 3/4" FH 4 / 3 PENDANT
- ▭ **(D)** AXIS LIGHTING - 12'-0" SUSPENDED
- ▭ **(E)** TECHLIGHTING - RAE BATH 4'-0"
- ⊙ **(F)** BRUCK - CLASSIC 9 1/2"
- ▭ **(G)** SURFACE APPLIED 8' x 4'-0"
- ⊙ **(H)** WATERPROOF LED CAN LIGHT

1 **OVERALL RCP**
SCALE: 1/8"=1'-0"



PORT CITY ARCHITECTURE

65 NEWBURY STREET
PORTLAND, ME 04101
207.761.9000
info@portcityarch.com
WWW.PORTCITYARCH.COM



CONSULTANTS

PERMIT SET
-FOR CONSTRUCTION-

REVISIONS		
No.	Description	Date

GREATER PORTLAND METRO
PORTLAND, MAINE
OFFICE RENOVATIONS

RCP

Project Number	16403
Date	July 11, 2016
Drawn by	TS
Checked by	LAS

A1.4
Scale