

CURVE DATA

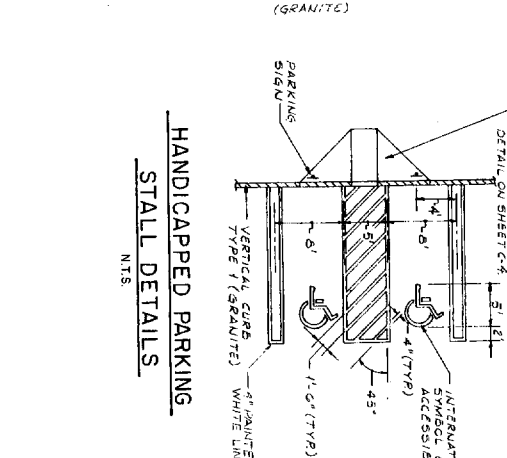
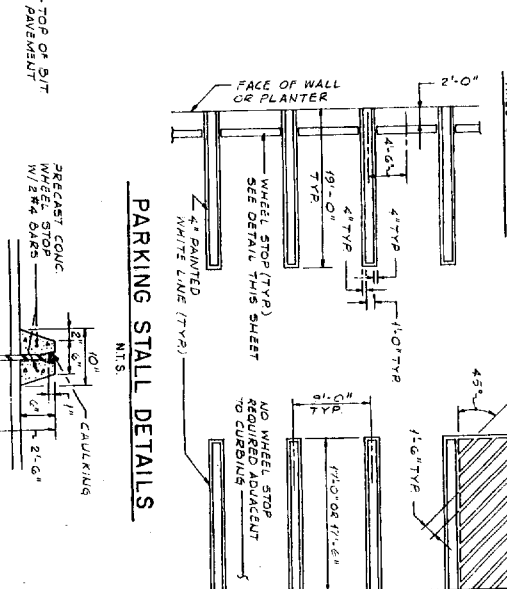
| NO | A | R | T | L |
|------|--------------|-------|--------|--------|
| C-1 | 90°-00'-00" | 1000' | 14.00' | 14.71' |
| C-2 | 90°-00'-00" | 1000' | 14.00' | 14.71' |
| C-3 | 180°-00'-00" | 300' | 3.42' | 3.42' |
| C-4 | 90°-00'-00" | 1000' | 14.00' | 14.71' |
| C-5 | 90°-00'-00" | 900' | 12.57' | 13.14' |
| C-6 | 90°-00'-00" | 200' | 2.07' | 2.14' |
| C-7 | 45°-00'-00" | 1500' | 6.21' | 6.53' |
| C-8 | 45°-00'-00" | 1500' | 6.21' | 6.53' |
| C-9 | 90°-00'-00" | 1000' | 14.00' | 14.71' |
| C-10 | 17°-53'-13" | 1600' | 7.77' | 15.41' |
| C-11 | 90°-00'-00" | 1600' | 14.00' | 25.11' |
| C-12 | 90°-00'-00" | 800' | 8.00' | 12.57' |
| C-13 | 90°-00'-00" | 1000' | 14.00' | 14.71' |
| C-14 | 90°-00'-00" | 1000' | 14.00' | 14.71' |
| C-15 | 90°-00'-00" | 500' | 3.00' | 4.71' |
| C-16 | 60°-13'-37" | 2000' | 11.60' | 16.54' |
| C-17 | 53°-07'-40" | 2000' | 10.00' | 14.54' |
| C-18 | 64°-46'-19" | 500' | 4.50' | 7.40' |
| C-19 | 54°-13'-41" | 500' | 5.45' | 8.31' |
| C-20 | 30°-00'-00" | 500' | 5.00' | 7.80' |
| C-21 | 90°-00'-00" | 500' | 5.00' | 7.80' |
| C-22 | 87°-14'-00" | 1550' | 25.33' | 50.74' |
| C-23 | 87°-14'-00" | 1550' | 27.19' | 54.35' |

LEGEND - CURBING

- N = NEW VERTICAL CURB, TYPE 4 (GRANITE)
- E = EXIST CURB TO REMAIN IN PLACE
- RRC = RESET RELOCATED CURBING REMOVED FROM OTHER LOCATIONS
- = REMOVE CURB & RESET IN OTHER LOCATION
- = NEW VERTICAL CURB, TYPE 4 (GRANITE)
- = NEW VERTICAL CURB, TYPE 1 (GRANITE)

NOTES:

- CONSTRUCTION BASELINE IS A 500' OFFSET LINE FROM PROPERTY LINE (SEE SHEET C-4)
- FOR TYPICAL SECTIONS, SEE SHEET C-5
- FOR LANDSCAPING, OTHER SITE FEATURES, SEE SHEET L-1
- FOR ADDITIONAL SITE DETAILS, SEE SHEET C-4



LEGEND - SIGNS, FENCES

- SC = SMALL CURB ONLY
- 27'-1" NO PARKING
- H/A HANDICAPPED PARKING - SEE DETAIL SHEET C-4
- * 22" MANUAL OR UNIVERSAL DEVICES
- WALL W/ C.L.R.
- 12" x 18" SIGN, 2" HIGH GREEN BACKGROUND WITH DOUBLE HEADED ARROW BELOW

Greater Portland Transit District

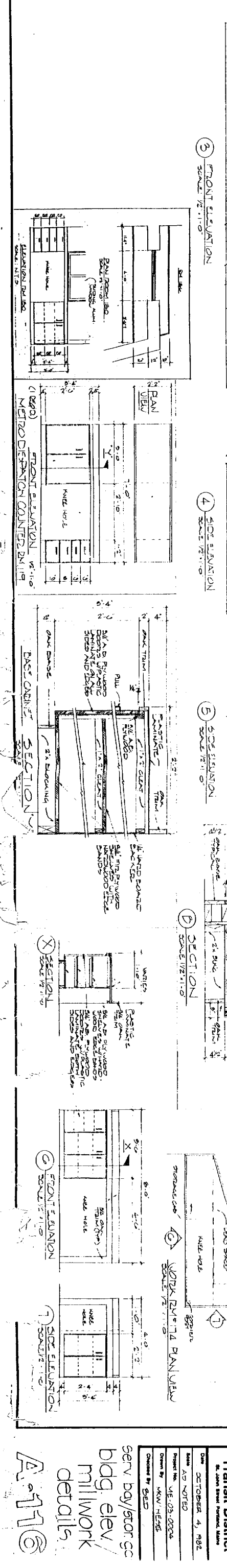
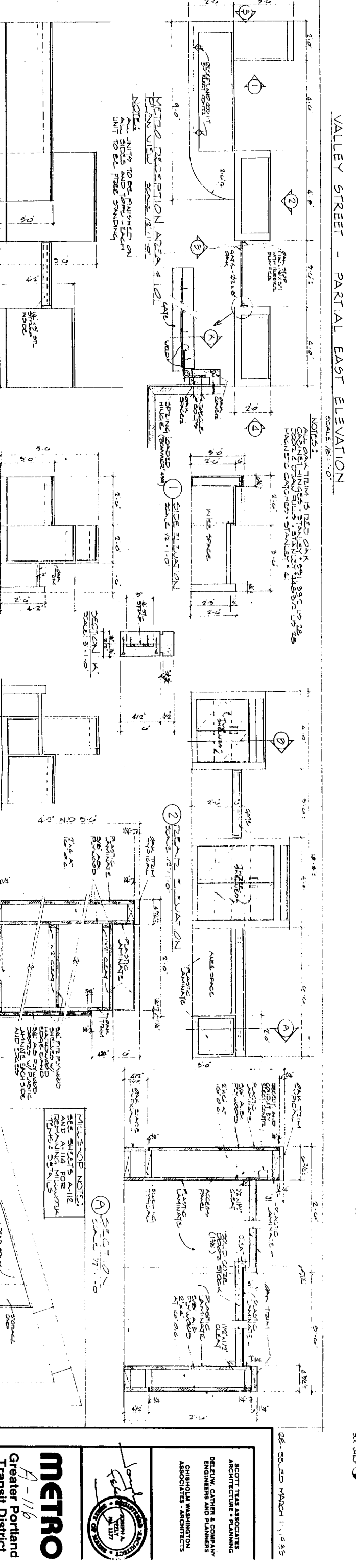
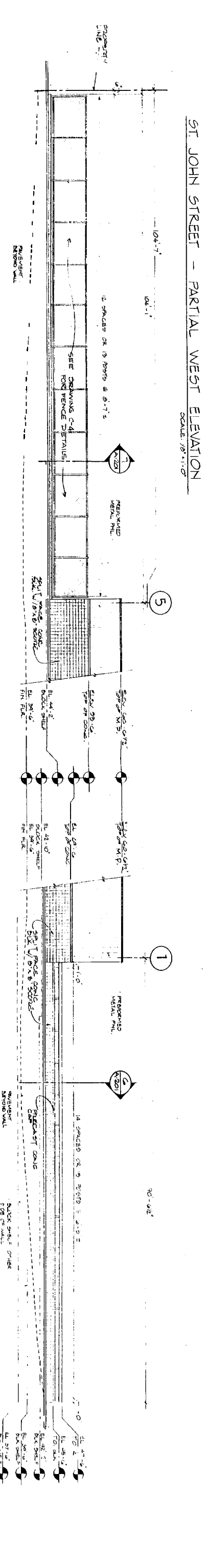
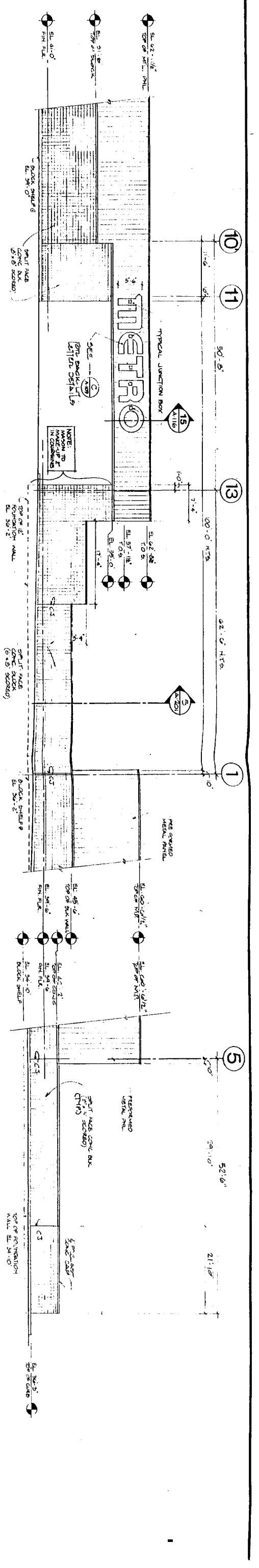
METRO

DATE: 3/7/25
 SCALE: AS NOTED
 PROJECT NO: ME-03-0004
 DRAWN BY: R. J. H. & J. E.
 CHECKED BY: J. F. D.

SCOTT TEAS ASSOCIATES ARCHITECTURE + PLANNING
 DELEW, CATHER & COMPANY ENGINEERS AND PLANNERS
 CRISHAW WASHINGTON ASSOCIATES - ARCHITECTS

NOTES (CONT.):

- SEE GREATER PORTLAND TRANSIT DISTRICT DEED BOOK 6 CONG. SURVEY MAP FOR PLANNING MAPS WHEN NOTED ON PLAN. SEE SHEET C-4 FOR DETAILS.



02-85-ED MARCH 11, 1985

SCOTT TEAS ASSOCIATES
ARCHITECTURE & PLANNING
DELEW, CATHEN & COMPANY
ENGINEERS AND PLANNERS
CHISHOLM WASHINGTON
ASSOCIATES - ARCHITECTS

METRO
A-116
Greater Portland
Transit District
St. John Street Portland, Maine

DATE: OCTOBER 4, 1982
PROJECT AS NOTED
DRAWN BY: WJ-03-0024
CHECKED BY: MKN/HEAD
DESIGNED BY: GED

serv bay/stor gc
bldg elev/
millwork
details.

A-116