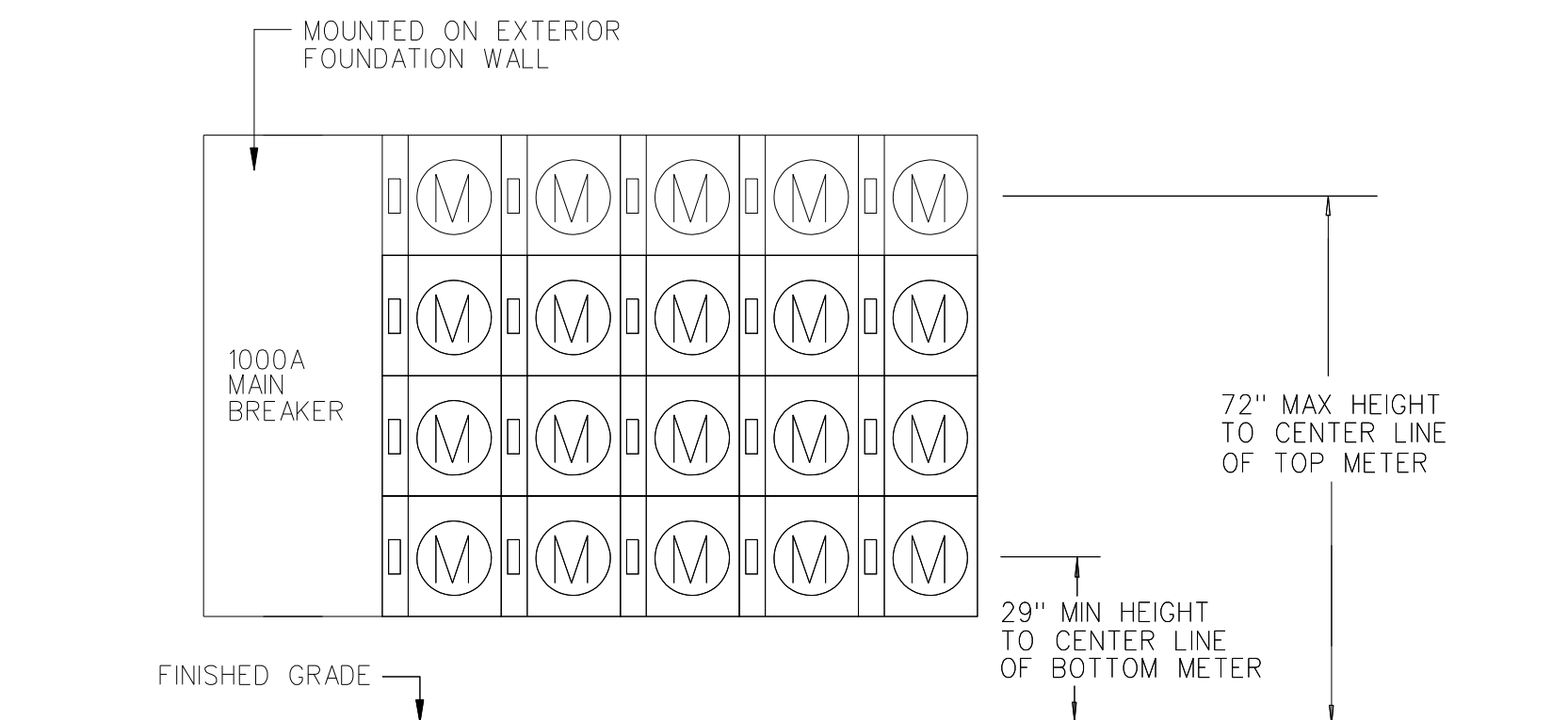


**LIGHTING FIXTURE SCHEDULE**

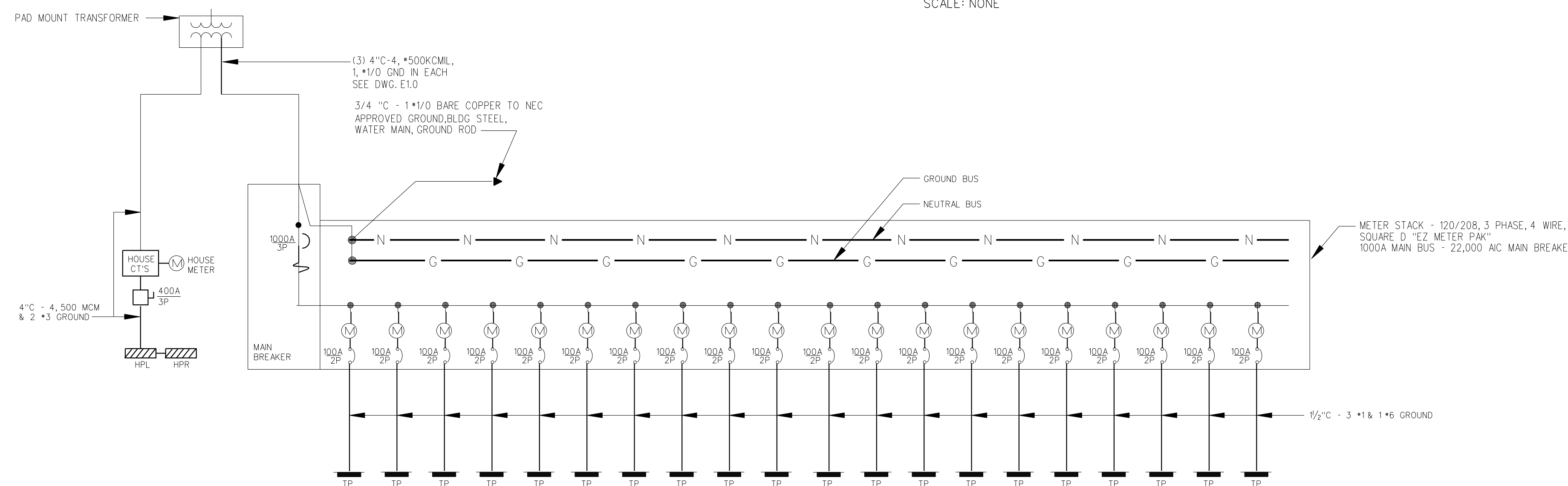
TYPE	DESCRIPTION	LAMPS QUANTITY & TYPE	REMARKS
A	TERON *KEC226QE	(2) 26W CF 35K	CEILING SURFACE DECORATIVE BOWL, NICKEL TRIM
B	TERON *KE213 HPF	(2) 13W CF 35K	WALL SCONCE, WHITE STEEL FACIA, CHROME BANDS. MOUNT AT 5'-0" TO BOTTOM
C	NOT USED		
D	LITHONIA *WFL2-100M-FT-120-DNA	(1) 100W MH	WALL FIXTURE. UL WET RATING
E	LITHONIA *LQM-S-W-3-R-120-EL N	LED FURNISHED WITH FIXTURE	EXIT SIGN WITH BATTERY
F	NOT USED		
G	LITHONIA *2UC-17-120-GEB	(1) F17T8/SPX35	UNDERCABINET LIGHT. MOUNT 1" FROM BACK WALL
H	PROGRESS *P7147-15EB	(2) F17T8/SPX35	WALL FIXTURE. MOUNT OVER MIRROR
J	LITHONIA *WC-117-A12-120-GEB	(1) F17T8/SPX35	CLOSET LIGHT. WALL MOUNT OVER DOOR
K	LITHONIA *LB-232-120-GEB	(2) F32T8/SPX35	FLUORESCENT WRAPAROUND. CEILING SURFACE
L	LITHONIA *AHZ-100-7-AR-120	(1) 100W MH	RECESSED OPEN DOWNLIGHT. UL DAMP RATING
M	LITHONIA *TSM-232-120-ES-GEB	(2) F32T8/SPX35	FLUORESCENT STRIP, SIDE MOUNT. MOUNT TO ROOF FRAMING IN ATTIC
N	LITHONIA *VR1B 26TRT 120 GLR LPI	(1) 26W CF 35K	SURFACE MOUNT IN ELEVATOR PIT
P	KENALL *MR13FL-S-MW-26Q-1-120	(1) 13W CF 35K	SURFACE MOUNT AT PATIO
Q	LITHONIA *WSR-2/42 TRT MD 120	(2) 42W CF 35K	WALL MOUNTED MOTION SENSOR LIGHT
AA	USA ARCHITECTURAL LIGHTING *AER-IV-100MH-208-1-DBM	(1) 100W MH	POLE: USA ARCHITECTURAL LIGHTING *SNTS 144-11 DBM

**SYMBOL LEGEND**

- LOAD CENTER, 120/240V, 1PHS, 3WIRE
- Ⓜ ELECTRIC MOTOR DRIVEN EQUIPMENT, HP SHOWN
- SM MANUAL MOTOR STARTER SWITCH WITH THERMAL OVERLOAD DEVICE, MOUNTED AT UNIT
- Ⓜ JUNCTION BOX - "H" DENOTES RANGE HOOD, "D" DENOTES DISPOSAL
- A, D, F, O } LIGHTING FIXTURES- CAPITAL LETTERS DENOTE TYPE AS PER LIGHTING FIXTURE SCHEDULE. LOWER CASE LETTERS INDICATE SWITCH CONTROL.
- Ⓜ DISCONNECT SWITCH - 250 VOLT - SIZE AND NUMBER OF POLES AS INDICATED ON DRAWING
- Ⓜ COMBINATION MOTOR STARTER - WITH AUXILIARY CONTACTS AND HAND-OFF-AUTO SWITCH AND RED RUN LIGHT PROVIDED AND INSTALLED BY E.C. - UNLESS OTHERWISE NOTED.
- VFD VARIABLE FREQUENCY DRIVE - PROVIDED BY M.C., INSTALLED AND WIRED BY E.C.
- RACEWAY & WIRING OR MC CABLE RUN CONCEALED IN WALLS/CEILINGS.
- - - RACEWAY & WIRING RUN EXPOSED
- - - RACEWAY & WIRING RUN CONCEALED UNDER FLOOR
- 1 3 TPI ← HOME RUN TO PANEL - ARROWS INDICATE QUANTITY OF CIRCUITS- NUMERALS DENOTE CIRCUIT NUMBERS
- Ⓜ MOTION DETECTOR - WATT STOPPER \*EW-100-120
- S SINGLE POLE SWITCH, 120 VOLT, 20 AMP, SPEC GRADE, GROUNDING TYPE, MOUNT 48" AFF, 3-3-WAY, P-PILOT LOWER CASE LETTER INDICATES FIXTURE OR CONTROLLED LOAD. PILOT LIGHT SWITCHES SHALL BE PROVIDED W/ ENGRAVED NAMEPLATE IDENTIFYING USE.
- S<sub>B</sub> BURNER SAFETY SWITCH - PROVIDE WITH RED PLATE
- Ⓜ PILOT LIGHT FOR ATTIC LIGHTING - PROVIDE WITH ENGRAVED NAMEPLATE IDENTIFYING USE.
- E EXIT LIGHT FIXTURE - UNSWITCHED - SEE LIGHTING FIXTURE SCHEDULE
- Ⓜ SELF CONTAINED EMERGENCY LIGHTING UNIT W/ 2 HEADS. DUAL-LITE \*EZ-2 - 6 VOLT D.C., 10.8 WATTS FOR 90 MINUTES
- Ⓜ DUPLEX RECEPTACLE- 20A, 125V SPEC GRADE GROUNDING TYPE AND MATCHING PLATE - MOUNT 18" AFF. "R" DENOTES REFRIGERATOR - "D" DENOTES DISPOSAL - "DW" DENOTES DISHWASHER
- Ⓜ DUPLEX RECEPTACLE- 20A, 125V SPEC GRADE GROUNDING TYPE AND MATCHING PLATE - MOUNT 18" AFF. BOTTOM RECEPTACLE SWITCHED
- GF DUPLEX RECEPTACLE- GROUND FAULT OUTLET 20A, 125V- WITH MATCHING PLATE FURNISHED W/ OUTLET. FLUSH MOUNTED 45" AFF EXCEPT AS NOTED.
- Ⓜ RANGE OUTLET 50 AMP, 250 VOLT, GROUNDING TYPE FLUSH MOUNTED 18" AFF
- WP WEATHERPROOF
- FACP FIRE ALARM CONTROL PANEL
- 15 S<sub>D</sub> STROBE ONLY IN BATHROOM. NUMERAL DENOTES CANDELA RATING.
- 135° 200° Ⓜ SYSTEM CONNECTED FIXED TEMPERATURE HEAT DETECTOR
- Ⓜ SMOKE DETECTOR, PHOTOELECTRIC TYPE, UNSWITCHED, SYSTEM CONNECTED "S" DENOTES WITH STROBE LIGHT AND BATTERY BACKUP - SEE SPECIFICATION "SB" DENOTES WITH SOUNDER BASE
- F FIRE ALARM PULL STATION - MOUNT 48" AFF
- MH 30 FIRE ALARM AUDIO/VISUAL, MOUNT 6'-8" AFF - NUMERAL DENOTES CANDELA RATING
- Ⓜ TELEPHONE CONNECTION MOUNT 18" AFF - W/1-4 PAIR CABLE TO TEL. BACKBOARD
- △ DATA OUTLET DEVICE AND INDIVIDUAL CAT 5E CABLE BACK TO TELEPHONE BACKBOARD WALL PLATE AND CABLE BY E.C. MOUNT AT 18" AFF
- TV OUTLET DEVICE AND INDIVIDUAL CABLE BACK TO CTV ENTRANCE LOCATION WALL PLATE AND CABLE BY E.C. MOUNT AT 18" AFF
- Ⓜ PHOTOCCELL - SEE WIRING SCHEMATIC ON DWG E1.1
- LC LIGHTING CONTACTOR - SEE WIRING SCHEMATIC ON DWG E1.1
- TC TIME CLOCK - SEE WIRING SCHEMATIC ON DWG E1.1
- IP INTERCOM PANEL IN UNIT
- Ⓜ DOOR RELEASE



**METER STACK ELEVATION - (20 METERS)**  
SCALE: NONE



**ONE LINE DIAGRAM FOR METER STACK**  
SCALE: NONE