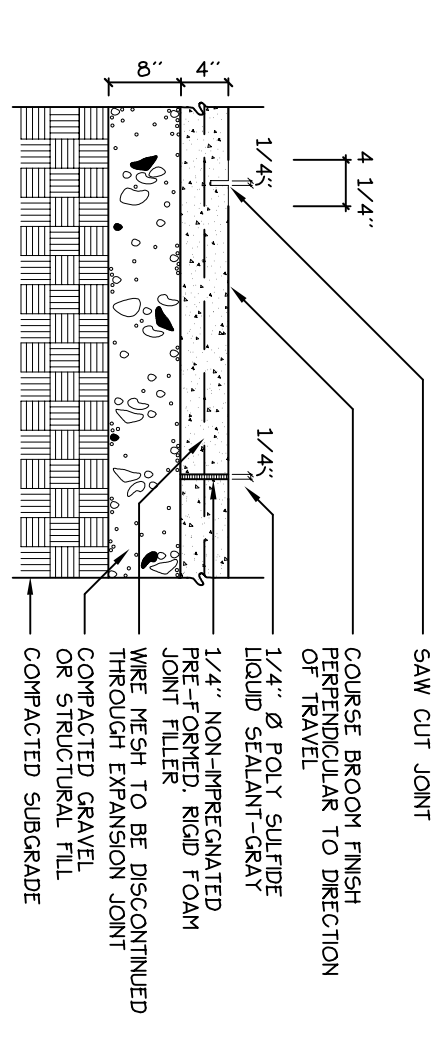
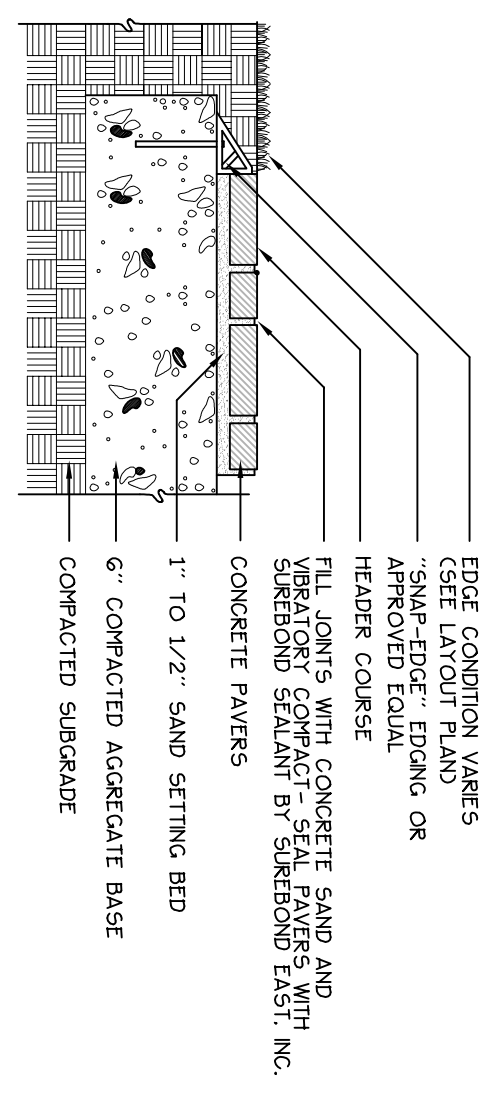


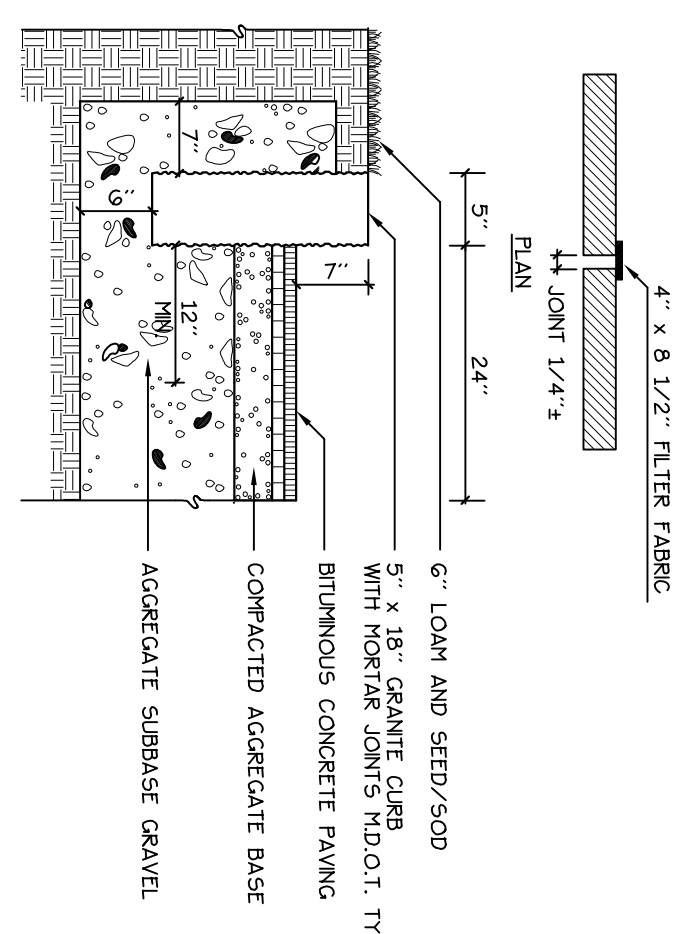
1 BITUMINOUS PAVEMENT - ROADS + PARKING
NOT TO SCALE



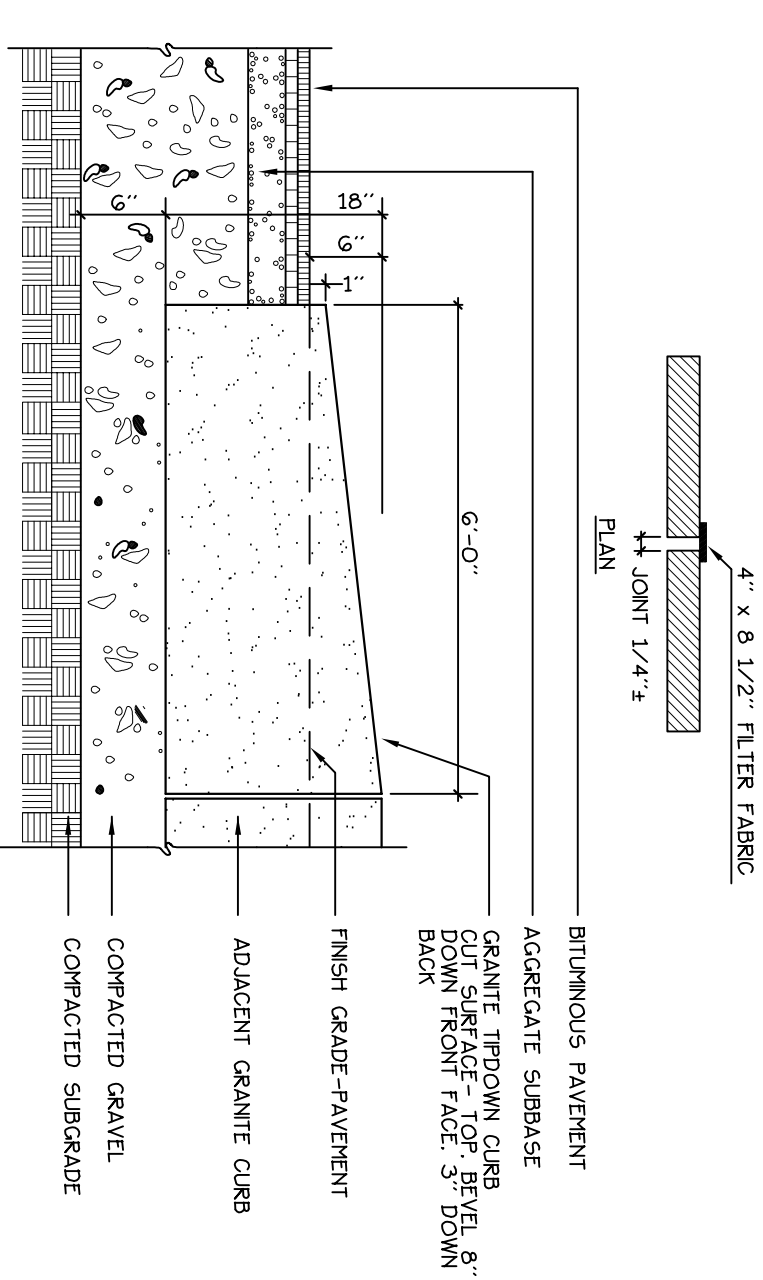
2 CONCRETE WALK
NOT TO SCALE



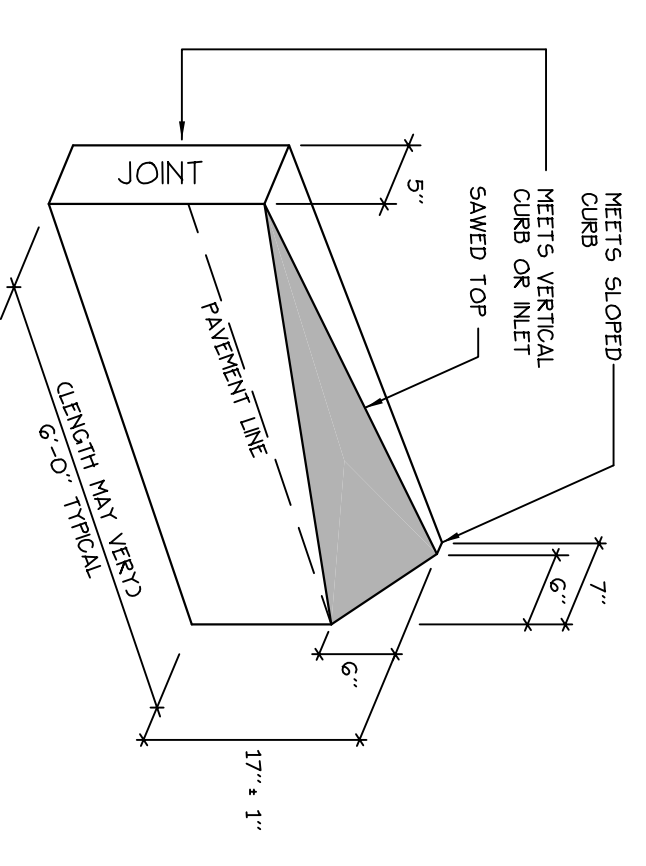
3 CONCRETE PAVERS
NOT TO SCALE



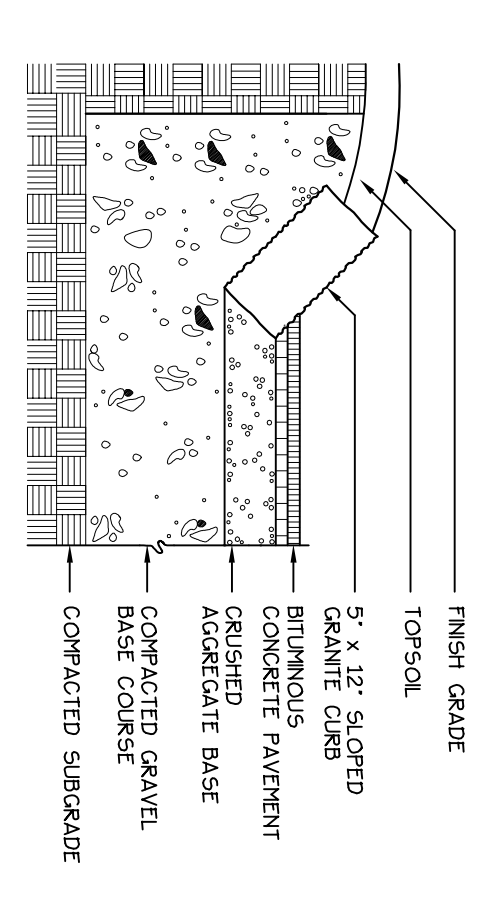
4 VERTICAL GRANITE CURB
NOT TO SCALE



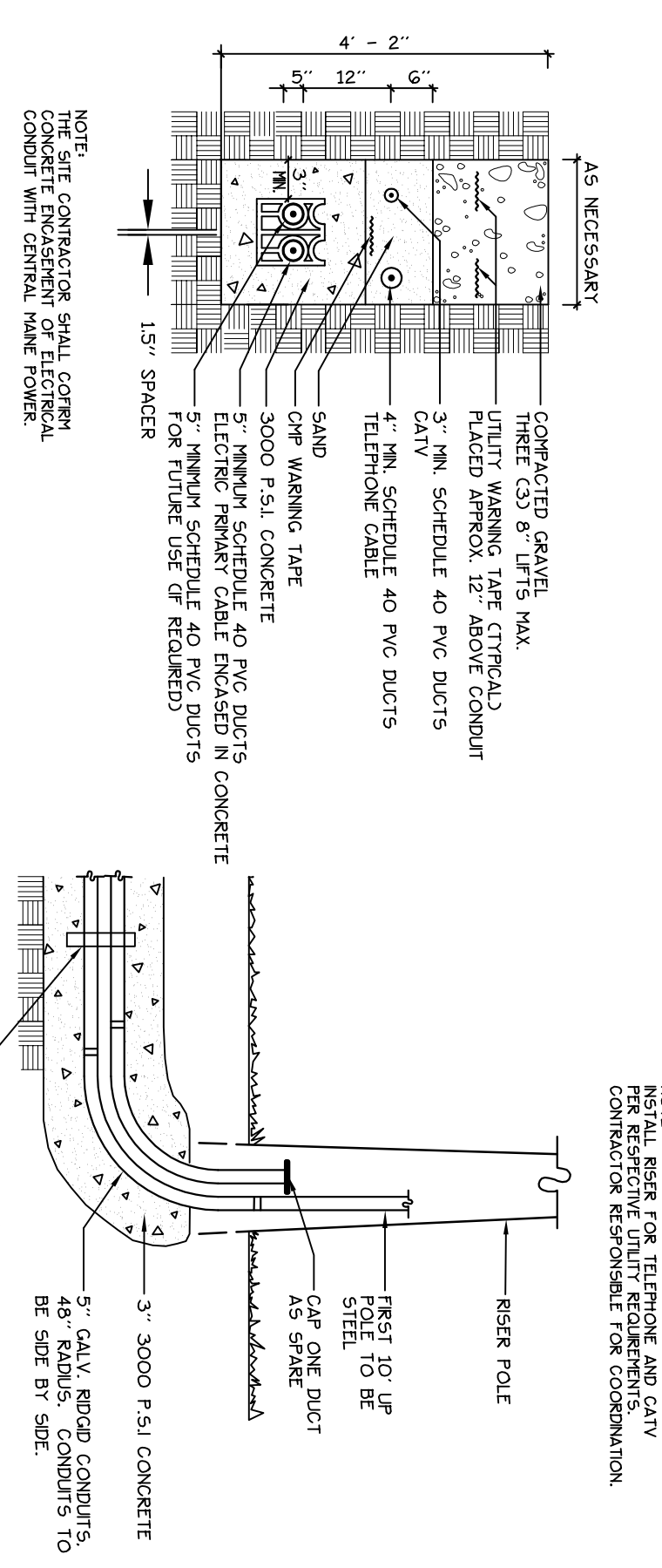
5 GRANITE TIP-DOWN CURB
NOT TO SCALE



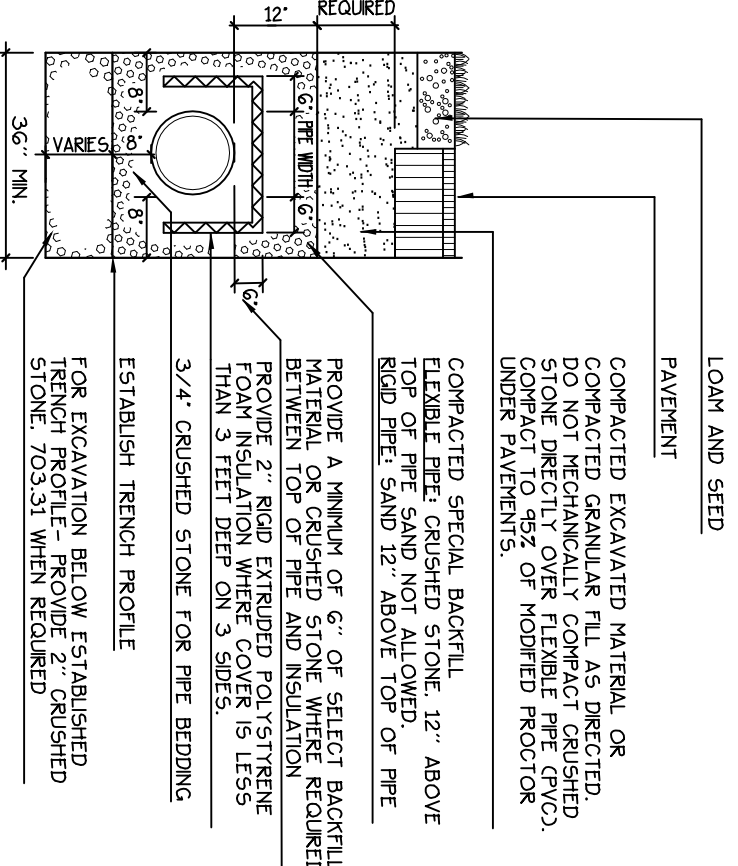
6 TRANSITIONAL CURB END
NOT TO SCALE



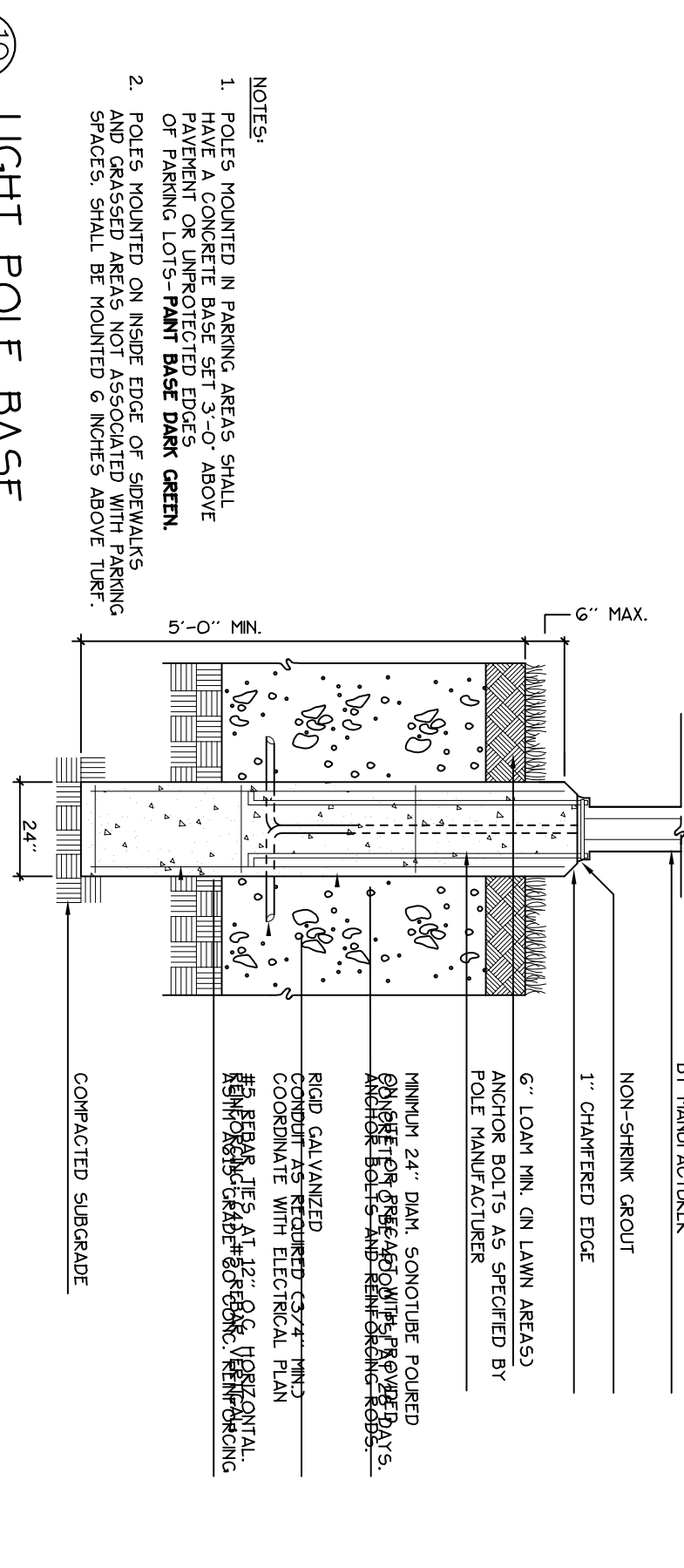
7 SLOPED GRANITE CURB
NOT TO SCALE



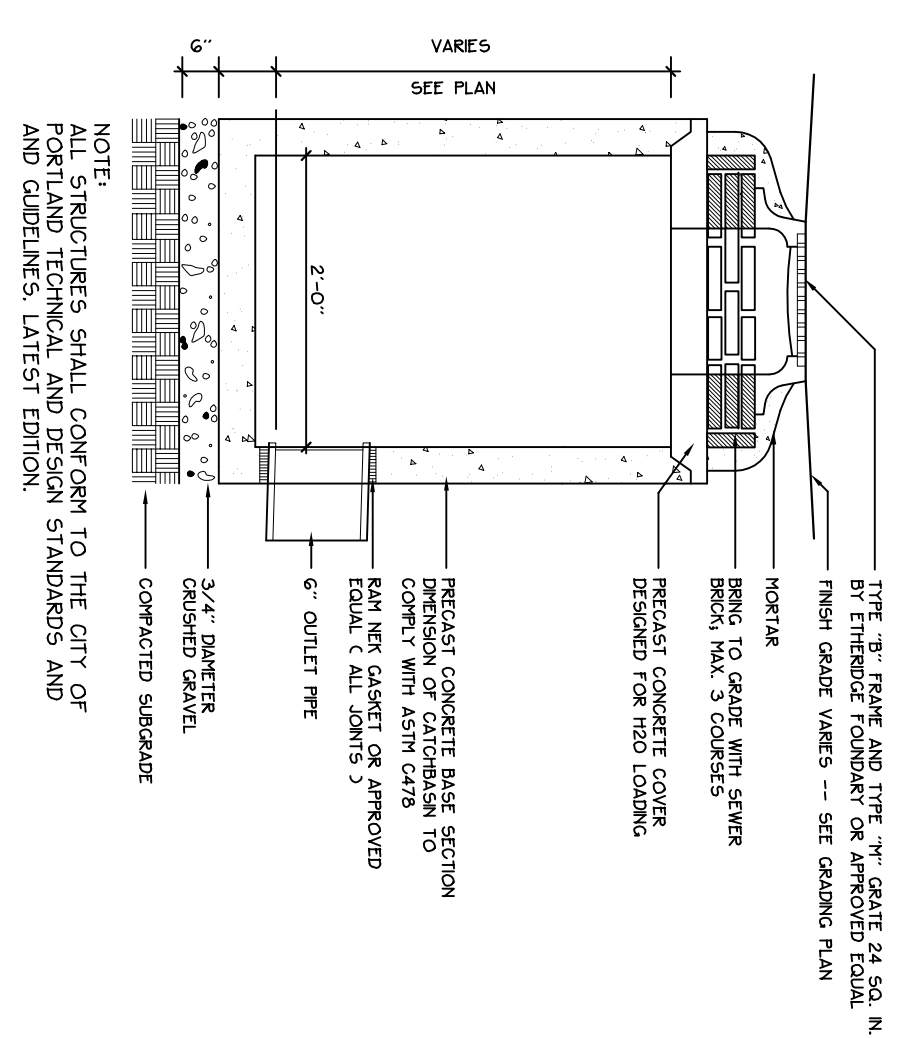
8 ELECTRICAL, TELEPHONE + CABLE T.V. TRENCH
NOT TO SCALE



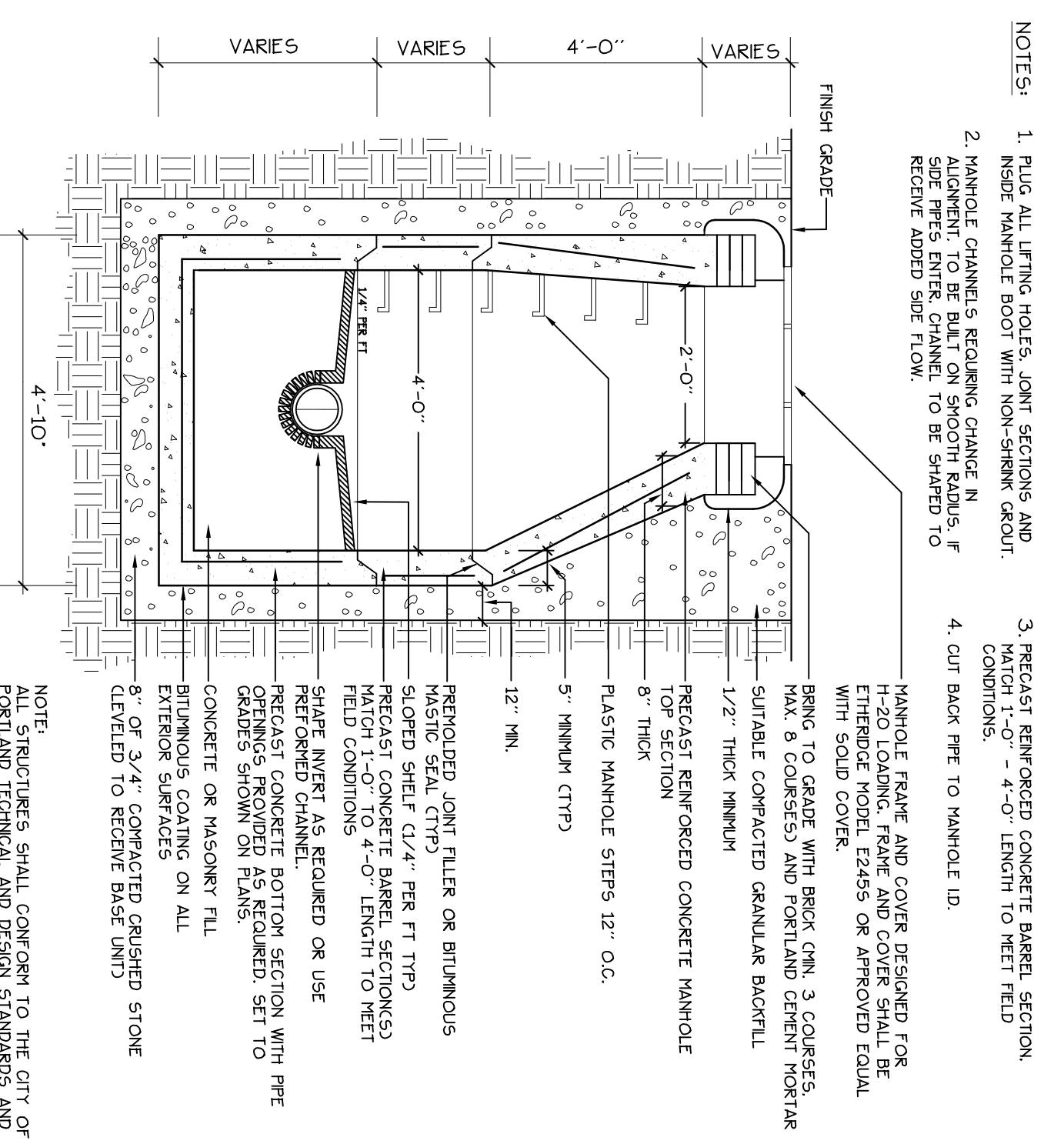
9 PIPE TRENCH DETAIL
NOT TO SCALE



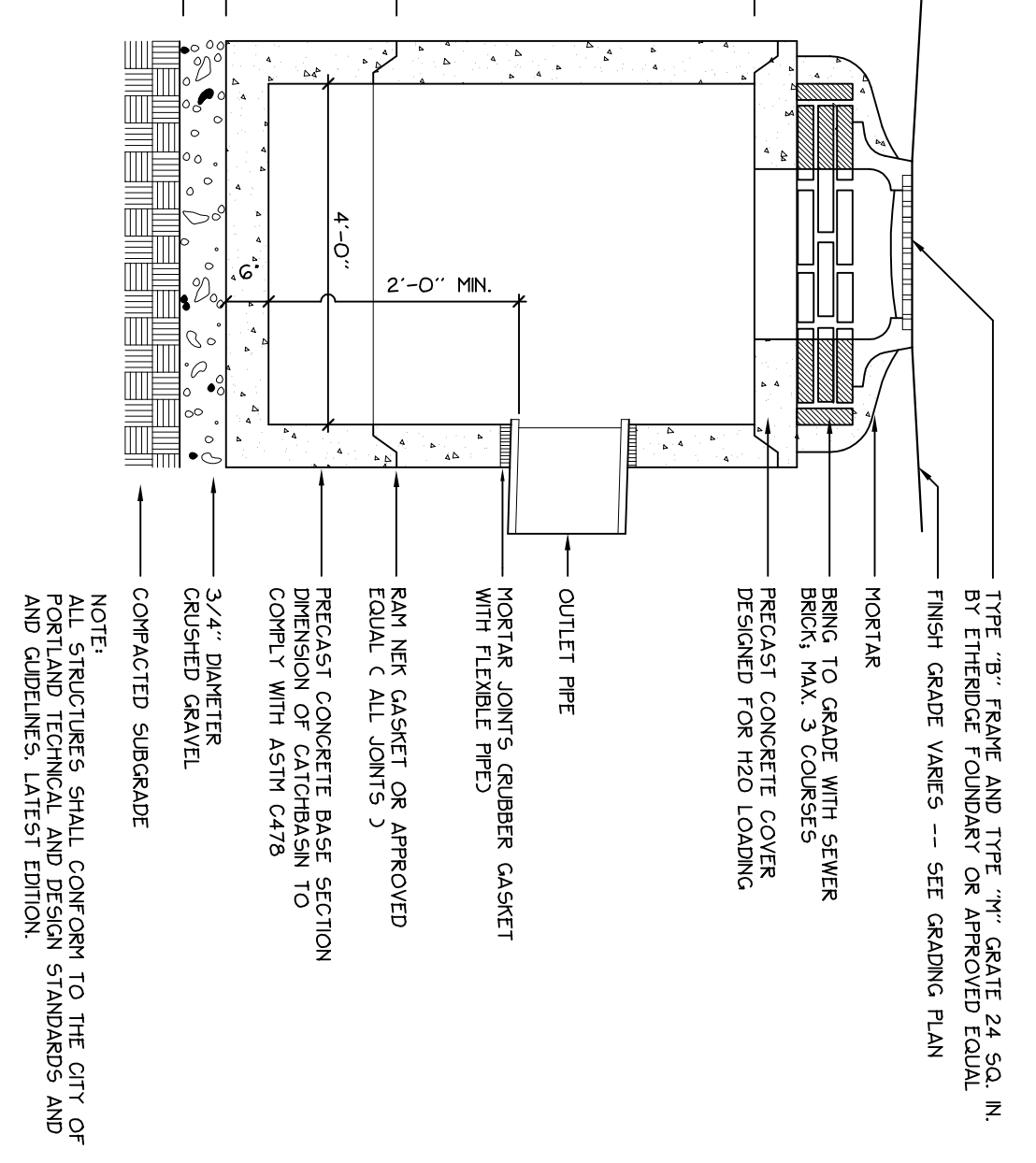
10 LIGHT POLE BASE
NOT TO SCALE



11 PRECAST CONCRETE DRAIN INLET
NOT TO SCALE



12 PRECAST CONCRETE MANHOLE
NOT TO SCALE



13 PRECAST CONCRETE CATCHBASIN
NOT TO SCALE

Prepared For:
Applicant:
AVESTA FORE RIVER HOUSING, LP
307 Cumberland Avenue
Portland, Maine 04101
Tel: (207) 553-7777

Prepared By:
MITCHELL & ASSOCIATES
100 State Street
Portland, Maine 04101
Tel: (207) 774-4277

FORE RIVER APARTMENTS

63 Frederic Street Portland, Maine

Date: **FEBRUARY 21, 2005**

Revisions:

Title: **SITE DETAILS**

Scale:

North:

Sheet No.: **4**