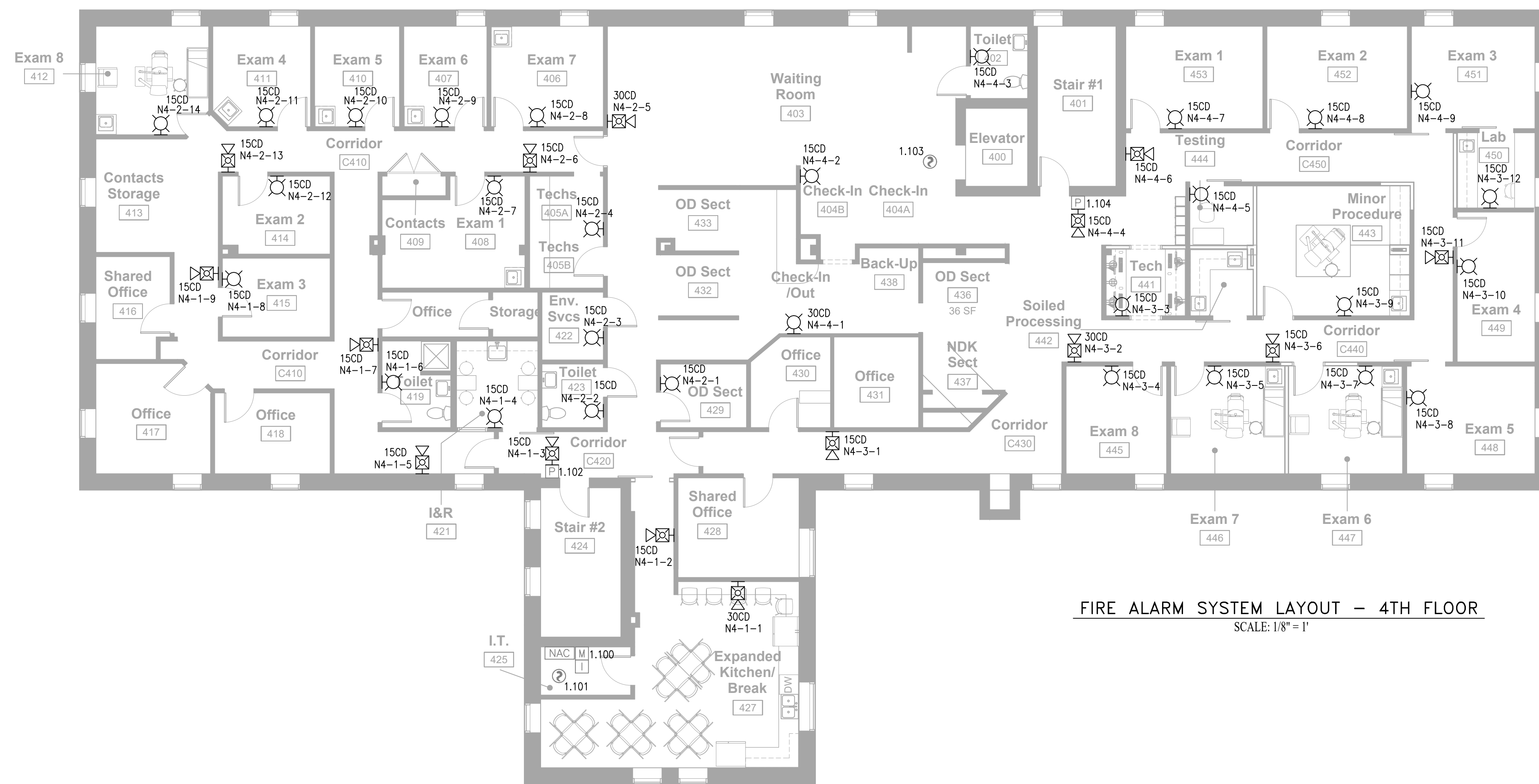


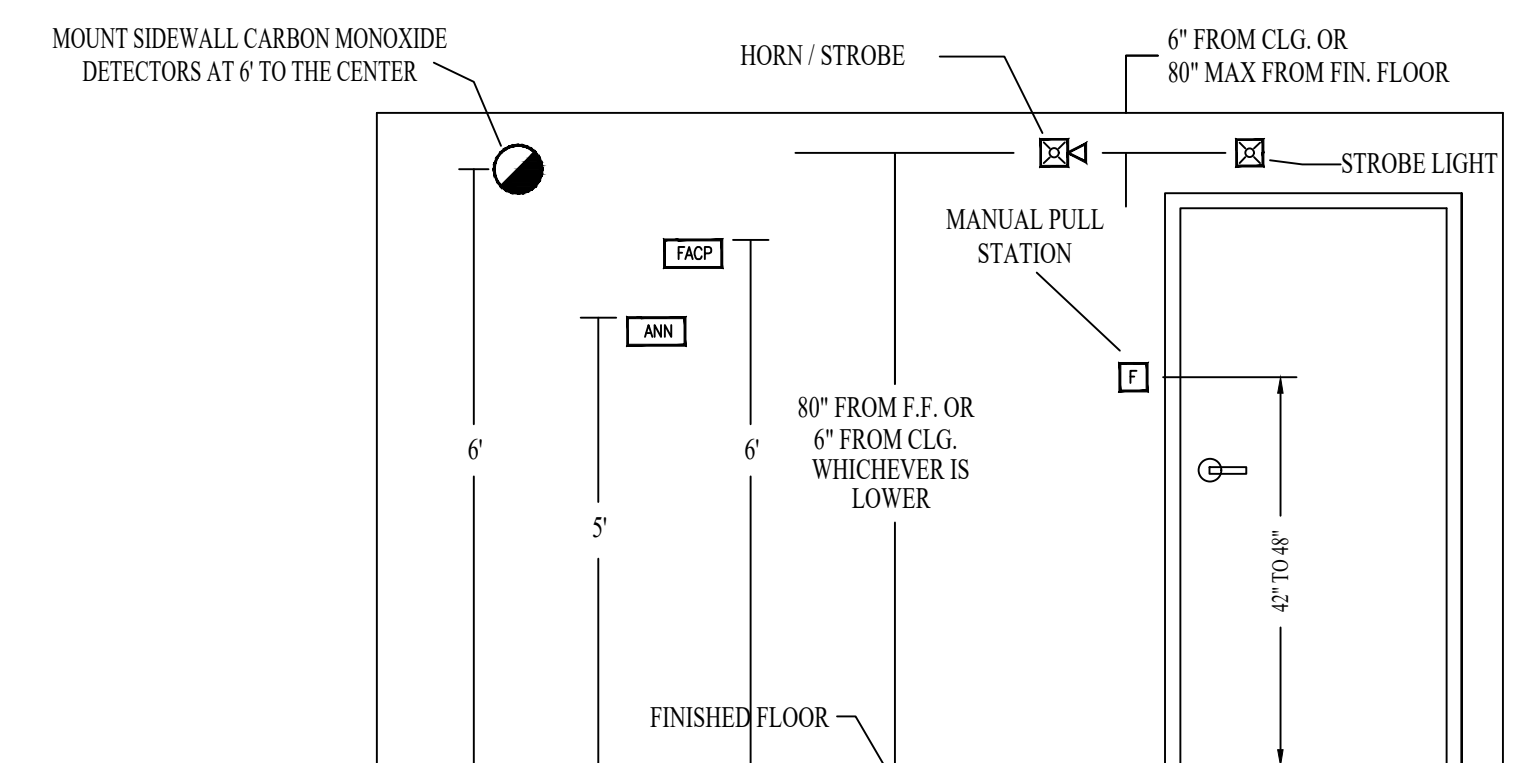
FIRE ALARM SYSTEM LAYOUT - 3RD FLOOR
SCALE: 1/8" = 1'

GENERAL NOTES:
INSTALLATION SHALL COMPLY WITH NFPA 72 AND THE NATIONAL ELECTRIC CODE.
ALL WIRING SHALL BE FREE OF FAULTS (OPEN, GROUND, SHORT) PRIOR TO CONNECTING TO FIRE ALARM PANEL.
CIRCUIT BREAKER LOCK SHALL BE INSTALLED AND CIRCUIT LABELED IN RED.

SYMBOL LEGEND			
ITEM NO.	SYMBOL	QTY. TOTAL	DESCRIPTION
1	○	10	STANDARD BASE (DB-11) - OCTAGON BOX
2	⊙	1	HEAT DETECTOR (H921) - MOUNTS ON DB-11
3	□	3	LINE ISOLATOR (HLM) - 4" SQUARE
4	DM	1	DUAL MONITOR MODULE (HTRI-D) - 4" SQUARE
5	M	3	MONITOR MODULE (HTRI-S) - 4" SQUARE
6	P	9	PULL STATION (MSM-KD/HTRI-M) - SINGLE GANG
7	RM	4	INPUT/OUTPUT MODULE (HTRI-R) - 4" SQUARE
8	⊙	9	SMOKE DETECTOR (OH921) - MOUNTS ON DB-11
9	HXX	53	HORN/STROBE (2H-MC-R) - SINGLE GANG OR 4" SQUARE
10	SXX	88	STROBE (2R-MC-R) - SINGLE GANG OR 4" SQUARE
11	ANN	1	ANNUNCIATOR (FT-2015)
12	FACP	1	FIRE ALARM CONTROL PANEL (FC-922)
13	NAC	3	NAC PANEL (PAD-4)

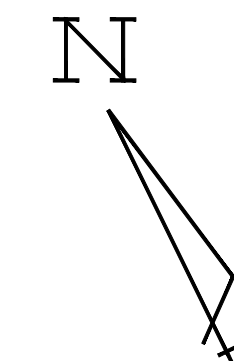


FIRE ALARM SYSTEM LAYOUT - 4TH FLOOR
SCALE: 1/8" = 1'



DEVICE ELEVATION DETAIL
NOT TO SCALE

1/8" = 1' SCALE 2" 4" 8" 16"



DATE	REVISIONS	REQUIRED APPROVALS	MAINE EYE CARE 15 LOWELL ST PORTLAND, ME 04102 CONTRACT WITH: DEBLOIS ELECTRIC EASTERN FIRE <small>FIRE PROTECTION CONTRACTORS AND ENGINEERS</small> <small>Home Office: 170 Edgemoor Ave., P.O. Box 1390, Auburn, ME 04210-1390, 207-584-1507</small> <small>Satellite Office: 400 Barrow St., Bangor, ME 04401, 207-942-8014</small>	FIRE ALARM SYSTEM
		OWNER / ARCHITECT STATE FIRE MARSHAL LOCAL FIRE MARSHAL OWNERS INSURANCE CO. DRAWN BY CRM CHECKED BY CONTRACTOR LICENSE #		