

Jun 27, 2008 - 11:28am

H:\Master Proj Files\2\Maine Eye Center - 1st Floor - MEC-PLAN.dwg



ARCHITECTS

49 DARTMOUTH STREET
PORTLAND, MAINE 04101
207-775-1059
www.pdtarchs.com

COPYRIGHT 2008
PDT Architects

Reuse or reproduction of the
contents of this document is not
permitted without written
permission of PDT Architects.

Maine Eye Center Lasik/Lobby Renovations

PORTLAND, MAINE

JOB NO.
08-046

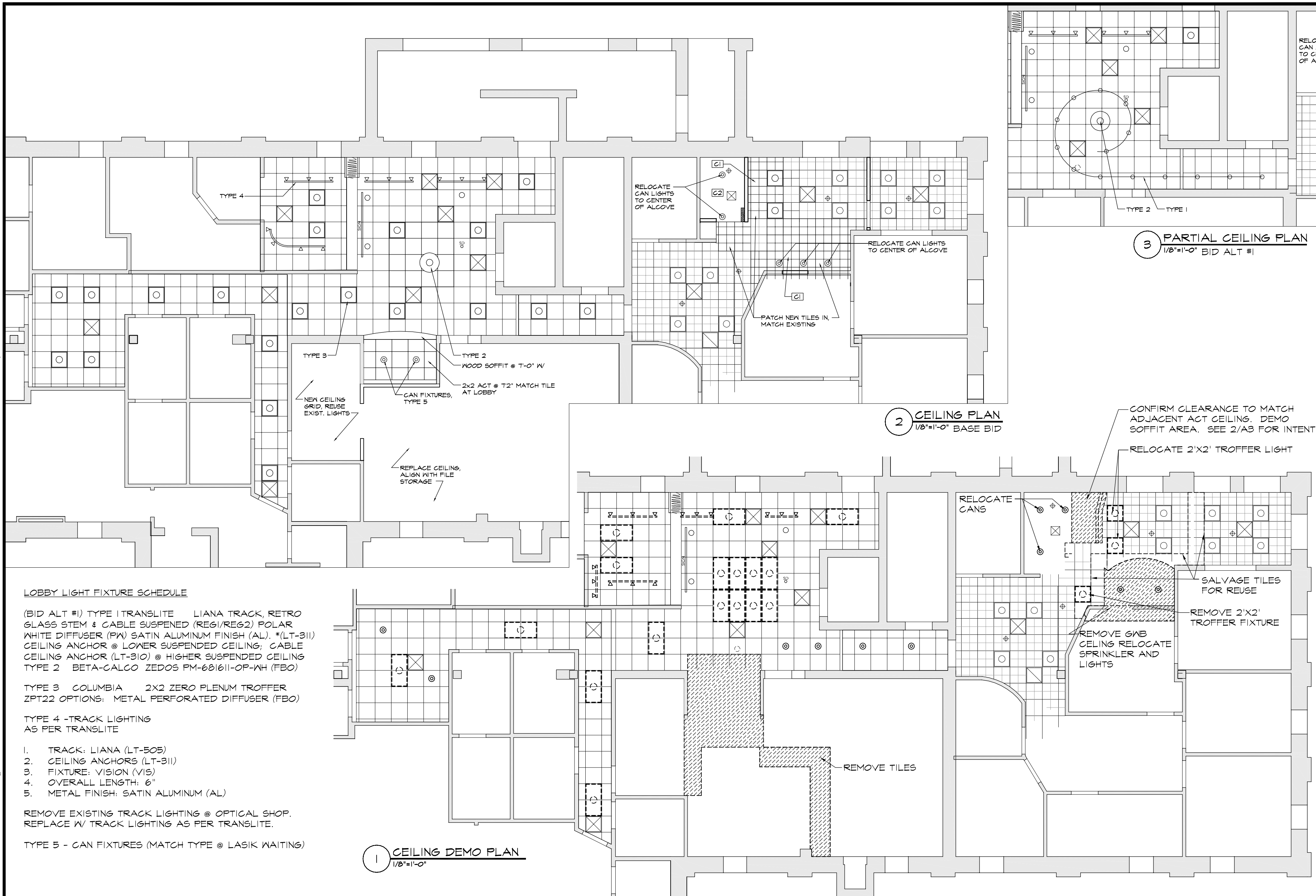
DRWN. CHK
AJR

SCALE:
AS NOTED

ISSUE
09 JUNE 2008

TITLE
DEMO AND NEW
CEILING PLAN,
AND NOTES

SHEET
A3



LOBBY LIGHT FIXTURE SCHEDULE

(BID ALT #1) TYPE 1 TRANSLITE LIANA TRACK, RETRO GLASS STEM & CABLE SUSPENDED (REG1/REG2) POLAR WHITE DIFFUSER (PW) SATIN ALUMINUM FINISH (AL). *(LT-311) CEILING ANCHOR @ LOWER SUSPENDED CEILING; CABLE CEILING ANCHOR (LT-310) @ HIGHER SUSPENDED CEILING
TYPE 2 BETA-CALCO ZEDOS PM-681611-OP-WH (FBO)

TYPE 3 COLUMBIA 2X2 ZERO PLENUM TROFFER ZPT22 OPTIONS: METAL PERFORATED DIFFUSER (FBO)

TYPE 4 -TRACK LIGHTING AS PER TRANSLITE

1. TRACK: LIANA (LT-505)
2. CEILING ANCHORS (LT-311)
3. FIXTURE: VISION (VIS)
4. OVERALL LENGTH: 6"
5. METAL FINISH: SATIN ALUMINUM (AL)

REMOVE EXISTING TRACK LIGHTING @ OPTICAL SHOP. REPLACE W/ TRACK LIGHTING AS PER TRANSLITE.

TYPE 5 - CAN FIXTURES (MATCH TYPE @ LASIK WAITING)

1 CEILING DEMO PLAN
1/8"=1'-0"

2 CEILING PLAN
1/8"=1'-0" BASE BID

3 PARTIAL CEILING PLAN
1/8"=1'-0" BID ALT #1

4 CEILING DETAIL
1/2"=1'-0"

GRAPHIC LEGEND:

- 24x24 FLUORESCENT, (SM) REPRESENTS SURFACE MOUNTED
- TRACK LIGHTING
- FIRE SPRINKLER
- RECESSED CAN
- CEILING TYPE C2 - 5/8" PAINTED GWB
- MECHANICAL SUPPLY OR RETURN
- AREAS OF CEILING TO BE REMOVED

CEILING TYPES:

- C1 - 24x24 SUSPENDED ACOUSTICAL TILE, MATCH EXISTING
- C2 - 5/8" PTD GWB

CEILING GENERAL NOTES

1. CEILING PLANS SHALL GOVERN OVER ALL OTHER PLANS FOR LOCATION OF FIXTURES AND DIFFUSERS.
2. CEILING PLANS DO NOT SHOW EVERY FIXTURE OR COMPONENT. REFER TO ELECTRICAL, PLUMBING, MECHANICAL AND STRUCTURAL DRAWINGS FOR EXTENT OF ALL CEILING PENETRATIONS AND INSTALLATIONS AND COORDINATE PRIOR TO INSTALLATION.
3. CENTER GRID LAYOUT IN ALL ROOMS UNLESS NOTED OTHERWISE.
4. ALL COMPONENTS MOUNTED IN OR BELOW A SUSPENDED ACOUSTIC CEILING SHALL BE CENTERED IN THE CEILING TILE OR IN THE 2X2 PORTION OF REGULAR TILES. THIS SHALL INCLUDE, BUT NOT BE LIMITED TO, LIGHT FIXTURES, DIFFUSERS, SPEAKERS, AND SPRINKLER HEADS.
5. PRIOR TO THE INSTALLATION OF CEILINGS, ALLOW FOR AN ABOVE-CEILING INSPECTION OF COMPONENTS THAT WILL NOT BE VISIBLE WHEN THE CEILINGS HAVE BEEN INSTALLED
6. SEE A1 FOR GENERAL DEMOLITION NOTES
7. SPRINKLER WORK REQUIRES RECERTIFICATION OF SYSTEM.

