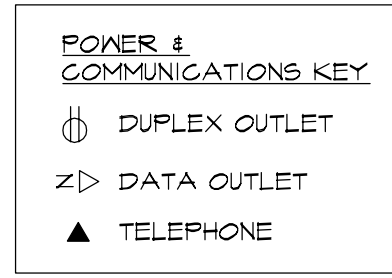
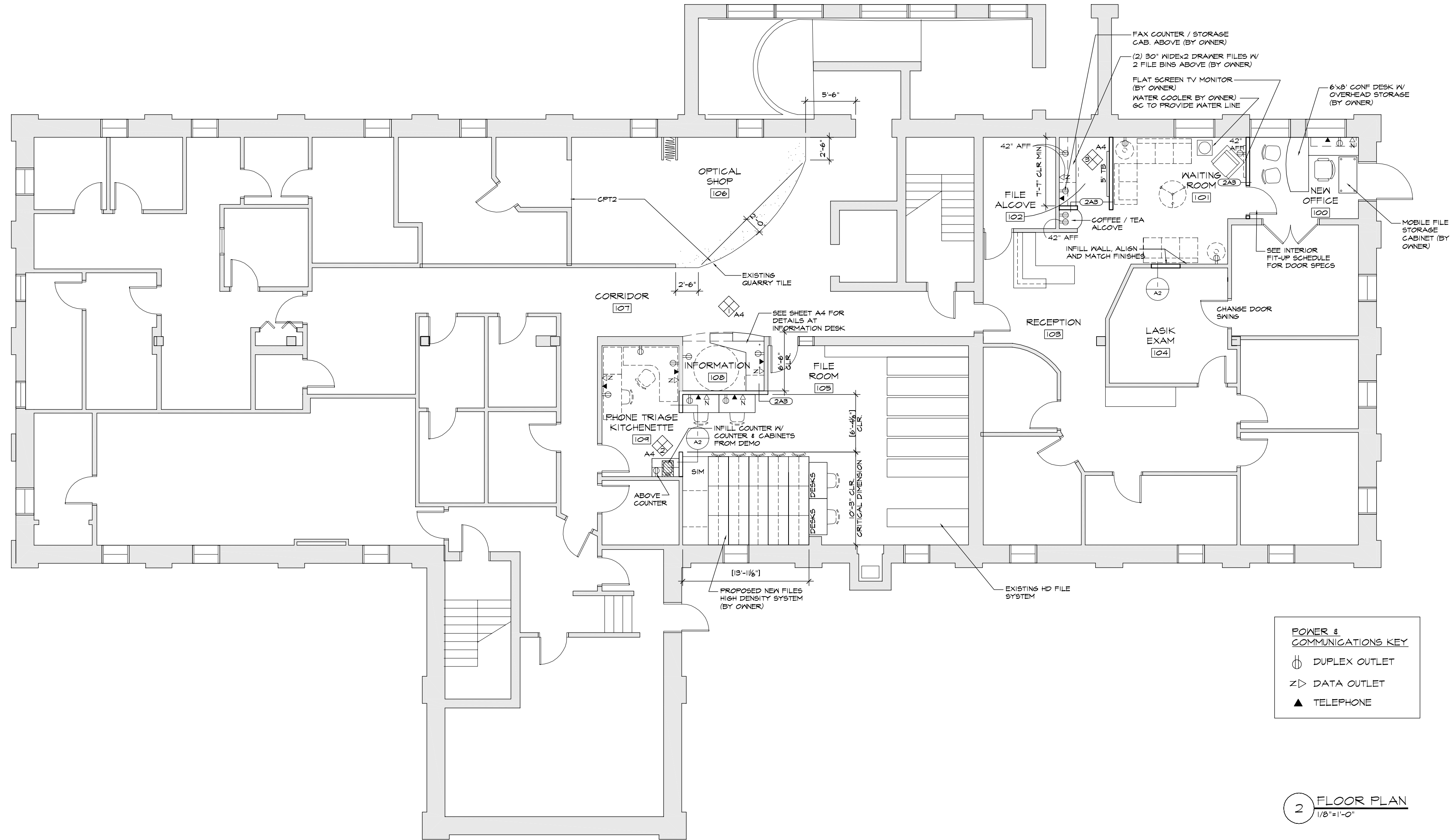


Jun 27, 2008 - 11:26am

H:\Master Proj Files\2\Maine Eye Center - 1st Floor - 2008\MEC-PLAN.dwg



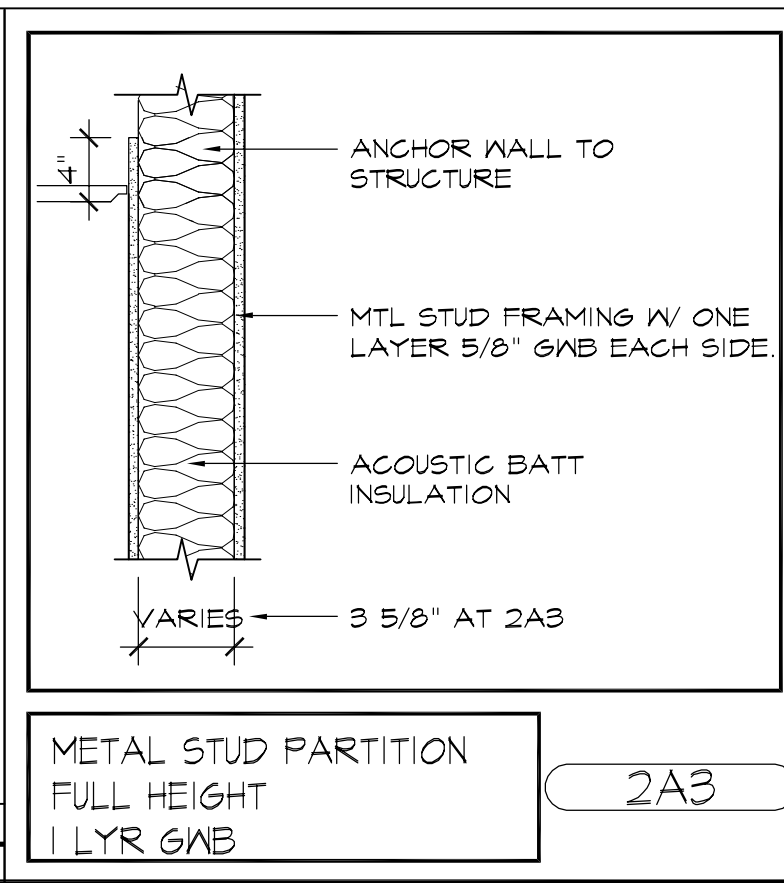
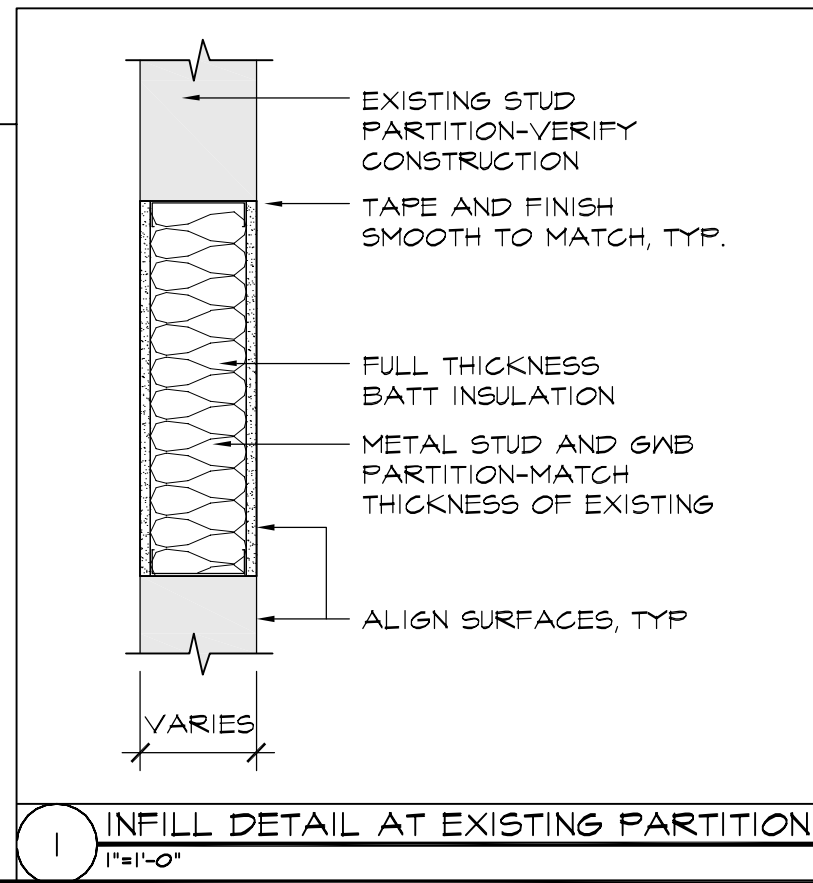
2 FLOOR PLAN
1/8"=1'-0"

GENERAL PLAN NOTES

1. THE DRAWINGS USE A SYSTEM OF KEYED NOTES ON PLANS, ELEVATIONS AND DETAILS. INSTRUCTIONS FOR SPECIFIC COMPONENTS OF THE WORK ARE KEYED TO THE DRAWINGS. BUILDING SYSTEMS (PARTITIONS) ARE KEYED TO FLOOR PLANS, WALL SECTIONS AND OTHER DETAILS AS APPROPRIATE.
2. WORK FROM GIVEN DIMENSIONS: IN GENERAL, LARGE-SCALE DETAILS TAKE PRECEDENCE OVER SMALLER SCALE PLANS, ELEVATIONS AND SECTIONS. NOTIFY THE ARCHITECT OF ANY DIMENSIONAL DISCREPANCIES PRIOR TO COMMENCING THE WORK, AND DO NOT BEGIN WORK UNTIL SUCH DISCREPANCIES ARE RESOLVED BY THE ARCHITECT. DO NOT SCALE DRAWINGS. DIMENSIONS INDICATED AS "CLEAR" SHALL BE MAINTAINED IN CASES OF DISCREPANCY.
3. DIMENSIONAL CONTROL:
INTERIOR DIMENSIONS ARE FROM:
 - FACE OF STUD TO FACE OF STUD
 - FACE OF EXISTING WALL TO FACE OF STUD
 - EXISTING DIMENSIONS ARE SHOWN ENCLOSED IN SQUARE BRACKETS [] AND SHALL BE VERIFIED.
5. FLOORING AND FLOOR FINISHES SHALL BE INSTALLED TO A MAXIMUM DIFFERENTIAL OF 1/16" BETWEEN DISSIMILAR MATERIALS. PROVIDE TRANSITION STRIPS OR THRESHOLDS (1/2" MAXIMUM) OF SAME MATERIAL AS FLOORING AND/OR AS NOTED ON THE DRAWINGS.

WALL GENERAL NOTES

1. ALL PARTITIONS SHALL EXTEND FROM SUB-FLOOR OR SLAB TO 4" ABOVE ADJACENT FINISHED CEILING. BRACE PARTITION AS REQ'D.
2. INSTALL ONE BEAD OF ACOUSTICAL SEALANT UNDER EACH LAYER OF GWB AT INTERSECTION WITH FLOOR AT EACH SIDE OF WALL. COVER WITH WALL BASE.
3. INSTALL BLOCKING BEHIND ALL SURFACE-APPLIED FIXTURES, TRIM, SHELVES, CHAIR RAILS, PICTURE RAILS, BASE MOLDINGS, TACK OR MARKER BOARDS, WINDOW TREATMENT, WALL OR BASE CABINETS OR COUNTERS, AND MISCELLANEOUS ACCESSORIES MOUNTED ON STUD WALLS.
4. ALL INTERIOR MTL STUD PARTITIONS ARE TYPE 2A4, UNO.
5. NEW EQUIPMENT MOUNTED ON EXISTING WALLS: VERIFY WALL TYPE PRIOR TO THE WORK TO DETERMINE APP. TYPE OF ANCHOR UNO. CONSULT ARCHITECT FOR CLARIFICATION IF NEEDED.



COPYRIGHT 2008
PDT Architects
Reuse or reproduction of the contents of this document is not permitted without written permission of PDT Architects.

Maine Eye Center
Lasik/Lobby Renovations
PORTLAND, MAINE

JOB NO.
08-046

DRWN. CHK
AJR

SCALE:
AS NOTED

ISSUE
09 JUNE 2008

TITLE
FLOOR PLAN
WALL TYPES
AND NOTES

SHEET
A2