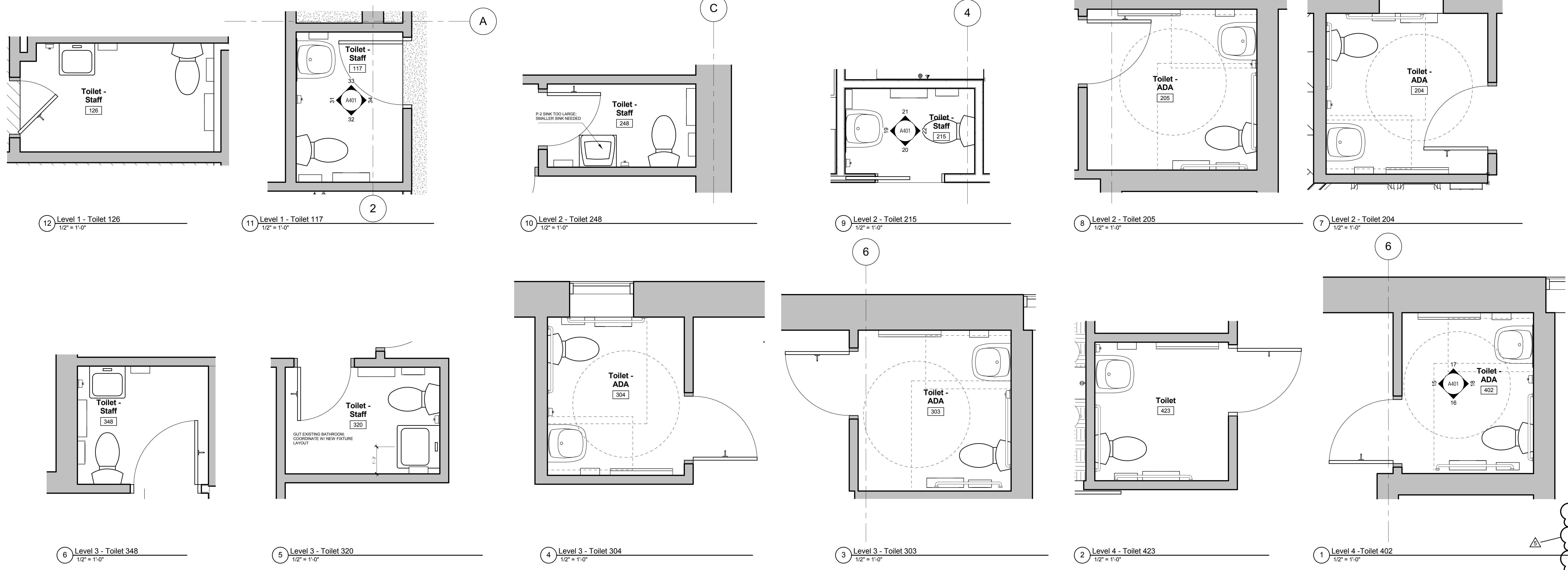
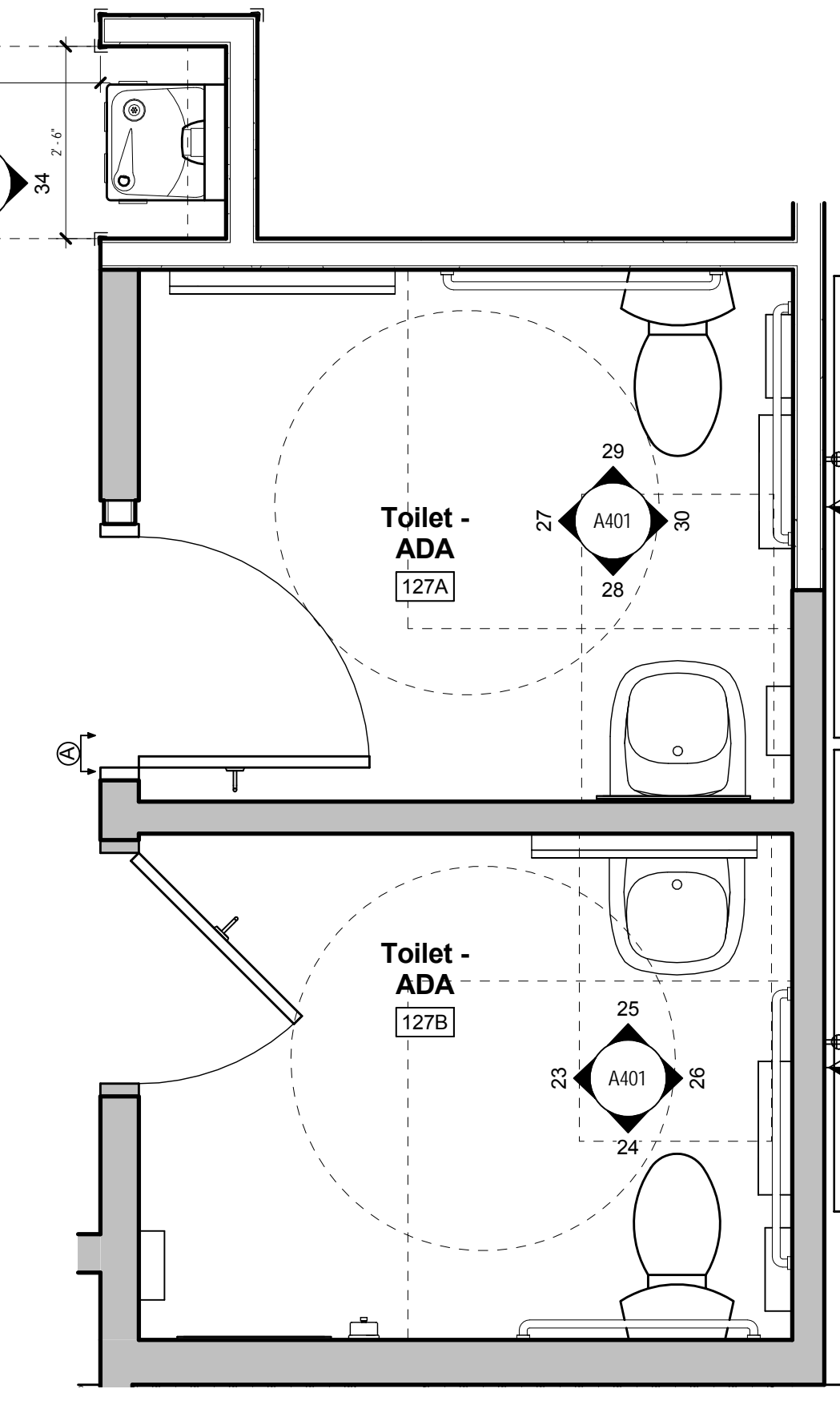
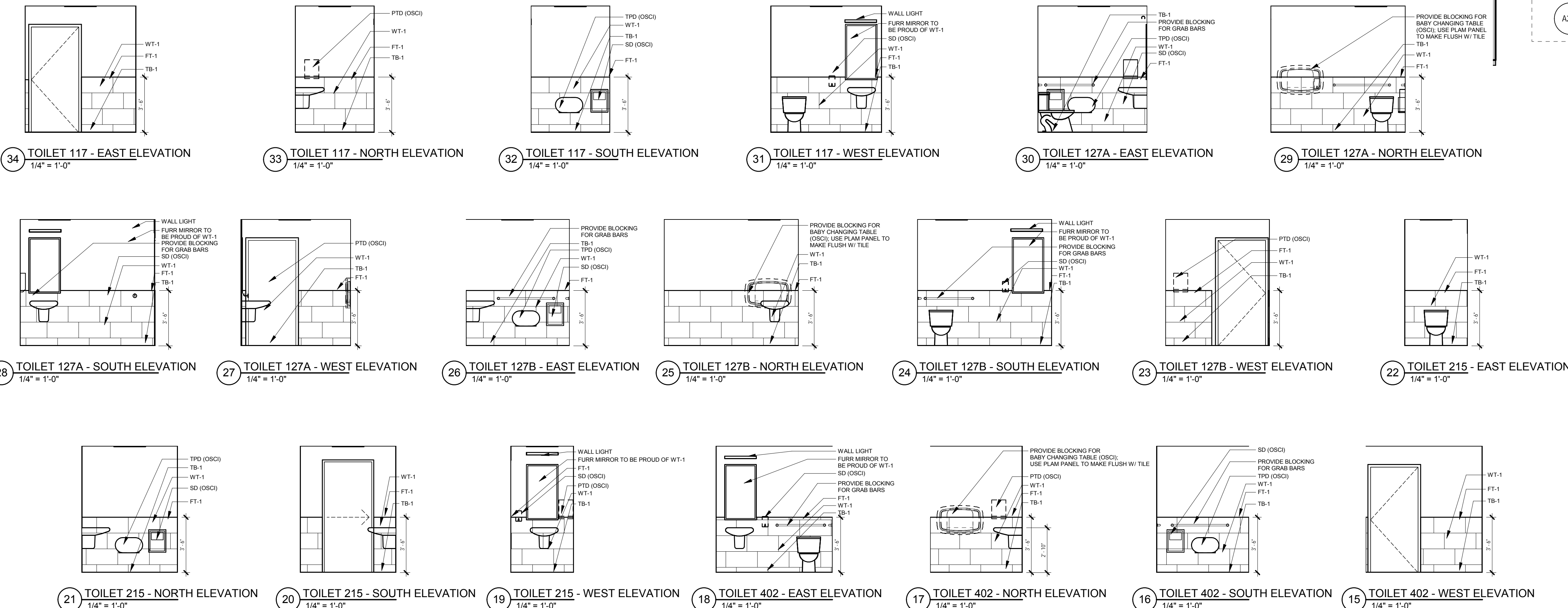
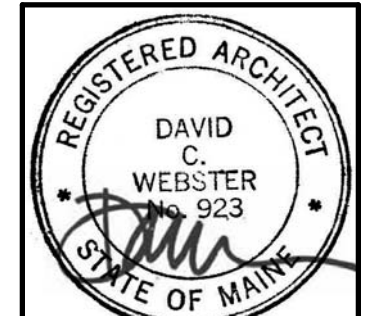


Toilet Room Fixtures & Accessories											
Name	Number	Toilet	Sink	Soap Dispenser (SD)	Paper Towel Dispenser (PTD)	Toilet Paper Dispenser (TPD)	Baby Changing Table	Grab Bars	Mirror	Sanitary Disposal (SD)	Fan
Toilet - Staff	117	New	New	New	New	New	No	No	New	New	New
Toilet - ADA	127A	Reuse	Reuse	Reuse	Reuse	Reuse	No	No	New	Reuse	Reuse
Toilet - ADA	127B	New	New	New	New	New	Yes	Yes	New	New	New
Toilet - ADA	204	New	New	Reuse	Reuse	Reuse	New	Yes	New	Reuse	New
Toilet - ADA	205	New	Reuse	Reuse	Reuse	Reuse	New	Yes	New	N/A	Reuse
Toilet - Staff	215	New	New	New	New	New	No	No	New	New	New
Toilet - Staff	248	Reuse	New	Reuse	Reuse	Reuse	No	No	New	Reuse	New
Toilet - ADA	303	New	Reuse	Reuse	Reuse	Reuse	New	Yes	New	N/A	New
Toilet - ADA	304	New	New	Reuse	Reuse	Reuse	New	Yes	New	Reuse	Reuse
Toilet - Staff	320	Reuse	New	Reuse	Reuse	Reuse	No	No	New	Reuse	New
Toilet - Staff	348	New	New	Reuse	Reuse	Reuse	No	No	New	Reuse	New
Toilet - ADA	402	New	New	New	New	New	New	Yes	New	New	New
Toilet	420	N/A	N/A	N/A	N/A	N/A	N/A	N/A	N/A	N/A	N/A
Toilet	423	Reuse	Reuse	Reuse	Reuse	Reuse	New	Yes	New	Reuse	Reuse

- TOILET ROOM NOTES**
- All mounting heights and clearances at Toilet rooms and elsewhere shall comply with the latest version of the ADA Accessibility Guidelines (ADAAG).
  - Barrier-Free clearances are given. These **clear** dimensions shall be maintained in cases of discrepancy.
  - All dimensions given for fixture and accessory locations are **clear** dimensions from finished surfaces, unless noted otherwise. Coordinate actual dimensions with wall construction and finishes.
  - Locate all controls, flush valves, shutoffs and similar items in accordance with the latest version of the ADA Accessibility Guidelines (ADAAG).
  - A range of mounting heights may be given for some items. Maintain a consistent mounting height, within the given range, throughout the Project, unless noted otherwise.
  - Install blocking behind all surface-applied fixtures, trim, grab bars, shelves, chair rails, picture rails, base moldings, tack or marker boards, window treatment, wall or base cabinets or counters, and miscellaneous accessories mounted on stud walls.
  - Fill CMU solid with grout at all surface-applied fixtures, trim, grab bars, shelves, chair rails, picture rails, base moldings, tack or marker boards, window treatment, wall or base cabinets or counters, and miscellaneous accessories mounted on CMU walls.
  - Install coat hooks at doors and walls.
  - Install transition strips between dissimilar flooring materials.
  - All wood not indicated to be painted shall be natural finish (clear).
  - All grab bar components shall be able to withstand a horizontal load of 250lbs at any point.
  - Reuse existing grab bars where possible.
  - All grab bars should be removed and blocking made integral.
  - Fixtures to remain in original location unless gut renovation.
  - Toilet must be 18" from wall in all ADA toilet rooms.
  - Miter all Schluter trim at corner conditions.



#	Date	Description
5	9/12/17	Toilet Rooms



JOB NO.  
16064

DRWN: CHK  
Author Checker

SCALE:

ISSUE:  
Pricing Set

November 21, 2017

TITLE:  
Plan Enlargements -  
Toilet Rooms

SHEET  
**A401**