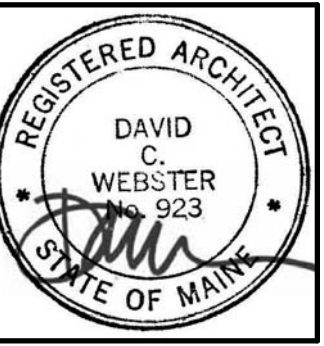


#	Date	Description
Revision Schedule		



JOB NO.
16064

DRWN: CHK
SMD RSC

SCALE:

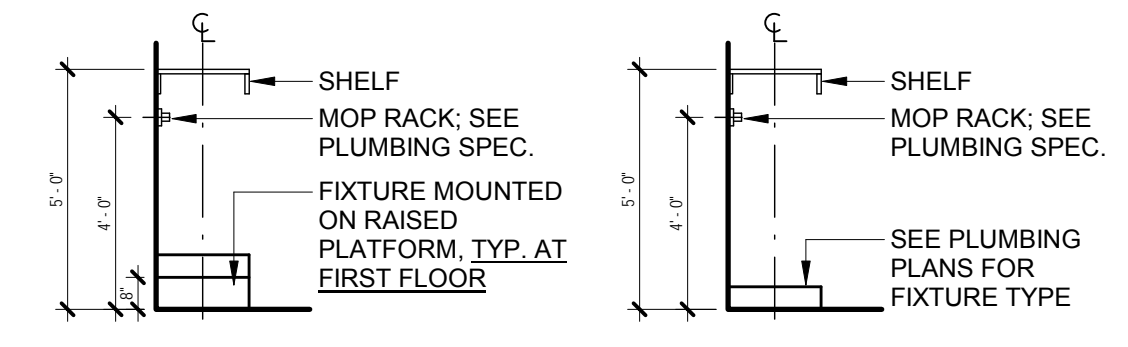
ISSUE:
Permit Set

September 7, 2017

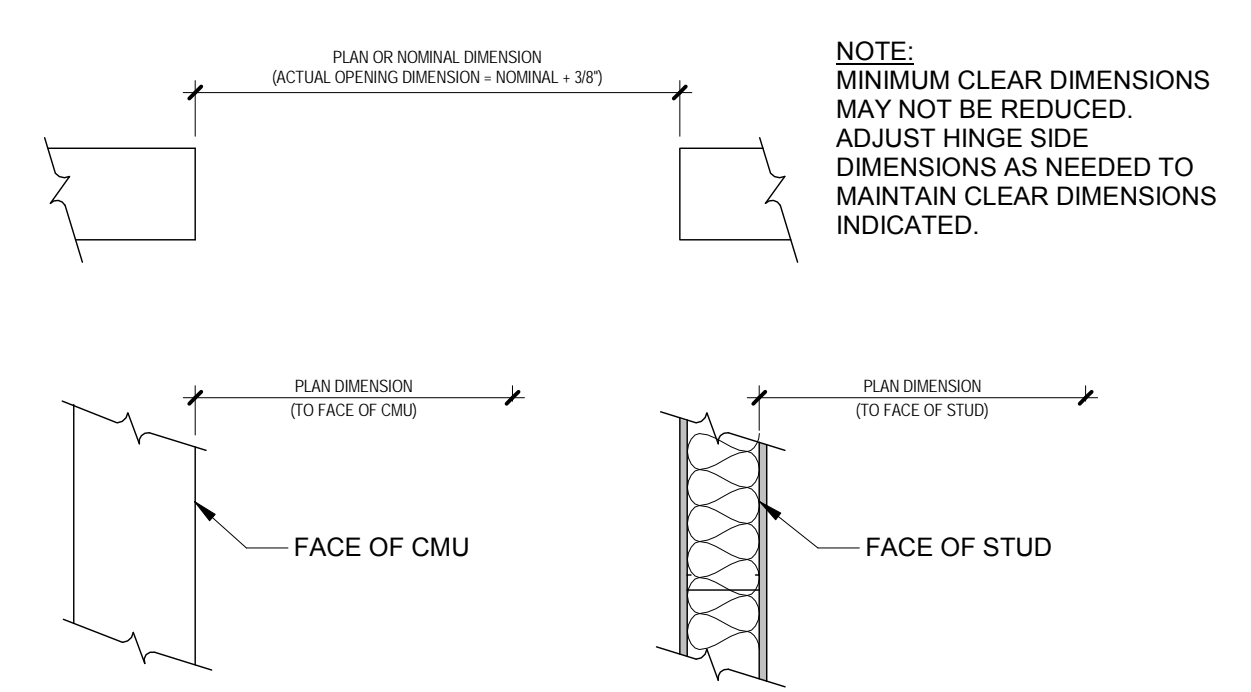
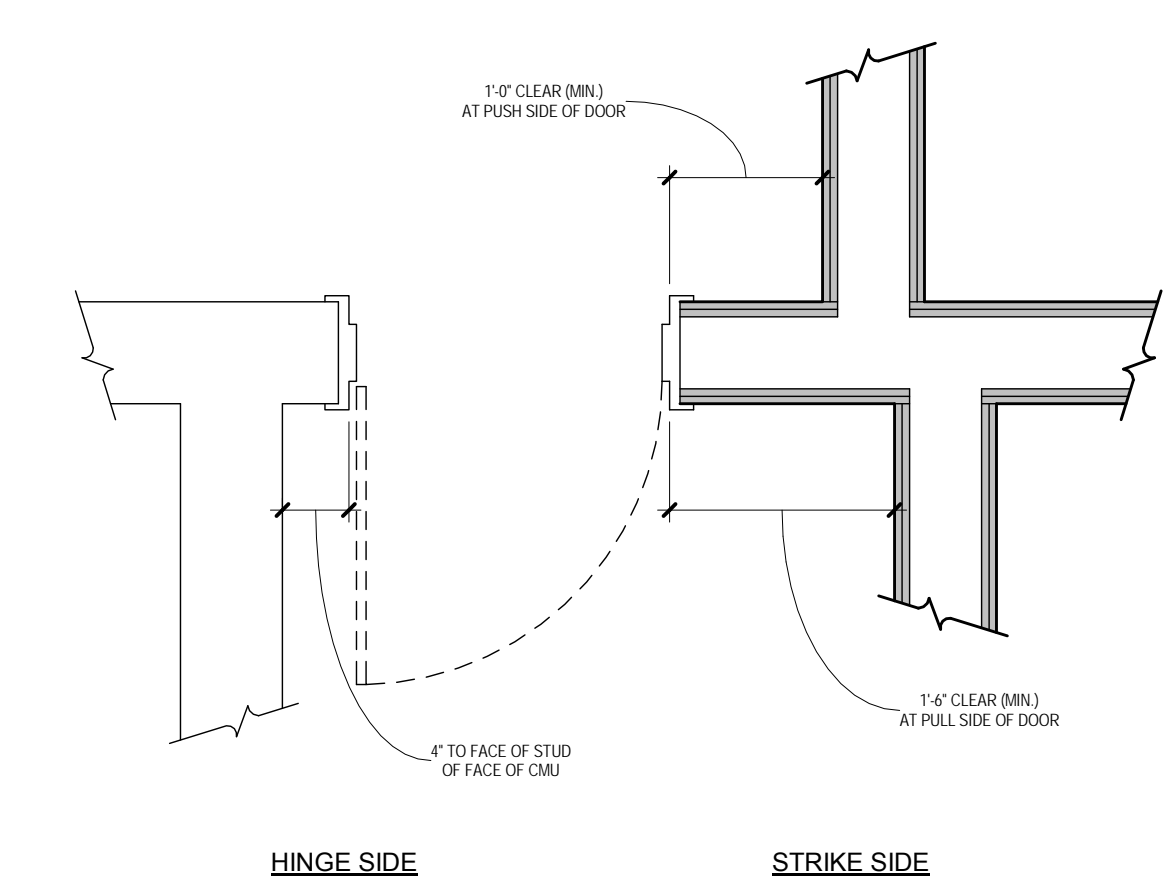
TITLE:
Typical Mounting
Heights

SHEET

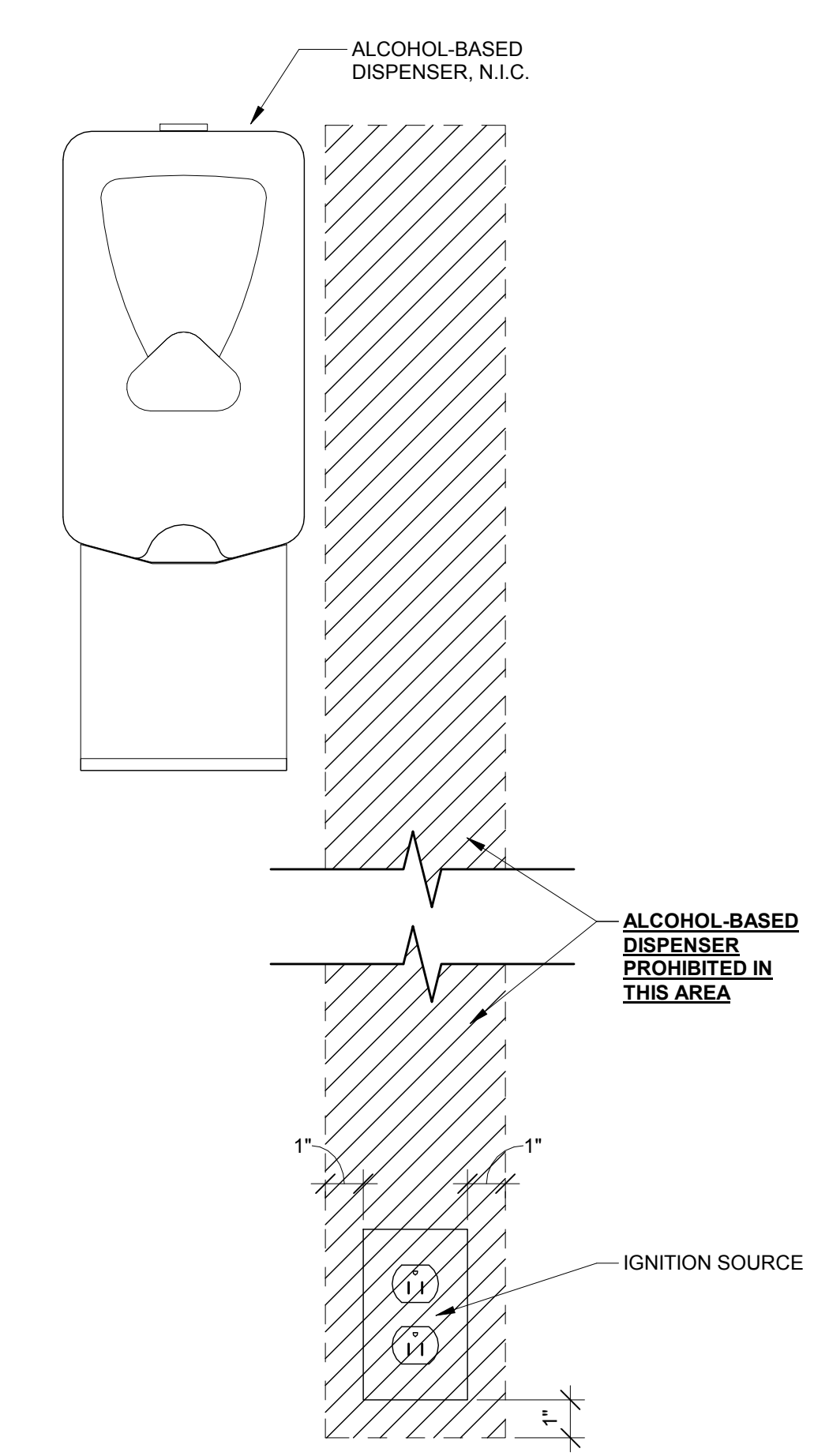
A002



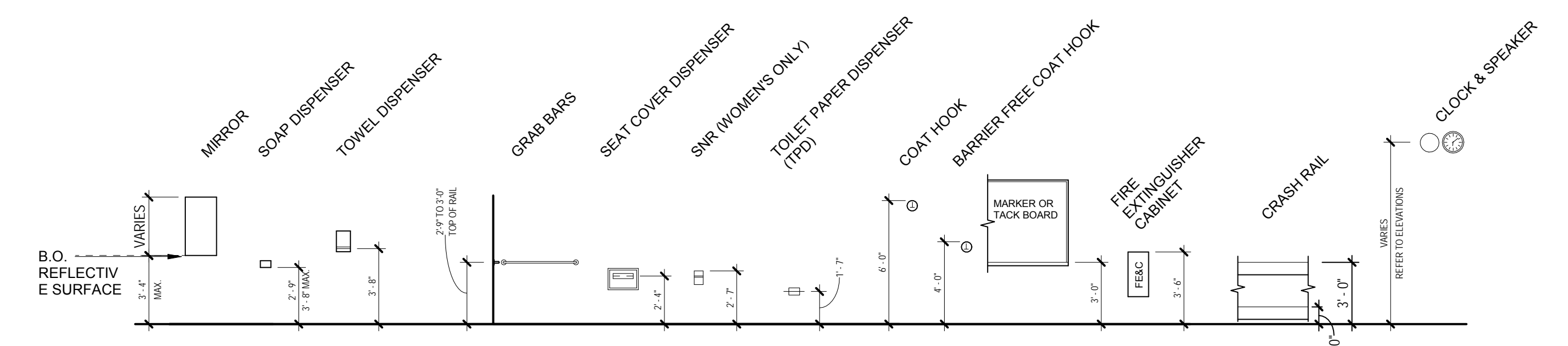
B2 JANITOR'S CLOSET ASSEMBLY
ELEVATIONS
1/4" = 1'-0"



1 DIMENSIONAL STANDARDS
1/16" = 1'-0"



A3 HAND-RUB DISPENSER LOCATION
DIAGRAM
3\"/>



A1 TYPICAL MOUNTING HEIGHTS1
3/16" = 1'-0"

- MOUNTING HEIGHT GENERAL NOTES:**
- SEE MECHANICAL, ELECTRICAL, AND TECHNOLOGY DRAWINGS FOR SPECIFIC FIXTURE OR DEVICE LOCATION AND DESIGNATION AND ADDITIONAL MOUNTING REQUIREMENTS.
 - COORDINATE LOCATION OF ALL RECEPTACLES, FIXTURES OR DEVICES WITH INTERIOR ELEVATIONS AND CASEWORK LOCATIONS.
 - REFER TO MANUFACTURER'S INSTRUCTIONS FOR SPECIFIC ADA REQUIRED MOUNTING HEIGHTS AS APPLICABLE.