



HARRIMAN

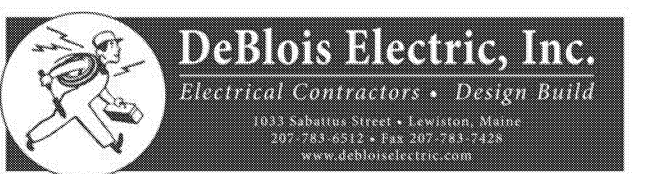
AUBURN PORTLAND PORTSMOUTH BOSTON

LOWELL STREET RENOVATIONS

PORTLAND, MAINE

Harriman Project No. 16712

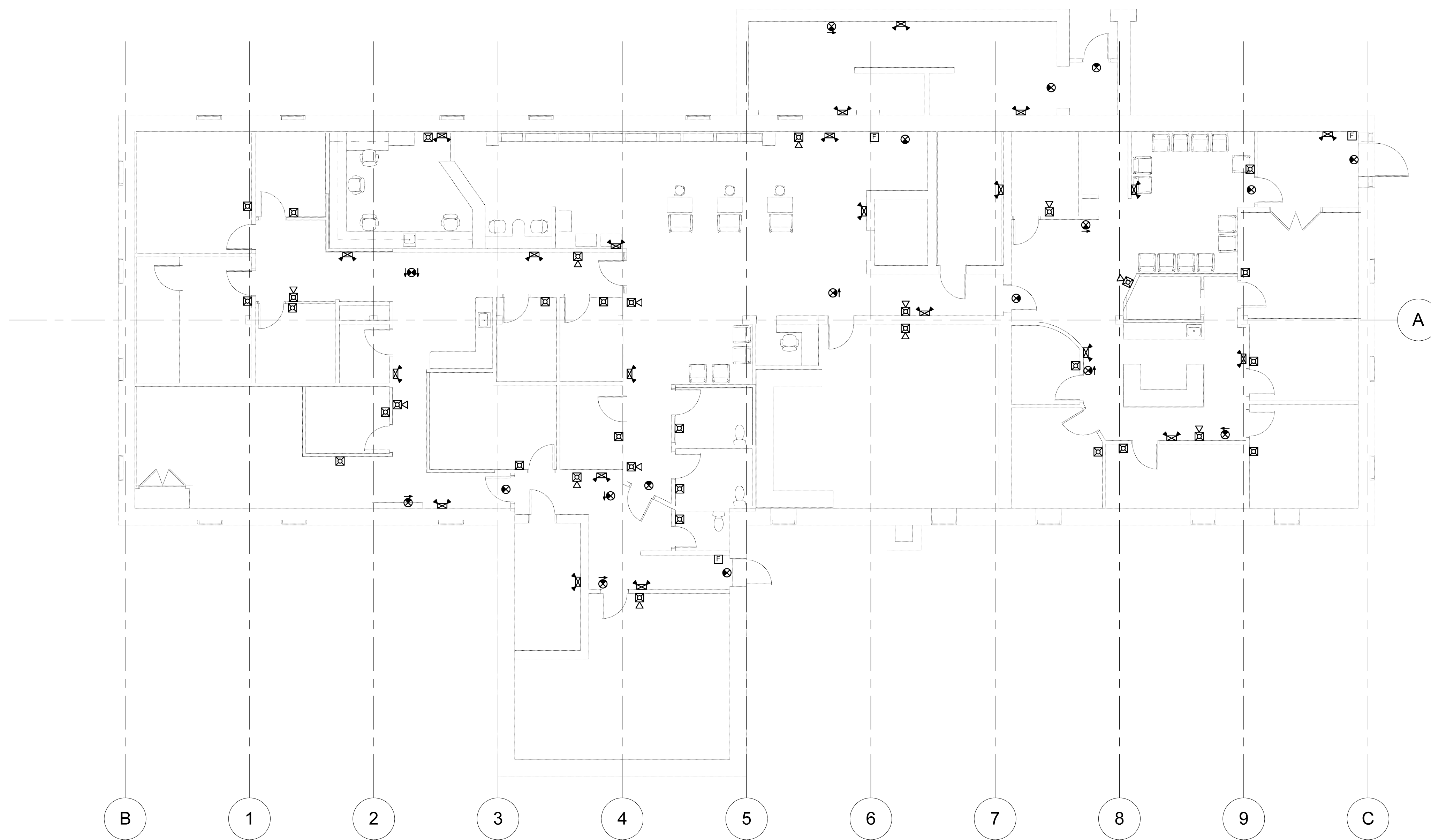
Key Plan Pro North



LIFE SAFETY SYSTEM SYMBOL LEGEND

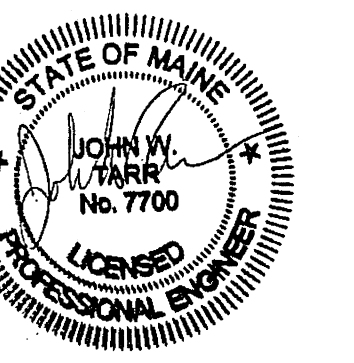
HT AFF	SYMBOL	DESCRIPTION
90°		EMERGENCY BATTERY LIGHT
		EMERGENCY BATTERY REMOTE HEADS
		WALL MOUNTED EXIT SIGN WITH ARROWS AS INDICATED/HATCH INDICATES FACE - MOUNT DIRECTLY ABOVE DOOR
		CEILING MOUNTED EXIT SIGN WITH ARROWS AS INDICATED/HATCH INDICATES FACE
80°		WALL MOUNTED FIRE ALARM STROBE LIGHT
80°		WALL MOUNTED FIRE ALARM HORN / STROBE LIGHT
48°		FIRE ALARM MANUAL PULL STATION

ALL DISTANCES ARE TO CENTER OF DEVICE OR EQUIPMENT UNLESS OTHERWISE NOTED. DEVICES INDICATED AT 48° MAY NOT BE INSTALLED WITH ANY OPERABLE PART HIGHER THAN 48°. DEVICES MAY BE INSTALLED IN CONCRETE MASONRY UNITS WITH THE TOP OF THE DEVICE AT 48°.



1 FIRST FLOOR LIFE SAFETY PLAN
SCALE: 1/8" = 1'-0"

Issues and Revisions	
Date	Description
08-28-17	FIRE MARSHAL REVIEW



PA / PE: JWT
Drawn By: DSH

© 2017
Harriman Associates

FIRST FLOOR LIFE SAFETY PLAN

E10.1LS