

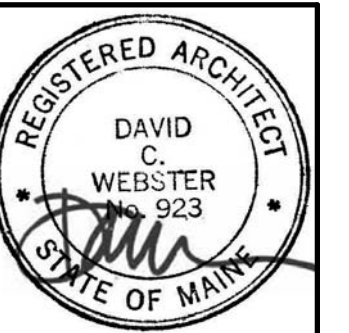


**PDT ARCHITECTS**  
 49 DARTMOUTH STREET  
 PORTLAND, MAINE  
 04101  
 207-775-1059  
 www.pdtarch.com

**COPYRIGHT**  
 PDT Architects  
 Reuse or reproduction of the  
 contents of this document is not  
 permitted without written  
 permission of PDT Architects.

**Lowell Street 3rd & 4th Floor Renovations**  
 15 Lowell Street, Portland, Maine 04101

#	Date	Description
Revision Schedule		



JOB NO.  
16064

DRWN: CHK  
SMD RSC

SCALE:

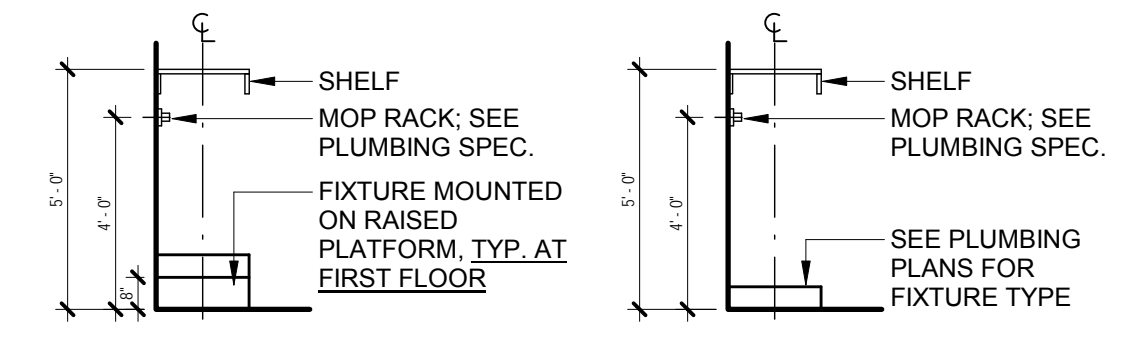
ISSUE:  
Permit Set

June 16, 2017

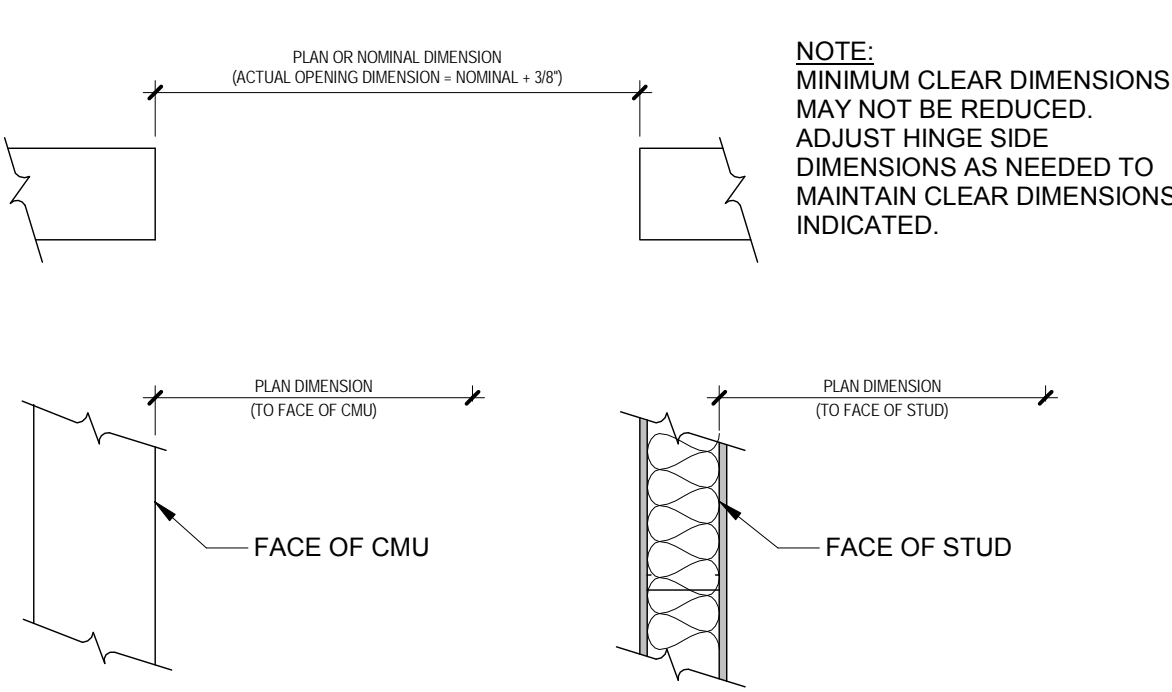
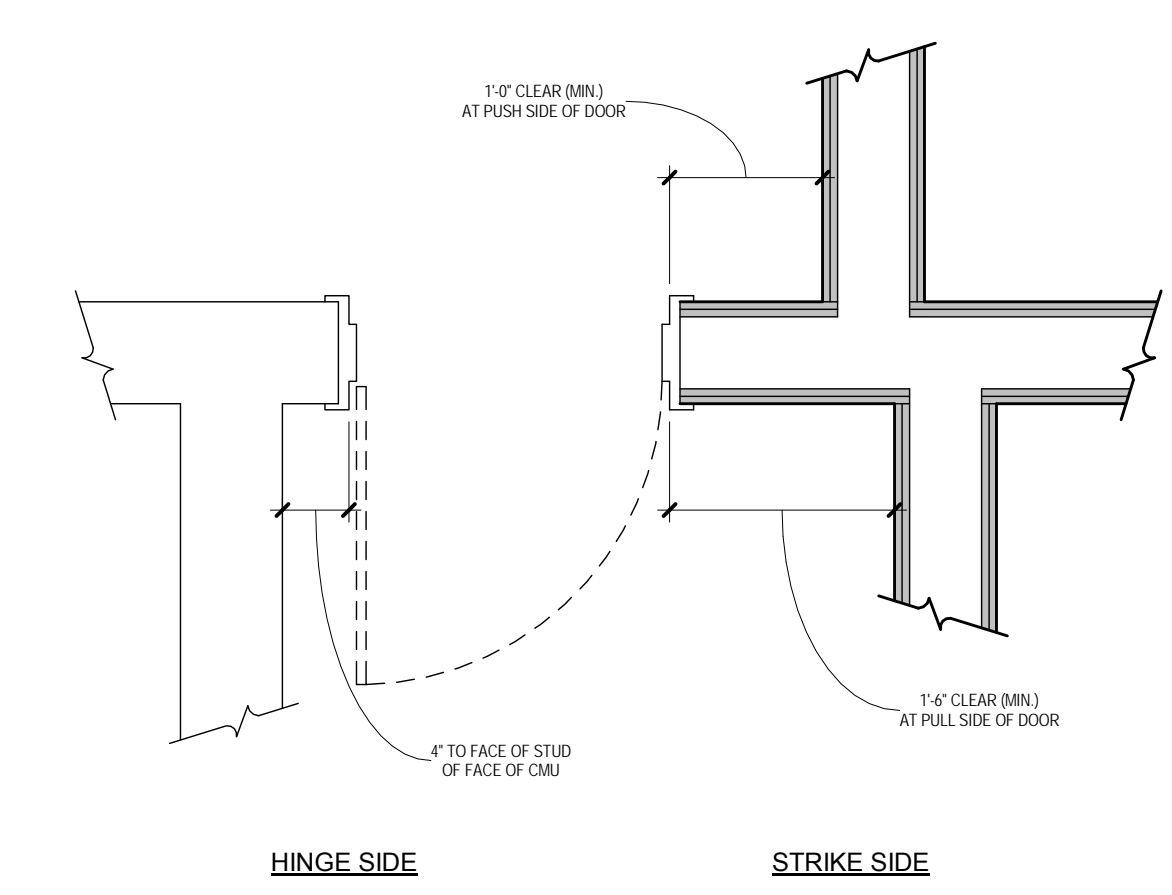
TITLE:  
Typical Mounting  
Heights

SHEET

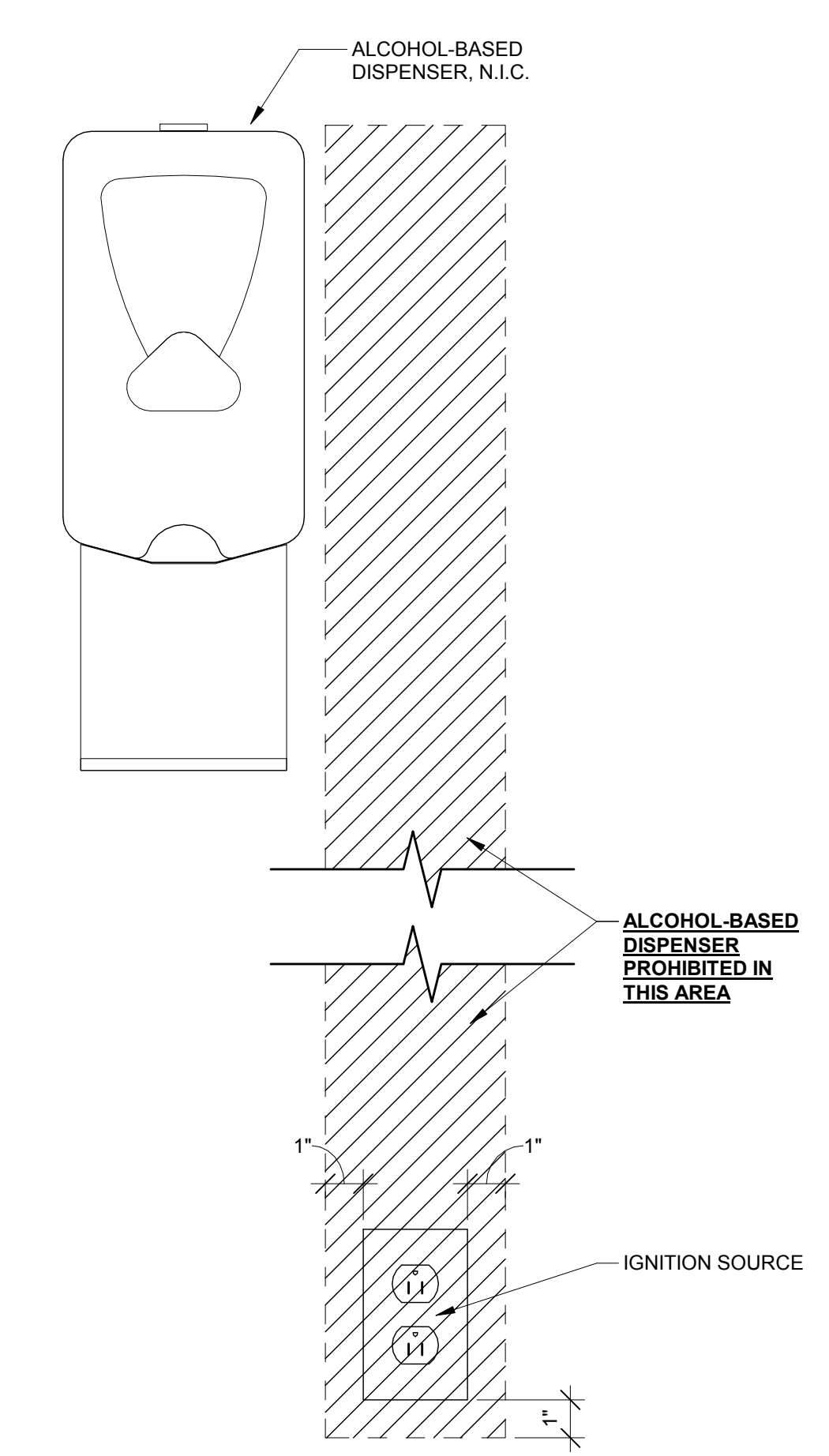
**A002**



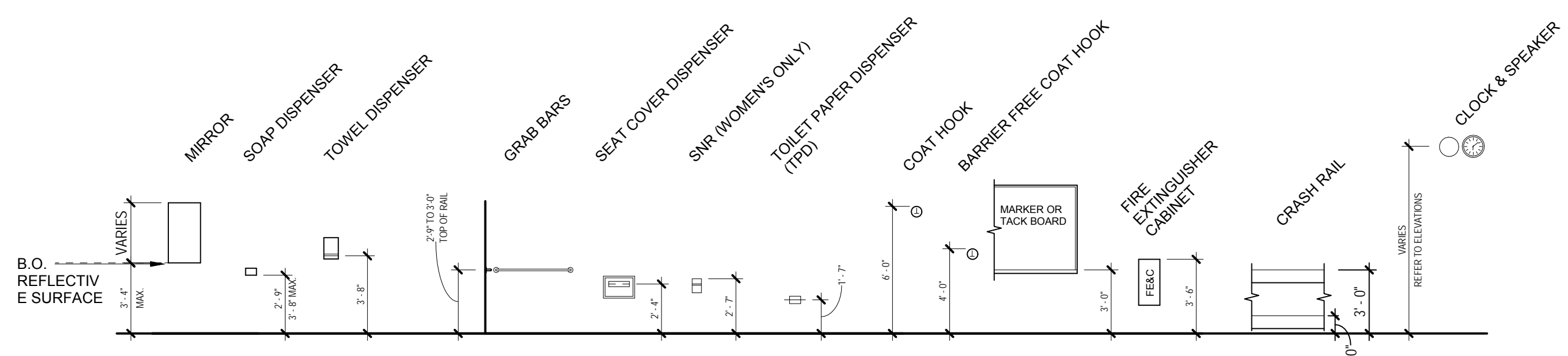
**B2** JANITOR'S CLOSET ASSEMBLY  
 1/4" = 1'-0"



**1** DIMENSIONAL STANDARDS  
 1/2" = 1'-0"



**A3** HAND-RUB DISPENSER LOCATION  
 3" = 1'-0"



**A1** TYPICAL MOUNTING HEIGHTS1  
 3/16" = 1'-0"

- MOUNTING HEIGHT GENERAL NOTES:**
- SEE MECHANICAL, ELECTRICAL, AND TECHNOLOGY DRAWINGS FOR SPECIFIC FIXTURE OR DEVICE LOCATION AND DESIGNATION AND ADDITIONAL MOUNTING REQUIREMENTS.
  - COORDINATE LOCATION OF ALL RECEPTACLES, FIXTURES OR DEVICES WITH INTERIOR ELEVATIONS AND CASEWORK LOCATIONS.
  - REFER TO MANUFACTURER'S INSTRUCTIONS FOR SPECIFIC ADA REQUIRED MOUNTING HEIGHTS AS APPLICABLE.