

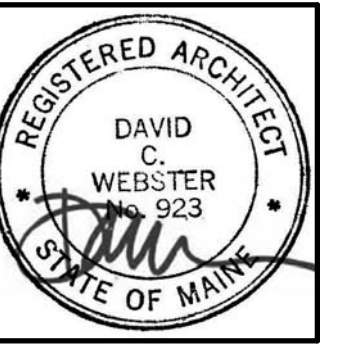


PDT ARCHITECTS
 49 DARTMOUTH STREET
 PORTLAND, MAINE 04101
 207-775-1059
 www.pdtarch.com

COPYRIGHT
 PDT Architects
 Reuse or reproduction of the
 contents of this document is not
 permitted without written
 permission of PDT Architects.

Lowell Street 3rd & 4th Floor Renovations
 15 Lowell Street, Portland, Maine 04101

#	Date	Description
		Revision Schedule



JOB NO.
16064

DRWN: CHK
Author Checker

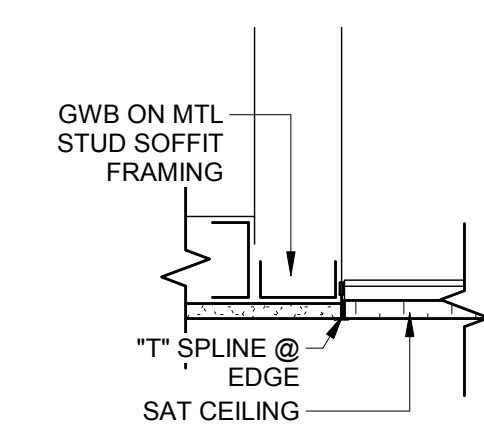
SCALE:

ISSUE:
Permit Set

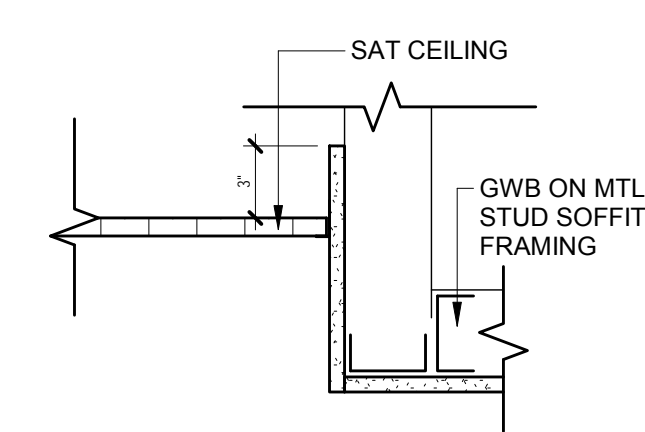
June 16, 2017

TITLE:
Typical Interior
Details

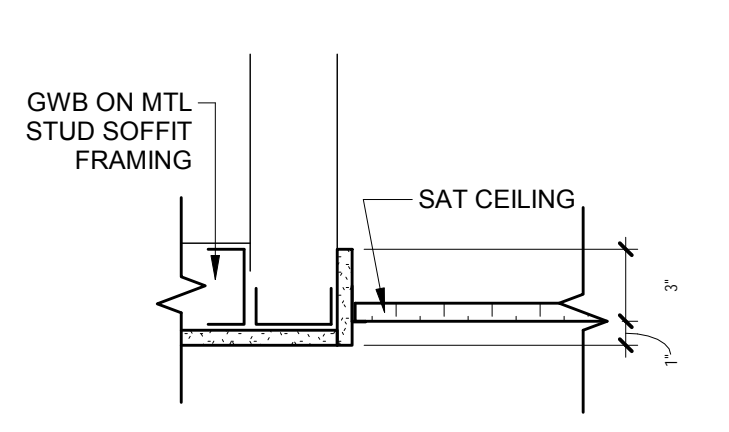
SHEET
A500



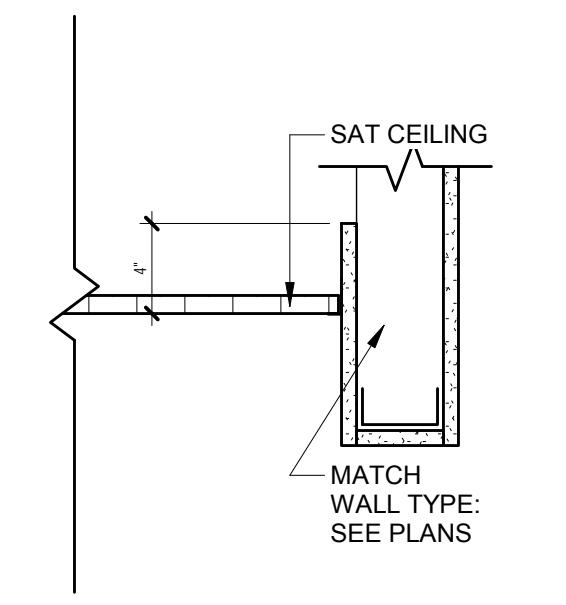
4 CEILING DETAIL - SAT TO GWB ALIGNED
1 1/2" = 1'-0"



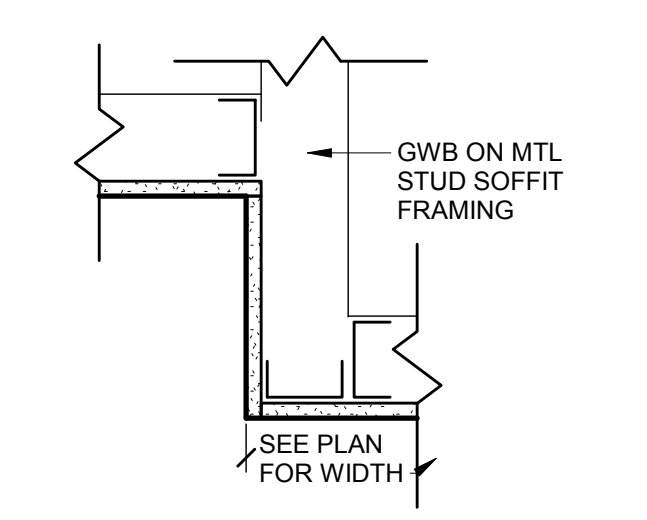
3 CEILING DETAIL - SAT TO GWB
1 1/2" = 1'-0"



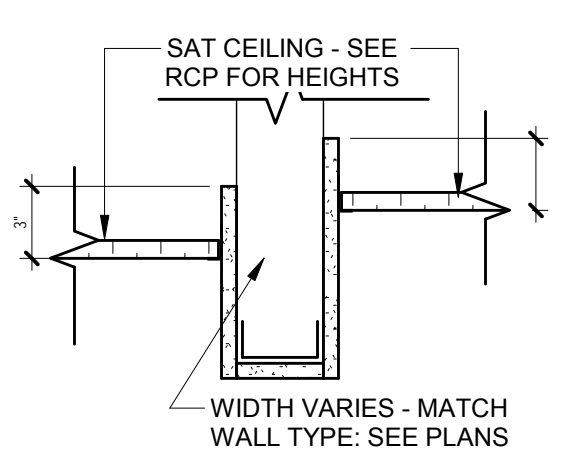
2 CEILING DETAIL - LOW SAT TO GWB
1 1/2" = 1'-0"



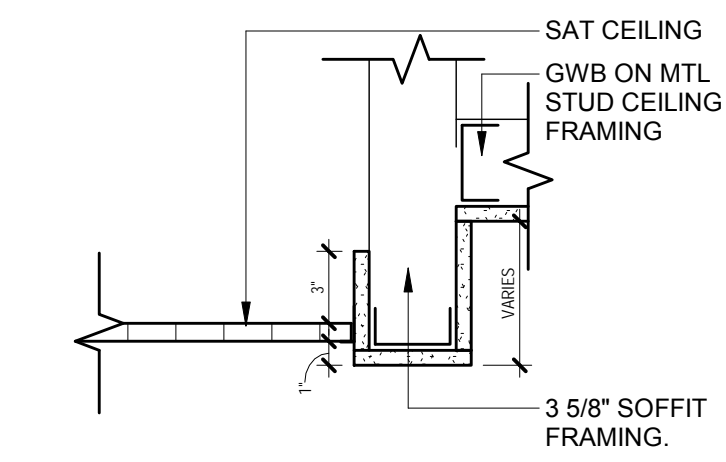
5 CEILING DETAIL - SAT TO GWB SOFFIT
1 1/2" = 1'-0"



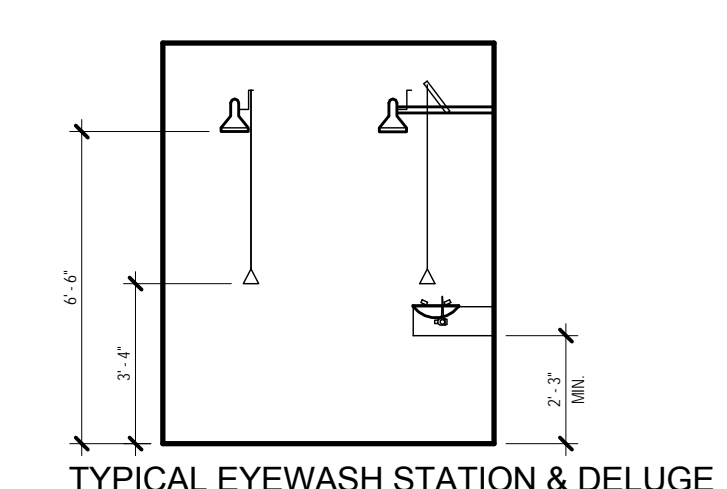
1 CEILING DETAIL - GWB TRANSITION
1 1/2" = 1'-0"



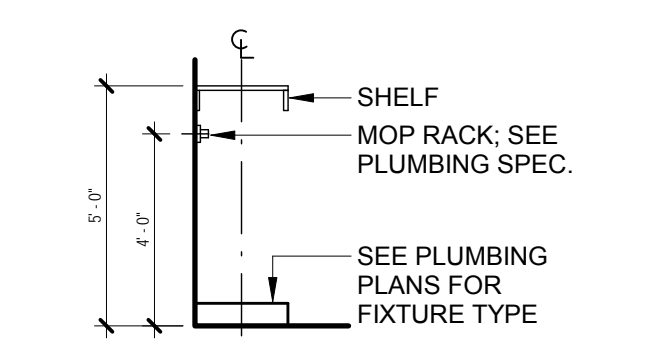
7 CEILING DETAIL - SAT W/ GWB SOFFIT
1 1/2" = 1'-0"



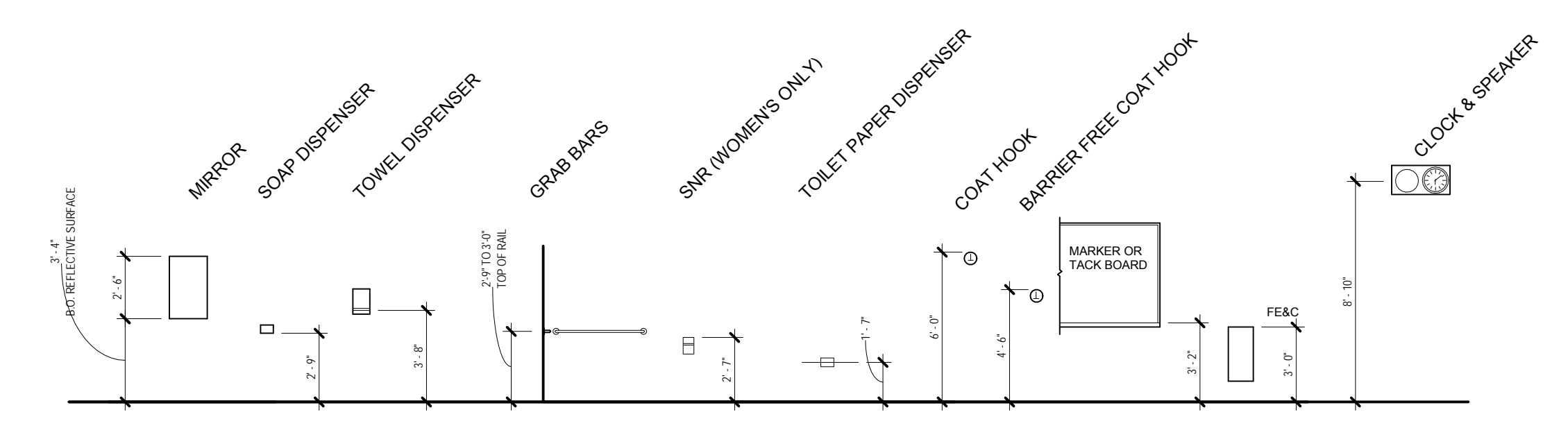
6 CEILING DETAIL - SAT TO GWB W/
SOFFIT
1 1/2" = 1'-0"



13 TYPICAL EYEWASH STATION & DELUGE
SHOWER
1/4" = 1'-0"



14 TYPICAL JANITOR'S CLOSET ASSEMBLY
ELEVATION
1/4" = 1'-0"



8 TYPICAL MOUNTING HEIGHTS
3/16" = 1'-0"

- MOUNTING HEIGHT GENERAL NOTES:**
- SEE MECHANICAL, ELECTRICAL, AND TECHNOLOGY DRAWINGS FOR SPECIFIC FIXTURE OR DEVICE LOCATION AND DESIGNATION AND ADDITIONAL MOUNTING REQUIREMENTS.
 - COORDINATE LOCATION OF ALL RECEPTACLES, FIXTURES OR DEVICES WITH INTERIOR ELEVATIONS AND CASEWORK LOCATIONS.
 - REFER TO MANUFACTURERS' INSTRUCTIONS FOR SPECIFIC ADA REQUIRED MOUNTING HEIGHTS AS APPLICABLE.