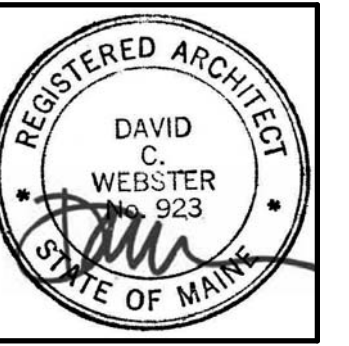


#	Date	Description
Revision Schedule		



JOB NO.
16064

DRWN: CHK
Author Checker

SCALE:

ISSUE:
Permit Set

June 16, 2017

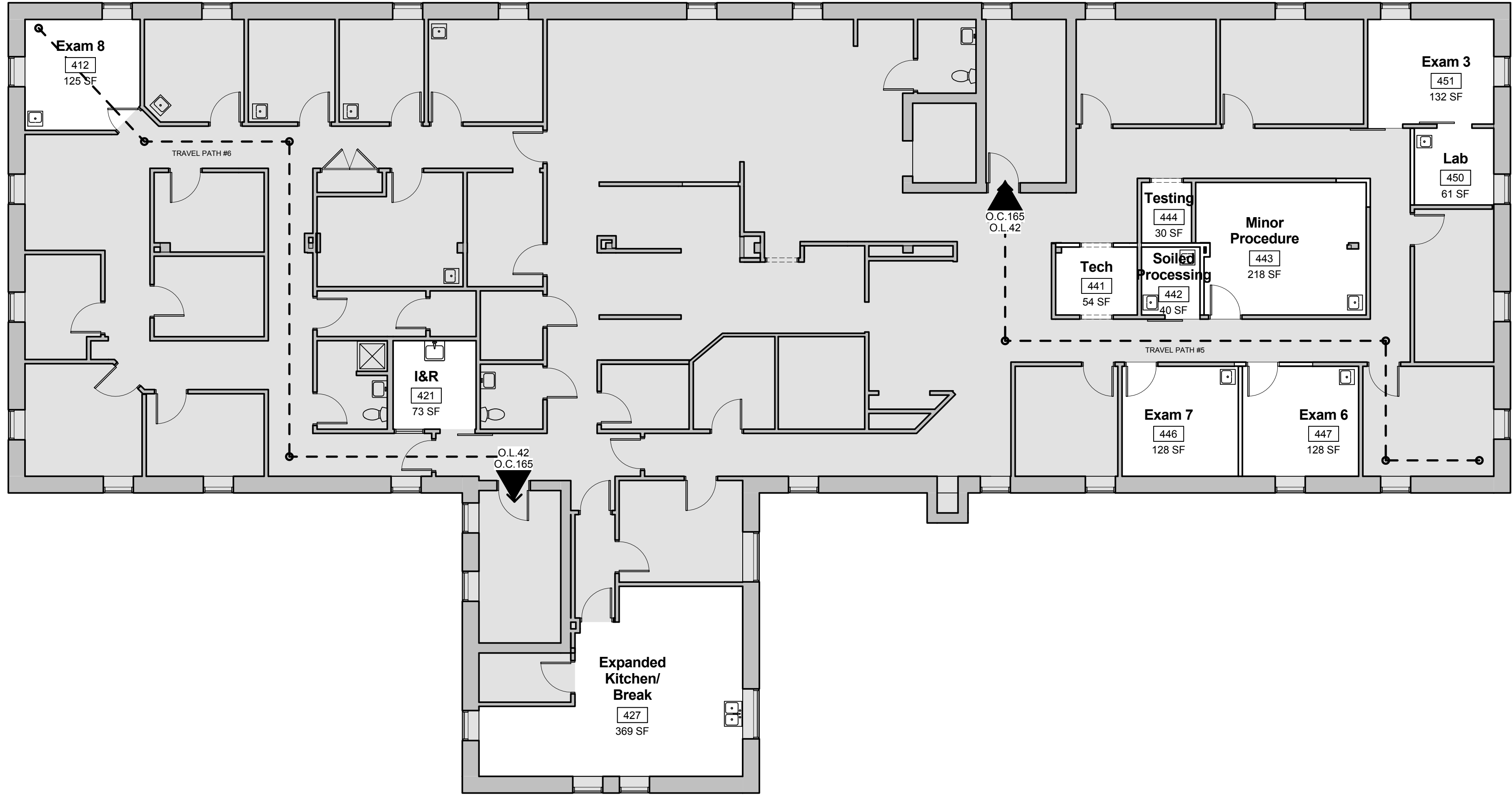
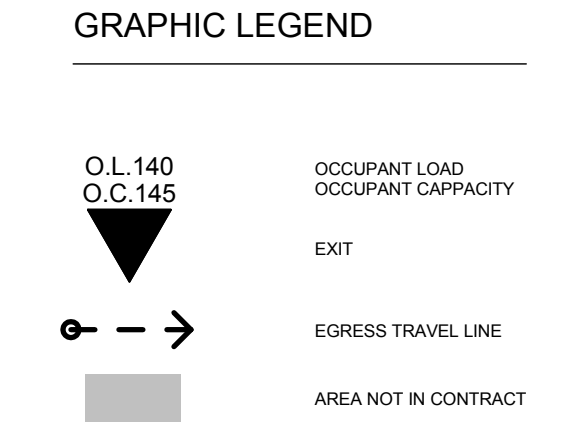
TITLE:
Life Safety Plans &
Code Summary -
Levels 3 & 4

SHEET

A004

Egress-Travel Path Schedule

Travel Path ID	Travel Distance
0"	
Travel path #3	92' - 2 1/16"
Travel path #4	74' - 4 3/4"
Travel path #5	75' - 1 7/8"
Travel path #6	88' - 6"
Travel path #7	71' - 2 1/8"
Travel path #8	101' - 11 25/32"



Summary
 The building consists of an existing single occupant 4 story heavy timber and mass masonry structure served by 2 stairs and an elevator.

The project consists of the renovation of 1,360 sf of 4th floor business use space to reconfigure rooms, and the renovation of 645 sf of 3rd floor business use space to reconfigure rooms.

IBC 2009

OCCUPANCY CLASSIFICATION GROUPS:
 Business per 304.1

CONSTRUCTION TYPE:
 Type III

FIRE PROTECTION SYSTEMS:
 Existing Sprinkler System with melt away ceiling tiles.

OCCUPANT LOAD:
 Occupant Load of B Occupancy:
 Level 1 - 8,858 GSF/100 = 89 Occupants
 Level 2 - 8,262 GSF/100 = 83 Occupants
 Level 3 - 8,262 GSF/100 = 83 Occupants
 Level 4 - 8,262 GSF/100 = 83 Occupants

MEANS OF EGRESS:
 Egress width: Corridors/doors @ 0.2"/person (min. 44" in Business occupancy)
 Door width: Min. clear 32" Max leaf 48"
 Common path of travel: Business IBC 1014.3 - Shall not exceed 100'
 Number of exits: Two exits or exit access from any space with greater than 50 person occupancy or where common path of travel distance is exceeded.

Distance to an exit: Business 200 ft (without sprinkler)
 Dead end: Business 20 ft

NFPA 101 2009
 Partial renovation of an existing building with B Occupancy.

OCCUPANCY CLASSIFICATION GROUPS:
 Business per 3.3.178.3

CONSTRUCTION TYPE:
 Existing Construction - Type IV-2HH

FIRE PROTECTION SYSTEMS:
 Existing Sprinkler System.

OCCUPANT LOAD:
 Level 1 - 8,858 GSF/100 = 89 Occupants
 Level 2 - 8,262 GSF/100 = 83 Occupants
 Level 3 - 8,262 GSF/100 = 83 Occupants
 Level 4 - 8,262 GSF/100 = 83 Occupants

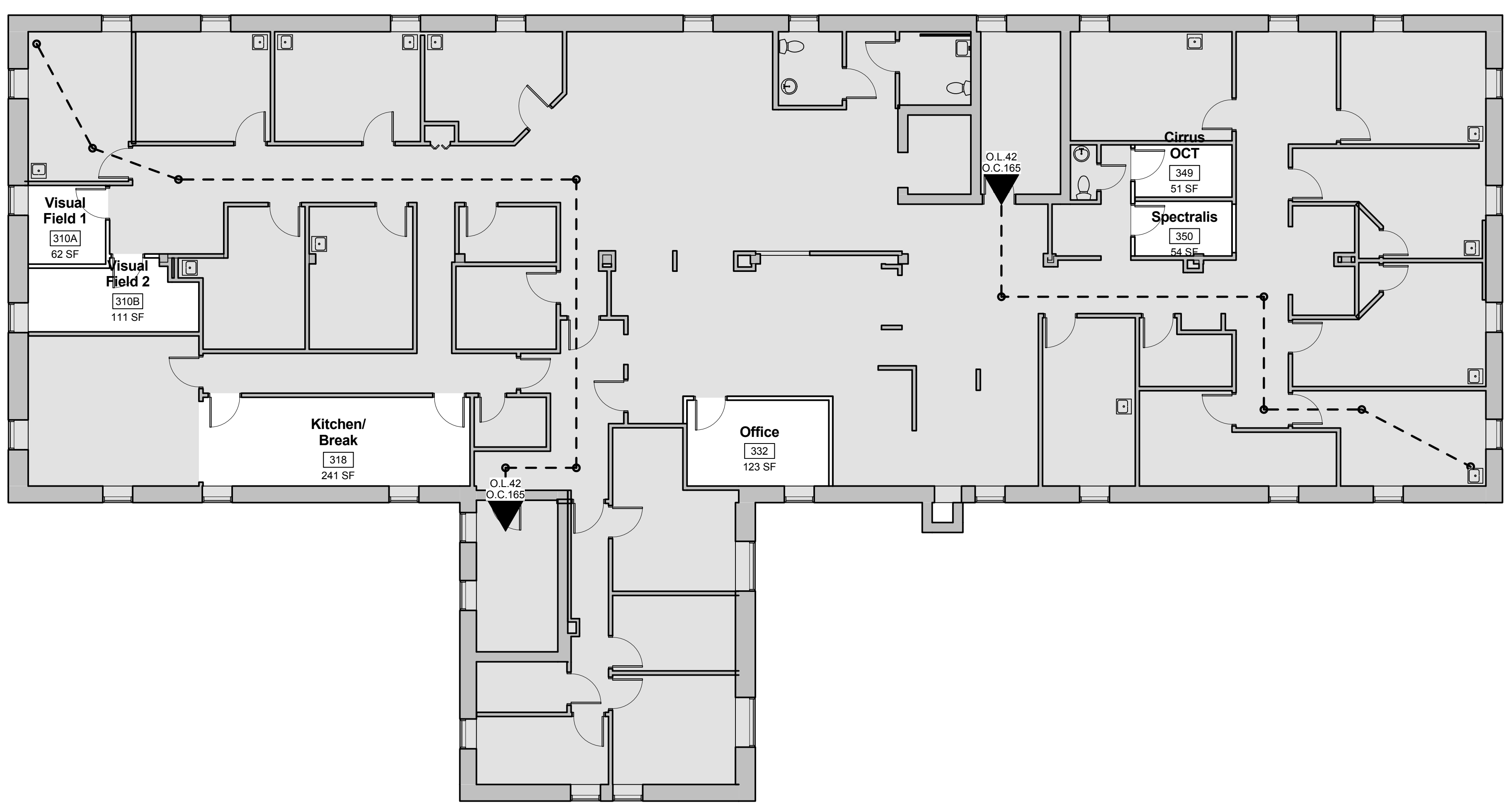
NFPA CHAPTERS
 Chapter 39 Existing Business Occupancy

MEANS OF EGRESS:
 7.3.2.1(1) Exits - Existing to remain
 7.2.1.6.2 Access - controlled egress doors - Doors shall be arranged to unlock in the direction of travel.

EXTINGUISHMENT REQUIREMENTS:
 9.7.4.1 Manual extinguishing equipment - Class A Hazard - Light/low hazard
 Occupancy - Table 6.2.1.1 Distance to fire extinguisher: 75ft

TRAVEL DISTANCE
 39.2.5.2 Dead End Corridors - Limited to 50 ft.
 39.2.5.3.1 Common path of travel - Limited to 100'
 39.2.6.2 Travel distance - Limited to 200 ft.

3 Level 4 - Life Safety Plan
 1/8" = 1'-0"



1 Level 3 - Life Safety Plan
 1/8" = 1'-0"