



HARRIMAN

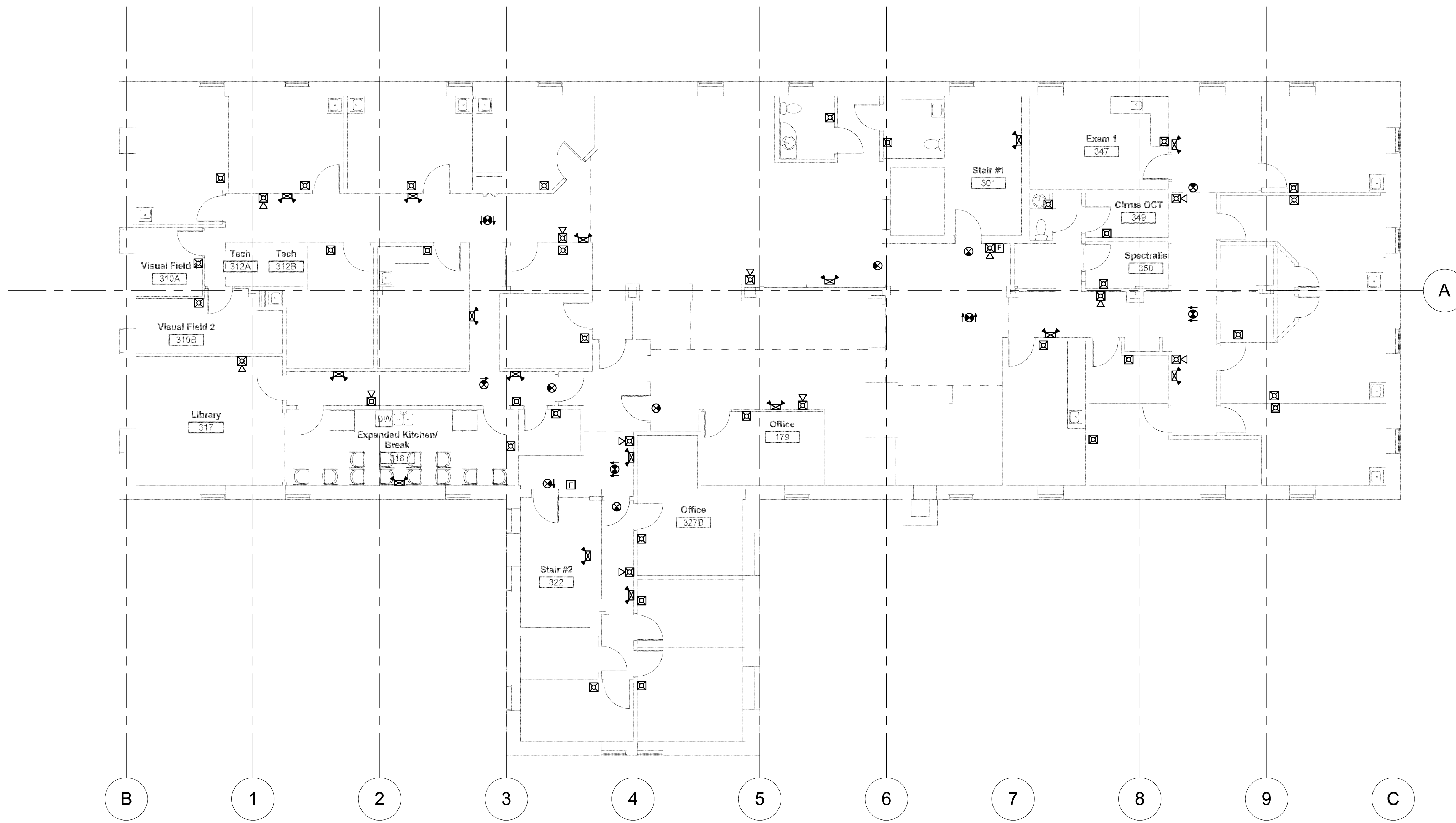
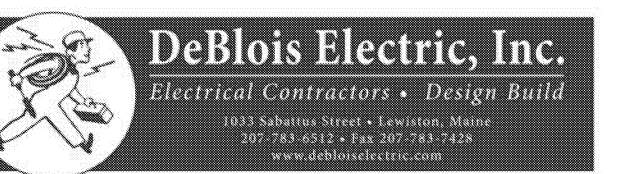
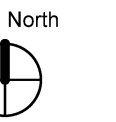
AUBURN PORTLAND PORTSMOUTH BOSTON

LOWELL STREET RENOVATIONS

PORTLAND, MAINE

Harriman Project No. 16712

Key Plan



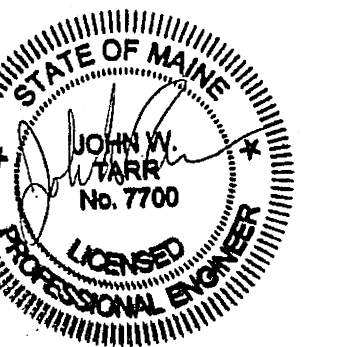
LIFE SAFETY SYSTEM SYMBOL LEGEND

HT. AFF.	SYMBOL	DESCRIPTION
90°		EMERGENCY BATTERY LIGHT
		EMERGENCY BATTERY REMOTE HEADS
		WALL MOUNTED EXIT SIGN WITH ARROWS AS INDICATED/HATCH INDICATES FACE - MOUNT DIRECTLY ABOVE DOOR
		CEILING MOUNTED EXIT SIGN WITH ARROWS AS INDICATED/HATCH INDICATES FACE
90°		WALL MOUNTED FIRE ALARM STROBE LIGHT
90°		WALL MOUNTED FIRE ALARM HORN / STROBE LIGHT
48"		FIRE ALARM MANUAL PULL STATION

ALL DISTANCES ARE TO CENTER OF DEVICE OR EQUIPMENT UNLESS OTHERWISE NOTED. DEVICES INDICATED AT 48" MAY NOT BE INSTALLED WITH ANY OPERABLE PART HIGHER THAN 48". DEVICES MAY BE INSTALLED IN CONCRETE MASONRY UNITS WITH THE TOP OF THE DEVICE AT 48".

1 THIRD FLOOR LIFE SAFETY PLAN
SCALE: 1/8" = 1'-0"

Issues and Revisions	
Date	Description
06-09-17	FIRE MARSHAL REVIEW



PA / PE: JWT
Drawn By: DSH

© 2017
Harriman Associates

THIRD FLOOR LIFE SAFETY PLAN

E10.3LS