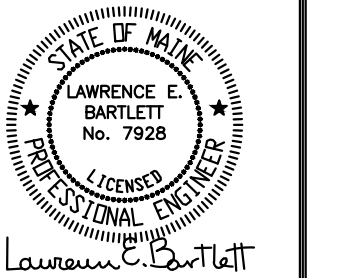
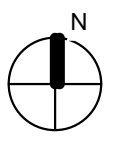
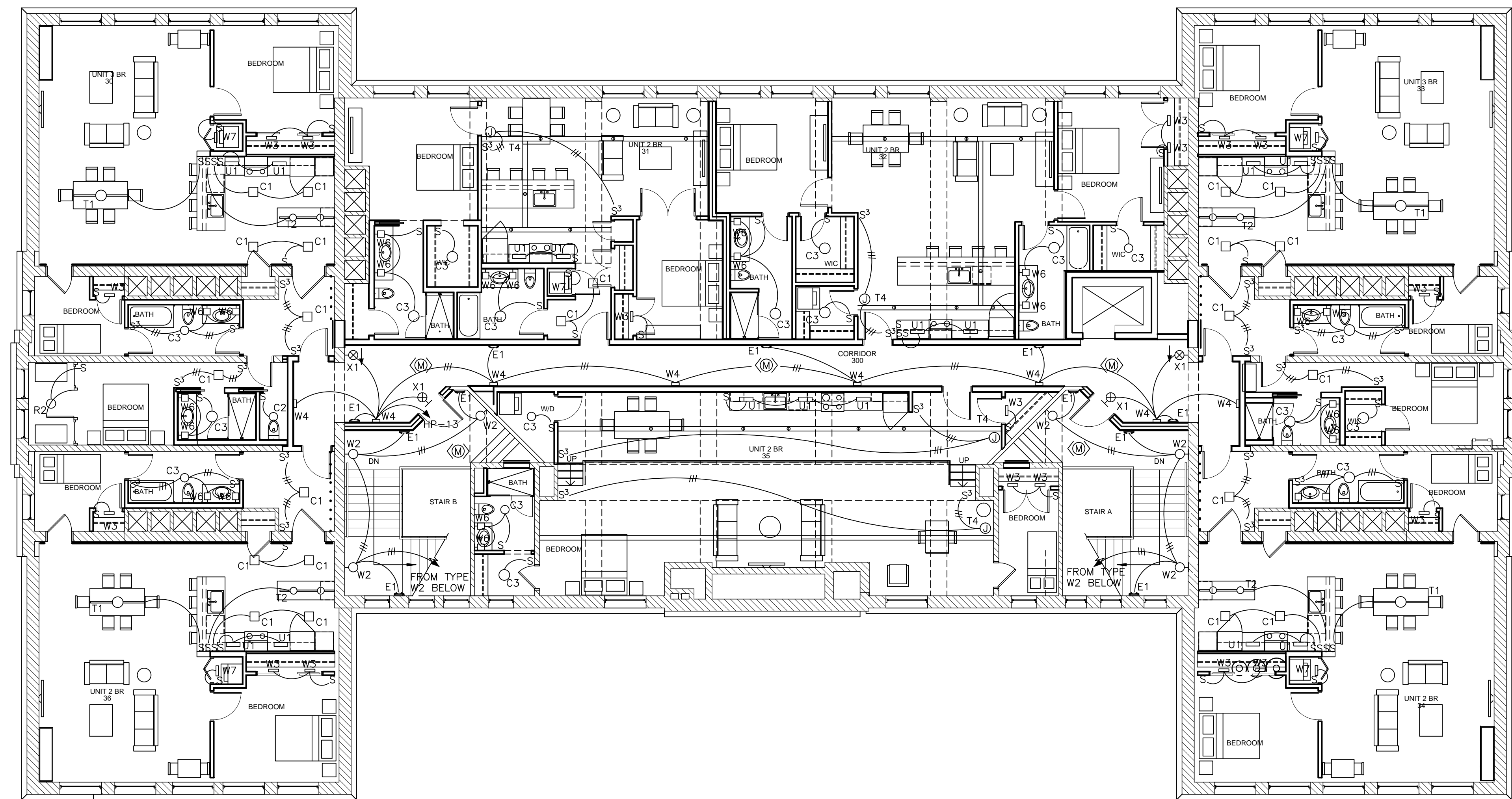
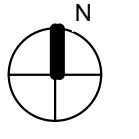


2 | THIRD FLOOR - ELECTRICAL PLAN
 1/8" = 1'-0"
 0 2' 4' 8' 16'



Developers
 Collaborative

Consultant:
Bartlett Design
 48 UNION WHARF STREET, PORTLAND, MAINE 04101
 TEL: (207) 445-3447 FAX: (207) 445-9500

Architect:
NATHAN CLIFFORD
 SCHOOL REDEVELOPMENT
 80 FAIRMOUTH STREET, PORTLAND, MAINE

Project:
NATHAN CLIFFORD
 SCHOOL REDEVELOPMENT
 80 FAIRMOUTH STREET, PORTLAND, MAINE

Revisions:

Date: 18 DEC 2013
 Scale: 1/8" = 1'-0"
THIRD FLOOR
LIGHTING &
ELECTRICAL PLANS

E1.04